



Improving lives together

Specialist Social Care Services in Yorkshire

Supporting People with Learning Disabilities,
Autism and Complex Needs

Welcome

Cygnet was established in 1988. Since then, we have developed a wide range of health and social care services for individuals with mental health needs, autism and learning disabilities within the UK.

Through our values of Integrity, Trust, Empower, Respect and Care, we take pride in the services we offer and the outcomes we enable individuals in our care to achieve.



We provide services in England, Scotland and Wales and our expert and highly dedicated care team of almost **13,000 employees** help more than **8,300 individuals** each year across **150 services** to consistently make a positive difference to their lives.



We maintain a good relationship with our quality regulators and undergo regular inspections, with **81% of our services rated 'Good' or 'Outstanding'**.



Click the buttons to find out more about our Specialist Social Care Services in Yorkshire

Introduction
Our Projects
Our Model of Support - Residential Services
Residential Services
Supported Living Services
Neurological Complex Care
Specialist Day Services
Case Study
Map
How to Make a Referral

Contents

Introduction	03	Supported Living Services	
Our Projects	04	Supported Living in Huddersfield (Ashfield)	26
Our Model of Support - Residential Services	08	Supported Living in Huddersfield (Gledcliffe)	27
Residential Services		Supported Living in Leeds	28
Beacon House, Bradford	10	Neurological Complex Care	
Beckly, Halifax	11	The Daley Care Centre, Sheffield	29
Dene Brook, Rotherham	12	Specialist Day Services	
Dove Valley Mews, Barnsley	13	Sheffield Day Services	30
Gledholt, Huddersfield	14	Case Study	31
Hawkstone, Keighley	15	Map	32
Kirkside House, Leeds	16	How to Make a Referral	33
Kirkside Lodge, Leeds	17		
Langdale House, Huddersfield	18		
Longfield House, Bradford	19		
Norcott House, Liversedge	20		
Norcott Lodge, Liversedge	21		
Outwood, Horsforth	22		
Oxley Woodhouse, Huddersfield	23		
The Fields, Sheffield	24		
Thornfield House, Bradford	25		



Introduction

Our priority is to ensure that people with learning disabilities enjoy the same right to a happy and fulfilled life as others. We ensure that people in our care feel safe in their environment, are understood and are able to communicate to the best of their ability. Most importantly, with the right support and help, we empower each individual in our care to successfully progress to a community-based service that is suitable for their needs.

Our services in Yorkshire have considerable experience and expertise in supporting individuals with a learning disability to develop independent skills and to live an active and happy life.

The services we offer in Yorkshire are Residential and Supported Living Services.

The people we support:

- > Adults from the age of 17/18+ years
- > Individuals with a primary diagnosis of learning disability accompanied with behaviours that challenge including mental illness or a forensic background
- > Individuals with a secondary diagnosis of autism, personality disorder or dementia
- > May have communication challenges
- > May have associated complex needs



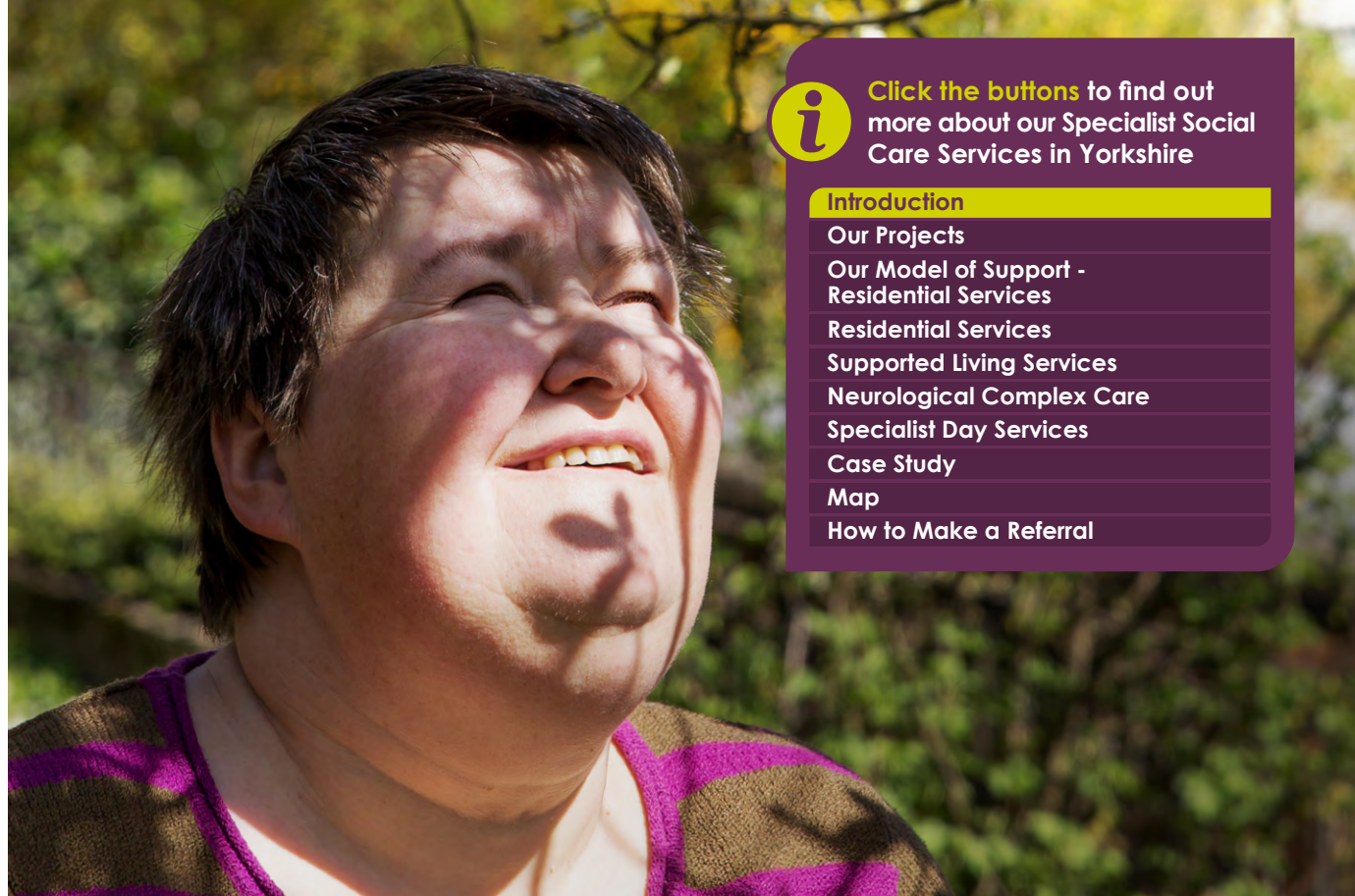
17 + / 18+
years



Mixed
gender



Mental Health Act
Status: Informal



Click the buttons to find out more about our Specialist Social Care Services in Yorkshire

Introduction

[Our Projects](#)

[Our Model of Support - Residential Services](#)

[Residential Services](#)

[Supported Living Services](#)

[Neurological Complex Care](#)

[Specialist Day Services](#)

[Case Study](#)

[Map](#)

[How to Make a Referral](#)



Our Projects

The people we support across Yorkshire have access to three fantastic community projects, which have been running for over 12 years: the bakery project, the textiles project and the gardening project. Each project aims to support individuals to build their portfolio of skills with a person-centred approach and provides meaningful activities with tangible outputs.

There is a real sense of community and co-production across all of the projects and they often work together to arrange parties and events for other local individuals. The bakery, gardening and textiles projects all pay wages to the people we support that attend, giving individuals further independence and a sense of responsibility.

In addition to the core skills individuals will learn and build upon, the projects are also a place for the people we support to unwind and socialise with individuals from different homes. This in turn leads to individuals gaining confidence to progress in their day-to-day lives. Please continue to read more about our projects on [pages 5-8](#).



Click the buttons to find out more about our Specialist Social Care Services in Yorkshire

- Introduction
- Our Projects**
- Our Model of Support - Residential Services
- Residential Services
- Supported Living Services
- Neurological Complex Care
- Specialist Day Services
- Case Study
- Map
- How to Make a Referral



The Bakery Project

Accessible Monday to Friday, the bakery project gives local people we support an insight into working in the community. Those who attend are able to see the process of baking from start to finish, including budgeting and purchasing ingredients and of course, enjoying the bakes at the end.

The project often caters for the individual's social events, taking orders for bespoke birthday cakes which the people we support take great pride in making and taking back to their service. The project allows individuals to make decisions about things they'd like to learn or bakes they'd like to try.

Minimising waste and recycling is encouraged at the project, and any left-over products are donated to a local food bank charity for those in need.



"I like making cookies..."

A person we support, Oxley Woodhouse

"Bakery made me a train cake for my birthday!..."

A person we support, Hawkstone

"I love to bake lots of delicious goodies and make loads of new friends..."

A person we support, Yorkshire Supported Living



Click the buttons to find out more about our Specialist Social Care Services in Yorkshire

Introduction

Our Projects

Our Model of Support - Residential Services

Residential Services

Supported Living Services

Neurological Complex Care

Specialist Day Services

Case Study

Map

How to Make a Referral



Scan the QR Code to see a video on The Bakery Project



The Textiles Project

The textiles project produces a variety of artistic pieces, including stuffed animals, aprons, peg bags, softballs and pom-poms. The products created are sold to staff and family members, and they even make Christmas decorations for all of the residential services in West Yorkshire.

The team work hard to empower everyone who walks through the door to achieve what they want to. They are keen to encourage individuals to reach their full potential and learn new skills, but equally happy to support individuals to do the things they enjoy.

It is a friendly environment where individuals are encouraged to do their best.



Click the buttons to find out more about our Specialist Social Care Services in Yorkshire

Introduction

Our Projects

Our Model of Support - Residential Services

Residential Services

Supported Living Services

Neurological Complex Care

Specialist Day Services

Case Study

Map

How to Make a Referral



Scan the QR Code to see a video on The Textiles Project



The Gardening Project

The gardening project aims to encourage and promote the importance of working as a team whilst bringing out the best in any individual to nurture growth, both personally, and in what they plant. The gardens are set in a quiet, peaceful and private area, surrounded by trees, birds, and lots of fresh air. The project runs Monday to Friday from 9.30am – 2.00pm.

A variety of fruit and vegetables are grown, including; apples, blackberries, carrots, courgettes, grapes, onions, plums, potatoes, strawberries, sweetcorn and tomatoes. Everything that is grown is used by the people we support for their own cooking needs. There are flower beds, vegetable patches, a polytunnel and individual gardening plots, all planted and maintained by the individuals alongside the head gardener.

In the winter, when the weather gets chilly, individuals that attend are offered the opportunity to learn some woodwork skills, making planters and bird boxes. Individuals who attend the gardening project also learn some basic trade skills.



Click the buttons to find out more about our Specialist Social Care Services in Yorkshire

Introduction

Our Projects

Our Model of Support - Residential Services

Residential Services

Supported Living Services

Neurological Complex Care

Specialist Day Services

Case Study

Map

How to Make a Referral



Scan the QR Code to see a video on The Gardening Project



Our Model of Support - Residential Services

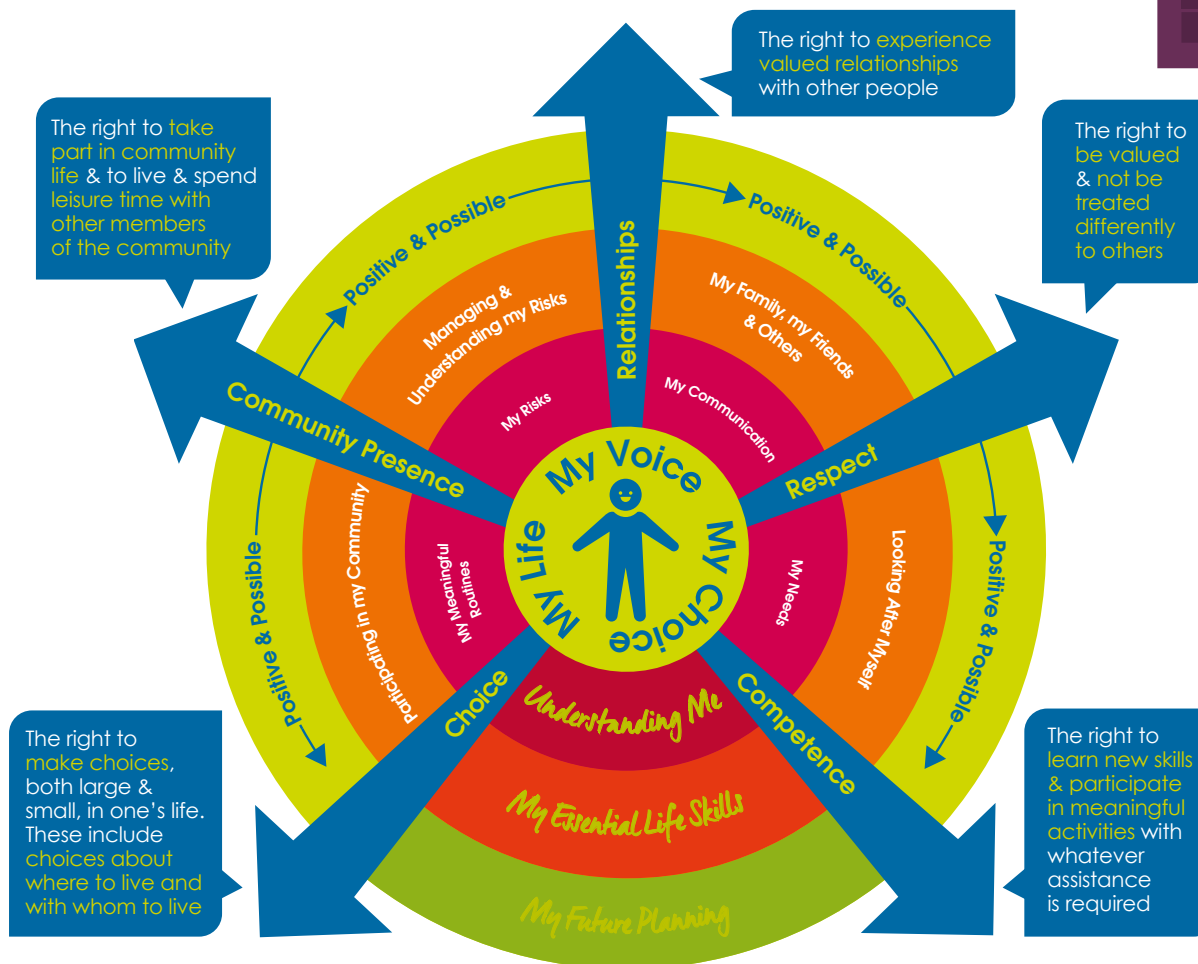
At Cygnet Social Care, we believe that each individual with a **learning disability** has the right to a happy and fulfilled life regardless of their level of support.

To help guide us and make sure we are all working together to achieve this, we have formed **Our Model of Support for our Residential Services**. A guide that shows what we do as an organisation to support individuals with **learning disabilities**.



Click the buttons to find out more about our Specialist Social Care Services in Yorkshire

- Introduction
- Our Projects
- Our Model of Support - Residential Services**
- Residential Services
- Supported Living Services
- Neurological Complex Care
- Specialist Day Services
- Case Study
- Map
- How to Make a Referral



Adapted from: O'Brien, C. L., & O'Brien, J. (2002). The origins of person-centered planning: A community of practice perspective.





Beacon House, Bradford

281 Beacon Road, Wibsey, Bradford, West Yorkshire, Yorkshire & Humber BD6 3DQ

Residential Services

Specialism: Learning Disabilities and Autism



18+ years



Mixed gender



16 placements in 6 living areas



[Click here to visit our website](#)

Beacon House is a specialist residential service in West Yorkshire. We support individuals with learning disabilities, autism, complex needs and behaviours that may challenge.

At Beacon House, we encourage and enable the people we support to lead a full and happy life. We work with each person to find out their strengths, abilities and preferences so that the care provided can be as person-centred to each individual as possible.

The service is in a great location in Wibsey, Bradford. Halifax is close by and also on the doorstep of some beautiful countryside walks. The individuals we support are encouraged to be involved in the local community and also supported to visit the city centre, which is a 15 minute bus ride away; there is no shortage of community integration.

Beacon House is split into six different living areas across four floors, enabling individuals to live in smaller groups. Each living area has its own lounge, dining room, kitchen, bathrooms and en-suite facilities. Externally, we have a large south-facing garden with space for playing games and also a number of picnic tables allowing for summer entertaining.

The people we support may come to Beacon House for many reasons. They may be moving through their care pathway from a hospital setting or may require extra support during a difficult period in their life, or they could be on a pathway to a place of their own.

In conjunction with the other local Cygnet residential services, we have some fantastic projects that the people we support can attend regularly, including local bakery, gardening and on-site textile projects. These projects introduce vocational and learning activities designed to give individuals the opportunity to learn valuable skills and develop confidence.



Our community links:

- > Cafés, restaurants and gastropubs
- > Beautiful parks and countryside on the doorstep
- > Local colleges & libraries
- > Great public transport links
- > Leisure and sporting facilities nearby
- > Barbers and hairdressers
- > Cinema, bowling and other recreational facilities
- > Museums

Close links with Waddiloves (Bradford and Airedale Learning Disabilities health support team)



Specialist training delivered to staff tailored to the needs of the individuals, e.g. dementia training



Accessible information available to all



Good transport links to Leeds, Huddersfield, and Halifax

Promote family involvement as much as possible



Click the buttons to find out more about our Specialist Social Care Services in Yorkshire

[Introduction](#)

[Our Projects](#)

[Our Model of Support - Residential Services](#)

Residential Services

[Beacon House, Bradford](#)

[Beckly, Halifax](#)

[Dene Brook, Rotherham](#)

[Dove Valley Mews, Barnsley](#)

[Gledholt, Huddersfield](#)

[Hawkstone, Keighley](#)

[Kirkside House, Leeds](#)

[Kirkside Lodge, Leeds](#)

[Langdale House, Huddersfield](#)

[Longfield House, Bradford](#)

[Norcott House, Liversedge](#)

[Norcott Lodge, Liversedge](#)

[Outwood, Horsforth](#)

[Oxley Woodhouse, Huddersfield](#)

[The Fields, Sheffield](#)

[Thornfield House, Bradford](#)

[Supported Living Services](#)

[Neurological Complex Care](#)

[Specialist Day Services](#)

[Case Study](#)

[Map](#)

[How to Make a Referral](#)





Beckly, West Yorkshire

56 Cooper Lane, Shelf, Halifax, West Yorkshire, Yorkshire & Humber HX3 7RG

Residential Services

Specialism: Learning Disabilities and Autism



18+ years



Mixed gender



12 placements in 3 living areas



Click here to visit our website

Beckly is a specialist residential service in Shelf, Halifax - West Yorkshire, supporting people with learning disabilities, complex needs and behaviours that may challenge.

We encourage and enable the people we support to lead a full and happy life. We work with people to ensure they have more choice and control in their lives. We find out their strengths, abilities and preferences so that the care provided can be as person-centred and meaningful to each individual as possible.

The service is split into Beckly House and Beckly Lodge.

Beckly House has 8 en-suite bedrooms, three of which are on the ground floor and are suitable for people with mobility issues. In addition, there are communal living areas including a lounge, dining room, a conservatory and activity space.

Beckly Lodge is made up of two, 2-bed living areas, each with its own en-suite toilet. One of the living spaces has a shared lounge space for two individuals in a large open plan area, whilst the second two bed living area has two separate lounges for the people who live there. Externally, there is a large garden with plenty of space for outdoor activities, sports, barbecues and parties.

Beckly is located in the village of Shelf, which is in-between the cities of Halifax and Bradford. In a great location, steeped with history, the service is close to many community facilities, fantastic nature walks and good transport links. The individuals are encouraged to be involved in the local community as much or as little as they wish to be.

In conjunction with the other local Cygnet residential services, we have some fantastic projects that people we support can attend regularly, including bakery, textiles and horticultural work. These projects introduce vocational and learning activities designed to give individuals the opportunity to learn valuable skills and develop confidence in a safe and familiar environment.

Themed days organised regularly, including Pride, Easter, National Tea Party



Excellent location, close to local towns and beautiful countryside



Successfully discharge individuals to their own supported accommodation



Supporting individuals to enhance their social skills



Strong links with local community learning disability team (CLDT)



Our community links:

- > Cafés and restaurants
- > Local colleges & libraries
- > Beauty salons
- > Theatres and cinemas
- > Bowling and other leisure facilities
- > Beautiful parks and countryside on the doorstep
- > Great public transport links



Click the buttons to find out more about our Specialist Social Care Services in Yorkshire

Introduction

Our Projects

Our Model of Support - Residential Services

Residential Services

Beacon House, Bradford

Beckly, Halifax

Dene Brook, Rotherham

Dove Valley Mews, Barnsley

Gledholt, Huddersfield

Hawkstone, Keighley

Kirkside House, Leeds

Kirkside Lodge, Leeds

Langdale House, Huddersfield

Longfield House, Bradford

Norcott House, Liversedge

Norcott Lodge, Liversedge

Outwood, Horsforth

Oxley Woodhouse, Huddersfield

The Fields, Sheffield

Thornfield House, Bradford

Supported Living Services

Neurological Complex Care

Specialist Day Services

Case Study

Map

How to Make a Referral





Dene Brook, Rotherham

Dalton Lane, Dalton Parva, Rotherham, South Yorkshire, Yorkshire & Humber S65 3QQ

Residential Services

Specialism: Learning Disabilities and Autism



18+ years



Mixed gender



14 placements in 7 living areas



Click here to visit our website

Dene Brook is a specialist residential service in Rotherham, South Yorkshire, supporting people with learning disabilities, complex needs, autism and behaviours that may challenge.

We encourage and enable the people we support to lead a full and happy life. We work with them to ensure they have more choice and control in their lives. We find out their strengths, abilities and preferences so that the care provided can be person-centred and meaningful to each individual.

Dene Brook is split into eight apartments allowing individuals to live either on their own or in small groups. We have two 3-bed placements, two 2-bed placements and four 1-bed placements, one of which is located in the grounds of Dene Brook and has its own garden and front door. Each of the apartments have a lounge, kitchen and dining facilities and the shared living areas all have en-suite toilets with a shared bathroom. In addition, we also have an activity room, laundry room and a sensory room for all individuals to access. Externally, we have a patio area and an extensive secure grassed garden with plenty of space for playing games / sports and a seating area allowing for summer entertaining.

Dene Brook is located in Dalton Parva, a lovely village in the suburbs of Rotherham. At the end of the road, there are buses that take you directly to either Rotherham or Sheffield where there is an abundance of community facilities that you would expect from a major town or city. In the local village, there are shops, pubs, cafés and beautiful countryside.

The people we support are encouraged to be involved in the local community as much as they wish to be.

In conjunction with the other local Cygnet residential services, we have some great projects that individuals can attend regularly, including bakery, gardening, and textiles projects.

Our community links:

- Great public transport links to major local towns and cities
- Countryside walks
- Retail parks and local shops
- Close links with the local MDT team
- Regular on-site health checks
- Cinemas and bowling alleys
- Restaurants, pubs and cafés
- Local restaurants, swimming pool, cinema, social clubs



Community activities based on person-centred interests, e.g. theme parks, visiting sensory rooms



Regular themed days and parties



Meetings take place monthly, with pictorial easy read minutes displayed in the service



Person-centred keyworker allocation - staff and individual interests are matched



Supporting individuals on holidays



Click the buttons to find out more about our Specialist Social Care Services in Yorkshire

Introduction

Our Projects

Our Model of Support - Residential Services

Residential Services

Beacon House, Bradford

Beckly, Halifax

Dene Brook, Rotherham

Dove Valley Mews, Barnsley

Gledholt, Huddersfield

Hawkstone, Keighley

Kirkside House, Leeds

Kirkside Lodge, Leeds

Langdale House, Huddersfield

Longfield House, Bradford

Norcott House, Liversedge

Norcott Lodge, Liversedge

Outwood, Horsforth

Oxley Woodhouse, Huddersfield

The Fields, Sheffield

Thornfield House, Bradford

Supported Living Services

Neurological Complex Care

Specialist Day Services

Case Study

Map

How to Make a Referral





Dove Valley Mews, Barnsley

75 Park Street, Wombwell, Barnsley, South Yorkshire, Yorkshire & Humber S73 0HL

Residential Services

Specialism: Learning Disabilities and Autism



18+ years



Mixed gender



6 placements in 3 living areas



Click here to visit our website

Dove Valley Mews is a residential service providing outcome focused care for adults with a learning disability and associated complex needs who may have behaviours that challenge.

We encourage and enable the people we support to lead a full and happy life. We work with them to ensure they have more choice and control in their lives. We find out their strengths, abilities and preferences so that the care provided can be as person-centred and meaningful to each individual as possible.

Dove Valley Mews offers three living spaces, a three, a two and one bed apartment, totalling six living areas. These are configured to meet the needs of the people we support, which includes communal living areas and an enclosed outdoor garden.

Promoting the independence of the people we support is very important at Dove Valley Mews, we ensure that we have a robust transition plan in place so that we can focus on the needs of that individual. The team ensure that the support provided is person-centred to each individual. Everything we do is catered around their needs, whether that be going out on an excursion, visiting their families or perhaps even making their own cup of tea.

Our community links:

- > Bowling
- > Cinemas
- > Shopping
- > Barnsley Town Centre
- > Parks
- > Barnsley Metrodome Water Park
- > The Botanical Gardens
- > Leisure Centres



Supporting individuals to devise their own activity timetable



Focused on reducing restrictive practice



Regular parties and family visits to celebrate special occasions and birthdays



"I like to sing and dance with my support staff, I also like it when they take me swimming and I splash around."
A person in our care



Click the buttons to find out more about our Specialist Social Care Services in Yorkshire

Introduction

Our Projects

Our Model of Support - Residential Services

Residential Services

Beacon House, Bradford

Beckly, Halifax

Dene Brook, Rotherham

Dove Valley Mews, Barnsley

Gledholt, Huddersfield

Hawkstone, Keighley

Kirkside House, Leeds

Kirkside Lodge, Leeds

Langdale House, Huddersfield

Longfield House, Bradford

Norcott House, Liversedge

Norcott Lodge, Liversedge

Outwood, Horsforth

Oxley Woodhouse, Huddersfield

The Fields, Sheffield

Thornfield House, Bradford

Supported Living Services

Neurological Complex Care

Specialist Day Services

Case Study

Map

How to Make a Referral





Gledholt, Huddersfield

32 Greenhead Road, Gledholt, Huddersfield, West Yorkshire HD1 4EZ

Residential Services

Specialism: Learning Disabilities and Autism



18+ years



Mixed gender



9 placements in 2 living areas



Click here to visit our website

Gledholt is an enhanced community residential service providing outcome focused support for adults with learning disabilities, who may have behaviours that challenge and associated complex needs.

Gledholt is operationally a nurse-led service with both the service manager and head of care being qualified nurses. We have an in-house multi-disciplinary team (MDT) who support the individuals in our care throughout their journey with us. The team consists of a consultant psychologist, psychology assistant, occupational therapist, occupational therapy assistant, activity co-ordinators, nurses and speech and language therapist. We are able to meet the changing needs of the people we support as they progress through their care pathway, while ensuring their safety is maintained and their independence supported.

We have a unique care plan pathway called the Visual Discharge Plan (VDP). This approach involves a collaborative process between the individual, their families, the MDT and staff team. It ensures the person is at the heart of their care and takes into account what's important to them, whilst balancing this with the clinical need. This puts the people we support at the heart of their care and also ensures that discharge planning commences at the point of admission.

Gledholt is divided into two living areas, the main house and the coach house. The main house, which is split across three floors, offers seven en-suite bedrooms, communal lounges and a kitchen on each floor to enable individuals to shop for and prepare their own meals. The coach house is a two bedroom unit giving the individuals we support the option to spend time in their own space or in the main house. Externally, there are beautiful gardens to the front and rear of the building with raised flower beds, outdoor seating and plenty of space for sports, games and parties.

The service is located in a bustling residential area of Huddersfield, within walking distance to an abundance of community facilities. Individuals we support are encouraged to be involved in the local community as much or as little as they wish to be. We have great links with external agencies, including the police, the mental health enhancement team, local hospitals and many more to ensure that people we support are safe and well supported in the community.

Our community links:

- > Cinemas
- > Local parks
- > Community groups
- > Colleges
- > Shops, cafés and restaurants
- > Sports clubs
- > Great public transport links

Individuals are supported to attend local colleges for English and Maths skills



Specialist training delivered to staff tailored to the needs of the individuals



Collaborative care planning with external agencies to enhance the experience of accessing the community

People we support are encouraged to cook and prepare their own lunches independently or with staff support



Click the buttons to find out more about our Specialist Social Care Services in Yorkshire

Introduction

Our Projects

Our Model of Support - Residential Services

Residential Services

Beacon House, Bradford

Beckly, Halifax

Dene Brook, Rotherham

Dove Valley Mews, Barnsley

Gledholt, Huddersfield

Hawkstone, Keighley

Kirkside House, Leeds

Kirkside Lodge, Leeds

Langdale House, Huddersfield

Longfield House, Bradford

Norcott House, Liversedge

Norcott Lodge, Liversedge

Outwood, Horsforth

Oxley Woodhouse, Huddersfield

The Fields, Sheffield

Thornfield House, Bradford

Supported Living Services

Neurological Complex Care

Specialist Day Services

Case Study

Map

How to Make a Referral





Hawkstone, Keighley

Shann Lane, Off Spring Garden Lane, Keighley, West Yorkshire, Yorkshire & Humber BD20 6NA

Residential Services

Specialism: Learning Disabilities and Autism



18+ years



Mixed gender



10 placements in 2 living areas



Click here to visit our website

Hawkstone is a specialist residential service in Bradford, West Yorkshire, supporting people with learning disabilities, complex needs and behaviours that may challenge.

We encourage and enable the people we support to lead a full and happy life. We work with them to ensure they have more choice and control in their lives. We find out their strengths, abilities and preferences so that the care provided can be as person-centred and meaningful to each individual as possible.

Hawkstone is split into two separate living areas, **Hawkstone House** and **Hawkstone Cottage**. Hawkstone House is set in a beautiful 19th century building that was originally the Duke of Devonshire's hunting lodge. The building is steeped in history and has a great deal of character, including towers and a grand, ornate entrance foyer.

Hawkstone House has six placements and numerous communal living areas including a lounge, conservatory, dining room, bathroom, kitchen and an activity room. Externally, there is a large garden with a trampoline and a swing, as well as a more secluded quiet part of the garden towards the rear of the grounds.

Hawkstone Cottage is modern and very homely with four en-suite bedrooms as well as a lounge, dining room, kitchen and a lovely seating area in front of the cottage surrounded by beautiful flower beds, making it a perfect location for afternoon tea.

Hawkstone is located in Keighley, which has an abundance of community facilities, fantastic nature walks and good transport links. The individuals are encouraged to be involved in the local community as much or as little as they wish to be.

In conjunction with the other local Cygnet residential services, we have some great projects that individuals can attend regularly including bakery, textiles and gardening work. These projects introduce vocational and learning activities designed to give the people we support the opportunity to learn valuable skills and develop confidence.

Our community links:

- Cliffe Castle Park and Museum
- Tarn Lake
- Skipton Castle
- Bolton Abbey
- East Riddlesden Hall Trust
- Bronte museum in Howarth
- Vintage carriages and Railway museum
- Keighley Bus Museum
- Keighley & Worth Valley Steam Railway
- Keighley Civic Centre & Police museum
- Local Leisure Centre
- Library
- Local shops all within walking distance

Monthly day trips to Blackpool, Scarborough, Bridlington, Knowles Safari Park, The Deep in Hull, Skipton, and Shipley

Monthly meetings with the people we support with pictorial easy read minutes displayed in the service

Achieved the Dignity in Care award

Rated 'Good' by the CQC

Monthly theme nights, movie nights, karaoke nights and games night at the service

Supporting individuals on holidays in the UK and abroad



Click the buttons to find out more about our Specialist Social Care Services in Yorkshire

- Introduction
- Our Projects
- Our Model of Support - Residential Services
- Residential Services**
- Beacon House, Bradford
- Beckly, Halifax
- Dene Brook, Rotherham
- Dove Valley Mews, Barnsley
- Gledholt, Huddersfield
- Hawkstone, Keighley
- Kirkside House, Leeds
- Kirkside Lodge, Leeds
- Langdale House, Huddersfield
- Longfield House, Bradford
- Norcott House, Liversedge
- Norcott Lodge, Liversedge
- Outwood, Horsforth
- Oxley Woodhouse, Huddersfield
- The Fields, Sheffield
- Thornfield House, Bradford
- Supported Living Services
- Neurological Complex Care
- Specialist Day Services
- Case Study
- Map
- How to Make a Referral





Kirkside House, Leeds

1 Spen Lane, Kirkstall, Leeds, West Yorkshire, Yorkshire & Humber LS5 3EJ

Residential Services

Specialism: Learning Disabilities and Autism



18+ years



Mixed gender



7 placements in 3 living areas



Click here to visit our website

Located in a historical area in Leeds, Kirkside House is a specialist residential service providing outcome focused care for adults with learning disabilities and associated complex needs who may have behaviours that challenge.

Person-centred planning is at the heart of everything we do and we are able to meet the changing needs of the people we support as they progress through their care pathway, while ensuring their safety is maintained and their independence supported.

Kirkside House contains three separate living areas to support individuals at different stages in their care pathway. The first is a four-room area, designed for individuals to live in small groups with a shared lounge, dining room, and kitchen. This home also features a two-room ground floor living area, which provides two individuals with their own private space. This arrangement is particularly suitable for individuals who may have physical or mobility issues. Finally, we offer a one-room bespoke living area for an individual who requires 2:1 support; this living space comes complete with its own private garden.

Externally, there is a large garden which is shared with Kirkside Lodge (also a residential service located in the same grounds). There is plenty of space in the garden for people to participate in the gardening project, where they grow their own vegetables, create hanging baskets, or enjoy the sensory garden and outside space.

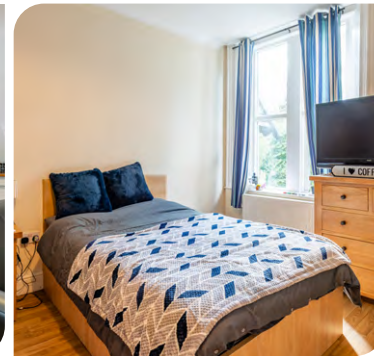
We also host the bakery project, these projects and a textile project are run in conjunction with the other local Cygnet residential services. These projects introduce vocational and learning activities designed to give the people we support the opportunity to learn valuable skills and develop confidence in a safe and familiar environment.

We ensure we involve family or advocates in an individual's care. We have high staffing levels to ensure that we are able to meet the changing needs of the people we support as they progress through their care pathway.

The service is in walking distance of community facilities including shopping centres, cafés and leisure centres. It is also only a minute walk from the 800 year old Kirkstall Abbey, where individuals can visit to enjoy the surroundings, learn about the historical ruins or visit the on-site café.

Our community links:

- Cinemas
- Local parks
- Community groups
- Shops, cafés and restaurants
- Colleges
- Sports clubs
- 20 minutes to Leeds City Centre
- Excellent transport links and local amenities



Monthly themed activity days



Textiles project

- giving individuals the opportunity to learn to sew and create new things each week

Community meetings
Individuals give thoughts and feedback on the service



"Staff make me feel safe."
- A person we support

Good relationship with local Community Learning Disability Team (CLDT)



Easy read and other accessible information is available



Click the buttons to find out more about our Specialist Social Care Services in Yorkshire

Introduction

Our Projects

Our Model of Support - Residential Services

Residential Services

Beacon House, Bradford

Beckly, Halifax

Dene Brook, Rotherham

Dove Valley Mews, Barnsley

Gledholt, Huddersfield

Hawkstone, Keighley

Kirkside House, Leeds

Kirkside Lodge, Leeds

Langdale House, Huddersfield

Longfield House, Bradford

Norcott House, Liversedge

Norcott Lodge, Liversedge

Outwood, Horsforth

Oxley Woodhouse, Huddersfield

The Fields, Sheffield

Thornfield House, Bradford

Supported Living Services

Neurological Complex Care

Specialist Day Services

Case Study

Map

How to Make a Referral





Kirkside Lodge, Leeds

1 Spen Lane, Kirkstall, Leeds, West Yorkshire, Yorkshire & Humber LS5 3EJ

Residential Services

Specialism: Learning Disabilities and Autism



18+ years



Mixed gender



8 placements in 4 living areas



Click here to visit our website

Located in a historical area in Leeds, Kirkside Lodge is a specialist residential service providing outcome focused care for adults with learning disabilities and associated complex needs who may have behaviours that challenge.

Person-centred planning is at the heart of everything we do and we are able to meet the changing needs of individuals we support as they progress through their care pathway, while ensuring their safety is maintained and their independence supported.

Kirkside Lodge features four distinct living areas: one with three bedrooms, two with two bedrooms, and a single-bedroom space. Each of these accommodations boasts its own living space, complete with a lounge, dining room, kitchen, and en-suite facilities, enabling individuals to live as independently as possible.

Externally, there is a large garden which is shared with Kirkside House (also a residential service located in the same grounds). There is plenty of space in the garden for individuals to participate in the horticultural project where they grow their own vegetables, create hanging baskets, enjoy the sensory garden or even just sit and enjoy the outside space.

At Kirkside House, we are also proud to host our bakery project. This initiative, alongside a textile project and other vocational programs, is run collaboratively with our other local Cygnet residential services.

These projects introduce practical learning activities specifically designed to empower the people in our care, offering them the chance to develop valuable skills and build confidence within a safe and familiar setting.

We ensure we involve family or advocates in an individual's care. We have high staffing levels at Kirkside Lodge, this ensures that we are able to meet the changing needs of each individual as they progress through their care pathway.

The service is located in a historical residential area of Leeds, in walking distance to an abundance of community facilities including shopping centres, cafes and leisure centres. It is also only a short walk from the 800 year old Kirkstall Abbey, where the people we support can visit to enjoy the surroundings, learn about the historical ruins or visit the on-site café. All individuals are encouraged to be involved in the local community as much or as little as they wish to be.

Our community links:

- > Cinemas
- > Local parks
- > Community groups
- > Colleges
- > Shops, cafés and restaurants
- > Sports clubs
- > 20 minutes to Leeds City Centre
- > Excellent transport links and local amenities



Good relationship with local CLDT



Supporting individuals to enhance their social skills


Gardening projects
– hosted in the large garden where individuals learn how to grow produce and take care of animals



Monthly themed activity days

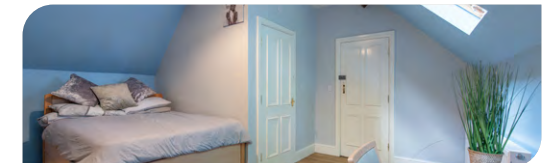


Focused on reducing restrictive practice




Click the buttons to find out more about our Specialist Social Care Services in Yorkshire

- Introduction
- Our Projects
- Our Model of Support - Residential Services
- Residential Services**
- Beacon House, Bradford
- Beckly, Halifax
- Dene Brook, Rotherham
- Dove Valley Mews, Barnsley
- Gledholt, Huddersfield
- Hawkstone, Keighley
- Kirkside House, Leeds
- Kirkside Lodge, Leeds
- Langdale House, Huddersfield
- Longfield House, Bradford
- Norcott House, Liversedge
- Norcott Lodge, Liversedge
- Outwood, Horsforth
- Oxley Woodhouse, Huddersfield
- The Fields, Sheffield
- Thornfield House, Bradford
- Supported Living Services
- Neurological Complex Care
- Specialist Day Services
- Case Study
- Map
- How to Make a Referral





Langdale House, Huddersfield

56 Gledholt Road, Huddersfield, West Yorkshire, Yorkshire & Humber HD1 4HR

Residential Services

Specialism: Learning Disabilities and Autism



18+ years



Mixed gender



10 placements



Click here to visit our website

Langdale House is a specialist residential service supporting people with learning disabilities, complex needs and behaviours that may challenge in Huddersfield, West Yorkshire.

The main house accommodates up to eight people and offers spacious communal areas, a dedicated activity room and an enclosed outdoor garden within a homely environment. In the grounds, we have two new single occupancy flats in the Coach House. Each flat boasts a double bedroom with fitted furniture, a bathroom / wet room and open plan living and kitchen space.

The service is in a central location opposite a popular community park. Just a 10 minute walk into Huddersfield town centre and with a bus stop outside the house has transport links to all major cities; there is no shortage of community integration.

We believe that it is essential for the people we support to have purpose in their day-to-day life and to learn new skills. We have established different work projects to introduce vocational and learning activities, where the people we support can learn valuable skills and develop confidence.

Ongoing assessments enable us to meet the changing needs of the people we support as they progress through their care pathway while ensuring their safety is maintained and their independence supported. Regular review meetings involving the individuals, their family and professionals are held to review outcomes, set new goals and re-assess support levels.

People come to Langdale House for different reasons; they may require more support than can be provided in a supported living setting or they may be moving along their care pathway from a hospital placement. Whatever the reason, the team can offer specialist input based on individual need to deliver flexible and effective support.

Our community links:

- > Local cafés, restaurants and pubs
- > Local colleges and libraries
- > Huddersfield town centre – shops, cinema, museums
- > Huddersfield train station with good links to Leeds and Bradford
- > Greenhead Park offers a café, tennis courts, a pond and garden area and hosts regular festivals



Person-centred meal planning, including shopping and cooking

10 mins from train station with rail links to major cities



Excellent location opposite a thriving park that hosts regular events including food and film festivals



Multi-faith room within the home



Person-centred recruitment staff and the people we support have interests matched



Click the buttons to find out more about our Specialist Social Care Services in Yorkshire

Introduction

Our Projects

Our Model of Support - Residential Services

Residential Services

Beacon House, Bradford

Beckly, Halifax

Dene Brook, Rotherham

Dove Valley Mews, Barnsley

Gledholt, Huddersfield

Hawkstone, Keighley

Kirkside House, Leeds

Kirkside Lodge, Leeds

Langdale House, Huddersfield

Longfield House, Bradford

Norcott House, Liversedge

Norcott Lodge, Liversedge

Outwood, Horsforth

Oxley Woodhouse, Huddersfield

The Fields, Sheffield

Thornfield House, Bradford

Supported Living Services

Neurological Complex Care

Specialist Day Services

Case Study

Map

How to Make a Referral





Longfield House, Bradford

Oakleigh Road, Clayton, Bradford, West Yorkshire, Yorkshire & Humber BD14 6NP

Residential Services

Specialism: Learning Disabilities and Autism



18+ years



Mixed gender



9 placements in 5 living areas



Click here to visit our website

Located in the friendly village of Clayton in the suburbs of Bradford, Longfield House is a specialist residential service providing outcome focused care for adults with learning disabilities and associated complex needs who may have behaviours that challenge.

Person-centred planning is at the heart of everything we do and we are able to meet the changing needs of the people we support as they progress through their care pathway, while ensuring their safety is maintained and their independence supported.

Longfield House consists of five different living areas, including a five bed home and four single occupancy flats. The 5-bed home has communal living spaces with a lounge, dining room, and kitchen, and each person has their own en-suite facilities. There are also four individual flats, one in the main house and three in the coach house. These provide opportunities for individuals to be more independent and live in their own space. The flats can also be used to support those who require extra support or find it difficult to share space with others. Externally, there is a courtyard and a garden with plenty of space for individuals to have BBQs, garden parties, or simply sit and enjoy the outside.

The service is located on the outskirts of Bradford and has fantastic public transport links into Bradford and Halifax. In addition to the community facilities of the local towns and cities, there is also plenty to do in the nearby. The people we support are encouraged to be involved in the local community as much or as little as they wish to be and there is no shortage of places to visit within walking distance too, including parks, farms, pubs and cafés.

In conjunction with the other local Cygnet residential services, we have some great projects that people we support can attend regularly including bakery, textiles, horticultural and education. These projects introduce vocational and learning activities designed to give individuals the opportunity to learn valuable skills and develop confidence.

Our community links:

- > Cinemas
- > Local parks
- > Colleges
- > Shops, cafés and restaurants
- > Sports clubs
- > Great public transport links
- > Excellent local amenities
- > Community groups, including some for individuals with learning disabilities



Individuals are supported to attend **social clubs and groups** including some specifically for people with learning disabilities



Homely environment with 24/7 support

Specialist training delivered to staff tailored to the needs of the individual

Supporting individuals to express their views and **be involved in making decisions about their care**

Individuals can be supported to attend **local colleges** should they wish to



Click the buttons to find out more about our Specialist Social Care Services in Yorkshire

Introduction

Our Projects

Our Model of Support - Residential Services

Residential Services

Beacon House, Bradford

Beckly, Halifax

Dene Brook, Rotherham

Dove Valley Mews, Barnsley

Gledholt, Huddersfield

Hawkstone, Keighley

Kirkside House, Leeds

Kirkside Lodge, Leeds

Langdale House, Huddersfield

Longfield House, Bradford

Norcott House, Liversedge

Norcott Lodge, Liversedge

Outwood, Horsforth

Oxley Woodhouse, Huddersfield

The Fields, Sheffield

Thornfield House, Bradford

Supported Living Services

Neurological Complex Care

Specialist Day Services

Case Study

Map

How to Make a Referral





Norcott House, Liversedge

75 Leeds Road, Liversedge, West Yorkshire, Yorkshire & Humber WF15 6JA

Residential Services

Specialism: Learning Disabilities and Autism



18+ years



Mixed gender



11 placements in 4 living areas



Click here to visit our website

Located in the suburbs of Liversedge in West Yorkshire, Norcott House is a specialist residential service providing outcome-focused care for adults with learning disabilities and associated complex needs who may have behaviours that challenge.

Person-centred planning is at the heart of everything we do and we are able to meet the changing needs of the people we support as they progress through their care pathway, while ensuring their safety is maintained and their independence supported.

Norcott House offers four individualised living environments, comprising a four bedroom area, a three bedroom area, and two 2-bedroom spaces. Every accommodation provides its own self-contained living area, complete with a comfortable lounge, dining room, kitchen, and en-suite facilities, empowering individuals to live with the greatest possible independence.

Outside, the people we support can enjoy a large garden, perfect for BBQs, garden parties, or simply relaxing.

The service is located in-between Bradford, Leeds and Huddersfield, so with fantastic public transport links there is an abundance of community facilities including shopping centres, cinemas and leisure centres. The people we support are encouraged to be involved in the local community as much or as little as they wish to be and there is no shortage of places to visit within walking distance too including parks, pubs and cafés.

In conjunction with the other local Cygnet residential services, we have some great projects that individuals can attend regularly including bakery, textiles and gardening work. These projects introduce vocational and learning activities designed to give the people we support the opportunity to learn valuable skills and develop confidence.

Our community links:

- > Cinemas
- > Local parks
- > Community groups
- > Colleges
- > Shops, cafés and restaurants
- > Sports clubs
- > Great public transport links to Huddersfield, Leeds, Bradford and Wakefield
- > Excellent local amenities



Good relationship with the Community Learning Disability Team (CLDT)

People's Council Involvement



Accessible information available

Homely environment with 24/7 support



Click the buttons to find out more about our Specialist Social Care Services in Yorkshire

Introduction

Our Projects

Our Model of Support - Residential Services

Residential Services

Beacon House, Bradford

Beckly, Halifax

Dene Brook, Rotherham

Dove Valley Mews, Barnsley

Gledholt, Huddersfield

Hawkstone, Keighley

Kirkside House, Leeds

Kirkside Lodge, Leeds

Langdale House, Huddersfield

Longfield House, Bradford

Norcott House, Liversedge

Norcott Lodge, Liversedge

Outwood, Horsforth

Oxley Woodhouse, Huddersfield

The Fields, Sheffield

Thornfield House, Bradford

Supported Living Services

Neurological Complex Care

Specialist Day Services

Case Study

Map

How to Make a Referral





Norcott Lodge, Liversedge

75 Leeds Road, Liversedge, West Yorkshire, Yorkshire & Humber WF15 6JA

Residential Services

Specialism: Learning Disabilities and Autism



18+ years



Mixed gender



9 placements in 4 living areas



Click here to visit our website

Located in the suburbs of Liversedge in West Yorkshire, Norcott Lodge is a specialist residential service providing outcome-focused care for adults with learning disabilities and associated complex needs who may have behaviours that challenge.

Person-centred planning is at the heart of everything we do and we are able to meet the changing needs of the people we support as they progress through their care pathway, while ensuring their safety is maintained and their independence supported.

Norcott Lodge is housed in a modern building and comprises four distinct living environments. This includes a four bedroom and a three bedroom area, ideal for individuals who thrive in small group settings. Each of these accommodations boasts its own communal living space, complete with a kitchen diner, bathroom, and en-suite toilets. Furthermore, we feature two self-contained apartments specifically designed for individuals with more complex needs requiring enhanced one-to-one support. Outside, a spacious garden with various seating areas provides the perfect setting for outdoor activities, BBQs, and celebratory parties.

The service is located in-between Bradford, Leeds, and Huddersfield, so with fantastic public transport links, there is an abundance of community facilities, including shopping centres, cinemas and leisure centres. The people we support are encouraged to be involved in the local community as much or as little as they wish to be and there is no shortage of places to visit within walking distance too including parks, pubs and cafés.

In conjunction with the other local Cygnet residential services, we have some great projects that individuals can attend regularly including bakery, textiles, gardening and an education centre. These projects introduce vocational and learning activities designed to give people we support the opportunity to learn valuable skills and develop confidence.

Focus on **reducing restrictive practice**

Strong links with the Community Learning Disability Team (CLDT)

Homely environment with **24/7 support**

Staff support individuals on holidays and day trips

Support individuals in voluntary work placements

Regular parties to celebrate cultural celebrations - karaoke is always a favourite

Our community links:

- > Cinemas
- > Bowling
- > Local parks
- > Community groups
- > Colleges
- > Country Parks
- > Shops, cafés and restaurants
- > Sports clubs
- > Discos
- > Great public transport links to Huddersfield, Bradford, Wakefield and Leeds
- > Excellent local amenities



Click the buttons to find out more about our Specialist Social Care Services in Yorkshire

- Introduction
- Our Projects
- Our Model of Support - Residential Services
- Residential Services**
- Beacon House, Bradford
- Beckly, Halifax
- Dene Brook, Rotherham
- Dove Valley Mews, Barnsley
- Gledholt, Huddersfield
- Hawkstone, Keighley
- Kirkside House, Leeds
- Kirkside Lodge, Leeds
- Langdale House, Huddersfield
- Longfield House, Bradford
- Norcott House, Liversedge
- Norcott Lodge, Liversedge
- Outwood, Horsforth
- Oxley Woodhouse, Huddersfield
- The Fields, Sheffield
- Thornfield House, Bradford
- Supported Living Services
- Neurological Complex Care
- Specialist Day Services
- Case Study
- Map
- How to Make a Referral





Outwood, Horsforth

12 Outwood Lane, Horsforth, West Yorkshire, Yorkshire & Humber LS18 4JA

Residential Services

Specialism: Learning Disabilities and Autism



18+ years



Mixed gender



10 placements in 3 living areas



Click here to visit our website

Located in Horsforth, a charming village in the suburbs of Leeds, Outwood is a specialist residential service for adults. We provide outcome-focused care for individuals with learning disabilities and associated complex needs who may have behaviours that challenge.

We encourage and enable the individuals we support to lead full and happy lives. We work with them to ensure they have more choice and control in their lives. We find out their strengths, abilities and preferences so that the care provided can be as person-centred and meaningful to each individual as possible.

Outwood consists of an eight-bedroom main house and two one-bedroom single occupancy flats. The main house features eight en-suite bedrooms, three large communal lounges, a kitchen, and a dining room. The two flats are both self-contained, allowing individuals to live independently in their own space with staff support. Externally, there is a large garden with plenty of room for individuals to participate in sports and games or simply enjoy the outdoors.

We ensure that families and advocates are actively involved in an individual's care. Outwood maintains high staffing levels, which allows us to effectively meet the evolving needs of individuals as they progress through their care pathway.

The service is in a great location, enabling the people we support to benefit from excellent community facilities, including shopping centres, cinemas, pubs & cafés. Each individual is encouraged to be involved in the local community as much or as little as they wish to be.

In conjunction with other local Cygnet residential services, we offer fantastic projects that individuals can attend regularly, including bakery, textiles, and gardening work. These initiatives introduce vocational and learning activities designed to provide opportunities to acquire valuable skills and develop confidence in a safe and familiar environment.

Our community links:

- > Cinemas
- > Local parks
- > Community groups
- > Colleges
- > Shops, cafés and restaurants
- > Bowling
- > Short bus ride to Leeds City Centre
- > Excellent transport links and local amenities
- > Day services

Supporting individuals to enhance their social skills and attend day services



Attending galas and other community events at Kirkstall Abbey



Supporting individuals to attend local colleges



Supporting individuals to gain voluntary work in local charity shops



Click the buttons to find out more about our Specialist Social Care Services in Yorkshire

Introduction

Our Projects

Our Model of Support - Residential Services

Residential Services

Beacon House, Bradford

Beckly, Halifax

Dene Brook, Rotherham

Dove Valley Mews, Barnsley

Gledholt, Huddersfield

Hawkstone, Keighley

Kirkside House, Leeds

Kirkside Lodge, Leeds

Langdale House, Huddersfield

Longfield House, Bradford

Norcott House, Liversedge

Norcott Lodge, Liversedge

Outwood, Horsforth

Oxley Woodhouse, Huddersfield

The Fields, Sheffield

Thornfield House, Bradford

Supported Living Services

Neurological Complex Care

Specialist Day Services

Case Study

Map

How to Make a Referral





Oxley Woodhouse, Huddersfield

Woodhouse Hill, Huddersfield, West Yorkshire, Yorkshire & Humber HD2 1DH

Residential Services

Specialism: Learning Disabilities and Autism



18+ years



Mixed gender



17 placements in 7 living areas



[Click here to visit our website](#)

Oxley Woodhouse is a specialist residential service in Huddersfield, West Yorkshire, which supports people with learning disabilities, complex needs and behaviours that may challenge.

We encourage and enable the people we support to lead a full and happy life. We work with them to ensure they have more choice and control in their lives. We find out their strengths, abilities and preferences so that the care provided can be as person-centred and meaningful as possible.

Oxley Woodhouse is set in a beautiful 19th-century building that is steeped in character and history. The main house has two five-bed living areas and a male only three-bed living area. Each living area has a lounge, kitchen and dining space as well as en-suite facilities. The service has a large arts and crafts room alongside a cinema room.

Additionally, in the Lodge, there are four single occupancy flats. These flats are suitable for people with more challenging behaviour who require additional staff support. Each flat has its own lounge, dining room, kitchen and en-suite facilities.

Some of our bedrooms that are located on the ground floor are suitable for people who have mobility issues and perhaps require a wheelchair. Externally, there is a large garden with enough space for individuals to mix and have BBQ's or to have their own time enjoying the outdoor space.



Gardening projects – hosted in the large garden where individuals learn how to take care of animals and grow produce

Textiles project – giving individuals the opportunity to learn to sew and create new things whilst earning money each week

Bakery project – Individuals are taught how to make cakes and other sweet treats, whilst also learning about the safety aspect of a kitchen



Easy read and other accessible information available to all

Person-centred recruitment – Individuals are involved in the interview process



Our community links:

- > Great public transport links to major local towns and cities
- > Canal walks
- > Retail parks and local shops
- > Cinemas
- > Bowling alleys
- > Restaurants, pubs and cafés



Click the buttons to find out more about our Specialist Social Care Services in Yorkshire

- Introduction
- Our Projects
- Our Model of Support - Residential Services
- Residential Services**
- Beacon House, Bradford
- Beckly, Halifax
- Dene Brook, Rotherham
- Dove Valley Mews, Barnsley
- Gledholt, Huddersfield
- Hawkstone, Keighley
- Kirkside House, Leeds
- Kirkside Lodge, Leeds
- Langdale House, Huddersfield
- Longfield House, Bradford
- Norcott House, Liversedge
- Norcott Lodge, Liversedge
- Outwood, Horsforth
- Oxley Woodhouse, Huddersfield
- The Fields, Sheffield
- Thornfield House, Bradford
- Supported Living Services
- Neurological Complex Care
- Specialist Day Services
- Case Study
- Map
- How to Make a Referral





The Fields, Sheffield

Spa Lane, Woodhouse, Sheffield, S13 7PG

Residential Services

Specialism: Learning Disabilities and Autism



17+ years



Mixed gender



54 Placements



Click here to visit our website

The Fields is a specialist residential service in Sheffield, South Yorkshire for adults with learning disabilities who may have behaviours that challenge as well as associated complex needs.

We encourage and enable the individuals we support to lead a full and happy life. We work with them to ensure they have more choice and control in their lives. We find out their strengths, abilities and preferences so that the care provided can be as person-centred and meaningful to each individual as possible.

The Fields is split into seven different living areas, six of which are residential and one is a registered nursing service.

Each living area has its own garden, lounge, kitchen and dining space as well as en-suite facilities. Central to all the living areas is a large open space called the sensory garden. This space is available for all people we support and is a popular space for activities, parties, live shows and entertainers.

The Fields is situated in Woodhouse in Sheffield, which is a vibrant residential area, with easy access to shops and local amenities. The Fields has access to its own fleet of transport, which is used to take people to appointments and for home visits. The people we support are also able to engage in community activities with some of the favourite being visiting the zoo, plane spotting at the airport, museums and trips to the seaside.

The two activity coordinators support individuals in creating their person-centred activity planners and developing daily living skills both inside the home and out in the community.

We enable each individual to build upon their skills to achieve further independence and confidence, leading to a better quality of life. We have one residential service with nursing, however the nurses (RGN, RNLD & RMN) in this living unit oversee the other units providing additional support to the team should someone become unwell.

On site we also have a Specialist Day Service that has numerous sensory rooms and a large hydrotherapy pool, for more information visit the Sheffield Day Services page.

Our facilities:

- En-suite bedrooms
- Lounges
- Gardens
- Sensory garden hub with coffee shop
- Therapy room
- Dining room
- Cinema room
- Kitchens
- On-site Specialist Day Service



On-site therapy room – enabling aromatherapists, chiropodists and opticians to visit people in the home

Regular themed days – the people we support celebrate by decorating the service and having parties



Click the buttons to find out more about our Specialist Social Care Services in Yorkshire

Introduction

Our Projects

Our Model of Support - Residential Services

Residential Services

Beacon House, Bradford

Beckly, Halifax

Dene Brook, Rotherham

Dove Valley Mews, Barnsley

Gledholt, Huddersfield

Hawkstone, Keighley

Kirkside House, Leeds

Kirkside Lodge, Leeds

Langdale House, Huddersfield

Longfield House, Bradford

Norcott House, Liversedge

Norcott Lodge, Liversedge

Outwood, Horsforth

Oxley Woodhouse, Huddersfield

The Fields, Sheffield

Thornfield House, Bradford

Supported Living Services

Neurological Complex Care

Specialist Day Services

Case Study

Map

How to Make a Referral





Thornfield House, Bradford

261 Highfield Road, Idle, Bradford, West Yorkshire, Yorkshire & Humber BD10 8QY

Residential Services

Specialism: Learning Disabilities and Autism



18+ years



Mixed gender



7 placements



Click here to visit our website

Thornfield House is a specialist residential service supporting individuals with learning disabilities, complex needs and behaviours that may challenge in Bradford, West Yorkshire.

Thornfield House supports seven individuals and offers spacious communal areas, including a lounge, dining room, kitchen, and a large activity / cinema room. Externally, there are beautiful gardens to the front and the rear of the building which feature plenty of space for outdoor games, bbq, seating area and a sensory room.

Located in the suburbs of Idle in Bradford, the home is within close proximity to local services and amenities, including major transport links. The people we support can not only access local towns and cities, but are also very close to the beautiful Yorkshire countryside.

We believe that it is essential for an individual's wellbeing, to have purpose in their day-to-day life and to learn new skills. Different work projects have been established to introduce vocational and learning activities where the individuals we support can learn valuable life skills and develop confidence.

Ongoing assessments enable us to meet the changing needs of individuals as they progress through their care pathway while ensuring their safety is maintained and their independence supported. Regular review meetings involving the individuals, their family and professionals are held to review outcomes, set new goals and re-assess support levels as individuals' progress.

The management and staff team have comprehensive training, including all mandatory training and bespoke training specific to the needs of the people we support.

People come to Thornfield House for different reasons; they may require more support than can be provided in a supported living setting or they may be moving along their care pathway from a hospital placement. Whatever the reason, the team can offer specialist input based on individual need to deliver flexible and effective support.

★ ★ ★ ★ ★
Rated 'Good' with the CQC

Great local transport links into Bradford and Shipley



In house activity leads ensuring individuals receive person-centred and meaningful activities



Monthly house meetings



Easy read and other accessible information available to all

Our community links:

- Local cafés, restaurants and pubs
- Local colleges, gyms and libraries
- Bradford and Shipley town centre – shops, cinema, museums
- Local parks including Otley Chevin and Yeardon Tarn



Click the buttons to find out more about our Specialist Social Care Services in Yorkshire

Introduction

Our Projects

Our Model of Support - Residential Services

Residential Services

Beacon House, Bradford

Beckly, Halifax

Dene Brook, Rotherham

Dove Valley Mews, Barnsley

Gledholt, Huddersfield

Hawkstone, Keighley

Kirkside House, Leeds

Kirkside Lodge, Leeds

Langdale House, Huddersfield

Longfield House, Bradford

Norcott House, Liversedge

Norcott Lodge, Liversedge

Outwood, Horsforth

Oxley Woodhouse, Huddersfield

The Fields, Sheffield

Thornfield House, Bradford

Supported Living Services

Neurological Complex Care

Specialist Day Services

Case Study

Map

How to Make a Referral





Supported Living in Huddersfield (Ashfield)

Registered address: Oxley Woodhouse, Woodhouse Hill, Huddersfield, West Yorkshire HD2 1DH

Supported Living Services

Specialism: Learning Disabilities, Autism and Mental Health



18+ years



Male or female



6 tenancies



[Click here to visit our website](#)



Click the buttons to find out more about our Specialist Social Care Services in Yorkshire

- Introduction
- Our Projects
- Our Model of Support - Residential Services
- Residential Services
- Supported Living Services**
- Supported Living in Huddersfield (Ashfield)
- Supported Living in Huddersfield (Gledcliffe)
- Supported Living in Leeds
- Neurological Complex Care
- Specialist Day Services
- Case Study
- Map
- How to Make a Referral

We know how important it is for individuals to have the right support so they can live the life they want to live.

This specialist service supports individuals who may have been previously detained within a hospital setting and are ready for a step-down placement within the local community, and who may have a diagnosis learning disabilities, autism or mental health needs.

Individuals are supported to hold their own tenancy agreement with a registered housing association.

Situated in the heart of Huddersfield, the service has six tenancies in three separate living areas, with their own outdoor space and good transport links to community facilities.

Each tenant is allocated an experienced and consistent staff team and training is bespoke to individual support needs, which enables tenants to live as independently and safely as possible.

Helping individuals to **set and achieve goals as part of their support plan**



Easy read and other **accessible information** available



Working with individuals to **find out their strengths, abilities and references**

We get to know them, their families, carers advocates and other people who are important to them and their care and support





Supported Living in Huddersfield (Gledcliffe)

Registered address: Oxley Woodhouse, Woodhouse Hill, Huddersfield, West Yorkshire HD2 1DH

Supported Living Services

Specialism: Learning Disabilities, Autism and Mental Health



18+ years



Male or female



6 tenancies



[Click here to visit our website](#)

We know how important it is for individuals to have the right support so they can live the life they want to live.

We support individuals with learning disabilities, autism, mental health needs and behaviours that challenge. This specialist service supports individuals who may have been previously detained within a hospital setting and are ready for a step-down placement within the local community.

Individuals are supported to hold their own tenancy agreement with a registered housing association.

Situated in the heart of the community in Huddersfield, the service has six tenancies in two separate living areas, with their own outdoor space and good transport links to community facilities.

Each tenant is allocated an experienced and consistent staff team and training is bespoke to individual support needs, which enables tenants to live as independently and safely as possible.



Helping individuals to build relationships and access whatever community activities they would like to take part in

We get to know them, their families, carers advocates and other people who are important to them and their care and support

Working with individuals to find out their strengths, abilities and references

Providing person-centred practical help for individuals - such as training and support on how to manage their home, their money, gardening, housework and healthy living



i [Click the buttons](#) to find out more about our Specialist Social Care Services in Yorkshire

- [Introduction](#)
- [Our Projects](#)
- [Our Model of Support - Residential Services](#)
- [Residential Services](#)
- [Supported Living Services](#)**
- [Supported Living in Huddersfield \(Ashfield\)](#)
- [Supported Living in Huddersfield \(Gledcliffe\)](#)
- [Supported Living in Leeds](#)
- [Neurological Complex Care](#)
- [Specialist Day Services](#)
- [Case Study](#)
- [Map](#)
- [How to Make a Referral](#)





Supported Living in Leeds

Registered address: Oxley Woodhouse, Woodhouse Hill, Huddersfield, West Yorkshire HD2 1DH

Supported Living Services

Specialism: Learning Disabilities, Autism and Mental Health



18+ years



Male or female



18 tenancies



[Click here to visit our website](#)

We know how important it is for individuals to have the right support so they can live the life they want to live.

We support individuals with learning disabilities, autism, mental health needs and behaviours that challenge. This specialist service supports individuals who may have been previously detained within a hospital setting and are ready for a step-down placement with in the local community.

Individuals are supported to hold their own tenancy agreement with a registered housing association.

Situated in the heart of the community in Leeds, the service has 14 single occupancy apartments and four single occupancy bungalows, with their own outdoor space and good transport links to community facilities.

Offering experienced, trained staff twenty-four hours a day, the service benefits from a shared core staffing team.

Each tenant is allocated an experienced and consistent staff team and training is bespoke to individual support needs, which enables tenants to live as independently and safely as possible.

Helping individuals to build relationships and access whatever community activities they would like to take part in



Helping individuals to set and achieve goals as part of their support plan



Easy read and other accessible information available to individuals



Easy read and other accessible information available to individuals

We get to know them, their families, carers advocates and other people who are important to them and their care and support



i **Click the buttons to find out more about our Specialist Social Care Services in Yorkshire**

- Introduction
- Our Projects
- Our Model of Support - Residential Services
- Residential Services
- Supported Living Services**
- Supported Living in Huddersfield (Ashfield)
- Supported Living in Huddersfield (Gledcliffe)
- Supported Living in Leeds
- Neurological Complex Care
- Specialist Day Services
- Case Study
- Map
- How to Make a Referral





The Daley Care Centre, Sheffield

2A Haywood Lane, Deepcar, Sheffield S36 2QE

Neurological Complex Care

Specialism: Acquired Brain Injuries



18+ years



Mixed gender



24 Placements



Click here to visit our website

The Daley Care Centre is a specialist Neurological Complex Care service in Sheffield, dedicated to supporting individuals with high nursing needs, Acquired Brain Injury (ABI) and complex neurological conditions.

Our dedicated team of registered nurses, support workers, and in-house therapists work together to deliver comprehensive care and support with measurable outcomes.

The Daley Care Centre is located in the beautiful, tranquil countryside setting of Deepcar just 10 minutes outside of Sheffield city centre. It provides a warm, homely setting with all of the on-site equipment and facilities needed to offer complex medical care to individuals with a wide range of conditions.

Dedicated staff create a bespoke person-centred plan tailored for each individual within our care. Utilising any necessary expertise within the MDT such as speech and language therapy, occupational therapy and complex care trained nursing staff, informed by individuals, their families and support network.

Our Specialisms:

- > Severe or moderate Acquired Brain Injury (ABI)
- > Other neurological conditions, stroke, and spinal injuries
- > Early or late post-injury, long-term, short-term, respite, and lifelong care
- > Tracheostomy and ventilator care
- > Can support individuals with some complex needs and behaviours (assessed on an individual basis)

Regular meetings for the individuals we support

On-site gym

Sensory garden and tranquil outdoor spaces

Specialised therapy rooms / Sensory areas

Our Community Links:

- > Local leisure centre
- > Access to off-site hydrotherapy pool
- > Local shops, cafes, markets and pubs
- > Local parks and woodlands



Click the buttons to find out more about our Specialist Social Care Services in Yorkshire

- Introduction
- Our Projects
- Our Model of Support - Residential Services
- Residential Services
- Supported Living Services
- Neurological Complex Care**
- The Daley Care Centre
- Specialist Day Services
- Case Study
- Map
- How to Make a Referral





Sheffield Day Services

Spa Lane, Woodhouse, Sheffield, S13 7PG

Day Services

Specialism: Learning Disabilities, Autism, Physical Disabilities and Complex Health Needs

 16+ years

 Male or female

 [Click here to visit our website](#)

Sheffield Day Services support people with a primary diagnosis of a learning disability, in addition to those with complex health needs, physical disabilities and autism.

We aim to enhance the quality of life of the individuals who attend the service. We focus on demonstrating outcomes and value through our activities.

Our on-site multi-disciplinary team is led by three key disciplines: occupational therapy, physiotherapy and speech and language therapy. Our approach allows us to develop a clear and focused activity plan that works towards maximising each individual's potential.

With our staff and a clinical team including a nurse, our staffing model provides one member of staff for every two individuals as a minimum, enabling us to deliver a meaningful activity plan for each person we care for. Our activity plans are person-centred and co-produced, each one considering their likes, dislikes, interests and hobbies.

We have several groups that run in different areas of the service enabling us to provide for different social, sensory and support needs. This includes facilities for those who would prefer to complete activities alone.

We have a dedicated vehicle that is available to transport individuals to and from home, as well as for regular trips out and about into the community and further afield.

Our days are flexible and with the involvement of the individual and their carers, we maximise the time that is spent while they are with us. Our service provides flexibility for families and carers, with opening times from 9am to 5pm Monday to Friday (including bank holidays). We are also able to provide a service to assess the needs of an individual, as a standalone service.

Our facilities:

- > Multiple sensory rooms including soft play areas
- > Large open space activity rooms
- > Hydropool including a Jacuzzi
- > 2 gardens with raised beds allowing individuals to plant
- > Rebound trampoline allowing rebound therapy
- > IT facilities



The individuals we support:

- > Primary diagnosis of learning disability
- > May be wheelchair users
- > May have complex physical disabilities and require specialist interventions such as PEG or NG feeding
- > May have autism
- > May have communication difficulties
- > Require full or part-time, specialist day services
- > Will be living at home or in a community setting such as a residential home



Click the buttons to find out more about our Specialist Social Care Services in Yorkshire

- Introduction
- Our Projects
- Our Model of Support - Residential Services
- Residential Services
- Supported Living Services
- Neurological Complex Care
- Day Services**
- Sheffield Day Services
- Case Study
- Map
- How to Make a Referral



Daniel's* Journey

Langdale House, West Yorkshire

Specialist residential service supporting individuals with learning disabilities, complex needs and behaviours that may challenge



Click the buttons to find out more about our Specialist Social Care Services in Yorkshire

Introduction
Our Projects
Our Model of Support - Residential Services
Residential Services
Supported Living Services
Neurological Complex Care
Specialist Day Services

Case Study

Map

How to Make a Referral

Daniel's history

Prior to Daniel's admission to Langdale House, he was living at his family home. Every aspect of his life was planned and structured and any deviation, no matter how mild, would immediately cause anxieties and heightened behaviours. As a result, he would regularly become physically violent.

The family relationships gradually became strained and the frequency of behaviours increased. Daniel was causing damage to the family home and self-injuring; the family felt they were at crisis point and sought alternative care.



When Daniel came to us

When Daniel moved to Langdale House, he struggled with the changes of moving from his previous routine at home. This resulted in him being violent to staff during periods of heightened anxiety - this was a frequent occurrence.

At first, Daniel would not use the service's vehicle, this was due to one of his major triggers being road signs. He would spend a large amount of time planning his routes. This had an impact on Daniel, it meant he couldn't go on holiday as he needed to be within walking distance of a train station.

Another significant trigger for him was his diet. When he joined us he would only eat branded foods, prepared in a certain way, so the consistency, texture and taste remained as similar to him as possible. Under no circumstances would he be anywhere near any fruit or vegetables.

Daniel avoided any daily living tasks including tidying his room and doing the laundry. Any attempts around education would last only minutes before he would tell staff to go away as he found education to be pointless and repetitive.

Daniel's care

At Langdale House, we believe that it is essential for individual's wellbeing to have purpose in their day-to-day life and to learn new skills. Our staff have a variety of bespoke training to meet the needs of the individuals we support and regular review meetings involving the people in our care, their family and professionals are held. Outcomes are reviewed, new goals are set and as they progress, their support levels are re-assessed.

The team at Langdale House used a consistent, staged desensitisation plan to allow Daniel to build confidence with the things he struggled with. With staff support he progressed to be able to use cars, taxis and buses. The staff learnt of his passion for Christmas so looked into a trip to Lapland to see the 'Real Father Christmas'. By encouraging him to be involved in every part of the planning, including a short practise flight, he successfully visited Lapland.

Again by using staged desensitisation, the team were able to teach Daniel additional coping strategies, which means he can now enter the kitchen with foods in sight that previously would have prevented him from entering. He has also began to make quite a number of his own meals with staff support.

Cygnets run an education project at nearby Oxley Woodhouse, offering ASDAN accredited courses. The team adapted the programme to fit Daniel's needs and he now has the education project as part of his weekly activity planner, travels there in traffic on the route that he chooses, and is happy going to learn.

Daniel today

Daniel remains settled within Langdale House and is continuing to progress using the strategies that have proved effective. Although some structure remains day to day, new activities have been and continue to be introduced on a gradual basis.

He continues to attend the education project and has recently increased to two sessions per week. With consistency and a positive encouraging approach, he will now engage in helping staff with daily living tasks. His parents visit weekly and are always pleased to see the progression Daniel continues to make.

*Name has been changed to protect his identity

Map | Our specialist services by region

Residential Services

- 1 Beacon House,**
281 Beacon Road, Wibsey, Bradford, West Yorkshire, Yorkshire & Humber BD6 3DQ
T: **01274 501681**
- 2 Beckly,**
56 Cooper Lane, Shelf, Halifax, West Yorkshire, Yorkshire & Humber HX3 7RG
T: **01274 606350**
- 3 Dene Brook,**
Dalton Road, Dalton Parva, Rotherham, South Yorkshire, Yorkshire & Humber S65 3QQ
T: **01709 855029**
- 4 Dove Valley Mews,**
75 Park Street, Wombwell, Barnsley, South Yorkshire, Yorkshire & Humber S73 0HL
T: **01226 448770**
- 5 Gledholt,**
32 Greenhead Road, Huddersfield, Yorkshire & Humber HD1 4EZ
T: **01484 507810**
- 6 Hawkstone,**
Shann Lane, Off Spring Garden Lane, Keighley, West Yorkshire, Yorkshire & Humber BD20 6NA
T: **01535 288470**
- 7 Kirkside House,**
1 Spen Lane, Kirkstall, Leeds, West Yorkshire, Yorkshire & Humber LS5 3EJ
T: **0113 278 4131**
- 8 Kirkside Lodge,**
1 Spen Lane, Kirkstall, Leeds, West Yorkshire, Yorkshire & Humber LS5 3EJ
T: **0113 278 6834**
- 9 Langdale House,**
56 Gledholt Road, Huddersfield, West Yorkshire, Yorkshire & Humber HD1 4HR
T: **01484 429226**
- 10 Longfield House,**
Oakleigh Road, Clayton, Bradford, West Yorkshire, Yorkshire & Humber BD14 6NP
T: **01274 882086**

11 Norcott House,
75 Leeds Road, Liversedge, West Yorkshire, Yorkshire & Humber WF15 6JA
T: **01924 409 100**

12 Norcott Lodge,
75 Leeds Road, Liversedge, West Yorkshire, Yorkshire & Humber WF15 6JA
T: **01924 408 505**

13 Outwood,
12 Outwood Lane, Horsforth, West Yorkshire, Yorkshire & Humber LS18 4JA
T: **0113 258 6144**

14 Oxley Woodhouse,
Woodhouse Hill, Fartown, Huddersfield, West Yorkshire, Yorkshire & Humber HD2 1DH
T: **01484 248143**

15 Thornfield House,
261 Highfield Road, Idle, Bradford, West Yorkshire, Yorkshire & Humber BD10 8QY
T: **01274 414165**

16 The Fields,
Spa Lane, Woodhouse, Sheffield, S13 7PG
T: **0114 2691 144**

Supported Living Services

17 Supported Living In Huddersfield (Ashfield),
Registered address:
Yorkshire Supported Living, Oxley Woodhouse, Woodhouse Hill, Huddersfield, West Yorkshire HD2 1DH
T: **01484 427580**

18 Supported Living In Huddersfield (Gledcliffe),
Registered address:
Yorkshire Supported Living, Oxley Woodhouse, Woodhouse Hill, Huddersfield, West Yorkshire HD2 1DH
T: **01484 427580**

19 Supported Living In Leeds,
Registered address:
Yorkshire Supported Living, Oxley Woodhouse, Woodhouse Hill, Huddersfield, West Yorkshire HD2 1DH
T: **01484 427580**

Neurological Complex Care

20 The Daley Care Centre,
2A Haywood Lane, Deepcar, Sheffield, S36 2QE
T: **0114 283 7200**

Day Services

16 The Fields,
Spa Lane, Woodhouse, Sheffield, S13 7PG
T: **0114 2691 144**

21 Sheffield Day Services,
Spa Lane, Woodhouse, Sheffield, S13 7PG
T: **0114 2691 177**

YORKSHIRE & HUMBER

NORTH YORKSHIRE

NORTH WEST

WEST YORKSHIRE

SOUTH YORKSHIRE

SHEFFIELD

EAST MIDLANDS

THE HUMBER EAST RIDING OF YORKSHIRE



Click the buttons to find out more about our Specialist Social Care Services in Yorkshire

Introduction
Our Projects
Our Model of Support - Residential Services
Residential Services
Supported Living Services
Neurological Complex Care
Specialist Day Services
Case Study
Map
How to Make a Referral

How to Make a Referral

For more information or to make a referral, please contact your regional Business Relationship Manager or email: sc.referrals@cygnethealth.co.uk

- 1** Referral made to Cygnet Social Care and a desktop assessment is undertaken to review suitability for placement
- 2** If a suitable placement is identified, an assessment is arranged and undertaken by our specialist team
- 3** Feedback is provided on whether our service can meet the individual's needs
- 4** Detailed placement proposal is formulated to include care plans and funding information
- 5** Once placement is confirmed, transition plans are developed with all relevant stakeholders and admission date is agreed



Social Care Referrals



Click the buttons to find out more about our Specialist Social Care Services in Yorkshire

- Introduction
- Our Projects
- Our Model of Support - Residential Services
- Residential Services
- Supported Living Services
- Neurological Complex Care
- Specialist Day Services
- Case Study
- Map
- How to Make a Referral**





Improving lives together

 **Cygnet**

4 Millbank, 3rd Floor,
Westminster, London
SW1P 3JA

 **0207 123 5706**

www.cygnetgroup.com

Follow us on social media:

CYG-970 | Date of Preparation: 02/02/26

Integrity

Trust

Empower

Respect

Care