



Improving lives together

Specialist Social Care Services in the North West of England

Supporting People with learning Disabilities, Autism and Complex Needs

Welcome

Cygnet was established in 1988. Since then, we have developed a wide range of health and social care services for individuals with mental health needs, autism and learning disabilities within the UK.

Through our values of Integrity, Trust, Empower, Respect and Care we take pride in the services we offer and the outcomes we enable individuals in our care to achieve.



We provide services in England, Scotland and Wales and our expert and highly dedicated care team of almost **13,000 employees** help more than **8,300 individuals** each year across **150 services** to consistently make a positive difference to their lives.



We maintain a good relationship with our quality regulators and undergo regular inspections, with **81% of our services rated 'Good' or 'Outstanding'**.



Click the buttons to find out more about our South West and South Wales Services

Introduction

[Our Model of Support – Residential Services](#)

[Residential Services](#)

[Supported Living Services](#)

[Case Study](#)

[Map](#)

[How to Make a Referral](#)

Contents

Introduction	03
Our Model of Support – Residential Services	04
Residential Services	
Broughton Lodge, Cheshire	05
Glyn House, Staffordshire	06
Lowry House, Lancashire	07
Morgan House, Staffordshire	08
1 Vincent Court, Blackburn	09
Woodrow House, Cheshire	10
Supported Living Services	
Supported Living in Macclesfield	11
Supported Living in Preston	12
Supported Living in Warrington	13
Supported Living in Wigan Central	14
Supported Living in Wigan South	15
Case Study	16
Map	17
How to Make a Referral	18



Introduction

Our priority is to ensure that people with learning disabilities enjoy the same right to a happy and fulfilled life as others. We ensure that people in our care feel safe in their environment, are understood and are able to communicate to the best of their ability. Most importantly, with the right support and help, we empower each individual in our care to successfully progress to a community-based service that is suitable for their needs.

Our services throughout the North West have considerable experience and expertise in supporting individuals with learning disability, autism and complex needs to develop independent skills and to live an active and happy life.

The services we offer in the region are Residential Services and Supported Living Services.

The people we support:

- > Adults from the age of 17/18+ years
- > Individuals with a learning disability, autism or an acquired brain injury, accompanied with behaviours that challenge including mental illness or a forensic background
- > Individuals with a secondary diagnosis of autism, personality disorder or dementia
- > May have communication challenges
- > May have associated complex needs



17/18+ years



Mixed Gender



Mental Health Act Status: Informal



Click the buttons to find out more about our South West and South Wales Services

Introduction

[Our Model of Support – Residential Services](#)

[Residential Services](#)

[Supported Living Services](#)

[Case Study](#)

[Map](#)

[How to Make a Referral](#)



Our Model of Support

At Cygnet Social Care we believe that each individual with a **learning disability** has the right to a happy and fulfilled life regardless of their level of support.

To help guide us and make sure we are all working together to achieve this we have formed **Our Model of Support for our Residential Services**. A guide that shows what we do as an organisation to support individuals with **learning disabilities**.

i Click the buttons to find out more about our South West and South Wales Services

Introduction

Our Model of Support – Residential Services

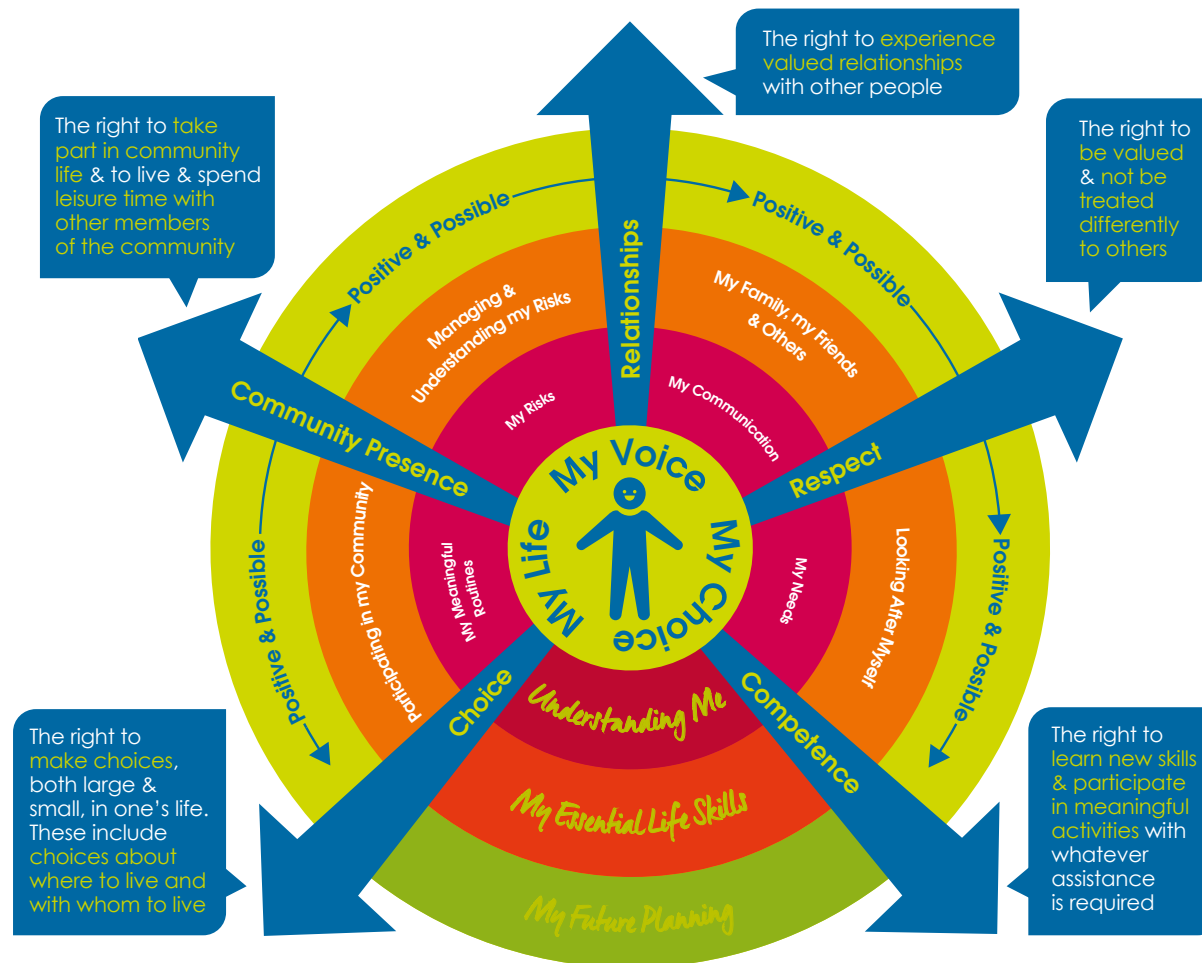
Residential Services

Supported Living Services

Case Study

Map

How to Make a Referral





Broughton Lodge, Cheshire

London Road, Oak Grove, Macclesfield, Cheshire North West SK11 0JG

Residential Services

Specialism: Learning Disabilities & Autism



18+ years



Mixed Gender



20 placements

Broughton Lodge is a specialist residential service for adults with autism and a learning disability who may present with behaviours that challenge. We aim to provide a safe, comfortable and effective care environment for those in our care, promoting independence and community integration. On site we have our multi-disciplinary team (MDT) who assist and support us to provide outcome based care and support pathways.

Depending on the individual's level of need, we have three living areas within the service offering different levels of support, including support for young men and women leaving an educational provision:

- > **Sutton** (eight placements) & **Langley** (eight placements) provide a high level of support for individuals who may be stepping down from a hospital setting or have experienced multiple placement breakdowns.
- > **Bosley** (four placements) supports individuals who are preparing to move onto supported living. They provide a structured programme of vocational activity and daily living skills to enable the individual to experience a less restrictive environment safely.

As part of our care pathway, our service enables residents to build upon earlier learnt skills to achieve further independence, self-advocacy and confidence leading to better quality of life. Residents can gain skills through extended learning via accredited platforms.

Our staff use non-aversive positive approaches and are trained in specialised behaviour interventions and sensory integration strategies.

Our community links:

- > Cafés and restaurants
- > Libraries
- > Shops
- > Countryside walks and parks



Our facilities:

- > En-suite bedrooms, which residents are supported to personalise
- > Multiple good sized living and dining areas in all areas of the service
- > Activities of Daily Living (ADL) skills kitchens
- > Sensory room
- > 4 large gardens with seating areas and outdoor activities
- > Large activity room containing a multisensory projector, pool table, exercise equipment and a large interactive tablet



Click the buttons to find out more about our South West and South Wales Services

Introduction

Our Model of Support – Residential Services

Residential Services

Broughton Lodge, Cheshire

Glyn House, Staffordshire

Lowry House, Lancashire

Morgan House, Staffordshire

1 Vincent Court, Blackburn

Woodrow House, Cheshire

Supported Living Services

Case Study

Map

How to Make a Referral

On-site multi-disciplinary team consisting of occupational therapy, speech and language therapy, psychology and psychiatry



You said we did board with actions from monthly resident house meetings



Regular person-centred meal planning / taster sessions with chef (families invited too)



Implemented reducing restrictive practice



Person-centred recruitment Recruiting staff to match the interests of the individual



Liam's Journey

Find out more >

Read about how the team at Broughton Lodge transformed Liam's life.



Glyn House, Staffordshire

78 Uttoxeter Road, Blythe Bridge, Stoke-on-Trent, Staffordshire, West Midlands ST11 9JG

Residential Services

Specialism: Learning Disabilities and Autism

18+ years

Mixed Gender

5 placements

Glyn House supports people with autism, learning disabilities and complex behavioural support needs. We provide specialist care and support which is tailored to individual needs, promoting independence and community integration.

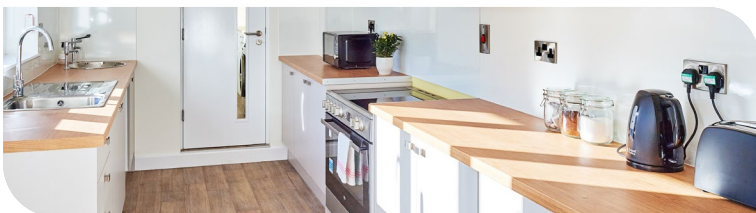
This service provides specialist care for those on their care pathway from children's to adult services. It also supports young adults who require highly tailored interventions to address their individual needs effectively.

Situated in the bustling residential area of Blythe Bridge, Stoke-on-Trent, Glyn House is a large detached property, which benefits from excellent transport links, with Blythe Bridge station located half a mile away and Stoke-on-Trent less than a ten-minute drive.

In the service we have a number of communal areas for individuals including a lounge, conservatory, dining room, sensory room as well as a well-equipped activity room. Promoting an individuals independence is very important to the team and the people we support are encouraged to prepare food and drink for themselves and their visitors. Developing self-care and daily living skills is a key element of daily life at Glyn House. Externally there is a large garden with plenty of green space allowing individuals to relax and enjoy the outdoors.

Person-centred planning is at the heart of everything we do, based on the specific needs of the individuals we support.

We understand that consistency and continuity of care is really important, and will work with the individual, their family and other important individuals in their lives to ensure we can provide them with the very best support.



Our facilities:

- > Four accessible en-suite bedrooms, two of which are on the ground floor
- > One accessible single occupancy ground floor flat, offering an en-suite bedroom and an open-plan living area
- > The individuals we support are encouraged to personalise their own space
- > Communal kitchen, lounges (with comfortable seating), dining room and utility room
- > **Activity Room:** A vibrant space featuring board games, arts and crafts, a pool table, and table tennis
- > **Sensory Room:** Designed for relaxation and engagement, complete with a ball pit and glow in the dark painting
- > **Large Garden:** An expansive outdoor area offering an adult trampoline, an allotment for gardening enthusiasts, a greenhouse, and a courtyard perfect for outdoor games



Staff and the individuals we support enjoy a variety of holidays, including trips to safari parks, beaches, and beyond



Close links to local special education colleges



Regular themed days including exploring different foods, decorations and activities from around the world



Click the buttons to find out more about our South West and South Wales Services

[Introduction](#)

[Our Model of Support – Residential Services](#)

[Residential Services](#)

[Broughton Lodge, Cheshire](#)

[Glyn House, Staffordshire](#)

[Lowry House, Lancashire](#)

[Morgan House, Staffordshire](#)

[1 Vincent Court, Blackburn](#)

[Woodrow House, Cheshire](#)

[Supported Living Services](#)

[Case Study](#)

[Map](#)

[How to Make a Referral](#)



Ryan's Journey

[Find out more >](#)

Read about how the team at Glyn House transformed Ryan's life.



Lowry House, Lancashire

Pudding Lane, via Viner Way, Godley, Hyde, North West SK14 3BS

Outstanding ☆

Residential Services

Specialism: Learning Disabilities & Autism

17+ years

Mixed Gender

12 placements in single or dual occupancy apartments

Lowry House is a specialist residential service, supporting adults with learning disabilities, complex needs and behaviours that may challenge, including those with mental health needs.

We provide specialist care and support that is tailored to individual needs, promoting independence and community integration. We encourage and enable the residents to lead a full and happy life and work with them to find out their strengths, abilities and preferences so that their care can be as person-centred as possible.

There are single occupancy and dual occupancy apartments at Lowry House, allowing individuals to live in their own space or with another person. Each apartment has its own lounge, dining room, kitchen and bathroom facilities. The service also has some shared communal space for residents, including a well-equipped gym, games room, activity room and computer suite. Externally there is a nice garden that all residents have access to. The garden has plenty of space for outdoor activities and a vegetable garden where the residents learn how to grow their own produce.

Located in a great location in Hyde, Greater Manchester, the service is close to many community facilities. Major public transport links are on the doorstep and Manchester City Centre is a popular destination as it is just a short bus journey away.

Individuals may come to Lowry House for many reasons. They may be moving through their care pathway from a hospital setting or may require extra support during a difficult period in their life, or they could be on a pathway to a place of their own.



Our community links:

- > Hyde Leisure Pool
- > Country Parks
- > Bowling
- > Cinema
- > Local pubs, cafés & restaurants
- > Wheels for all cycling group
- > Ambitions Social Group



Rated 'Outstanding' in responsive with the CQC

Achieved the Dignity in Care Award 



Close links with a number of groups that cater for individuals with learning disabilities, including cycling, football and social groups 

"All the staff support me well and listen to all of my concerns and how I wish to be supported." Resident

In-house multi-disciplinary team (MDT) including psychology, speech and language therapy and occupational therapy 

i Click the buttons to find out more about our South West and South Wales Services

- Introduction
- Our Model of Support – Residential Services
- Residential Services**
- Broughton Lodge, Cheshire
- Glyn House, Staffordshire
- Lowry House, Lancashire
- Morgan House, Staffordshire
- 1 Vincent Court, Blackburn
- Woodrow House, Cheshire
- Supported Living Services
- Case Study
- Map
- How to Make a Referral





Morgan House, Staffordshire

86 Uttoxeter Road, Blythe Bridge, Stoke-on-Trent, Staffordshire ST11 9JG

Residential Services

Specialism: Mental Health

18+ years

Mixed Gender

5 placements

Morgan House is a residential service, located in Stoke-on Trent for five people who are ready to live more independently in the community. It offers a safe, comfortable, homely setting to provide a therapeutic environment that empowers the people in our care to meet personal goals and live fulfilling lives.

At Morgan House, we concentrate on community-based activities with the residents, such as the use of public transport, shopping, accessing community groups, education and vocational therapy, job placements, work experience, and development of hobbies and interests.

Our residents need support to build their confidence, set aspirations and help to achieve their goals. Some need more practical assistance to manage their own finances, budget plan or learn to cook.

Each resident has a bespoke care plan with the ultimate aim of living as independently as possible. Developing self-care and daily living skills are a key element of daily life and person-centred planning is at the heart of everything we do, based on the specific needs of the people we support.

Our staff help give residents the opportunity to raise any problems or concerns and provide a supportive environment for them to live fulfilling lives in line with their own needs and with consideration for the local community and neighbours. Staff are available to provide 1:1 and individualised care and support.

The service has a core staffing team available, 24 hours a day to support the residents with their integration into the local community.

In the service, we have a number of communal areas for individuals including a lounge, conservatory, dining room, sensory room as well as a well-equipped activity room.



 Supporting people to achieve their full potential



i Click the buttons to find out more about our South West and South Wales Services

- Introduction
- Our Model of Support – Residential Services
- Residential Services**
- Broughton Lodge, Cheshire
- Glyn House, Staffordshire
- Lowry House, Lancashire
- Morgan House, Staffordshire
- 1 Vincent Court, Blackburn
- Woodrow House, Cheshire
- Supported Living Services
- Case Study
- Map
- How to Make a Referral





1 Vincent Court, Blackburn

1 Vincent Court, Blackburn, Lancashire, BB2 4LD

Residential Services

Specialism: Mental Health + Specialist Deaf

 18+ years

 Male

 5 placements

Vincent Court is a five-bed community residential service for deaf men with mental health needs.

We can accept referrals from inpatient, secure services and community placements, whilst also providing a pathway for individuals on Bridge Hampton, our Low Secure Mental Health and Specialist Deaf Service within Cygnet Bury Dunes.

We offer a safe, comfortable and homely setting that enables individuals to focus on their continued recovery and transition to a more independent lifestyle – with the advantage of community outreach provided by the multidisciplinary team (MDT) from Bridge Hampton. This includes having an experienced consultant psychiatrist specialising in deaf mental health taking on the role of the community psychiatrist (without the need for local community services).

Vincent Court is a detached five bedroom house, all bedrooms have en-suite facilities. Our highly-experienced team are trained in British Sign Language. We endeavour to provide a Total Communication and culturally affirmative environment, and believe that individuals should be considered holistically. Our team will work collaboratively with residents, their family and community teams.



Our community links:

- > Leisure centre
- > The Deaf Village
- > Great public transport links
- > Libraries
- > Supermarkets
- > Cafés
- > Restaurants

Supporting people in our care to access education and vocational studies



We empower the men we support to enable them to learn and practice skills and live meaningful lives in the community



Individuals are supported to have maximum choice and control of their lives



Click the buttons to find out more about our South West and South Wales Services

Introduction

Our Model of Support – Residential Services

Residential Services

Broughton Lodge, Cheshire

Glyn House, Staffordshire

Lowry House, Lancashire

Morgan House, Staffordshire

1 Vincent Court, Blackburn

Woodrow House, Cheshire

Supported Living Services

Case Study

Map

How to Make a Referral





Woodrow House, Cheshire

1 Brownsville Road, Stockport, Cheshire, North West SK4 4PE

Outstanding ☆

Residential Services

Specialism: Learning Disabilities & Autism

18+ years

Mixed Gender

9 placements in 1 living unit and 5 self-contained apartments

Woodrow House is our community specialist residential home providing outcome focused care for adults with learning disabilities, who may have behaviours that challenge and associated complex needs.

Woodrow House is split into six different living units, five single occupancy apartments and a four bed unit with communal living areas. Each of the units have their own lounge, dining room, kitchen and bathroom facilities and the shared unit has a well-equipped activity room and computer suite. Externally there is a large garden that all residents have access to. The garden has plenty of space for outdoor activities including sports, games and socialising at summer BBQs and garden festivals.

Located in a great location in the suburbs of Heaton Moor in Stockport, Woodrow House is close to many community facilities. The residents are encouraged to be involved in the local community, there is no shortage of community integration. Major public transport links are on the doorstep with Stockport and Manchester being within easy reach. As part of our care pathway, Woodrow House enables each individual to build upon their skills to achieve further independence, self-advocacy and confidence, leading to a better quality of life.

Our team supports individuals in creating person-centred activity planners and developing daily living skills both inside the home and out in the community. The integrated multi-disciplinary team (MDT) consists of occupational therapy, speech and language therapy, psychology and psychiatry.

Our community links:

- > Reddish Vale Country Park
- > Heaton Moor Park
- > Local pubs and restaurants
- > Cinema, library and other leisure activities
- > Great public transport links



In-house multi-disciplinary team (MDT) including psychology, speech and language therapy and occupational therapy

Residents are supported with in-house therapeutic earnings

Rated **'Outstanding'** by the CQC

Ensuring meaningful involvement by working inclusively, collaboratively and in genuine partnership



Click the buttons to find out more about our South West and South Wales Services

Introduction

Our Model of Support – Residential Services

Residential Services

Broughton Lodge, Cheshire

Glyn House, Staffordshire

Lowry House, Lancashire

Morgan House, Staffordshire

1 Vincent Court, Blackburn

Woodrow House, Cheshire

Supported Living Services

Case Study

Map

How to Make a Referral





Supported Living in Macclesfield

Registered Address: North West Supported Living, Railway House, Suite 21, Railway Road, Chorley, PR6 0HW

Supported Living



18+ years



Mixed Gender



9 tenancies

We know how important it is for individuals to have the right support so they can live the life they want to live. We support individuals with learning disabilities, autism, mental health needs and behaviours that challenge.

Supported Living in Macclesfield, consists of nine single occupancy flats and individuals are supported to hold their own tenancy agreement with a registered housing association. Individuals who are interested in living here may have previously been detained within a hospital setting and are ready for a step-down placement within their local community and a chance to live more independently.

Macclesfield boasts a wide array of local amenities. From historic landmarks such as the Macclesfield Silk Museum, to the tranquil grounds of West Park. The town also has excellent leisure facilities, including swimming pools, gyms, and sports clubs catering to a wide range of interests and abilities.



Providing person-centred practical help for individuals - such as training and support on how to manage their home, their money, gardening, housework and healthy living

Helping individuals to set goals as part of their support plan



Working with individuals to help them achieve their goals



Click the buttons to find out more about our South West and South Wales Services

Introduction

Our Model of Support – Residential Services

Residential Services

Supported Living Services

Supported Living in Macclesfield

Supported Living in Preston

Supported Living in Warrington

Supported Living in Wigan Central

Supported Living in Wigan South

Case Study

Map

How to Make a Referral

“I have lived at different facilities but this is the first place I truly call home. I have not had a mental health or drug relapse since moving to my own home thanks to Cygnet and the staff team have really supported me. The staff really care for you and at the same time help you live independently. I am feeling really positive about my future now thanks to the team here.”
Resident in Supported Living





Supported Living in Preston

Registered Address: North West Supported Living, Railway House, Suite 21, Railway Road, Chorley, PR6 0HW

Supported Living



18+ years



Mixed Gender



1 tenancies

Supported Living in Preston provides one tenancy, a single occupancy house with its own garden and good transport links to community facilities. The service is focused on empowering an individual with complex mental health needs, learning disabilities, autism, and challenging behaviours to live more independently. The service offers personalised, tailored support in a private space, allowing the person we support to hold their own tenancy with a registered housing association.

Individuals who are interested in living here may have previously been detained within a hospital setting and are ready for a step-down placement within their local community.

Nestled in Lancashire, northwest England, Preston offers a blend of historical landmarks, vibrant culture, and scenic beauty. The city features the iconic Harris Museum & Art Gallery, alongside the picturesque Avenham Park. There are an array of pleasant walking and cycling paths that run through Avenham and Miller Parks, beside the River Ribble.

Offering experienced, trained staff twenty-four hours a day, the service benefits from a shared core staffing team.

Each tenant is allocated an experienced and consistent staff team and training is bespoke to individual support needs which enables tenants to live as independently and safely as possible.



Helping people to **build relationships and access whatever community activities they would like to take part in**



Working with individuals to **find out their strengths, abilities and preferences**

Providing person centred practical help for individuals - such as training and support on how to manage their home, their money, gardening, housework and healthy living.



Working with individuals to **help them achieve their goals**



Click the buttons to find out more about our South West and South Wales Services

Introduction

Our Model of Support – Residential Services

Residential Services

Supported Living Services

Supported Living in Macclesfield

Supported Living in Preston

Supported Living in Warrington

Supported Living in Wigan Central

Supported Living in Wigan South

Case Study

Map

How to Make a Referral





Supported Living in Warrington

Registered Address: North West Supported Living, Railway House, Suite 21, Railway Road, Chorley, PR6 0HW

Supported Living



18+ years



Mixed Gender



1 tenancies

The service is a single occupancy house with its own garden and good transport links to community facilities. Offering experienced, trained staff twenty-four hours a day, the service benefits from a shared core staffing team. It is also envisaged that initially tenants will require additional 2:1 staffing of at least 49 hours a week. Each tenant would be allocated an experienced and consistent staff team and training is bespoke to individual support needs which enables tenants to live as independently and safely as possible.

We support individuals with learning disabilities, autism, mental health needs and behaviours that challenge. Individuals are supported to hold their own tenancy agreement with a registered housing association. Individuals who are interested in living here may have previously been detained within a hospital setting and are ready for a step-down placement within their local community.

Warrington is a thriving town in Cheshire, located between Manchester and Liverpool. It has a strong sense of community and offers a variety of amenities. The town is well-connected, with excellent transport links via road, rail, and bus. Warrington has a wide range of parks and green spaces, such as Walton Hall Gardens and Victoria Park. The town is home to several community hubs, leisure centres, and support groups.



We get to know the residents, their families, carers advocates and other people who are important to them and their care and support

Providing person-centred practical help for individuals - such as training and support on how to manage their home, their money, gardening, housework and healthy living

Helping individuals to set goals as part of their support plan



Click the buttons to find out more about our South West and South Wales Services

Introduction

Our Model of Support – Residential Services

Residential Services

Supported Living Services

Supported Living in Macclesfield

Supported Living in Preston

Supported Living in Warrington

Supported Living in Wigan Central

Supported Living in Wigan South

Case Study

Map

How to Make a Referral





Supported Living in Wigan Central

Registered Address: North West Supported Living, Railway House, Suite 21, Railway Road, Chorley, PR6 0HW

Supported Living



18+ years



Mixed Gender



3 tenancies

We know how important it is for individuals to have the right support so they can live the life they want to live. We support individuals with learning disabilities, autism, mental health needs and behaviours that challenge.

Supported Living in Macclesfield, consists of nine single occupancy flats and individuals are supported to hold their own tenancy agreement with a registered housing association. Individuals who are interested in living here may have previously been detained within a hospital setting and are ready for a step-down placement within their local community and a chance to live more independently.


Macclesfield boasts a wide array of local amenities. From historic landmarks such as the Macclesfield Silk Museum, to the tranquil grounds of West Park. The town also has excellent leisure facilities, including swimming pools, gyms, and sports clubs catering to a wide range of interests and abilities.



Helping people to **build relationships and access whatever community activities they would like to take part in**



Working with individuals to find out their strengths, abilities and preferences



We get to know the residents, their families, carers advocates and other people who are important to them and their care and support




i Click the buttons to find out more about our South West and South Wales Services

- Introduction
- Our Model of Support – Residential Services
- Residential Services
- Supported Living Services**
- Supported Living in Macclesfield
- Supported Living in Preston
- Supported Living in Warrington
- Supported Living in Wigan Central
- Supported Living in Wigan South
- Case Study
- Map
- How to Make a Referral





Supported Living in Wigan South

Registered Address: North West Supported Living, Railway House, Suite 21, Railway Road, Chorley, PR6 0HW

Supported Living



18+ years



Mixed Gender



1 tenancies

Supported Living in Wigan South provides one tenancy for an individual. The service is focused on empowering someone with complex mental health needs, learning disabilities, autism, and challenging behaviours to live more independently. The service offers personalised, tailored support in a private space, allowing the person we support to hold their own tenancy with a registered housing association.

Individuals who are interested in living here may have previously been detained within a hospital setting and are ready for a step-down placement within their local community. We know how important it is for individuals to have the right support so they can live the life they want to live.

The service is a single occupancy house with its own garden and good transport links to community facilities. Offering experienced, trained staff twenty-four hours a day, the service benefits from a shared core staffing team.

The tenant is allocated an experienced and consistent staff team and training is bespoke to individual support needs, which enables that person to live as independently and safely as possible.

Wigan offers a range of amenities and services and has good public transport links, connecting residents to nearby cities like Manchester and Liverpool. The area boasts a variety of green spaces, such as Haigh Woodland Park and the Wigan Flashes Nature Reserve.



"I have lived at different facilities but this is the first place I truly call home. I have not had a mental health or drug relapse since moving to my own home thanks to Cygnet and the staff team have really supported me. The staff really care for you and at the same time help you live independently. I am feeling really positive about my future now thanks to the team here."

Resident in Supported Living

Providing person-centred practical help for individuals - such as training and support on how to manage their home, their money, gardening, housework and healthy living



Helping individuals to set goals as part of their support plan



Click the buttons to find out more about our South West and South Wales Services

Introduction

Our Model of Support – Residential Services

Residential Services

Supported Living Services

Supported Living in Macclesfield

Supported Living in Preston

Supported Living in Warrington

Supported Living in Wigan Central

Supported Living in Wigan South

Case Study

Map

How to Make a Referral



Liam's* Journey

Broughton Lodge, Macclesfield

Specialist Residential Service for Adults with Autism and Learning Disabilities



Liam's history

Liam has a diagnosis of autism, a learning disability and behaviours that challenge. He lived in the family home until his father was no longer able to cope as his aggression and challenging behaviours were increasingly difficult to manage. The family felt that he needed more intensive support and after a community placement broke down, Liam was referred to a hospital.

During Liam's time in hospital he refused to engage with the staff, spent long periods of time in his room sleeping during the day and would not get dressed. Physical interventions and PRN medication had been used to manage Liam's high levels of aggression and behaviours.

When Liam came to us

It was felt that Liam would benefit from a move out from the hospital setting and so he transitioned to Broughton Lodge. Liam was anxious and unsettled by the move and required 2:1 support initially, this soon increased to 4:1 for periods of the day at times of challenging behaviours.

When staff tried to support Liam with his personal care, he became very upset as he did not like close contact. Liam was unable to access the community due to this, along with his high levels of anxiety.

Liam's care

The onsite clinical team reviewed Liam's medication and felt that he may be better suited to an alternative, this was discussed with his mum before being introduced and is still reviewed fortnightly. The medication supported a reduction in Liam's anxiety and, consequently, his challenging behaviour.

As Liam is non-verbal, the team worked closely with his parents to establish activities that he liked, anxiety triggers and routines that worked for him. Staff worked together on Liam's routine, the multi-disciplinary team (MDT), service manager and support staff meet weekly to discuss. They continue to do this as his needs continue to change and develop as he progresses.

The MDT at Broughton Lodge completed frequent observations in order to select interventions that could support Liam to progress. A 'now and next' picture board was introduced, which helped his understanding of the day ahead and subsequently reduced his anxieties. They also recognised that time between activities was key to keeping Liam calm, therefore they allowed downtime for him to return to baseline after tasks or activities.

Once Liam felt more settled at Broughton Lodge he was able to access more activities and community leave, the activity coordinator linked in with his senior support workers to arrange suitable activities in and out of the house such as sensory sessions, watching films and arts and crafts.

The team built up his community access in stages from short car rides until he was able to go for walks.

Liam began to accept support from the staff to complete his personal care and would get dressed in the morning. He built a positive relationship with the staff and incidents reduced significantly. They also worked with him on his eating habits, he had always eaten with his hands, and so staff purchased some adaptive equipment to help him with this.

Liam today

Liam has a great relationship with the staff, he loves to sit with them and enjoys trips out with them. He often has family visits where his mum is able to join them out in the community.

With the help of his positive behaviour support plan his incidents have more than halved in the short time he has been there. Liam now has good sleep hygiene and sleeps through the night, meaning he can access the activities he enjoys throughout the day.

Liam's next goals are to gain more community access and increase his independent living skills. The team are currently sourcing Liam his own vehicle to keep onsite to allow more regular trips out once he is ready.

Both the team and his family are proud of Liam's progress and are working towards his next goal of completing a home visit.



Click the buttons to find out more about our South West and South Wales Services

Introduction

Our Model of Support – Residential Services

Residential Services

Supported Living Services

Case Study

Map

How to Make a Referral

Family testimonial

I feel that Liam has progressed loads in a short time of being at Broughton Lodge. His challenging behaviours have calmed, even when out in the community sitting in traffic, it used to be a major issue but now he sits patiently.

Encouraging Liam to eat with a spoon and a fork instead of his fingers is a massive achievement for him. Even watching Liam take his dishes and put them in the dishwasher, I am so incredibly proud, I know he has a long way to go but he will get there.

I can honestly see a massive improvement in him every time I visit him at Broughton Lodge. I can see and feel the team are dedicated and it puts my mind at rest. The kind helping staff supporting Liam with his every day needs is a blessing to watch, I have to hold back my tears I am so proud of him and, of course, I can't thank the team enough.



*Name has been changed to protect his identity

Map | Our specialist services by region

Residential Services

- 1 Broughton Lodge, Cheshire**
London Road, Oak Grove,
Macclesfield, SK11 0JG
T: **01625 468 951**
- 2 Glyn House, Staffordshire**
78 Uttoxeter Road,
Blythe Bridge, Stoke-on-Trent,
Staffordshire, ST11 9JG
T: **01782 389 161**
- 3 Lowry House, Lancashire**
Pudding Lane, via Viner Way,
Godley, Hyde,
Manchester, SK14 3BS
T: **0161 6961690**
- 4 Morgan House, Staffordshire**
86 Uttoxeter Road,
Blythe Bridge, Stoke-on-Trent,
Staffordshire, ST11 9JG
T: **01782 390640**
- 5 1 Vincent Court, Blackburn**
1 Vincent Court, Blackburn,
Lancashire, North West BB2 4LD
T: **01254 699 678**
- 6 Woodrow House, Cheshire**
1 Brownsville Road, Stockport,
Cheshire, SK4 4PE
T: **0161 470 9910**

Supported Living Services

- 7 Supported Living in Macclesfield**
Registered Address: North West
Supported Living, Railway House,
Suite 21, Railway Road,
Chorley, PR6 0HW
T: **01625 468 951**
- 8 Supported Living in Preston**
Registered Address: North West
Supported Living, Railway House,
Suite 21, Railway Road,
Chorley, PR6 0HW
T: **01625 468 951**
- 9 Supported Living in Warrington**
Registered Address: North West
Supported Living, Railway House,
Suite 21, Railway Road,
Chorley, PR6 0HW
T: **01625 468 951**
- 10 Supported Living in Wigan Central**
Registered Address: North West
Supported Living, Railway House,
Suite 21, Railway Road,
Chorley, PR6 0HW
T: **01625 468 951**
- 11 Supported Living in Wigan South**
Registered Address: North West
Supported Living, Railway House,
Suite 21, Railway Road,
Chorley, PR6 0HW
T: **01625 468 951**



Click the buttons to find out more about our South West and South Wales Services

[Introduction](#)

[Our Model of Support – Residential Services](#)

[Residential Services](#)

[Supported Living Services](#)

[Case Study](#)

[Map](#)

[How to Make a Referral](#)



How to Make a Referral

For more information or to make a referral, please contact your regional Business Relationship Manager or email: sc.referrals@cygnethealth.co.uk

- 1 Referral made to Cygnet Social Care and a desktop assessment is undertaken to review suitability for placement
- 2 If a suitable placement is identified, an assessment is arranged and undertaken by our specialist team
- 3 Feedback is provided on whether our service can meet the individual's needs
- 4 Detailed placement proposal is formulated to include care plans and funding information
- 5 Once placement is confirmed, transition plans are developed with all relevant stakeholders and admission date is agreed



Social Care Referrals



Click the buttons to find out more about our South West and South Wales Services

[Introduction](#)

[Our Model of Support – Residential Services](#)

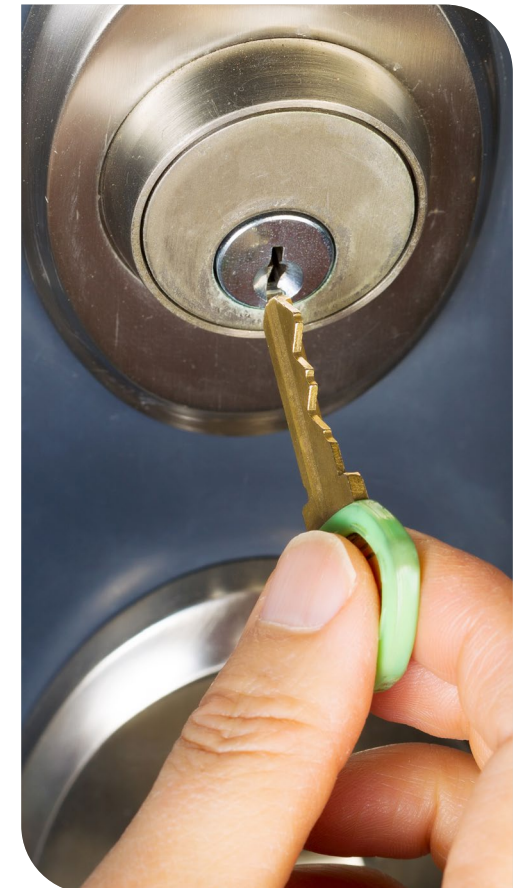
[Residential Services](#)

[Supported Living Services](#)

[Case Study](#)

[Map](#)

[How to Make a Referral](#)





Improving lives together

 **Cygnet**

4 Millbank, 3rd Floor,
Westminster, London
SW1P 3JA

 **0207 123 5706**

www.cygnetgroup.com

Follow us on social media:

CYG-1955 | Date of Preparation: 31/03/26

Integrity

Trust

Empower

Respect

Care