

Improving lives together

Specialist Social Care Services in the East of England

Supporting People with Learning Disabilities,
Autism and Complex Needs



Welcome

Cygnet was established in 1988. Since then, we have developed a wide range of health and social care services for individuals with mental health needs, autism and learning disabilities within the UK.

Through our values of Integrity, Trust, Empower, Respect and Care we take pride in the services we offer and the outcomes we enable individuals in our care to achieve.



We provide services in England, Scotland and Wales and our expert and highly dedicated care team of almost **13,000 employees** help more than **8,300 individuals** each year across **150 services** to consistently make a positive difference to their lives.



We maintain a good relationship with our quality regulators and undergo regular inspections, with **81% of our services rated 'Good' or 'Outstanding'**.



Click the buttons to find out more about our Specialist Social Care Services in the East of England

- Introduction
- Our Model of Support - Residential Services
- Staff Training
- Residential Services with Nursing Residential Services
- Case Study
- Map
- How to Make a Referral

Contents

Introduction	03
Our Model of Support - Residential Services	04
Staff Training	05
Residential Services with Nursing	
Old Leigh House, Essex	06
Residential Services	
Ducks Halt, Essex	07
Gables, Essex	08
Hansa Lodge, Essex	09
The Orchards, Essex	10
Chaseways, Hertfordshire	11
Shear Meadow, Hertfordshire	12
Walkern Lodge, Hertfordshire	13
Fairways, Ipswich	14
Case Study	15
Map	16
How to Make a Referral	17



Introduction

Our priority is to ensure that people with learning disabilities enjoy the same right to a happy and fulfilled life as others. We ensure that people in our care feel safe in their environment, are understood and are able to communicate to the best of their ability. Most importantly, with the right support and help, we empower each individual in our care to successfully progress to a community-based service that is suitable for their needs.

Our services throughout the East of England have considerable experience and expertise in supporting individuals with learning disability, autism and complex needs to develop independent skills and to live an active and happy life.

The people we support:

- > Adults from the age of 17/18+ years
- > Individuals with a primary diagnosis of learning disability accompanied with behaviours that challenge, including mental illness or a forensic background
- > Individuals with a secondary diagnosis of autism, personality disorder or dementia
- > May have communication challenges
- > May have associated complex needs



17 + / 18+
years



Mixed
Gender



Mental Health Act
Status: Informal



Click the buttons to find out more about our Specialist Social Care Services in the East of England

Introduction

[Our Model of Support - Residential Services](#)

[Staff Training](#)

[Residential Services with Nursing](#)

[Residential Services](#)

[Case Study](#)

[Map](#)

[How to Make a Referral](#)



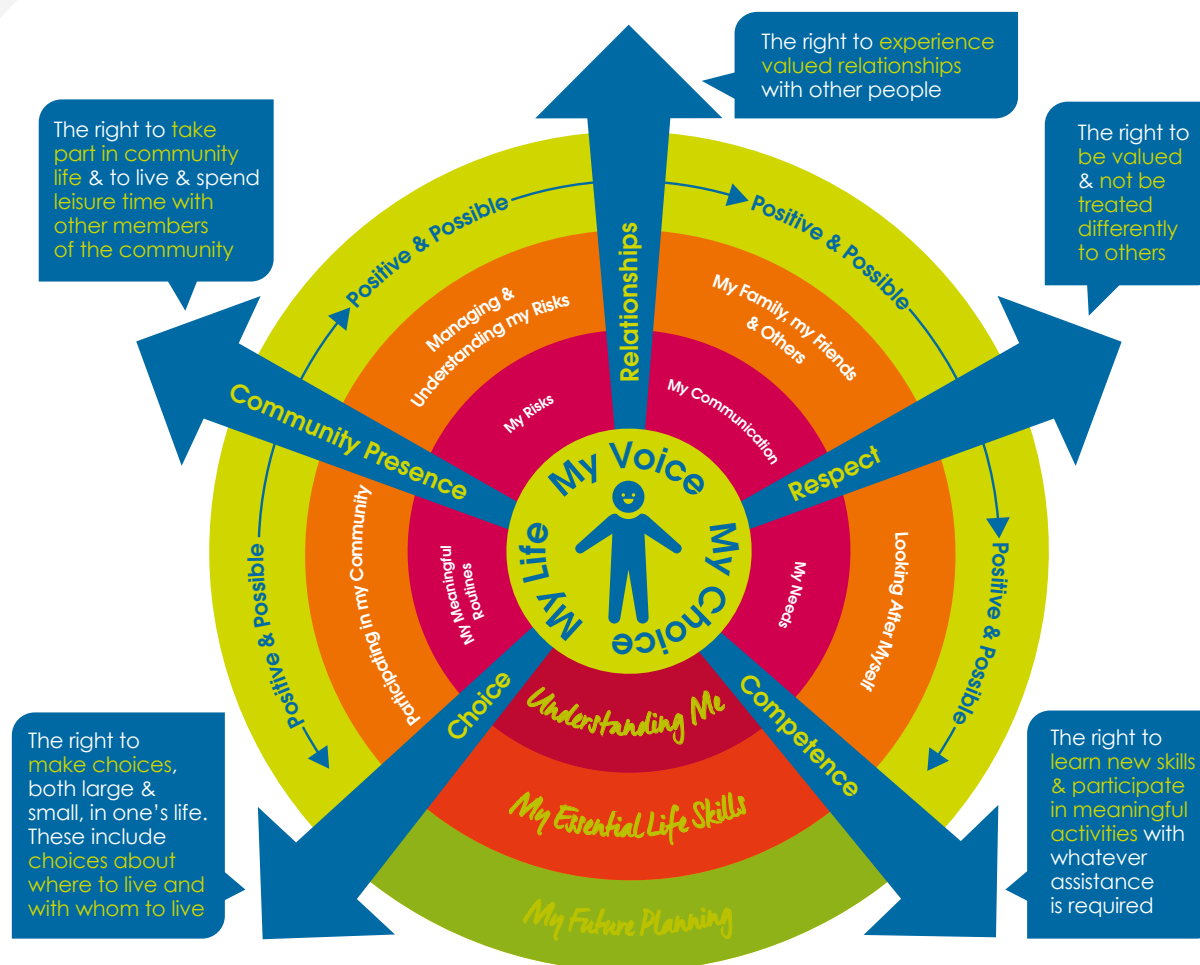
Our Model of Support - Residential Services

At Cygnet Social Care, we believe that each individual with a learning disability has the right to a happy and fulfilled life, regardless of their level of support. To help guide us and make sure we are all working together to achieve this, we have formed **Our Model of Support for our Residential Services**. A guide that shows what we do as an organisation to support individuals with learning disabilities.



Click the buttons to find out more about our Specialist Social Care Services in the East of England

- Introduction
- Our Model of Support - Residential Services**
- Staff Training
- Residential Services with Nursing
- Residential Services
- Case Study
- Map
- How to Make a Referral



Staff Training

At Cygnet Social Care, we believe that exceptional care starts with a commitment to continuous learning and professional development. Our social care teams across the East of England receive comprehensive, specialist training to ensure they are equipped with the knowledge and skills necessary to provide the highest standard of support throughout our residential services.

We are proud to highlight some of the key training modules our staff complete:

- > All our staff take part in a rigorous enhanced training programme that establishes a foundation of core competencies to ensure safety and professionalism in all aspects of residential care. This includes critical modules such as **Basic Life Support (BLS)** and **Emergency First Aid**, which prepare our team to respond effectively to any medical situation within the home environment. Furthermore, all staff are trained in **Safeguarding Individuals at Risk and Infection Prevention and Control** to protect the health and wellbeing of everyone who lives in or visits our homes. Our team is also highly knowledgeable in the **Mental Health Act** and skilled in **Medication Management**, ensuring that all support is delivered with the utmost accuracy and legal compliance, contributing to a safe, secure and caring home.
- > Building on this strong foundation, our training extends to specialised care, reflecting our dedication to providing person-centred care in every aspect of daily life. All staff receive advanced training, including **The Oliver McGowan Mandatory Training on Learning Disability and Autism (Tier 1)**, enabling them to provide tailored support that respects individual needs and preferences within the comfort of their home. This expertise is crucial for our highly specialist autism and learning disability services, where our teams are equipped to manage complex and challenging needs with skill and empathy. We also focus on **PICA Awareness**, **Positive Behaviour Support Awareness**, and **MCA / DOLS** in principle and in practice, ensuring a comprehensive and safe approach to care.

- > Finally, through the **Patient Safety Incident Response Framework (PSIRF)**, we follow a structured approach to continuously improve safety and quality of care, reinforcing our commitment to making our homes a place where the people we support can truly thrive and feel secure.

This comprehensive training scheme is just one way we demonstrate our dedication to providing safe, compassionate, and high-quality residential care.

36 mandatory enhanced training modules delivered throughout the East of England



Because trained staff allows for:

Increased independence



Greater confidence and wellbeing



Safe and secure thriving home



Click the buttons to find out more about our Specialist Social Care Services in the East of England

Introduction

Our Model of Support - Residential Services

Staff Training

Residential Services with Nursing

Residential Services

Case Study

Map

How to Make a Referral





Old Leigh House, Essex

3 Old Leigh Road, Leigh-on-Sea, Essex SS9 1LB

Residential Services with Nursing

Specialism: Learning Disabilities and Autism

18+ years

Male

6 placements

[Click here to visit our website](#)

Old Leigh House supports men living with a learning disability and complex needs. The team can also support those who have mental and physical health needs, as well as behaviours that may challenge and a history of offending.

Old Leigh House is a spacious semi-detached house, offering pleasant views overlooking a park. The service provides a choice of lounges and communal areas for the people we support to enjoy, along with a small garden at the back of the house. This home has been specially adapted, including an accessibility lift, to ensure full support for individuals with mobility needs.

The people we support can enjoy a wide range of activities at the seaside towns nearby, with many coastal walks to enjoy, as well as some lovely beaches. They can also visit the shops or take part in local activities, such as bowling, going to the theatre, visiting the zoo, go-karting or going to the cinema. The service also benefits from being within easy access to two main train lines into London.

Old Leigh House has a dedicated occupational therapist and activity coordinator who help the people we support to have individual activity plans, created based on their likes and hobbies. Their goal is to enable people to structure their time, build relationships and establish a balance between therapy, self-care, work and leisure, as appropriate to their individual needs.

Individuals come to Old Leigh House for different reasons; they may require more support than can be provided in a supported living setting or they may be moving along their care pathway from a hospital placement. Whatever the reason, the team at Old Leigh House can offer specialist input based on individual need to deliver flexible and effective support.

Our community links:

- > Excellent transport links to London
- > Shops
- > Colleges
- > Theatre
- > Bowling
- > Coastal walks and beaches



In-house Multidisciplinary Team consisting of Nurses, Occupational Therapy, Speech and Language Therapy

Supporting individuals to build friendship groups in the local community

Easy read and other accessible information available to all

Supporting home visits

Weekly home meetings attended by the advocate

Person-centred meal planning, including shopping and cooking

10 min walk to local beach

Achieved the Dignity in Care Award

Rated 'Good' with the CQC

i **Click the buttons to find out more about our Specialist Social Care Services in the East of England**

- Introduction
- Our Model of Support - Residential Services
- Staff Training
- Residential Services with Nursing**
- Old Leigh House, Essex
- Residential Services
- Case Study
- Map
- How to Make a Referral





Ducks Halt, Essex

8 Walton Road, Kirby-le-Soken, Essex CO13 0DU

Residential Services

Specialism: Learning Disabilities and Autism



18+ years



Mixed gender



5 placements



Click here to visit our website

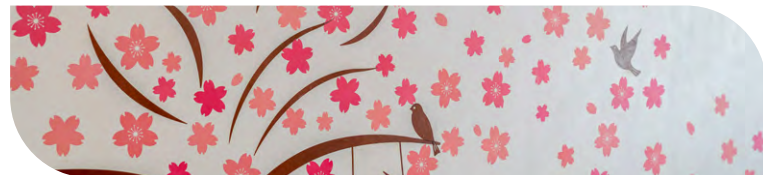
Based in the picturesque village of Kirby-le-Soken, Essex, Ducks Halt supports adults who are living with learning disabilities and complex needs, including those who have additional mental and physical health needs, and behaviours that may challenge.

At Ducks Halt, each person we support is unique; they have their own goals, needs and interests. We work with each individual to ensure that their life is filled with activities that they enjoy, whilst also supporting them to develop their life skills to enable them to live independently. We encourage and enable the individuals we support to lead a full and happy life.

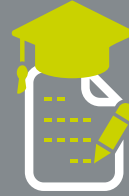
Ducks Halt is a detached bungalow in a beautiful small village in Essex, which has a couple of pubs along with a village shop and post office. Just two miles away is Walton-on-the-Naze where the residents regularly visit and make the most of the facilities in a typical seaside town. Nearby, there are plenty of community facilities for individuals to access, including shops, colleges, a swimming pool and local parks. Ducks Halt has two vehicles for the staff to take the residents out on day trips. Clacton and Colchester are a short journey away, providing an extensive array of activities and places to visit.

Ducks Halt is homely and we support individuals to personalise and decorate their room as they would like it to be. The service has relaxing living areas and a kitchen to prepare drinks, food and snacks for themselves or their visitors. There is a large garden with a seating area and space for gardening and other outdoor interests, including hosting parties.

We understand that the relationships the people we support have with their family and friends are very important and integral to their wellbeing. Therefore, we ensure that we enable the individual to stay in touch with loved ones and can facilitate home visits.



We support individuals to attend Adult Learning College for various life skills courses



Supporting Individuals to step-down along their pathway to supported living



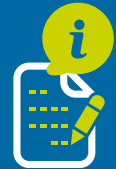
Homely environment with 24/7 support



Two service vehicles to support outings and independence



Easy read and other accessible information available for all



Promote family involvement and facilitate home visits



Excellent location with easy access to local towns and beaches



Rated 'Good' with the CQC



Our community links:

- > Beaches including the pier and funfair
- > Restaurants and cafés
- > Leisure centres
- > Local spa
- > Colchester zoo
- > Bowling
- > Shopping centres
- > Excellent transport links



Click the buttons to find out more about our Specialist Social Care Services in the East of England

Introduction

Our Model of Support - Residential Services

Staff Training

Residential Services with Nursing

Residential Services

Ducks Halt, Essex

Gables, Essex

Hansa Lodge, Essex

The Orchards, Essex

Chaseways, Herfordshire

Shear Meadow, Herfordshire

Walkern Lodge, Herfordshire

Fairways, Ipswich

Case Study

Map

How to Make a Referral





Gables, Essex

262 Ipswich Road, Colchester, Essex CO4 0ER

Residential Services

Specialism: Learning Disabilities and Autism



18+ years



Mixed gender



7 placements



Click here to visit our website

Located in the heart of a residential community in Colchester, Gables is a specialist residential service supporting people with learning disabilities and associated complex needs who may have behaviours that challenge. The home provides longer term placements for those who require round-the-clock care and support. Person-centred planning is at the heart of everything we do.

Gables features seven en-suite bedrooms that individuals are encouraged to personalise to their own tastes. Communal spaces include an open-plan lounge, a bright dining room, and an Activities of Daily Living (ADL) skills kitchen to support skill development. Outside, a large garden with seating areas provides the people we support with a space to relax.

The team at Gables are focused on ensuring that individuals are part of their local community and can access various opportunities to meet their needs. We understand that consistency and continuity of care is important for the individuals we care for.

The home is situated in Colchester, which is Britain's oldest recorded town. Colchester is now a thriving, modern city with many great attractions, including Colchester Zoo and Colchester Castle Museum. Nearby, there are excellent shopping facilities and many amenities for residents. The coast is a short drive away and London is accessible by regular rail links with journeys taking under an hour.



Our community links:

- Wilson Marriage College
- Colchester United Football Club
- Voluntary work centres
- Horticultural community programmes
- Places of leisure and entertainment
- Charity partnerships and fundraising initiatives
- Community environment projects and social outings
- Local shops, libraries and cinemas

Regular co-produced 'empowerment meetings' for the people we support



Rated 'Good' with the CQC



Supporting individuals to access education



Supporting individuals to have annual holidays



Large garden with outdoor activities



Independent advocate



Dedicated sensory room



Click the buttons to find out more about our Specialist Social Care Services in the East of England

Introduction

Our Model of Support - Residential Services

Staff Training

Residential Services with Nursing

Residential Services

Ducks Halt, Essex

Gables, Essex

Hansa Lodge, Essex

The Orchards, Essex

Chaseways, Herfordshire

Shear Meadow, Herfordshire

Walkern Lodge, Herfordshire

Fairways, Ipswich

Case Study

Map

How to Make a Referral





Hansa Lodge, Essex

58 Farm Road, Rainham, Essex RM13 9LG

Residential Services

Specialism: Learning Disabilities and Autism



18+ years



Female



5 placements



Click here to visit our website

Located in Rainham in Essex, Hansa Lodge is a five bedroom residential service for adults with learning disabilities, who may have a personality disorder, behaviours that challenge and associated complex needs.

Each individual we support is unique; they have their own goals, needs and interests. We work with each person to ensure that their life is filled with activities that they enjoy, whilst also supporting them to develop their life skills to enable them to step-down along their care pathway into supported living.

Hansa Lodge is a spacious and homely detached property on a residential street within walking distance of local amenities. There is also good public transport links close by with Rainham train station just a short drive away.

Within the service, there are five en-suite bedrooms, two lounges, a dining room, kitchen (with a separate laundry) and a spacious activity room. Externally, there is a large garden with plenty of space for outside games and activities, as well as a place for individuals to grow their own plants and vegetables.

Our team supports individuals in creating person-centred activity planners and developing daily living skills, both inside the home and out in the community. Our staff use least restrictive practice approaches and are trained in specialised intervention techniques and sensory integration strategies.

We offer a wide variety of activities for individuals to choose from, including, community outings, 1:1 activities, regular bingo sessions and any excuse for a themed party in the service.

We understand that the relationships people we support have with their family and friends are very important and integral to their well-being. Therefore, we ensure that we enable the individual to stay in touch with loved ones and can facilitate home visits.

Games of bingo enjoyed regularly by everyone we support



Wide range of activities chosen by the people we support



Easy read and other accessible information available for every individual



Person-centred meal planning with independent cooking skills and healthy eating



Supporting individuals to step-down along their pathway to supported living



Regular celebrations - any excuse for a party



Excellent location with easy access to local towns and beaches



Supporting individuals on holidays and day trips



Our facilities:

- > Quiet room
- > Lounges
- > Dining room
- > Kitchen
- > Large garden
- > Activity room



Click the buttons to find out more about our Specialist Social Care Services in the East of England

Introduction
Our Model of Support - Residential Services
Staff Training
Residential Services with Nursing
Residential Services
Ducks Halt, Essex
Gables, Essex
Hansa Lodge, Essex
The Orchards, Essex
Chaseways, Herfordshire
Shear Meadow, Herfordshire
Walkern Lodge, Herfordshire
Fairways, Ipswich
Case Study
Map
How to Make a Referral





The Orchards, Essex

Station Road, Thorrington, Essex CO7 8JA

Residential Services

Specialism: Learning Disabilities and Autism



18+ years



Male



5 placements



Click here to visit our website

Based in Thorrington, Essex, The Orchards supports men with a learning disability, and those who have complex needs and behaviours.

At The Orchards, each individual we support is unique; they have their own goals, needs, and interests. We work with each person to ensure that their life is filled with activities they enjoy, whilst also helping them to develop their life skills to enable them to live independently. The Orchards have a great track record in enabling individuals to step down along their care pathway into supported living.

The Orchards is a detached property on a quiet residential street in Thorrington, a small village in Essex, which has a pub and a café along with a village shop and post office. Just two miles away is Brightlingsea, where the residents regularly visit and make the most of the facilities in a typical seaside town. Nearby, there are plenty of community facilities for individuals to access, including shops, colleges, a swimming pool and a local park in a pretty waterside setting. Clacton and Colchester are a short journey away, providing an extensive array of activities and places to visit.

Each individual has their own bedroom, which they are encouraged to personalise and decorate to show their individuality. The Orchards has a large living space and well equipped kitchen-dining area for residents to use. The kitchen diner is the hub of the house where residents are encouraged to help prepare food and drinks for themselves and visitors. Developing self-care and daily living skills is a very important part of life at The Orchards.

Externally, there is a large, well-maintained garden, where individuals participate in gardening and enjoy growing their own vegetables. The garden has a seating area for relaxing or hosting barbecues and an outdoor gym. The outside area at The Orchards also boasts an activities centre, where residents can take part in an array of activities, including weekly clay sessions with a specialist tutor.

Promote family involvement and facilitate home visits regularly



Well equipped outdoor gym located in the garden



Regular themed days — celebrated by decorating the service and having parties



Homely environment with 24/7 support



Access to a private swimming pool for the people we support each week



Individuals are supported to go on holidays and day trips of their choice



Click the buttons to find out more about our Specialist Social Care Services in the East of England

Introduction

Our Model of Support - Residential Services

Staff Training

Residential Services with Nursing

Residential Services

Ducks Halt, Essex

Gables, Essex

Hansa Lodge, Essex

The Orchards, Essex

Chaseways, Herfordshire

Shear Meadow, Herfordshire

Walkern Lodge, Herfordshire

Fairways, Ipswich

Case Study

Map

How to Make a Referral





Chaseways, Hertfordshire

1 Chaseways, Sawbridgeworth, Hertfordshire CM21 0AS

Residential Services

Specialism: Learning Disabilities and Autism



18+ years



Mixed gender



6 placements (3 two-bedroom flats)



Click here to visit our website

Located close to the town of Sawbridgeworth, Chaseways is a residential service providing outcome focused care for adults with moderate / severe learning disabilities, who may have associated complex needs.

Person-centred planning is at the heart of everything we do and we are able to meet the changing needs of people as they progress through their care pathway, while ensuring their safety is maintained and their independence supported.

Chaseways is a six bed home consisting of three two-bed flats. Each flat has a kitchen, laundry facilities and garden for the two individuals to share, as well as their own separate lounges, bedrooms and en-suite bathrooms.

The home is within walking distance of local amenities, including colleges and work opportunities and is easily accessible by both road and rail, Harlow Mill Station is just over a mile away.

At Chaseways, we have experience in supporting people who have had multiple placement breakdowns. We work with people to ensure that their life is filled with things that they enjoy, whilst also supporting them to develop their life skills to enable them to live independently.

We understand that the relationships the people we support have with their family and friends are very important and integral to their wellbeing. Therefore, we ensure that we enable the individual to stay in touch with loved ones and help facilitate home visits.



Our community links:

- > Shopping centres
- > Cinemas
- > Restaurants, pubs and cafés
- > Local village amenities
- > Walks along the canal
- > Good public transport
- > Trampolining
- > Bowling
- > Wall climbing
- > Leisure centres

Ensuring meaningful involvement by working inclusively, collaboratively and in genuine partnership



Consistently **100%** of individuals achieve over 25 hours of activities each week



Person-centred meal planning including shopping and cooking



Independent advocate hosts monthly home meeting



Person-centred community activities including theme parks, wall climbing and trampolining



Click the buttons to find out more about our Specialist Social Care Services in the East of England

Introduction

Our Model of Support - Residential Services

Staff Training

Residential Services with Nursing

Residential Services

Ducks Halt, Essex

Gables, Essex

Hansa Lodge, Essex

The Orchards, Essex

Chaseways, Hertfordshire

Shear Meadow, Hertfordshire

Walkern Lodge, Hertfordshire

Fairways, Ipswich

Case Study

Map

How to Make a Referral





Shear Meadow, Hertfordshire

Bourne End, London Road, Hemel Hempstead, Hertfordshire HP1 2RJ

Residential Services

Specialism: Learning Disabilities and Autism



18+ years



Mixed gender



4 placements



Click here to visit our website

Shear Meadow is a community residential home providing outcome focused care for adults with learning disabilities, who may have behaviours that challenge and associated complex needs.

We encourage and enable the people we support to lead a full and happy life. We work with them to ensure they have more choice and control in their lives. We find out their strengths, abilities and preferences so that the care provided can be as person-centred and meaningful to each individual as possible.

Shear Meadow is a bright, modern and relaxing service that consists of four self-contained apartments. Each has its own lounge, kitchen and en-suite bedroom with a shower. In addition, the service also has a number of central communal areas where individuals can meet and spend time with others, including a large conservatory and a lounge with a communal television. Externally, we have a lovely garden where individuals are supported to grow their own plants and vegetables.

The home is on the outskirts of the town of Hemel Hempstead, and within walking distance of the village of Bourne End in Hertfordshire. There are pleasant walks along the Grand Union Canal, and Hemel Hempstead town centre offers a good selection of local shops and amenities. For local shops and pubs, Bourne End is only a few minutes walk away. Hemel Hempstead is easily accessible by both road and rail. The residents are encouraged to be involved in the local community as much or as little as they wish to be.

Individuals come to Shear Meadow for different reasons; they may require more support than can be provided in a supported living setting or they may be moving along their care pathway from a hospital placement. Whatever the reason, the team at Shear Meadow can offer specialist input based on individual needs, to deliver flexible and effective support.



Our community links:

- > Horse riding
- > Local gym and swimming pool
- > Local library & cultural centres
- > Local cafés & restaurants
- > High street shops
- > Great public transport links

Easy read and other accessible information available to all



Promoting family involvement where appropriate



Rated 'Good' with the CQC



Links with local community to support education, work placements and activities



The individuals we support are encouraged to cook and prepare their own lunches independently or with staff support



Monthly home meetings 'You Said, We Did'



Homely environment with 24 hour support



Regular family and friend parties



Click the buttons to find out more about our Specialist Social Care Services in the East of England

Introduction

Our Model of Support - Residential Services

Staff Training

Residential Services with Nursing

Residential Services

Ducks Halt, Essex

Gables, Essex

Hansa Lodge, Essex

The Orchards, Essex

Chaseways, Hertfordshire

Shear Meadow, Hertfordshire

Walkern Lodge, Hertfordshire

Fairways, Ipswich

Case Study

Map

How to Make a Referral





Walkern Lodge, Hertfordshire

14a Walkern Road, Stevenage, Hertfordshire SG1 3QX

Residential Services

Specialism: Learning Disabilities and Autism



18+ years



Mixed gender



4 placements



Click here to visit our website

Walkern Lodge is a residential home providing care for adults with learning disabilities, who may have behaviours that challenge and associated complex needs.

Walkern Lodge is a home with four placements. All bedrooms have en-suite bathrooms, and externally, there is a spacious communal garden which features a lovely summerhouse and plenty of space for summer BBQs.

Located in Stevenage in the county of Hertfordshire, Walkern Lodge is close to all local amenities, the town centre and surrounding countryside as well as having major transport links to London and Milton Keynes.

Through continuous assessment and staffing levels, typically with a minimum ratio of one staff member to two individuals, we are dedicated to adapting our support to the evolving needs of the people we support as they progress along their care journey. This commitment ensures their safety is always maintained and their independence is actively encouraged.

Regular review meetings involving the individual, their family, and professionals are held to review outcomes, set new goals, and reassess support levels as progress is made.

The management and staff team receive comprehensive mandatory training and any bespoke training, specific to the needs of the people we support.

Our community links:

- Local cafés, restaurants and pubs
- Fairlands Valley Park
- Gordon Craig Theatre
- Knebworth House
- Stevenage Arts and Leisure Centre
- Stevenage Museum
- Stevenage Football Club
- Local colleges & libraries



i Easy read and other accessible information is available

Supporting individuals to study and achieve qualifications

Independent advocate attends the service weekly

Wide range of indoor activities available including discos, cookery, dancing, arts and crafts and pottery

Homely environment with 24 hours support

Person-centred recruitment - staff and the people we support have their interests matched



Click the buttons to find out more about our Specialist Social Care Services in the East of England

- Introduction
- Our Model of Support - Residential Services
- Staff Training
- Residential Services with Nursing
- Residential Services**
- Ducks Halt, Essex
- Gables, Essex
- Hansa Lodge, Essex
- The Orchards, Essex
- Chaseways, Hertfordshire
- Shear Meadow, Hertfordshire
- Walkern Lodge, Hertfordshire
- Fairways, Ipswich
- Case Study
- Map
- How to Make a Referral





Fairways, Ipswich

4 Fullers Field, Swan Lane, Westerfield, Ipswich IP6 9AX

Residential Services

Specialism: Learning Disabilities and Autism



18+ years



Mixed gender



8 placements



Click here to visit our website

Located in a beautiful Suffolk village, Fairways is a specialist residential service supporting adults with learning disabilities and associated complex needs who may have behaviours that challenge. The home provides longer term placements for individuals who require round-the-clock care and support. Person-centred planning is at the heart of everything we do, based on each individual's specific need.

Fairways has eight en-suite bedrooms which the individuals we support are encouraged to personalise to their own tastes. There are communal spaces including living areas, a dining room and an Activities of Daily Living (ADL) skills kitchen to support skill development. Outside, there is large garden which has seating for individuals to relax and entertain family and friends with garden parties and BBQs.

The team at Fairways are focused on ensuring that each person we support is part of their local community and can access various opportunities to meet their needs. We understand that consistency and continuity of care is important for the individuals we care for.

The home is situated in the village of Westerfield, two miles from Ipswich, which is steeped in history and has many amenities and attractions. There is a great variety of shops with two modern shopping centres and a busy high street. Ipswich is a short drive from the local countryside and the quayside is a few minutes from the town centre, where an array of yachts and cruisers are moored.



Homely environment with 24 hours support

Rated **'Good'** with the CQC

Great relationship with local **village community**

Large garden suitable for family BBQs and parties

Easy read and other accessible information available to all people we support

Dedicated sensory room

Our community links:

- > Swimming & Leisure Centre
- > Local day centres
- > Community cafés
- > Local farms
- > Local pubs & restaurants
- > Libraries
- > Horse riding
- > Drumming therapy
- > Colchester Aqua Springs – for spa and Jacuzzi
- > Bingo
- > New Skills Day Centre
- > Community Hubs



Click the buttons to find out more about our Specialist Social Care Services in the East of England

- Introduction
- Our Model of Support - Residential Services
- Staff Training
- Residential Services with Nursing
- Residential Services**
- Ducks Halt, Essex
- Gables, Essex
- Hansa Lodge, Essex
- The Orchards, Essex
- Chaseways, Herfordshire
- Shear Meadow, Herfordshire
- Walkern Lodge, Herfordshire
- Fairways, Ipswich
- Case Study
- Map
- How to Make a Referral





Harry's* Journey

Gables, Essex

Specialist Residential Service for Adults with Learning Disabilities



Click the buttons to find out more about our Specialist Social Care Services in the East of England

- Introduction
- Our Model of Support - Residential Services
- Staff Training
- Residential Services with Nursing
- Residential Services
- Case Study**
- Map
- How to Make a Referral

Harry's history

When Harry first arrived at Gables, he faced significant challenges in his daily life. He experienced high levels of anxiety around going out into the community, completing personal care tasks, and managing responsibilities like laundry.

Harry also struggled with obsessive concerns. He found social interactions with others difficult, and was hesitant to attend health appointments.

These challenges were compounded by frequent displays of behaviours of distress, which made it hard for him to engage fully in his environment or build connections with those around him.



When Harry came to us

When Harry moved to Gables, he was met with a team dedicated to understanding his needs and building a foundation of trust and support. Staff worked closely with Harry, taking time to establish a strong rapport and make him feel safe in his new surroundings.

This connection became the starting point for addressing his anxieties and the behaviours that were holding him back.

Through daily encouragement, one-to-one support, and verbal reassurance, the team helped Harry begin to feel more comfortable with tasks that had previously caused him anxiety, such as going out into the community, attending health appointments, and completing personal care tasks.

Harry's care

Harry's care plan was centred on a person-focused approach to reduce his anxieties. Staff provided consistent encouragement and practical guidance to help him take small, manageable steps toward overcoming his fears.



Regular medication reviews with the GP also played a key role in managing his health, ensuring he had the right support to address his challenges.

To help reduce Harry's challenging behaviour, staff implemented strategies focused on reassurance, structure, and positive reinforcement. Over time, his behaviours were managed effectively, and the frequency and intensity of incidents decreased significantly.

As his confidence grew, Harry began to engage in more social interactions, building connections with others at Gables. This was a significant milestone for someone who had struggled with communication and relationships in the past.



Harry today

Today, Harry has made remarkable progress. His anxiety around community activities, personal care, and health appointments has been greatly reduced, allowing him to participate more fully in his daily life.

He is now able to complete daily living tasks with minimal support.

Harry has also developed meaningful social connections with others, a reflection of his improved confidence and willingness to engage. His challenging behaviours are now at a low level, and he continues to grow his independence and self-esteem.

*Name has been changed to protect his identity

Map | Our specialist services by region

Residential Services with Nursing

- 1 Old Leigh House,**
3 Old Leigh Road, Leigh-on-Sea,
Essex SS9 1LB
T: 01702 711 111

Residential Services

- 2 Ducks Halt,**
8 Walton Road, Kirby-le-Soken,
Essex CO13 0DU
T: 01255 853930
- 3 Gables,**
262 Ipswich Road,
Colchester, Essex CO4 0ER
T: 01206 841515
- 4 Hansa Lodge,**
58 Farm Road,
Rainham, Essex RM13 9LG
T: 01708 557369
- 5 The Orchards,**
Station Road, Thorrington,
Essex CO7 8JA
T: 01206 250676
- 6 Chaseways,**
1 Chaseways, Sawbridgeworth,
Hertfordshire CM21 0AS
T: 01279 414 939
- 7 Shear Meadow,**
Bourne End, London Road,
Hemel Hempstead,
Hertfordshire HP1 2RJ
T: 01442 864 484
- 8 Walkern Lodge,**
14a Walkern Road, Stevenage,
Hertfordshire SG1 3QX
T: 01438 749301
- 9 Fairways,**
4 Fullers Field, Swan Lane,
Westerfield, Ipswich IP6 9AX
T: 01473 214 966



Click the buttons to find out more about our Specialist Social Care Services in the East of England

- Introduction
- Our Model of Support - Residential Services
- Staff Training
- Residential Services with Nursing
- Residential Services
- Case Study
- Map**
- How to Make a Referral

How to Make a Referral

For more information or to make a referral, please contact your regional Business Relationship Manager or email: sc.referrals@cygnethealth.co.uk

- 1 Referral made to Cygnet Social Care and a desktop assessment is undertaken to review suitability for placement
- 2 If a suitable placement is identified, an assessment is arranged and undertaken by our specialist team
- 3 Feedback is provided on whether our service can meet the individual's needs
- 4 Detailed placement proposal is formulated to include care plans and funding information
- 5 Once placement is confirmed, transition plans are developed with all relevant stakeholders and admission date is agreed



Social Care Referrals



Click the buttons to find out more about our Specialist Social Care Services in the East of England

- Introduction
- Our Model of Support - Residential Services
- Staff Training
- Residential Services with Nursing Residential Services
- Case Study
- Map
- How to Make a Referral**





Improving lives together

 **Cygnet**

4 Millbank, 3rd Floor,
Westminster, London
SW1P 3JA

 **0207 123 5706**

www.cygnetgroup.com

Follow us on social media:

CYG-1947 | Date of Preparation: 05/02/26

Integrity

Trust

Empower

Respect

Care