



# Your guide to **Clarion Ward** Cygnet Nield House

**Personality Disorder with or  
without Disordered Eating**

# Clarion Ward

Cheshire

**Registered address:** Cygnet Nield House,  
Barrows Green,  
Bradfield Road,  
Crewe,  
Cheshire,  
CW1 4QW

Clarion Ward is part of Cygnet Nield House. This is owned by Cygnet. Cygnet Nield House is in Cheshire.

The people we care for in Clarion Ward are:

- Female
- 18+





Up to 14 people can stay in Clarion Ward.

This service helps women with a step-by-step treatment plan. The plan helps you to understand your support and what will happen next.

We work together with you to plan your care. We will listen to your needs and what is important to you. We support you to make progress, feel better and have better quality of life.

## People we support



At Clarion Ward we care for and support women aged 18 and over who have been diagnosed with a personality disorder.

We support you if you are an informal patient or have been detained under the Mental Health Act.

You may or may not have a history of difficulties with food or patterns of eating.

You may have a low body weight.

You may have experience of:

- a history of hurting or harming yourself
- not looking after yourself
- using substances like alcohol or solvents
- needing support
- past treatments or medications not working well for you
- bad things happening to you in your life

## Therapies and Activities



Our staff are trained to help you develop and learn. We will focus your care on your need and wants.

Therapy can help you to understand your feelings, learn new ways to cope and recover from difficult experiences. You will be supported by trained staff and they will work with you at your own pace.



Some of the therapies may include:

- talking therapies - to deal with trauma and difficult experiences
- therapies that help you be kinder to yourself
- therapies that help you manage strong emotions
- therapies to help your mind and body process emotions



Your team will talk to you about what support is right for you.

## Our team



There are a range of people to help you during your stay at Clarion Ward:

- Psychology team
- Occupational Therapy team
- Registered Mental Health Nurses (RMN)
- Registered General Nurses (RGN)
- Dietitian
- Hospital Manager
- Support Workers
- Therapy Co-ordinator

## Our Model of Care

This Model of Care shows how we will support you during different stages of your recovery.

### Phase 1

#### **Pre-admission**

Preparing for your arrival to Clarion Ward.

### Phase 2

#### **Understanding me**

Getting to know your team and support group.

### Phase 3

#### **Stabilisation**

Helping you to feel safe and settled.

### Phase 4

#### **Active Treatment**

Engaging in treatment and rehabilitation, improving quality of life.

### Phase 5

#### **Preparing to move on**

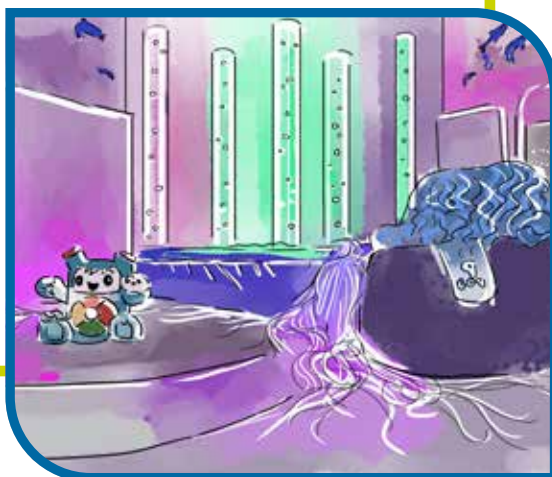
Moving on to a safe and meaningful future.



## Our facilities

We will try to make your stay with us as pleasant as possible. Some of the facilities available to you are:

- en-suite bedrooms
- dining room
- creative activities
- communal lounge
- garden
- sensory room





Address

Cygnets  
4 Millbank, 3rd Floor,  
Westminster,  
London,  
SW1P 3JA

Telephone

0207 123 5706

Website

[www.cygnetsgroup.com](http://www.cygnetsgroup.com)

CYG\_ER\_219 | Date of Preparation: 09/03/26



Accessible  
Information  
Standard