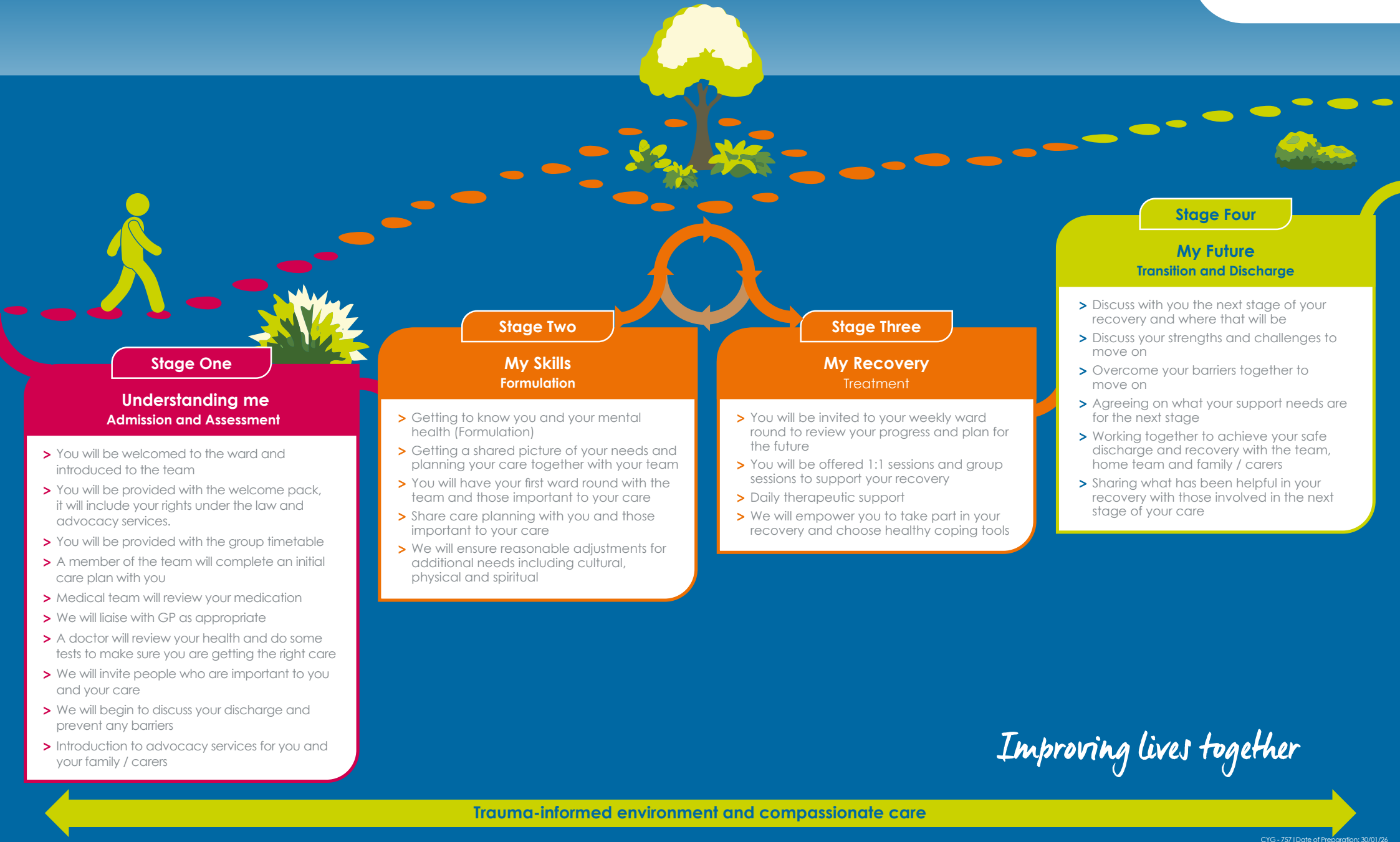


# Model of Care for our PICU/Acute Services



## Stage One

### Understanding me Admission and Assessment

- > You will be welcomed to the ward and introduced to the team
- > You will be provided with the welcome pack, it will include your rights under the law and advocacy services.
- > You will be provided with the group timetable
- > A member of the team will complete an initial care plan with you
- > Medical team will review your medication
- > We will liaise with GP as appropriate
- > A doctor will review your health and do some tests to make sure you are getting the right care
- > We will invite people who are important to you and your care
- > We will begin to discuss your discharge and prevent any barriers
- > Introduction to advocacy services for you and your family / carers

## Stage Two

### My Skills Formulation

- > Getting to know you and your mental health (Formulation)
- > Getting a shared picture of your needs and planning your care together with your team
- > You will have your first ward round with the team and those important to your care
- > Share care planning with you and those important to your care
- > We will ensure reasonable adjustments for additional needs including cultural, physical and spiritual

## Stage Three

### My Recovery Treatment

- > You will be invited to your weekly ward round to review your progress and plan for the future
- > You will be offered 1:1 sessions and group sessions to support your recovery
- > Daily therapeutic support
- > We will empower you to take part in your recovery and choose healthy coping tools

## Stage Four

### My Future Transition and Discharge

- > Discuss with you the next stage of your recovery and where that will be
- > Discuss your strengths and challenges to move on
- > Overcome your barriers together to move on
- > Agreeing on what your support needs are for the next stage
- > Working together to achieve your safe discharge and recovery with the team, home team and family / carers
- > Sharing what has been helpful in your recovery with those involved in the next stage of your care

*Improving lives together*

Trauma-informed environment and compassionate care

Integrity

Trust

Empower

Respect

Care