

Bespoke  
Care Plans

Customised  
Environments

Specialist  
Support



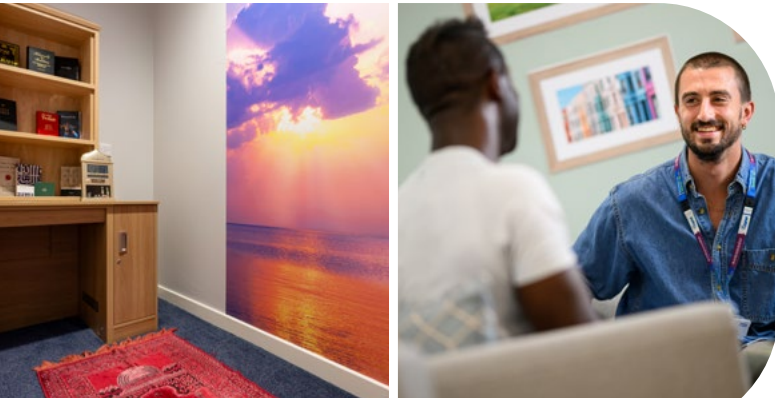
*Improving lives together*

# Bespoke Care Packages for Adults

Fully bespoke placements in customised  
environments for people with complex needs

## For individuals struggling to make progress in conventional ward environments, Cygnet Health Care offers a number of Bespoke Care Packages across the country.

These custom-made placements benefit from our expert staff team's knowledge, providing a fully tailored package of care designed specifically for those with unique or additional needs to support their journey toward recovery and independence.



Our teams collaborate closely with families, commissioners, and community-based teams to identify suitable discharge pathways and establish achievable goals and timelines.

Each placement is suitable for one person to be supported, and we can adjust the environments to suit the individual's needs. All placements contain a bedroom, an en-suite or private bathroom and multi-purpose rooms suitable for therapies, mealtimes, sensory regulation, or family visits where appropriate.

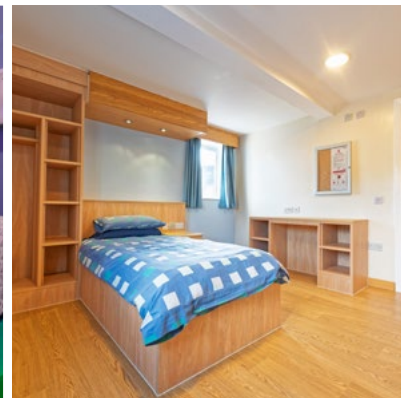
All of our bespoke care packages consider all aspects of a person's wellbeing, including their social, emotional, educational and cultural needs. This often involves engagement in activities tailored to their interests and maintaining family involvement where appropriate.

### We can support people with multiple complex needs, including individuals who may:

- > Require 24/7 care and support
- > Exhibit behaviours of distress
- > Self-harm
- > Struggle to cope with, or engage with, peers
- > Experience sensory issues
- > Struggle with emotional regulation
- > Have experienced placement breakdowns or been unable to progress in an inpatient setting
- > Have one of more of the following: learning disability, autism, personality disorder, eating disorder, or other mental illness

### Supporting people with:

- > Mental Illness
- > Personality Disorders
- > Autism
- > Learning Disabilities
- > Eating Disorders
- > Disordered Eating



### Placement overview:

- > Placements for men and women aged 18+
- > Full multidisciplinary support within specialist services
- > Independent spaces away from our main wards
- > Personalised activity and therapy timetables
- > Core staffing teams for consistency and relationship building
- > National network of step-down services
- > Sensory-friendly and low-stimulus spaces
- > Least restrictive environments

# Bespoke Care Packages for Adults - Locations:

- 1 Cygnet Churchill**  
Barkham Terrace, Lambeth Road, London SE1 7PW  
T: **020 7928 2334**  
Supporting men or women with Mental Illness / Learning Disabilities / Autism / Personality Disorder
- 2 Cygnet Hospital Bierley**  
Bierley Lane, Bradford, West Yorkshire, Yorkshire and Humber BD4 6AD  
T: **01274 686 767**  
Supporting men or women with Mental Illness / Eating Disorders / Learning Disabilities / Autism
- 3 Cygnet Hospital Ealing**  
22 Corfton Road, Ealing, London W5 2HT  
T: **020 8991 6699**  
Supporting women with Eating Disorders / Autism / Personality Disorder
- 4 Cygnet Hospital Godden Green**  
Godden Green, Sevenoaks, Kent TN15 0JR  
T: **01732 763 491**  
Supporting women with Mental Illness
- 5 Cygnet Hospital Harrow**  
London Road, Harrow on the Hill, Middlesex, London HA1 3JL  
T: **020 8966 7000**  
Supporting men or women with Mental Illness / Autism
- 6 Cygnet Hospital Kidsgrove**  
Boathorse Road, Kidsgrove, Stoke-on-Trent, Staffordshire ST7 4JA  
T: **01782 378672**  
Supporting women with Personality Disorder / Autism
- 7 Cygnet Hospital Maidstone**  
Gidds Pond Way, Weaving, Maidstone, Kent ME14 5FT  
T: **01622 580 330**  
Supporting men or women with Personality Disorder / Autism
- 8 Cygnet Hospital Taunton**  
Orchard Portman, Taunton, Somerset TA3 7BQ  
T: **01823 336 457**  
Supporting men with Mental Illness / Learning Disabilities / Autism
- 9 Cygnet Manor**  
Central Drive, Shirebrook, Nottinghamshire, East Midlands NG20 8BA  
T: **01623 741 730**  
Supporting men with Learning Disabilities / Autism
- 10 Cygnet Nield House**  
Barrows Green, Bradfield Road, Crewe, Cheshire CW1 4QW  
T: **01270 696510**  
Supporting women with Personality Disorder / Disordered Eating
- 11 Cygnet Sherwood Lodge**  
Rufford Colliery Lane, Mansfield, Nottinghamshire NG21 0HR  
T: **01623 499 980**  
Supporting men with Learning Disabilities / Autism
- 12 Cygnet Wast Hills**  
Wast Hills Lane, Kings Norton, Birmingham, West Midlands B38 9ET  
T: **0121 458 2263**  
Supporting men with Autism
- 13 Cygnet Views**  
22 Wellington Street, Matlock, Derbyshire DE4 3JP  
T: **01352 707 220**  
Supporting women with Learning Disabilities / Autism
- 14 Rhyd Alyn**  
Alfonas, Argoed Hall Lane, Mold, Flintshire, North Wales  
T: **01352 707 220**  
Supporting women with Mental Illness

Bespoke care packages can also be created in many of our PICUs.

Contact the Cygnet Bed Hub for more information:  
**0808 164 4450 /**  
[chcl.referrals@nhs.net](mailto:chcl.referrals@nhs.net).



## We are able to take referrals 7 days a week.

To make a referral  
please contact  
**your regional Business  
Relationship Manager.**

Alternatively, you can  
contact the  
Cygnet Bed Hub on:  
**0808 164 4450 /  
chcl.referrals@nhs.net.**



## How to Make a Referral

Planned admissions referral steps:

- 1 Referral made to your **regional Business Relationship Manager** or 0808 164 4450 / [chcl.referrals@nhs.net](mailto:chcl.referrals@nhs.net)
- 2 Assessment arranged and undertaken via our assessment team
- 3 Feedback provided on whether our service can meet the individual needs
- 4 Assessment pack formulated including care plans and funding information
- 5 Admission agreed and plans for transition arranged with referring team following confirmation of acceptance of placement



**Cygnet**

**4 Millbank, 3rd Floor, Westminster, London SW1P 3JA**



**0808 164 4450**

**Follow us on social media:**

*Improving lives together*

