

Improving lives together

Learning Disability Services

- Residential Services with Nursing
- Residential Services
- Supported Living Services
- Specialist Day Services



Welcome

Cygnnet was established in 1988. Since then we have developed a wide range of social care services for adults with autism, learning disabilities and those requiring elderly care within the UK.

We have built a reputation for delivering pioneering services and outstanding outcomes for the individuals in our care.



Our expert and highly dedicated care team of 11,500 employees support 7,500 individuals each year across 150 services to consistency make a positive difference to their lives.



Cygnnet Social Care is part of the Cygnnet Group which also provides healthcare services for young people and adults in England, Scotland and Wales.



Click the buttons to find out more about our Learning Disability Social Care Services

Introduction

- Our Model of Support - Residential Services**
- Views from Residents, Carers, Families and Friends**
- Residential Services with Nursing**
- Residential Services**
- Supported Living Services**
- Specialist Day Services**
- Oakview Services**
- Case Study**
- Map**
- How to Make a Referral**

Contents

Introduction	3
Our Model of Support - Residential Services	6
Views from Residents, Carers, Families and Friends	7
Residential Services with Nursing	
Ellen Mhor, Tayside	8
Hollyhurst, County Durham	9
Hope House, Cleveland	10
Lindsay House, Tayside	11
Oaklands, Northumberland	12
Old Leigh House, Essex	13
Ranaich House, Stirling	14
The Fields, South Yorkshire	15
Thistle House, Tayside	16
Toller Road, Leicestershire	17
Trinity House, Lockerbie	18
Willow House, Birmingham	19
Residential Services	
4, 5, 7 The Sycamores, Derbyshire	20
Adele Cottages, Nottinghamshire	21
Beacon House, West Yorkshire	22
Beckly, West Yorkshire	23
Bryn Y Wawr, Carmarthenshire	24
Chaseways, Hertfordshire	25
Cherry Tree House, Nottinghamshire	26

Clynsaer, Carmarthenshire	27
Conifers, Derbyshire	28
Dene Brook, South Yorkshire	29
Dove Valley Mews, South Yorkshire	30
Ducks Halt, Essex	31
Fairways, Suffolk	32
Gables, Essex	33
Gledholt, West Yorkshire	34
Hansa Lodge, Essex	35
Hawkstone, West Yorkshire	36
Kirkside House, West Yorkshire	37
Kirkside Lodge, West Yorkshire	38
Langdale House, West Yorkshire	39
Longfield House, West Yorkshire	40
Lowry House, Lancashire	41
Norcott House, West Yorkshire	42
Norcott Lodge, West Yorkshire	43
Outwood, West Yorkshire	44
Oxley Woodhouse, West Yorkshire	45
Redlands, County Durham	46
Shear Meadow, Hertfordshire	47
The Fields, South Yorkshire	15
The Old Vicarage, Berkshire	48
The Orchards, Essex	49
Thornfield House, West Yorkshire	50

Trinity Lodge, Lockerbie	51
Walkern Lodge, Hertfordshire	52
Woodrow House, Cheshire	53
Supported Living Services	
North East Supported Living, County Durham	54-55
North West Supported Living, North West	54-55
Staffordshire Supported Living, West Midlands	54-55
Yorkshire Supported Living, West Yorkshire	54-55
Specialist Day Services	
Long Eaton Day Services, Nottinghamshire	56
Sheffield Day Services, South Yorkshire	57
Case Study	59
Map	60
How to Make a Referral	62



Click the **buttons** to find out more about our Learning Disability Social Care Services

Introduction

- Our Model of Support - Residential Services
- Views from Residents, Carers, Families and Friends
- Residential Services with Nursing
- Residential Services
- Supported Living Services
- Specialist Day Services
- Oakview Services
- Case Study
- Map
- How to Make a Referral

Introduction

Our services have considerable experience and expertise in supporting individuals with a learning disability to develop independent skills and to live an active and happy life. We work with them to ensure they have more choice and control in their lives. We find out their strengths, abilities and preferences so that the care provided can be as person-centred and meaningful to each individual as possible.

Most importantly with the right support and help we empower each individual to progress along their care pathway to an environment that suits their needs.

The services we offer are Residential (with and without nursing), Supported Living and Specialist Day Services.

STOMP

Cygnal Supports STOMP and has committed to the STOMP pledge.

Stopping the over-medication of adults and young people with a Learning Disability, Autism or both.

Our resident profile:

- > Adults from the age of 18+ years
- > Individuals with a primary diagnosis of learning disability accompanied with behaviours that challenge including mental illness or a forensic background
- > Individuals with a secondary diagnosis of personality disorder or autism
- > May have communication challenges
- > May have associated complex needs
- > May have physical health needs
- > Individuals using our day services may present with:
 - Physical disabilities
 - Tracheostomy needs
 - Complex body postures
 - Epilepsy
 - Mobility needs
 - Will be living at home or within the community



18+ years



Mixed gender



Mental Health
Act Status: Informal



Click the buttons to find out more about our Learning Disability Social Care Services

Introduction

Our Model of Support
- Residential Services
Views from Residents, Carers, Families and Friends
Residential Services with Nursing
Residential Services
Supported Living Services
Specialist Day Services
Oakview Services
Case Study
Map
How to Make a Referral





Click the buttons to find out more about our Learning Disability Social Care Services

Introduction

[Our Model of Support - Residential Services](#)
[Views from Residents, Carers, Families and Friends](#)
[Residential Services with Nursing](#)
[Residential Services](#)
[Supported Living Services](#)
[Specialist Day Services](#)
[Oakview Services](#)
[Case Study](#)
[Map](#)
[How to Make a Referral](#)

Our services at a glance:

- > High staffing ratios
- > 24/7 x 365 days (excludes Day Services)
- > Anger management & positive behaviour support
- > Daily living skills
- > Community participation
- > Meaningful activities

Our multi-disciplinary teams:

- > Psychiatry
- > Psychology
- > Occupational therapy
- > Speech and language therapy
- > Nursing
- > Specialist trained support workers

Our outcome measurement tools:

Residential Services:

- > Social Care LD GAP
- > Behaviours that Challenge
- > Health Risk Levels
- > Eating & Drinking
- > Personal Care & Hygiene
- > Domestic Tasks
- > Communication
- > Social interaction
- > Community Presence & Participation
- > Activity Engagement FCSP (Functional Communication and Skill Profile)
- > Day Services:
- > GAP (Global Assessment of Progress)
- > Respiratory conditions
- > Eating & drinking skills
- > Daily risk assessments
- > Communication abilities
- > Mobility & positioning



Our Model of Support - Residential Services

At Cygnet Social Care we believe that each individual with a **learning disability** has the right to a happy and fulfilled life regardless of their level of support.

To help guide us and make sure we are all working together to achieve this we have formed **Our Model of Support for our Residential Services**. A guide that shows what we do as an organisation to support individuals with **learning disabilities**.



Click the **buttons** to find out more about our Learning Disability Social Care Services

Introduction

Our Model of Support - Residential Services

Views from Residents, Carers, Families and Friends
Residential Services with Nursing
Residential Services
Supported Living Services
Specialist Day Services
Oakview Services
Case Study
Map
How to Make a Referral



Views from Residents, Carers, Families and Friends

The views of the people who use our services, alongside their families, friends and carers are extremely important to us.

We want to work together to make sure that we are meeting individual needs and providing the treatment, care and support that people rightly expect and deserve and we care deeply about the experiences of our service users. We are proud of the quality of care we deliver and the difference we make. We are exceptionally proud of the feedback we have received from those we support and their loved ones.



Carers, Families and Friends

How satisfied are you that you were identified as having an important caring role for your friend or family member?

4.8 stars



How satisfied are you that your views and knowledge are sought about for your friend or family member?

4.7 stars



How satisfied are you that you know who to contact to express concerns about your friend or family member?

4.8 stars



How satisfied are you that staff are polite and approachable?

4.8 stars



How likely are you to recommend our service to family and friends if they need similar care or treatment?

4.7 stars



Residents

Staff listen to the way I want to be supported

4.4 stars



Staff treat me with respect

4.6 stars



Staff help me to do things that are important to me

4.5 stars



Staff give me enough information to make my own decisions

4.4 stars



I feel safe

4.4 stars



*Data from Jan 24-December 25.



Click the buttons to find out more about our Learning Disability Social Care Services

Introduction

Our Model of Support - Residential Services

Views from Residents, Carers, Families and Friends

Residential Services with Nursing

Residential Services

Supported Living Services

Specialist Day Services

Oakview Services

Case Study

Map

How to Make a Referral



Ellen Mhor, Tayside

2-4 Ellen Street, Dundee, Tayside, Scotland DD1 2QH

Residential Services with Nursing



18+ years



Mixed
Gender



12 placements

Ellen Mhor is a specialist residential service with nursing, supporting adults living with learning disabilities and complex needs, and who may have an autistic spectrum condition. The team also supports individuals who have behaviours that may challenge and associated mental or physical health needs. We provide specialist nursing care and support that is tailored to individual needs, promoting independence and community integration.

Ellen Mhor is a large detached house with its own private garden situated in a residential area of Dundee. Everyone at Ellen Mhor has their own en-suite bedroom and they are encouraged and supported to personalise their rooms. There is a choice of three living areas that residents can choose from, as well as a bright and airy dining room and conservatory. There is a life skills kitchen and lounge area where residents are supported in a small group to develop and maintain independent living skills such as menu planning and preparing their own drinks, snacks and meals.

In Dundee, there are many activities for residents to access, including leisure centres, cinema, theatre, markets, shops and cafés. The team at Ellen Mhor aim to promote individuals' independence. They do this by working closely with residents to ensure that their wishes, needs and interests are met. Ellen Mhor has regular house meetings where they discuss a wide range of topics from meal planning to arranging their social calendars.

Our experienced staff team use least restrictive practice approaches and are trained in specialised intervention techniques and sensory integration strategies. Individuals may come to Ellen Mhor for many reasons. They may be moving through their care pathway from a hospital setting or may require extra support during a difficult period in their life, or they could be on a pathway to a place of their own.

Our facilities:

- > En-suite bedrooms
- > Choice of living areas
- > Bright dining room
- > Life skills kitchen
- > Activity room
- > Patio and seating areas



Newly created
sensory garden
created and
designed
by residents



Graded all 4's with
the Care Inspectorate



Achieved the
Dignity in Care Award

Therapeutic earnings
scheme available, residents can
apply for paid work within the service



Click the buttons to find out
more about our Learning
Disability Social Care Services

Introduction

Our Model of Support
- Residential Services

Views from Residents, Carers,
Families and Friends

Residential Services with Nursing

Ellen Mhor, Tayside
Hollyhurst, County Durham
Hope House, Cleveland
Lindsay House, Tayside
Oaklands, Northumberland
Old Leigh House, Essex
Ranaich House, Stirling
The Fields, South Yorkshire
Thistle House, Tayside
Toller Road, Leicestershire
Trinity House, Lockerbie
Willow House, Birmingham

Residential Services
Supported Living Services
Specialist Day Services
Oakview Services
Case Study
Map
How to Make a Referral



Sarah's
Journey

Find out more >

Read about how the team at
Ellen Mhor transformed Sarah's life.





Hollyhurst, County Durham

118 Woodland Road, Darlington, County Durham, North East DL3 9LN

Residential Services with Nursing



18+ years



Mixed Gender



22 placements in 4 living units

Hollyhurst is a specialist residential service with nursing, supporting individuals with learning disabilities and complex needs in Darlington, County Durham. The specialist MDT led team support individuals who have additional mental or physical health needs and behaviours that may challenge.

The team specialise on taking people who are in a crisis. Depending on the individual's level of need, we provide different levels of support within 3 areas:

14 beds in the main house - there are a number of living areas including a quiet lounge and two large communal lounges. In addition the service has a resident's café, life skills kitchen, IT room as well as a relaxation room. Everyone has their own bedroom, some of which are en-suite, which they are encouraged to decorate and personalise to suit their own personal style.

4 single occupancy flats – these bespoke flats provide individuals with more complex support needs in their own space to live more independently with staff support. We support individuals to gain the skills needed for moving on to supported living.

Our community links:

- > Shops and restaurants
- > Swimming pools and leisure centres
- > Vocational opportunities
- > Community facilities specialising for individuals with learning disabilities
- > Great transport links

Our facilities:

- > Multiple lounges
- > Communal dining room
- > Gardens
- > Café area
- > Bespoke accommodation for individuals with more complex support needs
- > Life skills kitchen

Hollyhurst Lodge – within the grounds, this 2 bedroom bungalow is a bespoke self-contained service delivering 24 hour support for two individuals. This service was specially designed in partnership with local commissioners and community teams to provide personalised support for two adults with complex needs.

Hollyhurst is a detached period property is set in its own private gardens which is accessed by a private tree-lined driveway. Located in the town of Darlington, the residents have access to a great range of recreational and leisure facilities as well as being just a short drive away from some beautiful County Durham countryside.

Service is currently being extensively refurbished and developed to meet the needs of the individuals we support



Gardens providing space for individuals to play sports or relax with friends and family



Supporting residents to go on holidays and day trips



Extensive links with local community facilities for individuals with learning disabilities including; performing arts, vocational colleges and volunteering opportunities



Host regular parties for families and individuals from other local Cygnet learning disabilities services



Click the buttons to find out more about our Learning Disability Social Care Services

Introduction

Our Model of Support
- Residential Services

Views from Residents, Carers, Families and Friends

Residential Services with Nursing

Ellen Mhor, Tayside

Hollyhurst, County Durham

Hope House, Cleveland

Lindsay House, Tayside

Oaklands, Northumberland

Old Leigh House, Essex

Ranaich House, Stirling

The Fields, South Yorkshire

Thistle House, Tayside

Toller Road, Leicestershire

Trinity House, Lockerbie

Willow House, Birmingham

Residential Services

Supported Living Services

Specialist Day Services

Oakview Services

Case Study

Map

How to Make a Referral





Hope House, Cleveland

59 Hutton Avenue, Hartlepool, Cleveland, North East TS26 9PW

Residential Services with Nursing



18+ years



Mixed Gender



11 placements in 11 living units



Scan the QR code to view virtual tour

Hope House is a residential service providing outcome focused care for adults with a learning disability and associated complex needs who may have behaviours that challenge.

We encourage and enable the individuals we support to lead a full and happy life. We work with them to ensure they have more choice and control in their lives. We find out their strengths, abilities and preferences so that the care provided can be as person-centred and meaningful to each individual as possible.

The service is split into 2 neighbouring properties Hope House (no. 59) and Hope Lodge (No. 57). This newly refurbished service consists of a number of bespoke self-contained flats, studio flats and en-suite bedrooms providing personalised support. Externally we have a lovely spacious garden where individuals are supported to grow their own plants and vegetables.

- > Hope House has 5 self-contained flats, which host a bathroom, a kitchenette and a living / dining room. In addition, Hope House also has a studio flat.
- > Hope Lodge has one en-suite bedroom and three individual flats, each with their own lounge. In addition to this private space, Hope Lodge also has a spacious dining kitchen and a lounge, enabling the individuals living here to socialise and develop their independent living skills.

Promoting an individual's independence is very important at Hope House, so we ensure that we have a robust transition plan in place so that we can focus on the needs of that individual. The team ensure that the support provided is person-centred to each resident. Everything we do is catered around their needs, whether that be going out on an excursion, visiting their families or perhaps even making their own cup of tea.

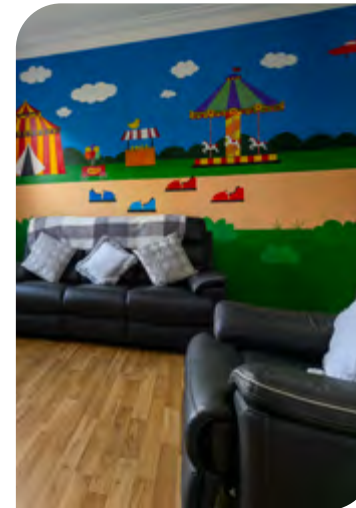
Hope House is in Hartlepool within walking distance to the town centre where there is an abundance of community facilities available, including colleges, swimming pools, a cinema, shops and a gardening club. In addition just a 10 minute drive from the service, you will find Hartlepool Marina which is an 18th century seaport that features an abundance of bistros, bars, cafes, restaurants and entertainment options.

Our facilities:

- > Bespoke apartments, each with their own living space
- > Living and dining areas
- > Kitchenettes
- > Communal and private gardens

Our community links:

- > Colleges
- > Swimming pools and gyms
- > Cinema
- > Shops
- > Restaurants, pubs and cafes
- > Discos
- > Gardening club
- > Hartlepool Marina
- > Town centre
- > Short drive from local beaches



Click the buttons to find out more about our Learning Disability Social Care Services

Introduction

Our Model of Support - Residential Services

Views from Residents, Carers, Families and Friends

Residential Services with Nursing

Ellen Mhor, Tayside
Hollyhurst, County Durham
Hope House, Cleveland
Lindsay House, Tayside
Oaklands, Northumberland
Old Leigh House, Essex
Ranaich House, Stirling
The Fields, South Yorkshire
Thistle House, Tayside
Toller Road, Leicestershire
Trinity House, Lockerbie
Willow House, Birmingham

Residential Services

Supported Living Services

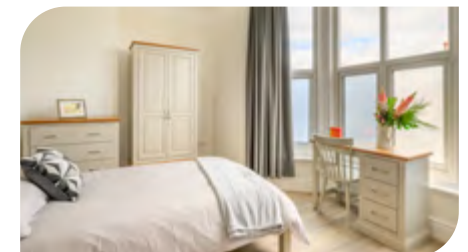
Specialist Day Services

Oakview Services

Case Study

Map

How to Make a Referral





Lindsay House, Tayside

119 Americanmuir Road, Dundee, Tayside, Scotland DD3 9AG

Residential Services with Nursing



18+ years



Mixed
Gender



2 placements in 2 self-contained living units

Lindsay House consists of two bespoke single person apartments providing a more independent living environment. Lindsay House is suitable for individuals with a learning disability who also have additional complex needs and behaviours that may challenge, requiring bespoke staffing packages.

These apartments each have their own front door, lounge and personalised en-suite bedroom, as well as a kitchen to support learning independent living skills and a shared private garden.

The individuals at **Lindsay House** are supported to access the extensive array of community amenities, including leisure centres, social clubs, shops, colleges, and work placement settings. They may also enjoy walks and visits to the nearby botanical gardens and Discovery Quay.

Lindsay House was designed with wellness in mind, providing a safe and comfortable environment that promotes independent living based on the specific individual requirements.

Each resident has their own individual activity plan, which is created based on their likes and hobbies. Their goal is to enable individuals to structure their time, build relationships and establish a balance between therapy, self-care, work and leisure, as appropriate to their individual needs.



Our facilities:

- > En-suite bedrooms
- > Kitchen
- > Lounge
- > Each apartment has its own front door
- > Enclosed garden

Our community links:

- > Local leisure centres
- > Social clubs
- > Shops
- > Colleges
- > Botanical gardens
- > Discovery Quay
- > Great transport links



Click the buttons to find out more about our Learning Disability Social Care Services

Introduction

Our Model of Support
- Residential Services

Views from Residents, Carers,
Families and Friends

Residential Services with Nursing

Ellen Mhor, Tayside

Hollyhurst, County Durham

Hope House, Cleveland

Lindsay House, Tayside

Oaklands, Northumberland

Old Leigh House, Essex

Ranaich House, Stirling

The Fields, South Yorkshire

Thistle House, Tayside

Toller Road, Leicestershire

Trinity House, Lockerbie

Willow House, Birmingham

Residential Services

Supported Living Services

Specialist Day Services

Oakview Services

Case Study

Map

How to Make a Referral





Oaklands, Northumberland

Anick Road, Hexham, Northumberland, North East NE46 4JR

Residential Services with Nursing



18+ years



Mixed Gender



15 placements (10 + 5 single occupancy flats)

Oaklands is a specialist residential service with nursing, supporting people with learning disabilities and complex needs in Hexham, Northumberland. The team support individuals who have additional mental or physical health needs and behaviours that may challenge.

The service has undergone exciting developments to create single occupancy living for 5 people who may require additional staff support.

- > 5 single occupancy flats - These self-contained living areas provide the opportunity for 5 individuals with more challenging needs to live in their own space with staff support. Each flat has a lounge, kitchen / diner, en-suite bedroom as well as a staff observation area. In addition one of the flats is located away from the main house and has its own front door and garden.
- > 10 en-suite bedrooms with multiple lounge and dining facilities. Other facilities within the service that are accessible for all individuals include a sensory room, large garden, café area and a conservatory.

Our facilities:

- > En-suite bedrooms
- > Multiple lounges
- > 2 dining rooms
- > Activity space
- > Large garden with seating and allotment
- > Sensory room
- > Café area
- > 5 individual flats with their own lounge, kitchen diner and

Large garden including picnic area, local wildlife including pheasants, a greenhouse and vegetable patch



Oaklands is a large detached property with extensive living areas. Close to the historic market town of Hexham, residents can access a good choice of recreational and leisure facilities. These include a swimming pool, a library, parks and shops, as well as the beautiful surrounding countryside.

Oaklands has a dedicated activity coordinator who supports residents to have individual activity plans, created based on each person's likes and hobbies. Individuals are supported to plan menus, shop and prepare food with support to increase their daily living skills in readiness for moving on.

Our community links:

- > Shops and restaurants
- > Swimming pools and leisure centres
- > Hadrian's Wall
- > Queen's Hall Arts Centre
- > Vocational opportunities
- > Beautiful countryside including Hadrian's Wall and local farms during lambing season
- > Community centres specialising for individuals with learning disabilities



Weekly Makaton signing café

Residents supported to access local volunteering opportunities



Click the buttons to find out more about our Learning Disability Social Care Services

Introduction

Our Model of Support - Residential Services

Views from Residents, Carers, Families and Friends

Residential Services with Nursing

Ellen Mhor, Tayside

Hollyhurst, County Durham

Hope House, Cleveland

Lindsay House, Tayside

Oaklands, Northumberland

Old Leigh House, Essex

Ranaich House, Stirling

The Fields, South Yorkshire

Thistle House, Tayside

Toller Road, Leicestershire

Trinity House, Lockerbie

Willow House, Birmingham

Residential Services

Supported Living Services

Specialist Day Services

Oakview Services

Case Study

Map

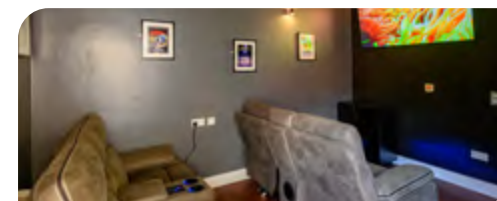
How to Make a Referral



Stephen's Journey

Find out more >

Read about how the team at Oaklands transformed Stephen's life.





Old Leigh House, Essex

3 Old Leigh Road, Leigh-on-Sea, Essex, East SS9 1LB

Residential Services with Nursing



18+ years



Male



6 placements

Old Leigh House supports men living with a learning disability and complex needs. The team can also support those who have mental and physical health needs, as well as behaviours that may challenge and a history of offending.

Old Leigh House is a large semi-detached house, overlooking a park. The service has a choice of lounges and communal areas for residents to choose from and a small garden at the back of the house. The house has been specially adapted and has an accessibility lift for those individuals who come to us with mobility needs.

Residents can enjoy a wide range of activities at the seaside towns nearby, with many coastal walks to enjoy, as well as some lovely beaches. They can also visit the shops or take part in local activities, such as bowling, going to the theatre, visiting the zoo, go karting or going to the cinema. The service also benefits from being within easy access to two main train lines into London.

Old Leigh House has a dedicated occupational therapist and activity coordinator who support residents to have individual activity plans, created based on each person's likes and hobbies. Their goal is to enable residents to structure their time, build relationships and establish a balance between therapy, self-care, work and leisure, as appropriate to their individual needs.

Individuals come to Old Leigh House for different reasons; they may require more support than can be provided in a supported living setting or they may be moving along their care pathway from a hospital placement. Whatever the reason, the team at Old Leigh House can offer specialist input based on individual need to deliver flexible and effective support.

Our community links:

- > Colleges
- > Bowling
- > Shops
- > Theatre
- > Coastal walks and beaches
- > Excellent transport links to London

Our facilities:

- > En-suite bedrooms
- > Choice of living areas
- > Dining room
- > Small private garden

"I feel the staff caring for my son are very competent and they go above and beyond in order to do their job in the best way."

Family member

In-house Multi-Disciplinary Team
consisting of Nurses, Occupational Therapy,
Speech and Language Therapy



Supporting individuals to build friendship groups in the local community



Easy read and other accessible information available to all residents



Person-centred meal planning,
including shopping and cooking



Click the buttons to find out more about our Learning Disability Social Care Services

Introduction

Our Model of Support
- Residential Services

Views from Residents, Carers,
Families and Friends

Residential Services with Nursing

Ellen Mhor, Tayside

Hollyhurst, County Durham

Hope House, Cleveland

Lindsay House, Tayside

Oaklands, Northumberland

Old Leigh House, Essex

Ranaich House, Stirling

The Fields, South Yorkshire

Thistle House, Tayside

Toller Road, Leicestershire

Trinity House, Lockerbie

Willow House, Birmingham

Residential Services

Supported Living Services

Specialist Day Services

Oakview Services

Case Study

Map

How to Make a Referral



Henry's Journey

Find out more >

Read about how the team at Old Leigh House transformed Henry's life.





Ranaich House, Stirling

Leewood Road, Dunblane, Stirling, Scotland FK15 0DR

Residential Services with Nursing



18+ years



Mixed Gender



14 placements in 2 living units



Scan the QR code to watch Steven's Story

Ranaich House is a specialist residential service with nursing, supporting adults with learning disabilities and complex needs, including those with mental health or physical health needs. We provide specialist nursing care and support that is tailored to individual needs, promoting independence and community integration.

Ranaich House is a large period detached property, formerly a private Victorian villa with coach house, stables and mature woodland gardens. The main house has 12 en-suite bedrooms, a number of good sized living areas, dining room, a gym and sensory room, as well as two life skills kitchens, where individuals can plan menus and prepare their own drinks, snacks and meals. Externally there is a spacious and private garden which hosts seating areas, a greenhouse and herb garden and plenty of space for playing sports and games.

Within the grounds at Ranaich House we have the Coach House which is a two bedroomed cottage. The Coach House has staff support at all times and offers residents the opportunity to experience more independence, whilst living in a safe environment. It has its own front door and enclosed, private gardens.

Ranaich House is located in a beautiful area in Dunblane, with stunning scenery of mountain views. The local area has an abundance of amenities and the residents are supported to access these.

For those wanting to venture a little further, Stirling and Falkirk are a short drive away. The activity coordinator at Ranaich House is focussed on ensuring that residents can be part of their local community and have access to education, employment and other day opportunities to meet their needs.



Our facilities:

- > 12 en-suite bedrooms
- > 2 bedroom Coach House
- > Good sized lounges including a movie room and games consoles
- > Dining areas
- > 2 activities of Daily Living (ADL) skills kitchen
- > Large garden with seating areas, a greenhouse and herb garden and plenty of space for playing sports and games
- > Sensory room
- > Gym
- > Arts and craft stations located around the house

Our community links:

- > Cafés and restaurants
- > Parks
- > Library
- > Shops
- > Countryside walks
- > Great public transport links to Stirling and Falkirk
- > Colleges
- > Sports facilities including the tennis club, the Dunblane Hydro and the Dunblane centre



Rated '5 Very Good' by the Care Inspectorate

Person-centred meal planning, residents plan, shop and cook their own meals



Therapeutic earnings programme to enable residents to gain employment skills and earn money at the same time



Click the buttons to find out more about our Learning Disability Social Care Services

Introduction

Our Model of Support - Residential Services

Views from Residents, Carers, Families and Friends

Residential Services with Nursing

Ellen Mhor, Tayside

Hollyhurst, County Durham

Hope House, Cleveland

Lindsay House, Tayside

Oaklands, Northumberland

Old Leigh House, Essex

Ranaich House, Stirling

The Fields, South Yorkshire

Thistle House, Tayside

Toller Road, Leicestershire

Trinity House, Lockerbie

Willow House, Birmingham

Residential Services

Supported Living Services

Specialist Day Services

Oakview Services

Case Study

Map

How to Make a Referral



Philip's Journey

Find out more >

Read about how the team at Ranaich House transformed Philip's life.





The Fields, South Yorkshire

Spa Lane, Woodhouse, Sheffield, South Yorkshire, Yorkshire & Humber S13 7PG

Residential Services with Nursing

Residential Services



17+ years



Mixed Gender



54 placements in 7 living areas

The Fields is a specialist residential service in Sheffield, South Yorkshire for adults with learning disabilities who may have behaviours that challenge as well as associated complex needs.

We encourage and enable the people we support to lead a full and happy life. We work with them to ensure they have more choice and control in their lives. We find out their strengths, abilities and preferences so that the care provided can be as person-centred and meaningful to each individual as possible.

The Fields is split into seven different living areas, six of which are residential and one is a registered nursing service:

- > Residential with nursing
 - Willows – 10 beds
- > Residential
 - Ferns – 10 beds
 - Limes – 10 beds
 - Acorns – 10 beds
 - Poplars – 6 beds
 - Hollies – 4 beds
 - Oaks – 4 beds



Each unit has its own garden, lounge, kitchen and dining space as well as en-suite facilities. Central to all the units is a large open space called the sensory garden. This space is available for all residents and is a popular space for activities, parties, live shows and entertainers.

The Fields is situated in Woodhouse in Sheffield, which is a vibrant residential area, with easy access to shops and local amenities. The Fields has access to its own fleet of transport, which is used to take residents to appointments and for home visits. The residents are also able to engage in community activities with some of the favourite being visiting the zoo, plane spotting at the airport, museums and trips to the seaside.

The two activity coordinators support individuals in creating their person-centred activity planners and developing daily living skills both inside the home and out in the community.

We enable each individual to build upon their skills to achieve further independence and confidence, leading to a better quality of life.

Willow is our only residential service with nursing, however the nurses (RGN, RNLD & RMN) in this living unit oversee the other units providing additional support to the support team should someone become unwell.



Rated **'Outstanding'** in well-led and 'Good' overall by the CQC

Easy read and other accessible information available to all residents



High retention of staff

throughout the service – Over 50% of staff have been at the service for 5 years or more



7 gardens – residents are able to grow their own plants and will often have competitions



Twice weekly independent advocacy visits



Click the buttons to find out more about our Learning Disability Social Care Services

Introduction

Our Model of Support
- Residential Services

Views from Residents, Carers, Families and Friends

Residential Services with Nursing

Ellen Mhor, Tayside

Hollyhurst, County Durham

Hope House, Cleveland

Lindsay House, Tayside

Oaklands, Northumberland

Old Leigh House, Essex

Ranaich House, Stirling

The Fields, South Yorkshire

Thistle House, Tayside

Toller Road, Leicestershire

Trinity House, Lockerbie

Willow House, Birmingham

Residential Services

Supported Living Services

Specialist Day Services

Oakview Services

Case Study

Map

How to Make a Referral





Thistle House, Dundee

14 Fairfield Road, Broughty Ferry, Dundee, DD5 1PL

Residential Services with Nursing



18+ years



Mixed Gender



10 placements

Situated in a residential area of Dundee, Thistle House is a specialist residential service supporting up to ten individuals with learning disabilities and complex needs. The team of nurses and support workers also support those with behaviours that may challenge, as well as those who have associated mental health needs.

Thistle House is a purpose-built building with its own gardens. The service delivers 24 hour care and support within a structured environment. There are a number of living areas for individuals to choose from, whether they want time to socialise as a group, or to spend time alone. Everyone has their own en-suite bedroom, which they are encouraged to decorate and personalise to suit their own personal style.

The service also features a state of the art sensory room as well as a number of different outdoor spaces for individuals to choose from. There is a supported life skills kitchen where individuals can plan and cook meals and snacks for themselves and their visitors.

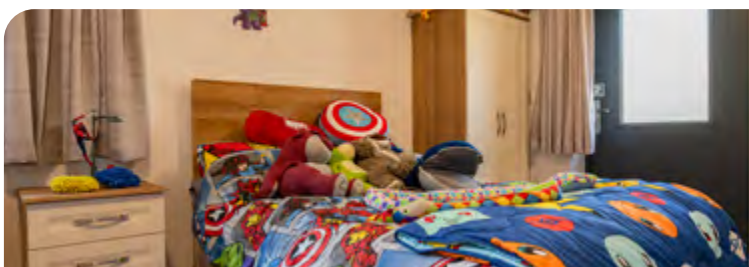
Thistle House is located in the city of Dundee, which has an extensive array of community amenities, including leisure centres, social clubs, shops, colleges, and work placement settings. Individuals can also enjoy walks and visits to the nearby botanical gardens and Discovery Quay.

The dedicated activity coordinator supports residents to have individual activity plans, based on each person's likes and hobbies. Their goal is to enable residents to structure their time, build relationships and establish a balance between therapy, self-care, work and leisure.

Individuals come to Thistle House for different reasons; they may require more support than can be provided in a supported living setting, or they may be moving along their care pathway from a hospital placement. Whatever the reason, Thistle House can offer specialist input based on individual need to deliver flexible and effective support.

Our facilities:

- > En-suite bedrooms, which individuals are supported to personalise
- > Choice of living and dining areas
- > Life skills kitchens
- > Sensory room
- > Garden



Our community links:

- > Leisure centres
- > Social clubs
- > Colleges
- > Botanical gardens
- > Discovery Quay



Click the buttons to find out more about our Learning Disability Social Care Services

Introduction

Our Model of Support
- Residential Services

Views from Residents, Carers, Families and Friends

Residential Services with Nursing

Ellen Mhor, Tayside

Hollyhurst, County Durham

Hope House, Cleveland

Lindsay House, Tayside

Oaklands, Northumberland

Old Leigh House, Essex

Ranaich House, Stirling

The Fields, South Yorkshire

Thistle House, Tayside

Toller Road, Leicestershire

Trinity House, Lockerbie

Willow House, Birmingham

Residential Services

Supported Living Services

Specialist Day Services

Oakview Services

Case Study

Map

How to Make a Referral





Toller Road, Leicestershire

13 Toller Road, Stoneygate, Leicester, East Midlands LE2 3HP

Residential Services with Nursing



18+ years



Mixed Gender



8 placements

Toller Road is a specialist residential service, supporting adults with learning disabilities and complex needs, including those with mental health or physical health needs. We can also provide specialist nursing care, with support tailored to individual needs.

We encourage and enable the individuals we support to lead a full and happy life. We work with them to ensure they have more choice and control in their lives. We find out their strengths, abilities and preferences so that the care provided can be as person-centred and meaningful to each individual as possible.

Toller Road is in a quiet residential area in Leicester close to the city centre. The service is very close to local amenities with really good bus and rail links nearby.

Each individual that comes to Toller Road is unique in their own way, we ensure that we have a robust transition plan in place so that we can focus on the needs of that individual. The team ensures that the support provided is person-centred to each resident. Everything we do is catered around their needs, whether that be going out on an excursion, visiting their families, attending college or perhaps even making their own cup of tea.

Toller Road is a semi-detached house with its own private garden. Everyone at Toller Road has their own en-suite bedroom and they are encouraged and supported to personalise their rooms. There is a quiet lounge and also an activity lounge for the residents to share. The service also has a life skills kitchen where individuals can plan menus and prepare their own drinks, snacks and meals and do their own laundry too should they wish.

Our community links:

- > Cinema
- > Crazy golf
- > Local parks (Victoria Park and Bradgate Park)
- > Colleges
- > Shops, cafés and restaurants
- > Sports clubs
- > Community gym
- > Physical therapy visits
- > Learning disabilities disco

Our facilities:

- > Quiet lounge
- > Activity lounge
- > Sensory facilities
- > En-suite bedrooms
- > Assisted bathroom
- > Spacious garden with seating area
- > Activities of Daily Living (ADL) skills kitchen
- > Accessible ground floor bedrooms
- > En suite wet rooms



Supporting individuals to enhance their skills and their social circles



A homely environment with 24 hour nursing support



Regular parties and family visits to celebrate special occasions and birthdays



Nearby we have a number of colleges and universities that provide courses for individuals with learning disabilities



Click the buttons to find out more about our Learning Disability Social Care Services

Introduction

Our Model of Support - Residential Services

Views from Residents, Carers, Families and Friends

Residential Services with Nursing

Ellen Mhor, Tayside

Hollyhurst, County Durham

Hope House, Cleveland

Lindsay House, Tayside

Oaklands, Northumberland

Old Leigh House, Essex

Ranaich House, Stirling

The Fields, South Yorkshire

Thistle House, Tayside

Toller Road, Leicestershire

Trinity House, Lockerbie

Willow House, Birmingham

Residential Services

Supported Living Services

Specialist Day Services

Oakview Services

Case Study

Map

How to Make a Referral



David's Journey

Find out more >

Read about how the team at Toller Road transformed David's life.





Trinity House, Lockerbie

38 Carlisle Road, Lockerbie, Scotland DG11 2DS

Residential Services with Nursing



18+ years



Mixed Gender



13 placements in 2 living units

Located in the heart of a residential community in Lockerbie, Trinity House is a specialist residential service with nursing, supporting adults with learning disabilities and complex needs. The team also support individuals who have behaviours that may challenge and associated mental or physical health needs.

Trinity House has 11 en-suite bedrooms in a detached period property set away from the main road. There is a choice of living areas, a bright dining room, an activities room and a life skills kitchen. Outside there is large garden where the residents grow their own vegetables and they have chickens who provide eggs for the service.

Also in the grounds is a 2 bed bungalow, this part of the service supports those who are making their move towards more independent living. As well as its own kitchen and living space, the bungalow also has its own private garden.

The individuals at Trinity House may be stepping down from hospital provision or may need a more robust package of care than can be provided in supported living. They may also be on a journey towards a place of their own.

On-site multi-disciplinary team consisting of psychology and speech and language therapy



Residents are supported to attend college courses



Handyman provides **woodwork workshops** for residents



Large garden for entertaining

Our facilities:

- > En-suite bedrooms
- > Choice of living areas and dining room
- > Activities room
- > Life skills kitchen
- > Garden with greenhouses and seating areas

Our community links:

- > Leisure centres
- > Sensory centres
- > Hydrotherapy centre
- > Social clubs
- > Shops
- > Colleges and work placement settings
- > Local river for fishing



Click the buttons to find out more about our Learning Disability Social Care Services

Introduction

Our Model of Support - Residential Services

Views from Residents, Carers, Families and Friends

Residential Services with Nursing

Ellen Mhor, Tayside

Hollyhurst, County Durham

Hope House, Cleveland

Lindsay House, Tayside

Oaklands, Northumberland

Old Leigh House, Essex

Ranaich House, Stirling

The Fields, South Yorkshire

Thistle House, Tayside

Toller Road, Leicestershire

Trinity House, Lockerbie

Willow House, Birmingham

Residential Services

Supported Living Services

Specialist Day Services

Oakview Services

Case Study

Map

How to Make a Referral



Lizzie's Journey

Find out more >

Read about how the team at Trinity House transformed Lizzie's life.





Willow House, Birmingham

229 Portland Road, Edgbaston, Birmingham, West Midlands B17 8LS

Residential Services with Nursing



18+ years



Mixed Gender



8 placements

Willow House is a specialist residential service with nursing for adults with learning disabilities, complex needs and behaviours that may challenge.

We also support individuals who have associated mental and physical health needs, including those with a secondary diagnosis of autism. With our in-house qualified Mental Health and Learning Disability Nurses (RMN's and RNLD's), we can provide specialist nursing care and support, which is tailored to the needs of the individual. We can also offer bespoke packages including Speech and Language Therapy input for individuals that may require it.

We aim to promote increased independence and community integration for the individuals in our care.

Located within the community of Edgbaston in Birmingham, Willow House is a spacious detached house with two comfortable living areas, a dining room and a conservatory where individuals can have private time with their families, friends or other visitors. Everyone has their own en-suite bedroom, which they are encouraged to personalise and decorate to make their own. There is a life skills kitchen where residents can plan and cook meals for themselves and their visitors. Willow House also has a spacious garden with seating areas for relaxing outside with friends.

Willow House is well connected by bus to Birmingham city centre, and individuals are supported to visit shops, the large library, local museums and restaurants. Nearby Cadbury World is also very popular. The activity coordinator leads monthly trips to local historic and cultural sights, which everyone enjoys. The city centre offers excellent rail links to neighboring cities and further afield.

The team at Willow House aim to promote individuals' independence. They do this by working closely with residents to ensure that their wishes, needs and interests are met. Willow House has regular house meetings where they discuss a wide range of topics from meal planning to arranging their social calendars.

Individuals may come to Willow House for many reasons. We can provide a safe and homely environment for individuals on a pathway to more independent living, or, for those who may require a higher level of support than a residential setting can offer. Individuals may also come to us from hospital or from home.

Our facilities:

- > En-suite bedrooms
- > Therapy kitchen
- > Variety of activity areas
- > Dining room
- > Lounge
- > Garden



Weekly house meeting for individuals
to have their say,
including 'you said, we did'



Art therapy sessions
provided in-house



Independent advocate
attends the
service weekly



Support residents
on person-centred
holidays and trips



Supporting individuals to attend sessions
at a local learning disability charity to help increase
their independent living skills e.g., cooking & budgeting



Weekly well-being Wednesday sessions



Our community links:

- > Birmingham city centre
- > Cafés and restaurants
- > Museums
- > Shops
- > Library
- > Cadbury World



Click the buttons to find out more about our Learning Disability Social Care Services

Introduction

Our Model of Support
- Residential Services

Views from Residents, Carers,
Families and Friends

Residential Services with Nursing

Ellen Mhor, Tayside
Hollyhurst, County Durham
Hope House, Cleveland
Lindsay House, Tayside
Oaklands, Northumberland
Old Leigh House, Essex
Ranaich House, Stirling
The Fields, South Yorkshire
Thistle House, Tayside
Toller Road, Leicestershire
Trinity House, Lockerbie
Willow House, Birmingham

Residential Services
Supported Living Services
Specialist Day Services
Oakview Services
Case Study
Map
How to Make a Referral



*William's
Journey*

Find out more >

Read about how the team at Willow House transformed William's life.





4, 5, 7 The Sycamores, Derbyshire

4, 5, 7 The Sycamores, South Normanton, Derbyshire DE55 3BJ

Residential Services



18+ years



Male



6 placements in 3 self-contained living units

4, 5, 7 The Sycamores is a residential service in Normanton, Derbyshire. This homely service supports men with learning disabilities, who may also have a secondary diagnosis of autism spectrum disorder.

We empower each individual to function to a higher therapeutic level with careful consideration of staffing interventions and clinical input. This gives our residents the freedom and independence to flourish and develop their skills.

The service is made up of three, two bed bungalows with a shared spacious garden and outdoor seating. Each bungalow has its own open plan lounge and kitchen where individuals are supported to develop their daily living skills. In addition, each bungalow has two en-suite bedrooms and the men we support are encouraged to personalise their own space.

Each resident receives an individualised care and support plan which is tailored to their own needs. This helps enable them to achieve successful community living and break a cycle of placement breakdown.

4, 5, 7 The Sycamores is located in the picturesque market town of South Normanton and two miles away from the busy Alfreton town centre. Residents have access to all the local amenities to ensure full integration into community life.

Our community links:

- South Normanton Hub providing training opportunities
- Local colleges and libraries
- Local gym and leisure centre
- McArthurGlen shopping outlet
- Local high street
- Great public transport links
- Derbyshire Peak District
- Tissington and High Peak Trails

Our facilities:

- Spacious garden with outdoor seating
- Three, two bed bungalows
- En-suite bedrooms
- Each bungalow has its own open plan lounge and kitchen where residents are supported to develop their daily living skills



Dual occupancy bungalows

enabling individuals to develop skills before stepping down to independent living



Occupational therapy and speech and language therapy are available as required



Nursing is available 8 hours per day, Monday - Friday



Responsible Clinician involved in care, treatment and regular reviews



Assistant psychologist

available 2 days a week



Click the buttons to find out more about our Learning Disability Social Care Services

Introduction

Our Model of Support - Residential Services

Views from Residents, Carers, Families and Friends

Residential Services with Nursing

Residential Services

4, 5, 7 The Sycamores, Derbyshire

Adele Cottages, Nottinghamshire

Beacon House, West Yorkshire

Beckly, West Yorkshire

Bryn Y Wawr, Carmarthenshire

Chaseways, Hertfordshire

Cherry Tree House, Nottinghamshire

Clynsaer, Carmarthenshire

Conifers, Derbyshire

Dene Brook, South Yorkshire

Dove Valley Mews, South Yorkshire

Ducks Halt, Essex

Fairways, Suffolk

Gables, Essex

Gledholt, West Yorkshire

Hansa Lodge, Essex

Hawkstone, West Yorkshire

Kirkside House, West Yorkshire

Kirkside Lodge, West Yorkshire

Langdale House, West Yorkshire

Longfield, West Yorkshire

Lowry House, Lancashire

Norcott House, West Yorkshire

Norcott Lodge, West Yorkshire

Outwood, West Yorkshire

Oxley Woodhouse, West Yorkshire

Redlands, County Durham

Shear Meadow, Hertfordshire

The Fields, South Yorkshire

The Old Vicarage, Berkshire

The Orchards, Essex

Thornfield House, West Yorkshire

Trinity Lodge, Lockerbie

Walkern Lodge, Hertfordshire

Woodrow House, Cheshire

Supported Living Services

Specialist Day Services

Oakview Services

Case Study

Map

How to Make a Referral



Adele Cottages, Nottinghamshire

Rufford Colliery Lane, Rainworth, Nottinghamshire, East Midlands NG21 0HR

Residential Services



18+ years



Male



2 placements

Adele Cottages are 2 one-bed houses providing residential support for men with learning disabilities, associated complex needs and who may have behaviours that challenge. We provide placements for adults who require a supportive home, with round the clock care. The aim of the service is to provide a pathway from Cygnet Sherwood Lodge and other hospitals back to community living.

Adele Cottages are two spacious 1 bedroom houses down a quiet country lane in Rainworth, Nottinghamshire. The houses have plenty of communal spaces including large gardens, lounges and kitchens where individuals are supported to develop their daily living skills.

We provide support to our residents by providing them with the ability to enhance and maintain their daily living skills. In order to encourage each individual to maintain autonomy and independence as far as possible, individuals are not excluded from undertaking activities simply because there is an element of risk involved. Positive risk taking is considered an integral part of living.



Our community links:

- Sutton Centre Community College and West Nottinghamshire College
- Local shops and supermarkets
- Voluntary work
- Dove Dance: a popular local disco
- Stable management and horse riding (Bolsover)
- Bike riding, walks and picnics at Sherwood Pines
- Vocational links: Forestry Commission, PAVES, grass roots, Willow Tree Farm, Bumbles Café
- Craft / woodwork sessions Local church
- Oaktree and Creswell Leisure Centres

Our facilities:

- Lounge
- Separate dining room
- Kitchen for development of daily life skills
- Garden with outdoor seating
- Downstairs WC
- Separate laundry

Support provided by an advanced nurse practitioner and an assistant psychologist at the service



Supporting individuals to enhance their social skills



Occupational therapy and speech and language therapy are available as required



2 houses

enabling individuals to develop skills before stepping down to independent living



Click the buttons to find out more about our Learning Disability Social Care Services

Introduction

Our Model of Support - Residential Services

Views from Residents, Carers, Families and Friends

Residential Services with Nursing

Residential Services

4, 5, 7 The Sycamores, Derbyshire
Adele Cottages, Nottinghamshire
Beacon House, West Yorkshire
Beckly, West Yorkshire
Bryn Y Wawr, Carmarthenshire
Chaseways, Hertfordshire
Cherry Tree House, Nottinghamshire
Clynsaer, Carmarthenshire
Conifers, Derbyshire
Dene Brook, South Yorkshire
Dove Valley Mews, South Yorkshire
Ducks Hall, Essex
Fairways, Suffolk
Gables, Essex
Gledholt, West Yorkshire
Hansa Lodge, Essex
Hawkstone, West Yorkshire
Kirkside House, West Yorkshire
Kirkside Lodge, West Yorkshire
Langdale House, West Yorkshire
Longfield, West Yorkshire
Lowry House, Lancashire
Norcott House, West Yorkshire
Norcott Lodge, West Yorkshire
Outwood, West Yorkshire
Oxley Woodhouse, West Yorkshire
Redlands, County Durham
Shear Meadow, Hertfordshire
The Fields, South Yorkshire
The Old Vicarage, Berkshire
The Orchards, Essex
Thornfield House, West Yorkshire
Trinity Lodge, Lockerbie
Walkern Lodge, Hertfordshire
Woodrow House, Cheshire

Supported Living Services

Specialist Day Services

Oakview Services

Case Study

Map

How to Make a Referral



Beacon House, West Yorkshire

281 Beacon Road, Wibsey, Bradford, West Yorkshire, Yorkshire & Humber BD6 3DQ

Residential Services



18+ years



Mixed Gender



16 placements in 6 living units

Beacon House is a specialist residential service in West Yorkshire, a suburb of Bradford. We support individuals with learning disabilities, autism, complex needs and behaviours that may challenge.

At Beacon House we encourage and enable the residents to lead a full and happy life. We work with each individual to find out their strengths, abilities and preferences so that the care provided can be as person-centred to each individual as possible.

The service is in a great location in Wibsey, Bradford, Halifax is close by and also on the doorstep of some beautiful countryside walks. The residents are encouraged to be involved in the local community and also supported to visit the city centre which is a 15 minute bus ride away, there is no shortage of community integration.

Beacon House is split into 6 different dwellings across 4 floors enabling individuals to live in smaller groups. Each living unit has its own lounge, dining room, kitchen, bathrooms and en-suite facilities. Externally we have a large south facing garden with space for playing games and also a number of picnic tables allowing for summer entertaining.

In conjunction with the other local Cygnet residential services, we have some fantastic projects that residents can attend regularly including local bakery, horticultural projects, with on-site textile projects for residents. These projects introduce vocational and learning activities designed to give residents the opportunity to learn valuable skills and develop confidence.

Individuals may come to Beacon House for many reasons. They may be moving through their care pathway from a hospital setting or may require extra support during a difficult period in their life, or they could be on a pathway to a place of their own.



Employment projects, such as bakery, textile and gardening work to help deliver meaningful activities



Specialist training delivered to staff tailored to the needs of the residents, e.g. dementia training



Individuals can be supported to attend **local colleges** should they wish to



Promote family involvement as much as possible



Our community links:

- > Cafés, restaurants and gastropubs
- > Local colleges & libraries
- > Leisure and sporting facilities nearby
- > Cinema, bowling and other leisure facilities
- > Beautiful parks and countryside on the doorstep
- > Great public transport links
- > Barbers and hairdressers



Click the buttons to find out more about our Learning Disability Social Care Services

Introduction

Our Model of Support - Residential Services

Views from Residents, Carers, Families and Friends

Residential Services with Nursing

Residential Services

4, 5, 7 The Sycamores, Derbyshire
Adele Cottages, Nottinghamshire
Beacon House, West Yorkshire
Beckly, West Yorkshire
Bryn Y Wawr, Carmarthenshire
Chaseways, Hertfordshire
Cherry Tree House, Nottinghamshire
Clynsaer, Carmarthenshire
Conifers, Derbyshire
Dene Brook, South Yorkshire
Dove Valley Mews, South Yorkshire
Ducks Halt, Essex
Fairways, Suffolk
Gables, Essex
Gledholt, West Yorkshire
Hansa Lodge, Essex
Hawkstone, West Yorkshire
Kirkside House, West Yorkshire
Kirkside Lodge, West Yorkshire
Langdale House, West Yorkshire
Longfield, West Yorkshire
Lowry House, Lancashire
Norcott House, West Yorkshire
Norcott Lodge, West Yorkshire
Outwood, West Yorkshire
Oxley Woodhouse, West Yorkshire
Redlands, County Durham
Shear Meadow, Hertfordshire
The Fields, South Yorkshire
The Old Vicarage, Berkshire
The Orchards, Essex
Thornfield House, West Yorkshire
Trinity Lodge, Lockerbie
Walkern Lodge, Hertfordshire
Woodrow House, Cheshire

Supported Living Services

Specialist Day Services

Oakview Services

Case Study

Map

How to Make a Referral



Beckly, West Yorkshire

56 Cooper Lane, Shelf, Halifax, West Yorkshire, Yorkshire & Humber HX3 7RG

Residential Services



18+ years



Mixed Gender



12 placements in 3 self-contained living units

Beckly is a specialist residential service in Halifax, West Yorkshire, supporting individuals with learning disabilities, autism, complex needs and behaviours that may challenge.

The service is split into Beckly House and Beckly Lodge. **Beckly House** has 8 en-suite bedrooms, 3 of which are on the ground floor and are suitable for individuals with mobility issues. In addition they have communal living areas including a lounge, dining room, a conservatory and activity space. **Beckly Lodge** is two 2-bed units, each with their own en-suite toilets. One of the units has a shared living space for 2 individuals in a large open plan area whilst the second 2-bed unit has separate lounges for the individuals who live there. Externally there is a large garden with plenty of space for outdoor activities, sports, barbeques and parties.

Beckly is located in the village of Shelf, which is in-between the cities of Halifax and Bradford. In a great location, steeped with history, the service is close to many community facilities, fantastic nature walks and good transport links. The residents are encouraged to be involved in the local community as much or as little as they wish to be.

In conjunction with the other local Cygnet residential services, we have some fantastic projects that residents can attend regularly including bakery, textiles and horticultural work. These projects introduce vocational and learning activities designed to give residents the opportunity to learn valuable skills and develop confidence in a safe and familiar environment.

Bakery project

– individuals are taught how to make cakes and other sweet treats, whilst also learning about the safety aspects of a kitchen



Gardening project

– learning how to grow produce of their own in a vegetable patch



Textiles project – giving individuals the opportunity to learn to sew and create new things each week



Our community links:

- > Cafés and restaurants
- > Local colleges & libraries
- > Beauty salons
- > Theatres and cinemas
- > Bowling and other leisure facilities
- > Beautiful parks and countryside on the doorstep
- > Great public transport links



Click the buttons to find out more about our Learning Disability Social Care Services

Introduction

Our Model of Support - Residential Services

Views from Residents, Carers, Families and Friends

Residential Services with Nursing

Residential Services

4, 5, 7 The Sycamores, Derbyshire

Adele Cottages, Nottinghamshire

Beacon House, West Yorkshire

Beckly, West Yorkshire

Bryn Y Wawr, Carmarthenshire

Chaseways, Hertfordshire

Cherry Tree House, Nottinghamshire

Clynsaer, Carmarthenshire

Conifers, Derbyshire

Dene Brook, South Yorkshire

Dove Valley Mews, South Yorkshire

Ducks Hall, Essex

Fairways, Suffolk

Gables, Essex

Gledholt, West Yorkshire

Hansa Lodge, Essex

Hawkstone, West Yorkshire

Kirkside House, West Yorkshire

Kirkside Lodge, West Yorkshire

Langdale House, West Yorkshire

Longfield, West Yorkshire

Lowry House, Lancashire

Norcott House, West Yorkshire

Norcott Lodge, West Yorkshire

Outwood, West Yorkshire

Oxley Woodhouse, West Yorkshire

Redlands, County Durham

Shear Meadow, Hertfordshire

The Fields, South Yorkshire

The Old Vicarage, Berkshire

The Orchards, Essex

Thornfield House, West Yorkshire

Trinity Lodge, Lockerbie

Walkern Lodge, Hertfordshire

Woodrow House, Cheshire

Supported Living Services

Specialist Day Services

Oakview Services

Case Study

Map

How to Make a Referral



Bryn Y Wawr, Carmarthenshire

6 New Road, Llandeilo, Carmarthenshire SA19 6DB

Residential Services



18+ years



Mixed
Gender



10 placements

Bryn Y Wawr is a specialist residential service, supporting adults with learning disabilities who may have behaviours that challenge and with associated complex needs. We provide specialist care and support that is tailored to individual needs, promoting independence and community integration.

We encourage and enable our residents to lead a full and happy life and work with them to find out their strengths, abilities and preferences to ensure we can offer person-centred care and support.

Bryn y Wawr sits within an acre of secluded land that offers our residents an ideal blend of connecting with nature while also being in close proximity to local amenities.

Additionally the home provides many activities including a covered courtyard garden room which houses a hydrotherapy pool, a large activities cabin for arts and craft projects and learning, a fully equipped gym, two well equipped lounges providing games consoles and a large garden with a polytunnel and vegetable patches providing opportunities for growing flowers, fruit and vegetables.

Our resident profile:

- > Adults from the age of 18+ years
- > Individuals with a primary diagnosis of learning disability accompanied with behaviours that challenge including mental illness or a forensic background
- > Individuals with a secondary diagnosis of personality disorder or autism
- > May have communication challenges
- > May have associated complex needs



Click the buttons to find out more about our Learning Disability Social Care Services

Introduction

Our Model of Support - Residential Services

Views from Residents, Carers, Families and Friends

Residential Services with Nursing

Residential Services

4, 5, 7 The Sycamores, Derbyshire
Adele Cottages, Nottinghamshire
Beacon House, West Yorkshire
Beckly, West Yorkshire
Bryn Y Wawr, Carmarthenshire
Chaseways, Hertfordshire
Cherry Tree House, Nottinghamshire
Clynsaer, Carmarthenshire
Conifers, Derbyshire
Dene Brook, South Yorkshire
Dove Valley Mews, South Yorkshire
Ducks Halt, Essex
Fairways, Suffolk
Gables, Essex
Gledholt, West Yorkshire
Hansa Lodge, Essex
Hawkstone, West Yorkshire
Kirkside House, West Yorkshire
Kirkside Lodge, West Yorkshire
Langdale House, West Yorkshire
Longfield, West Yorkshire
Lowry House, Lancashire
Norcott House, West Yorkshire
Norcott Lodge, West Yorkshire
Outwood, West Yorkshire
Oxley Woodhouse, West Yorkshire
Redlands, County Durham
Shear Meadow, Hertfordshire
The Fields, South Yorkshire
The Old Vicarage, Berkshire
The Orchards, Essex
Thornfield House, West Yorkshire
Trinity Lodge, Lockerbie
Walkern Lodge, Hertfordshire
Woodrow House, Cheshire

Supported Living Services

Specialist Day Services

Oakview Services

Case Study

Map

How to Make a Referral



Chaseways, Hertfordshire

Chaseways, Sawbridgeworth, Hertfordshire, East CM21 0AS

Residential Services



18+ years



Mixed Gender



6 placements in 3 self-contained living units

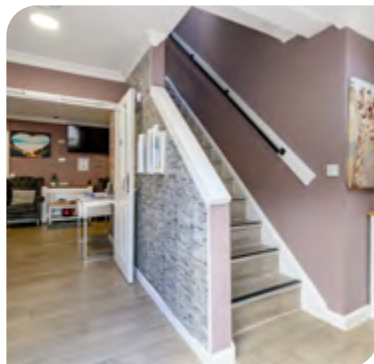
Located in the heart of the community in Sawbridgeworth, Chaseways is a residential service providing outcome focused care for adults with moderate / severe learning disabilities, who may have behaviours that challenge and associated complex needs.

Chaseways is a six bed home consisting of three, two bed flats. Each flat has a kitchen, laundry facilities and garden for the two individuals to share, as well as their own separate lounges, bedrooms and en-suite bathrooms.

The home is within walking distance of local amenities including colleges and work opportunities and is easily accessible by both road and rail, Harlow Mill Station is just over a mile away.

At Chaseways we have experience in supporting individuals who have had multiple placement breakdowns. We work with each resident to ensure that their life is filled with things that they enjoy, whilst also supporting them to develop their life skills to enable them to live independently.

We understand that the relationships our residents have with their family and friends are very important and integral to their well-being. Therefore we ensure that we enable the individual to stay in touch with loved ones and help facilitate home visits.



Our community links:

- > Shopping centres
- > Cinemas
- > Restaurants, pubs & cafés
- > Local village amenities
- > Walks along the canal
- > Good public transport
- > Trampolining
- > Bowling
- > Wall climbing
- > Leisure centres

Ensuring meaningful involvement by working inclusively, collaboratively and in genuine partnership



Supporting individuals to enhance their skills and their social circles



Weekly person-centred meal planning including shopping and cooking



"I would like to say how much I appreciate how much work all the staff have put into the support of my son since he arrived. I believe the staff are managing him very well and his behaviour has improved beyond measure. Whenever I visit I can see that he is happy and has a genuine rapport with the staff and for that I am very grateful." **Parent**



Click the buttons to find out more about our Learning Disability Social Care Services

Introduction

Our Model of Support - Residential Services

Views from Residents, Carers, Families and Friends

Residential Services with Nursing

Residential Services

4, 5, 7 The Sycamores, Derbyshire
Adele Cottages, Nottinghamshire
Beacon House, West Yorkshire
Beckly, West Yorkshire
Bryn Y Wawr, Carmarthenshire
Chaseways, Hertfordshire
Cherry Tree House, Nottinghamshire
Clynsaer, Carmarthenshire
Conifers, Derbyshire
Dene Brook, South Yorkshire
Dove Valley Mews, South Yorkshire
Ducks Hall, Essex
Fairways, Suffolk
Gables, Essex
Gledholt, West Yorkshire
Hansa Lodge, Essex
Hawkstone, West Yorkshire
Kirkside House, West Yorkshire
Kirkside Lodge, West Yorkshire
Langdale House, West Yorkshire
Longfield, West Yorkshire
Lowry House, Lancashire
Norcott House, West Yorkshire
Norcott Lodge, West Yorkshire
Outwood, West Yorkshire
Oxley Woodhouse, West Yorkshire
Redlands, County Durham
Shear Meadow, Hertfordshire
The Fields, South Yorkshire
The Old Vicarage, Berkshire
The Orchards, Essex
Thornfield House, West Yorkshire
Trinity Lodge, Lockerbie
Walkern Lodge, Hertfordshire
Woodrow House, Cheshire

Supported Living Services

Specialist Day Services

Oakview Services

Case Study

Map

How to Make a Referral



Cherry Tree House, Nottinghamshire

Park Hall Road, Mansfield Woodhouse, Nottinghamshire, East Midlands NG19 8QX

Residential Services



18+ years



Mixed Gender



6 placements

Cherry Tree House is a specialist residential service in Mansfield Woodhouse, Nottinghamshire, supporting individuals with learning disabilities, autism, complex needs and behaviours that may challenge.

Cherry Tree House offers six self-contained apartments, configured to meet the needs of the residents in single occupancy accommodation offering them the next step along their care pathway towards greater independence. Each apartment has its own bedroom, living and dining space, bathroom and kitchen. The ground floor apartments have their own garden as well as being able to share the larger communal garden with upstairs apartments.

Located down a quiet lane, just a 10 minute drive from the bustling town of Mansfield, the individuals supported at Cherry Tree House have access to a large and varied range of community facilities and activities, including cinemas, bowling and local events.

Ongoing assessment and a core staff team means that we are able to meet the changing needs of individuals as they progress through their care pathway, while ensuring their safety is maintained and their independence is supported.

We ensure day-to-day practice is embedded in an overarching framework of support whereby the whole team around the person consciously takes into account the interaction, communication and flexibility of each individual we support. We provide a comprehensive individually tailored care and support plan that is delivered by the staff team in an integrated, systematic and consistent manner.



Our community links:

- > Whitepost Farm
- > Mansfield Museum and Art Gallery
- > Sherwood Pines
- > Rufford Abbey Park
- > Water Meadow Leisure Centre
- > Retail parks and local shops
- > Cinemas and bowling alleys
- > Restaurants, pubs and cafés
- > Alton Towers



Resident produces own newsletter for other residents to read called 'Cherry Tree Chatterbox'



Excellent location with easy access to Mansfield town and Nottingham



Achieved the Dignity in Care Award



Supporting individuals to fulfil their potential and achieving a meaningful life



"This is the best care that my son has received in his lifetime." **Parent**



Click the buttons to find out more about our Learning Disability Social Care Services

Introduction

Our Model of Support - Residential Services

Views from Residents, Carers, Families and Friends

Residential Services with Nursing

Residential Services

4, 5, 7 The Sycamores, Derbyshire
Adele Cottages, Nottinghamshire
Beacon House, West Yorkshire
Beckly, West Yorkshire
Bryn Y Wawr, Carmarthenshire
Chaseways, Hertfordshire
Cherry Tree House, Nottinghamshire
Clynsaer, Carmarthenshire
Conifers, Derbyshire
Dene Brook, South Yorkshire
Dove Valley Mews, South Yorkshire
Ducks Halt, Essex
Fairways, Suffolk
Gables, Essex
Gledholt, West Yorkshire
Hansa Lodge, Essex
Hawkstone, West Yorkshire
Kirkside House, West Yorkshire
Kirkside Lodge, West Yorkshire
Langdale House, West Yorkshire
Longfield, West Yorkshire
Lowry House, Lancashire
Norcott House, West Yorkshire
Norcott Lodge, West Yorkshire
Outwood, West Yorkshire
Oxley Woodhouse, West Yorkshire
Redlands, County Durham
Shear Meadow, Hertfordshire
The Fields, South Yorkshire
The Old Vicarage, Berkshire
The Orchards, Essex
Thornfield House, West Yorkshire
Trinity Lodge, Lockerbie
Walkern Lodge, Hertfordshire
Woodrow House, Cheshire
Supported Living Services
Specialist Day Services
Oakview Services
Case Study
Map
How to Make a Referral



Clynsaer, Carmarthenshire

Cynghordy, Llandovery, Carmarthenshire SA20 0LP

Residential Services



18+ years



Mixed Gender



10 placements

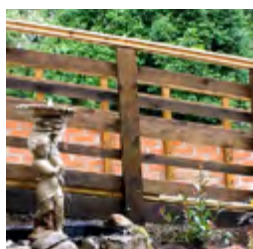
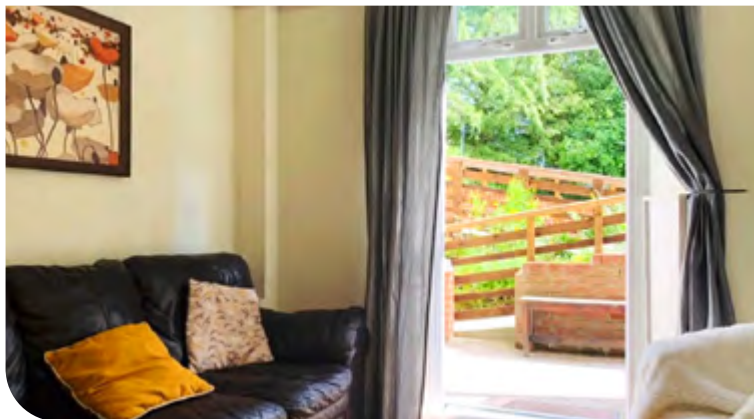
Clynsaer is a specialist residential service, supporting adults with learning disabilities who may have behaviours that challenge and with associated complex needs. We provide specialist care and support that is tailored to individual needs, promoting independence and community integration.

We encourage and enable our residents to lead a full and happy life and work with them to find out their strengths, abilities and preferences to ensure we can offer person-centred care and support.

Situated in over three acres of land, surrounded by farm and woodland, Clynsaer offers a welcoming, homely environment. The residential service has an onsite Day Centre, where residents are able to develop individual skills, whilst improving their self-esteem and social opportunities.

Our resident profile:

- Adults from the age of 18+ years
- Individuals with a primary diagnosis of learning disability accompanied with behaviours that challenge including mental illness or a forensic background
- Individuals with a secondary diagnosis of personality disorder or autism
- May have communication challenges
- May have associated complex needs



Click the buttons to find out more about our Learning Disability Social Care Services

Introduction

Our Model of Support - Residential Services

Views from Residents, Carers, Families and Friends

Residential Services with Nursing

Residential Services

4, 5, 7 The Sycamores, Derbyshire
 Adele Cottages, Nottinghamshire
 Beacon House, West Yorkshire
 Beckly, West Yorkshire
 Bryn Y Wawr, Carmarthenshire
 Chaseways, Hertfordshire
 Cherry Tree House, Nottinghamshire
 Clynsaer, Carmarthenshire
 Conifers, Derbyshire
 Dene Brook, South Yorkshire
 Dove Valley Mews, South Yorkshire
 Ducks Hall, Essex
 Fairways, Suffolk
 Gables, Essex
 Gledholt, West Yorkshire
 Hansa Lodge, Essex
 Hawkstone, West Yorkshire
 Kirkside House, West Yorkshire
 Kirkside Lodge, West Yorkshire
 Langdale House, West Yorkshire
 Longfield, West Yorkshire
 Lowry House, Lancashire
 Norcott House, West Yorkshire
 Norcott Lodge, West Yorkshire
 Outwood, West Yorkshire
 Oxley Woodhouse, West Yorkshire
 Redlands, County Durham
 Shear Meadow, Hertfordshire
 The Fields, South Yorkshire
 The Old Vicarage, Berkshire
 The Orchards, Essex
 Thornfield House, West Yorkshire
 Trinity Lodge, Lockerbie
 Walkern Lodge, Hertfordshire
 Woodrow House, Cheshire

Supported Living Services

Specialist Day Services

Oakview Services

Case Study

Map

How to Make a Referral



Conifers, Derbyshire

1 Central Avenue, Borrowash, Derby, Derbyshire, East Midlands DE72 3JZ

Residential Services



18+ years



Mixed Gender



7 placements

Conifers is a specialist residential home providing outcome focused care for adults with a primary diagnosis of profound to moderate learning disability and autism with associated complex needs. We aim to provide a safe, comfortable and effective environment, promoting independence and community integration. Person-centred planning is at the heart of everything we do, based on each person's specific needs. We understand that consistency and continuity of care is important for the individuals we support.

Conifers is a seven bed home with en-suite bedrooms located on the ground floor, enabling the team to support individuals who may be in a wheelchair.

The home is situated in a leafy village close to local amenities. Derby City Centre is 4 miles away and Nottingham City Centre is 14 miles away. Conifers is easily accessible due to good road and rail links.

As part of our care pathway, Conifers enables each individual to build upon their skills to achieve further independence, self-advocacy and confidence, leading to better quality of life.

Our team supports individuals in creating person-centred activity planners and developing daily living skills both inside the home and out in the community. Our staff use least restrictive practice approaches and are trained in specialised intervention techniques and sensory integration strategies.

We offer a wide variety of activities for individuals to choose from, including, community outings, sensory therapy, 1:1 activities or simply relaxing indoors listening to music.



Our facilities:

- > En-suite bedrooms
- > Hoist, specialist beds
- > Spacious communal areas
- > Lounge
- > Outside spaces including a sensory garden & conservatory
- > Laundry facilities
- > Recreational and arts facilities
- > Wheelchair accessible rooms

Our community links:

- > Elvaston Castle Country Park
- > Pride Park Stadium
- > Derbion Shopping Centre
- > Nottingham Forest Football Club
- > Places of worship
- > Local shops, cafés and restaurants
- > Supermarkets
- > Good road and rail network

Monthly pet therapy



Sessions with music tutor



Independent advocate attends the service



Community activities based on each individual's interests



"What a great job all the staff do at Conifers, we really appreciate all you do." Family member



Click the buttons to find out more about our Learning Disability Social Care Services

Introduction

Our Model of Support - Residential Services

Views from Residents, Carers, Families and Friends

Residential Services with Nursing

Residential Services

4, 5, 7 The Sycamores, Derbyshire
Adele Cottages, Nottinghamshire
Beacon House, West Yorkshire
Beckly, West Yorkshire
Bryn Y Wawr, Carmarthenshire
Chaseways, Hertfordshire
Cherry Tree House, Nottinghamshire
Clynsaer, Carmarthenshire
Conifers, Derbyshire
Dene Brook, South Yorkshire
Dove Valley Mews, South Yorkshire
Ducks Halt, Essex
Fairways, Suffolk
Gables, Essex
Gledholt, West Yorkshire
Hansa Lodge, Essex
Hawkstone, West Yorkshire
Kirkside House, West Yorkshire
Kirkside Lodge, West Yorkshire
Langdale House, West Yorkshire
Longfield, West Yorkshire
Lowry House, Lancashire
Norcott House, West Yorkshire
Norcott Lodge, West Yorkshire
Outwood, West Yorkshire
Oxley Woodhouse, West Yorkshire
Redlands, County Durham
Shear Meadow, Hertfordshire
The Fields, South Yorkshire
The Old Vicarage, Berkshire
The Orchards, Essex
Thornfield House, West Yorkshire
Trinity Lodge, Lockerbie
Walkern Lodge, Hertfordshire
Woodrow House, Cheshire

Supported Living Services

Specialist Day Services

Oakview Services

Case Study

Map

How to Make a Referral



Dene Brook, South Yorkshire

Dalton Lane, Dalton Parva, Rotherham, South Yorkshire, Yorkshire & Humber S65 3QQ

Residential Services



18+ years



Mixed Gender



14 placements in 7 self-contained living units

Dene Brook is a specialist residential service in Rotherham, South Yorkshire, supporting individuals with learning disabilities, complex needs, autism and behaviours that may challenge.

We encourage and enable the individuals we support to lead a full and happy life. We work with them to ensure they have more choice and control in their lives. We find out their strengths, abilities and preferences so that the care provided can be as person-centred and meaningful to each individual as possible.

Dene Brook is split into 8 apartments allowing individuals to live either on their own or in small groups. We have two 3-bed placements, two 2-bed placements and four 1-bed placements, one of which is located in the grounds of Dene Brook and has its own garden and front door. Each of the apartments have a lounge, kitchen and dining facilities and the shared units all have en-suite toilets with a shared bathroom. In addition we also have an activity room, laundry room and a sensory room for all residents to access. Externally we have a patio area and an extensive secure grassed garden with plenty of space for playing games/sports and a seating area allowing for summer entertaining.

Dene Brook is located in Dalton Parva, a lovely village in the suburbs of Rotherham. At the end of the road there are buses that take you direct to either Rotherham or Sheffield where there is an abundance of community facilities that you would expect from a major town or city. Locally in the village we are not short on things to do, there are local shops, pubs, cafes and some beautiful countryside. The residents are encouraged to be involved in the local community as much or as little as they wish to be.

In conjunction with the other local Cygnet residential services, we have some great projects that residents can attend regularly including bakery, gardening, and textiles projects.

Our community links:

- > Great public transport links to major local towns and cities
- > Countryside walks
- > Retail parks and local shops
- > Cinemas and bowling alleys
- > Restaurants, pubs and cafés



Residents meetings take place monthly, with pictorial easy read minutes displayed in the service



**Person-centred
keyworker allocation**
– staff and resident interests
are matched



**Regular
themed
days
and parties**



"Wanted to thank you for all the hard work and support during the difficult times that we have had, always supportive and show genuine care for the residents." Family member



Click the buttons to find out more about our Learning Disability Social Care Services

Introduction

Our Model of Support - Residential Services

Views from Residents, Carers, Families and Friends

Residential Services with Nursing

Residential Services

4, 5, 7 The Sycamores, Derbyshire
Adele Cottages, Nottinghamshire
Beacon House, West Yorkshire
Beckly, West Yorkshire
Bryn Y Wawr, Carmarthenshire
Chaseways, Hertfordshire
Cherry Tree House, Nottinghamshire
Clynsaer, Carmarthenshire
Conifers, Derbyshire
Dene Brook, South Yorkshire
Dove Valley Mews, South Yorkshire
Ducks Hall, Essex
Fairways, Suffolk
Gables, Essex
Gledholt, West Yorkshire
Hansa Lodge, Essex
Hawkstone, West Yorkshire
Kirkside House, West Yorkshire
Kirkside Lodge, West Yorkshire
Langdale House, West Yorkshire
Longfield, West Yorkshire
Lowry House, Lancashire
Norcott House, West Yorkshire
Norcott Lodge, West Yorkshire
Outwood, West Yorkshire
Oxley Woodhouse, West Yorkshire
Redlands, County Durham
Shear Meadow, Hertfordshire
The Fields, South Yorkshire
The Old Vicarage, Berkshire
The Orchards, Essex
Thornfield House, West Yorkshire
Trinity Lodge, Lockerbie
Walkern Lodge, Hertfordshire
Woodrow House, Cheshire

Supported Living Services

Specialist Day Services

Oakview Services

Case Study

Map

How to Make a Referral



Dove Valley Mews, South Yorkshire

75 Park Street, Wombwell, Barnsley, South Yorkshire, Yorkshire & Humber S73 0HL

Residential Services



18+ years



Mixed Gender



6 placements in 3 living units

Dove Valley Mews is a residential service providing outcome focused care for adults with a learning disability, autism and associated complex needs who may have behaviours that challenge.

We encourage and enable the individuals we support to lead a full and happy life. We work with them to ensure they have more choice and control in their lives. We find out their strengths, abilities and preferences so that the care provided can be as person-centred and meaningful to each individual as possible.

Dove Valley Mews is based five miles away from Barnsley town centre in the suburb of Wombwell. Dove Valley Mews offers three apartments, a three, two and one bed apartment, totalling 6 beds. These are configured to meet the needs of the residents which includes communal living areas and an enclosed outdoor garden.

Promoting an individual's independence is very important at Dove Valley Mews, so we ensure that we have a robust transition plan in place so that we can focus on the needs of that individual. The team ensure that the support provided is person-centred to each resident. Everything we do is catered around their needs, whether that be going out on an excursion, visiting their families or perhaps even making their own cup of tea.



Our facilities:

- > Six en-suite bedrooms
- > Kitchen, lounge and dining facilities
- > Garden with outdoor seating
- > Suitable for wheelchair users

Our community links:

- > Bowling
- > Cinemas
- > Shopping
- > Barnsley Town Centre
- > Parks
- > Barnsley Metrodome Water Park
- > The Botanical Gardens
- > Leisure Centres



A homely environment with 24 hours support

Supporting individuals to devise their own activity timetable schedules



Supporting individuals to enhance their skills and their social circles



Large garden suitable for entertaining



Click the buttons to find out more about our Learning Disability Social Care Services

Introduction

Our Model of Support - Residential Services

Views from Residents, Carers, Families and Friends

Residential Services with Nursing

Residential Services

- 4, 5, 7 The Sycamores, Derbyshire
- Adele Cottages, Nottinghamshire
- Beacon House, West Yorkshire
- Beckly, West Yorkshire
- Bryn Y Wawr, Carmarthenshire
- Chaseways, Hertfordshire
- Cherry Tree House, Nottinghamshire
- Clynsaer, Carmarthenshire
- Conifers, Derbyshire
- Dene Brook, South Yorkshire
- Dove Valley Mews, South Yorkshire
- Ducks Halt, Essex
- Fairways, Suffolk
- Gables, Essex
- Gledholt, West Yorkshire
- Hansa Lodge, Essex
- Hawkstone, West Yorkshire
- Kirkside House, West Yorkshire
- Kirkside Lodge, West Yorkshire
- Langdale House, West Yorkshire
- Longfield, West Yorkshire
- Lowry House, Lancashire
- Norcott House, West Yorkshire
- Norcott Lodge, West Yorkshire
- Outwood, West Yorkshire
- Oxley Woodhouse, West Yorkshire
- Redlands, County Durham
- Shear Meadow, Hertfordshire
- The Fields, South Yorkshire
- The Old Vicarage, Berkshire
- The Orchards, Essex
- Thornfield House, West Yorkshire
- Trinity Lodge, Lockerbie
- Walkern Lodge, Hertfordshire
- Woodrow House, Cheshire
- Supported Living Services
- Specialist Day Services
- Oakview Services
- Case Study
- Map
- How to Make a Referral



Ducks Halt, Essex

8 Walton Road, Kirby-le-Soken, Essex, East CO13 0DU

Residential Services



18+ years



Mixed Gender



5 placements

Based in the picturesque village of Kirby-le-Soken, Essex, Ducks Halt supports adults who are living with a learning disability and complex needs, including individuals who may have additional mental and physical health needs, and behaviours that may challenge.

At **Ducks Halt**, each individual we support is unique, they have their own goals, needs and interests. We work with each resident to ensure that their life is filled with activities that they enjoy, whilst also supporting them to develop their life skills to enable them to live independently. We encourage and enable the individuals we support to lead a full and happy life.

Ducks Halt is a detached bungalow in a beautiful small village in Essex, which has a couple of pubs along with a village shop and post office. Just two miles away is Walton-on-the-Naze where the residents regularly visit and make the most of the facilities in a typical seaside town. Nearby there are plenty of community facilities for individuals to access, including shops, colleges, a swimming pool and local parks. Ducks Halt has 2 vehicles for the staff to take the residents out on day trips. Clacton and Colchester are a short journey away, providing an extensive array of activities and places to visit.

Ducks Halt is homely and we support residents to personalise and decorate their room as they would like it to be. The service has relaxing living areas and a kitchen to prepare drinks, food and snacks for themselves or their visitors. There is a large garden with a seating area and space for gardening and other outdoor interests, including hosting parties.

We understand that the relationships our residents have with their family and friends are very important and integral to their well-being. Therefore we ensure that we enable the individual to stay in touch with loved ones and can facilitate home visits.



Our facilities:

- > 5 bedroom, some of which are en-suite
- > Lounge
- > Dining room
- > Kitchen
- > Large garden with seating area, raised beds for gardening and space for outdoor activities

Our community links:

- > Beaches including the pier and funfair
- > Leisure centres
- > Colchester zoo
- > Shopping centres
- > Restaurants and cafés
- > Local spa
- > Bowling
- > Excellent transport links

Promote family involvement and facilitate home visits



Residents attend Adult Learning College for various life skills courses



Supporting residents to step-down along their pathway to supported living



"I get to pick out my own menus for what I want to cook and eat."
Resident



Click the buttons to find out more about our Learning Disability Social Care Services

Introduction

Our Model of Support - Residential Services

Views from Residents, Carers, Families and Friends

Residential Services with Nursing

Residential Services

4, 5, 7 The Sycamores, Derbyshire
Adele Cottages, Nottinghamshire
Beacon House, West Yorkshire
Beckly, West Yorkshire
Bryn Y Wawr, Carmarthenshire
Chaseways, Hertfordshire
Cherry Tree House, Nottinghamshire
Clynsaer, Carmarthenshire
Conifers, Derbyshire
Dene Brook, South Yorkshire
Dove Valley Mews, South Yorkshire
Ducks Halt, Essex
Fairways, Suffolk
Gables, Essex
Gledholt, West Yorkshire
Hansa Lodge, Essex
Hawkstone, West Yorkshire
Kirkside House, West Yorkshire
Kirkside Lodge, West Yorkshire
Langdale House, West Yorkshire
Longfield, West Yorkshire
Lowry House, Lancashire
Norcott House, West Yorkshire
Norcott Lodge, West Yorkshire
Outwood, West Yorkshire
Oxley Woodhouse, West Yorkshire
Redlands, County Durham
Shear Meadow, Hertfordshire
The Fields, South Yorkshire
The Old Vicarage, Berkshire
The Orchards, Essex
Thornfield House, West Yorkshire
Trinity Lodge, Lockerbie
Walkern Lodge, Hertfordshire
Woodrow House, Cheshire

Supported Living Services

Specialist Day Services

Oakview Services

Case Study

Map

How to Make a Referral



Fairways, Suffolk

4 Fullers Field, Swan Lane, Westerfield, Ipswich, Suffolk, East IP6 9AX

Residential Services



18+ years



Mixed Gender



8 placements

Located in a beautiful Suffolk village, Fairways is a specialist residential service supporting adults with learning disabilities and associated complex needs who may have behaviours that challenge. The home provides longer term placements for individuals who require round the clock care and support. Person-centred planning is at the heart of everything we do, based on each individual's specific need.

Fairways is an 8 bed residential service for adults with learning disabilities, associated complex needs and who may have behaviours that challenge. We provide longer term placements for adults who require a supportive home, with round the clock care.

There are eight bedrooms, all of which are en-suite. The bedrooms are furnished to a high standard. Residents at Fairways are encouraged to personalise their bedroom to their own taste.

Fairways is situated in the village of Westerfield, 2.2 miles from Ipswich, which is steeped in history and has many amenities and attractions. There is a great variety of shops with two modern shopping centres and a busy high street. Ipswich is a short drive from the local countryside and the quayside is a few minutes from the town centre, where an array of yachts and cruisers are moored.

Our community links:

- > Swimming & Leisure Centre
- > Local day centres
- > Community cafés and hubs
- > Local farms & horse riding
- > Local pubs, restaurants and libraries
- > Drumming therapy
- > Colchester Aqua Springs – for spa and Jacuzzi
- > Bingo
- > New Skills Day Centre

Our facilities:

- > En-suite bedrooms
- > Large enclosed garden
- > Spacious communal areas including lounge and dining room
- > Therapy kitchen and laundry service to support skills development

Person-centred recruitment staff and resident interests are matched



Community meetings residents give thoughts and feedback



Independent advocate attends the service weekly



Large garden suitable for family BBQs and parties



Click the buttons to find out more about our Learning Disability Social Care Services

Introduction

Our Model of Support - Residential Services

Views from Residents, Carers, Families and Friends

Residential Services with Nursing

Residential Services

4, 5, 7 The Sycamores, Derbyshire
Adele Cottages, Nottinghamshire
Beacon House, West Yorkshire
Beckly, West Yorkshire
Bryn Y Wawr, Carmarthenshire
Chaseways, Hertfordshire
Cherry Tree House, Nottinghamshire
Clynsaer, Carmarthenshire
Conifers, Derbyshire
Dene Brook, South Yorkshire
Dove Valley Mews, South Yorkshire
Ducks Halt, Essex
Fairways, Suffolk
Gables, Essex
Gledholt, West Yorkshire
Hansa Lodge, Essex
Hawkstone, West Yorkshire
Kirkside House, West Yorkshire
Kirkside Lodge, West Yorkshire
Langdale House, West Yorkshire
Longfield, West Yorkshire
Lowry House, Lancashire
Norcott House, West Yorkshire
Norcott Lodge, West Yorkshire
Outwood, West Yorkshire
Oxley Woodhouse, West Yorkshire
Redlands, County Durham
Shear Meadow, Hertfordshire
The Fields, South Yorkshire
The Old Vicarage, Berkshire
The Orchards, Essex
Thornfield House, West Yorkshire
Trinity Lodge, Lockerbie
Walkern Lodge, Hertfordshire
Woodrow House, Cheshire

Supported Living Services

Specialist Day Services

Oakview Services

Case Study

Map

How to Make a Referral



Gables, Essex

262 Ipswich Road, Colchester, Essex, East CO4 0ER

Residential Services



18+ years



Mixed Gender



7 placements

Located in the heart of a residential community in Colchester, Gables is a specialist residential service supporting adults with learning disabilities and associated complex needs who may have behaviours that challenge. The home provides longer term placements for individuals who require round the clock care and support. Person-centred planning is at the heart of everything we do, based on each individual's specific need.

Gables has 7 en-suite bedrooms which the residents are encouraged to personalise to their own tastes. There are communal spaces including living areas, a bright dining room and an activities of daily living (ADL) skills kitchen to support skill development. Outside there is large garden which has seating for the residents to relax and entertain family members and also a quieter sensory garden.

The team at Gables are focused on ensuring that residents are part of their local community and can access various opportunities to meet their needs. We understand that consistency and continuity of care is important for the individuals we care for.

The home is situated in Colchester, which is Britain's oldest recorded town. Colchester is now a thriving, modern town with many great attractions including Colchester Zoo and Colchester Castle Museum. Nearby there are has excellent shopping facilities and many amenities for residents. The coast is a short drive away and London is accessible by regular rail links with journeys taking under an hour.



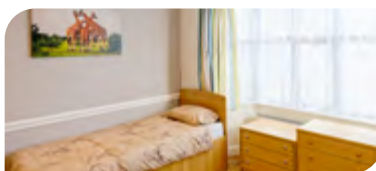
Supporting individuals to access
volunteering opportunities

Our facilities:

- > En-suite bedrooms
- > Spacious communal areas including lounge and dining room
- > Garden with outside seating
- > Therapy kitchen and laundry service to support skills development

Our community links:

- > Gateway College and Wilson Marriage College
- > Colchester United Football Club
- > Voluntary work centres
- > Horticultural community programmes
- > Places of leisure and entertainment
- > Charity partnerships and fund raising initiatives
- > Community environment projects and social outings
- > Local shops, libraries and cinemas



"I feel that this is the best home that he has been at, he is safe, cared for with respect. There is plenty of entertainment, activities and social events and my husband and I are included in everything. It is a very caring environment."

Family member



Click the buttons to find out more about our Learning Disability Social Care Services

Introduction

Our Model of Support - Residential Services

Views from Residents, Carers, Families and Friends

Residential Services with Nursing

Residential Services

4, 5, 7 The Sycamores, Derbyshire

Adele Cottages, Nottinghamshire

Beacon House, West Yorkshire

Beckly, West Yorkshire

Bryn Y Wawr, Carmarthenshire

Chaseways, Hertfordshire

Cherry Tree House, Nottinghamshire

Clynsaer, Carmarthenshire

Conifers, Derbyshire

Dene Brook, South Yorkshire

Dove Valley Mews, South Yorkshire

Ducks Hall, Essex

Fairways, Suffolk

Gables, Essex

Gledholt, West Yorkshire

Hansa Lodge, Essex

Hawkstone, West Yorkshire

Kirkside House, West Yorkshire

Kirkside Lodge, West Yorkshire

Langdale House, West Yorkshire

Longfield, West Yorkshire

Lowry House, Lancashire

Norcott House, West Yorkshire

Norcott Lodge, West Yorkshire

Outwood, West Yorkshire

Oxley Woodhouse, West Yorkshire

Redlands, County Durham

Shear Meadow, Hertfordshire

The Fields, South Yorkshire

The Old Vicarage, Berkshire

The Orchards, Essex

Thornfield House, West Yorkshire

Trinity Lodge, Lockerbie

Walkern Lodge, Hertfordshire

Woodrow House, Cheshire

Supported Living Services

Specialist Day Services

Oakview Services

Case Study

Map

How to Make a Referral



Gledholt, West Yorkshire

32 Greenhead Road, Gledholt, Huddersfield, West Yorkshire HD1 4EZ

Residential Services



18+ years



Mixed Gender



9 placements in 2 self-contained living units

Gledholt is operationally a nurse-led service with both service manager and head of care being qualified nurses. We have an in-house multi-disciplinary team (MDT) who support the residents in our care throughout their journey with us. The team consists of a consultant psychologist, psychology assistant, occupational therapist, occupational therapy assistant, activity co-ordinators, nurses and speech and language therapist. We are able to meet the changing needs of our residents as they progress through their care pathway, while ensuring their safety is maintained and their independence supported.

We have a unique care plan pathway called the Visual Discharge Plan (VDP). This approach involves a collaborative process between the individual, their families, the MDT and staff team. It ensures the person is at the heart of their care and takes into account what's important to them, whilst balancing this with the clinical need. This puts the resident at the heart of their care and also ensures that discharge planning commences at the point of admission.

Gledholt is divided into two living areas, the main house and the coach house. The main house, which is split across three floors, offers seven en-suite bedrooms, communal lounges and a kitchen on each floor to enable the residents to shop for and prepare their own meals. The coach house is a two bedroom unit giving the individuals we support the option to spend time in their own space or in the main house. Externally there are beautiful gardens to the front and rear of the building with raised flower beds, outdoor seating and plenty of space for sports, games and parties.

The service is located in a bustling residential area of Huddersfield, in walking distance to an abundance of community facilities. The residents are encouraged to be involved in the local community as much or as little as they wish to be. We have great links with external agencies, including the police, the mental health enhancement team, local hospitals and many more to ensure that our residents are safe and well supported in the community.

Our community links:

- > Cinemas
- > Local parks
- > Community groups
- > Colleges
- > Shops, cafés and restaurants
- > Sports clubs
- > Great public transport links



Collaborative care planning with external agencies to enhance the experience of accessing the community

Residents are encouraged to cook and prepare their own lunches independently or with staff support



Clinical in-reach work to ensure a safer and smoother transition process both in and out of the service



Residents are supported to attend local colleges for English and Maths skills



Click the buttons to find out more about our Learning Disability Social Care Services

Introduction

Our Model of Support - Residential Services

Views from Residents, Carers, Families and Friends

Residential Services with Nursing

Residential Services

4, 5, 7 The Sycamores, Derbyshire
Adele Cottages, Nottinghamshire
Beacon House, West Yorkshire
Beckly, West Yorkshire
Bryn Y Wawr, Carmarthenshire
Chaseways, Hertfordshire
Cherry Tree House, Nottinghamshire
Clynsaer, Carmarthenshire
Conifers, Derbyshire
Dene Brook, South Yorkshire
Dove Valley Mews, South Yorkshire
Ducks Halt, Essex
Fairways, Suffolk
Gables, Essex
Gledholt, West Yorkshire
Hansa Lodge, Essex
Hawkstone, West Yorkshire
Kirkside House, West Yorkshire
Kirkside Lodge, West Yorkshire
Langdale House, West Yorkshire
Longfield, West Yorkshire
Lowry House, Lancashire
Norcott House, West Yorkshire
Norcott Lodge, West Yorkshire
Outwood, West Yorkshire
Oxley Woodhouse, West Yorkshire
Redlands, County Durham
Shear Meadow, Hertfordshire
The Fields, South Yorkshire
The Old Vicarage, Berkshire
The Orchards, Essex
Thornfield House, West Yorkshire
Trinity Lodge, Lockerbie
Wakern Lodge, Hertfordshire
Woodrow House, Cheshire

Supported Living Services

Specialist Day Services

Oakview Services

Case Study

Map

How to Make a Referral



Hansa Lodge, Essex

58 Farm Road, Rainham, Essex, East RM13 9LG

Residential Services



18+ years



Female



5 placements

Located in Rainham in Essex, Hansa Lodge is a residential service for adults with learning disabilities, who may have behaviours that challenge and associated complex needs.

Each individual we support is unique, they have their own goals, needs and interests. We work with each resident to ensure that their life is filled with activities that they enjoy, whilst also supporting them to develop their life skills to enable them to step-down along their care pathway into supported living.

Hansa Lodge is a spacious and homely detached property on a residential street within walking distance of local amenities. There is also good public transport links close by with Rainham train station just a short drive away.

Within the service there are 5-ensuite bedrooms, 2 lounges, a dining room, kitchen with a separate laundry and a spacious activity room. Externally there is a large garden with plenty of space for outside games and activities as well as a place for individuals to grow their own plants and vegetables.

Our team supports individuals in creating person-centred activity planners and developing daily living skills both inside the home and out in the community. Our staff use least restrictive practice approaches and are trained in specialised intervention techniques and sensory integration strategies.

We offer a wide variety of activities for individuals to choose from, including, community outings, 1:1 activities, regular bingo sessions and any excuse for a themed party in the service.

We understand that the relationships our residents have with their family and friends are very important and integral to their well-being. Therefore we ensure that we enable the individual to stay in touch with loved ones and can facilitate home visits.



Homely environment
with 24/7 support



Wide range of **activities**
chosen by residents



Rated **'Good'**
with the CQC



Supporting residents
on **holidays and**
day trips



"Our daughter has been at Hansa Lodge for 2 years and in that time we have always felt supported by the staff. We are very happy with the care and support our daughter has and are made to feel very welcome when we visit." **Parent**



Click the **buttons** to find out more about our Learning Disability Social Care Services

Introduction

Our Model of Support - Residential Services

Views from Residents, Carers, Families and Friends

Residential Services with Nursing

Residential Services

4, 5, 7 The Sycamores, Derbyshire
Adele Cottages, Nottinghamshire
Beacon House, West Yorkshire
Beckly, West Yorkshire
Bryn Y Wawr, Carmarthenshire
Chaseways, Hertfordshire
Cherry Tree House, Nottinghamshire
Clynsaer, Carmarthenshire
Conifers, Derbyshire
Dene Brook, South Yorkshire
Dove Valley Mews, South Yorkshire
Ducks Hall, Essex
Fairways, Suffolk
Gables, Essex
Gledholt, West Yorkshire
Hansa Lodge, Essex
Hawkstone, West Yorkshire
Kirkside House, West Yorkshire
Kirkside Lodge, West Yorkshire
Langdale House, West Yorkshire
Longfield, West Yorkshire
Lowry House, Lancashire
Norcott House, West Yorkshire
Norcott Lodge, West Yorkshire
Outwood, West Yorkshire
Oxley Woodhouse, West Yorkshire
Redlands, County Durham
Shear Meadow, Hertfordshire
The Fields, South Yorkshire
The Old Vicarage, Berkshire
The Orchards, Essex
Thornfield House, West Yorkshire
Trinity Lodge, Lockerbie
Walkern Lodge, Hertfordshire
Woodrow House, Cheshire

Supported Living Services

Specialist Day Services

Oakview Services

Case Study

Map

How to Make a Referral



Hawkstone, West Yorkshire

Shann Lane, Off Spring Garden Lane, Keighley, West Yorkshire, Yorkshire & Humber BD20 6NA

Residential Services



18+ years



Mixed Gender



10 placements in 2 self-contained living units

Hawkstone is a specialist residential service in Bradford, West Yorkshire, supporting individuals with learning disabilities, autism, complex needs and behaviours that may challenge.

We encourage and enable the individuals we support to lead a full and happy life. We work with them to ensure they have more choice and control in their lives. We find out their strengths, abilities and preferences so that the care provided can be as person-centred and meaningful to each individual as possible.

Hawkstone is split into 2 separate living units, Hawkstone House and Hawkstone Cottage. Hawkstone House is set in a beautiful 19th century building that was originally the Duke of Devonshire's hunting lodge. The building is steeped in history and has a great deal of character including towers and a grand ornate entrance foyer.

Hawkstone House has 6 beds and numerous communal living areas including a lounge, conservatory, dining room, bathroom, kitchen and an activity room. Externally there is a large garden with a trampoline and a swing as well as a more secluded quiet part of the garden towards the rear of the grounds.

Hawkstone Cottage is modern and very homely with 4 en-suite bedrooms as well as a lounge, dining room, kitchen and a lovely seating area in front of the cottage surrounded by beautiful flower beds, making it a perfect location for afternoon tea.

Hawkstone is located in Keighley, which has an abundance of community facilities, fantastic nature walks and good transport links. The residents are encouraged to be involved in the local community as much or as little as they wish to be. In conjunction with the other local Cygnet residential services, we have some great projects that residents can attend regularly including bakery, textiles and horticultural work. These projects introduce vocational and learning activities designed to give residents the opportunity to learn valuable skills and develop confidence.

Our community links:

- > Cliffe Castle Park & Museum
- > Tarn Lake
- > Skipton Castle
- > Bolton Abbey
- > East Riddlesden Hall Trust
- > Bronte museum in Howarth
- > Vintage carriages and Railway museum
- > Keighley Bus Museum
- > Keighley & Worth Valley Steam Railway
- > Keighley Civic Centre & Police museum
- > Local Leisure Centre
- > Library
- > Local shops all within walking distance

Monthly themed nights, movie nights, karaoke nights and games night at the service



"Having known this resident for 25 years this is the most settled and calm I have ever seen her since coming to Hawkstone House."
Community nurse

Residents meetings take place monthly, with pictorial easy read minutes displayed in the service



Click the buttons to find out more about our Learning Disability Social Care Services

Introduction

Our Model of Support - Residential Services

Views from Residents, Carers, Families and Friends

Residential Services with Nursing

Residential Services

4, 5, 7 The Sycamores, Derbyshire
Adele Cottages, Nottinghamshire
Beacon House, West Yorkshire
Beckly, West Yorkshire
Bryn Y Wawr, Carmarthenshire
Chaseways, Hertfordshire
Cherry Tree House, Nottinghamshire
Clynsaer, Carmarthenshire
Conifers, Derbyshire
Dene Brook, South Yorkshire
Dove Valley Mews, South Yorkshire
Ducks Halt, Essex
Fairways, Suffolk
Gables, Essex
Gledholt, West Yorkshire
Hansa Lodge, Essex
Hawkstone, West Yorkshire
Kirkside House, West Yorkshire
Kirkside Lodge, West Yorkshire
Langdale House, West Yorkshire
Longfield, West Yorkshire
Lowry House, Lancashire
Norcott House, West Yorkshire
Norcott Lodge, West Yorkshire
Outwood, West Yorkshire
Oxley Woodhouse, West Yorkshire
Redlands, County Durham
Shear Meadow, Hertfordshire
The Fields, South Yorkshire
The Old Vicarage, Berkshire
The Orchards, Essex
Thornfield House, West Yorkshire
Trinity Lodge, Lockerbie
Walkern Lodge, Hertfordshire
Woodrow House, Cheshire

Supported Living Services

Specialist Day Services

Oakview Services

Case Study

Map

How to Make a Referral





Kirkside House, West Yorkshire

1 Spen Lane, Kirkstall, Leeds, West Yorkshire, Yorkshire & Humber LS5 3EJ

Residential Services



18+ years



Mixed Gender



7 placements in 3 living units

Located in a historical area in Leeds, Kirkside House is a specialist residential service providing outcome focused care for adults with learning disabilities, autism and associated complex needs who may have behaviours that challenge.

There are 3 living areas within **Kirkside House** all supporting individuals who are at different stages in their care pathway. There is a 4 bed unit for individuals to live in small groups with lounge, dining room and kitchen. The service then has a 2 bed ground floor unit, allowing 2 individuals their own space. This part of the service is suitable for individuals who may have physical/mobility issues. Finally, we have a 1 bed bespoke unit for an individual who requires 2-1 care. This unit has its own living space and its own private garden.

Externally there is a large garden which is shared with Kirkside Lodge (also a residential service located in the same grounds). There is plenty of space in the garden for individuals to participate in the horticultural project, where they grow their own vegetables, create hanging baskets, or enjoy the sensory garden and outside space.

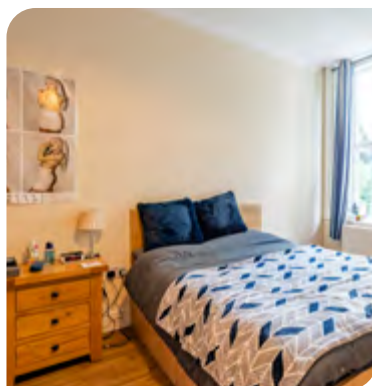
We also host the bakery project, these two projects and a textile project are ran in conjunction with the other local Cygnet residential services. These projects introduce vocational and learning activities designed to give residents the opportunity to learn valuable skills and develop confidence in a safe and familiar environment.

We ensure we involve family or advocates in an individual's care. We have high staffing levels to ensure that we are able to meet the changing needs of the residents as they progress through their care pathway.

The service is in walking distance of community facilities including shopping centres, cafés and leisure centres. It is also only a 1 minute walk from the 800 year old Kirkstall Abbey, where the residents can visit to enjoy the surroundings, learn about the historical ruins or visit the on-site café.

Our community links:

- > Cinemas
- > Local parks
- > Community groups
- > Colleges
- > Shops, cafés and restaurants
- > Sports clubs
- > Great public transport links
- > 20 minutes to Leeds City Centre
- > Excellent transport links and local amenities



Supporting individuals to enhance their social skills



Gardening project - hosted in the large garden where individuals learn how to grow produce



“ I am very lucky that my daughter is living at Kirkside, long may it continue - Family member ”

Easy read and other accessible information available to all residents



Click the buttons to find out more about our Learning Disability Social Care Services

Introduction

Our Model of Support - Residential Services

Views from Residents, Carers, Families and Friends

Residential Services with Nursing

Residential Services

4, 5, 7 The Sycamores, Derbyshire

Adele Cottages, Nottinghamshire

Beacon House, West Yorkshire

Beckly, West Yorkshire

Bryn Y Wawr, Carmarthenshire

Chaseways, Hertfordshire

Cherry Tree House, Nottinghamshire

Clynsaer, Carmarthenshire

Conifers, Derbyshire

Dene Brook, South Yorkshire

Dove Valley Mews, South Yorkshire

Ducks Hall, Essex

Fairways, Suffolk

Gables, Essex

Gledholt, West Yorkshire

Hansa Lodge, Essex

Hawkstone, West Yorkshire

Kirkside House, West Yorkshire

Kirkside Lodge, West Yorkshire

Langdale House, West Yorkshire

Longfield, West Yorkshire

Lowry House, Lancashire

Norcott House, West Yorkshire

Norcott Lodge, West Yorkshire

Outwood, West Yorkshire

Oxley Woodhouse, West Yorkshire

Redlands, County Durham

Shear Meadow, Hertfordshire

The Fields, South Yorkshire

The Old Vicarage, Berkshire

The Orchards, Essex

Thornfield House, West Yorkshire

Trinity Lodge, Lockerbie

Walkern Lodge, Hertfordshire

Woodrow House, Cheshire

Supported Living Services

Specialist Day Services

Oakview Services

Case Study

Map

How to Make a Referral



Kirkside Lodge, West Yorkshire

1 Spen Lane, Kirkstall, Leeds, West Yorkshire, Yorkshire & Humber LS5 3EJ

Residential Services



18+ years



Mixed Gender



8 placements in 4 self-contained living units

Located in a historical area in Leeds, Kirkside Lodge is a specialist residential service providing outcome focused care for adults with learning disabilities, autism and associated complex needs who may have behaviours that challenge.

There are 4 living areas within **Kirkside Lodge**, a 3 bed unit, two 2 bed units and a 1 bed unit. Each unit has its own living space with lounge, dining room, kitchen and en-suite facilities enabling individuals to live as independently as they are able to.

Externally there is a large garden which is shared with Kirkside House (also a residential service located in the same grounds). There is plenty of space in the garden for individuals to participate in the horticultural project where they grow their own vegetables, create hanging baskets, enjoy the sensory garden or even just sit and enjoy the outside space.

In addition at Kirkside, we also host the bakery project, these two projects and a textile project are ran in conjunction with the other local Cygnet residential services. These projects introduce vocational and learning activities designed to give residents the opportunity to learn valuable skills and develop confidence in a safe and familiar environment.

We ensure we involve family or advocates in an individual's care. We have high staffing levels at Kirkside Lodge, this ensures that we are able to meet the changing needs of the residents as they progress through their care pathway.

The service is located in a historical residential area of Leeds, in walking distance to an abundance of community facilities including shopping centres, cafés and leisure centres. It is also only a 1 minute walk from the 800 year old Kirkstall Abbey, where the residents can visit to enjoy the surroundings, learn about the historical ruins or visit the on-site café. The residents are encouraged to be involved in the local community as much or as little as they wish to be.

Our community links:

- > Cinemas
- > Local parks
- > Community groups
- > Colleges
- > Shops, cafés and restaurants
- > Sports clubs
- > Great public transport links
- > 20 minutes to Leeds City Centre
- > Excellent transport links and local amenities

Supporting individuals to enhance their social skills



Focused on **reducing restrictive practice**

Gardening project hosted in the large garden where individuals learn how to grow produce



"We can relax knowing she is happy and so well cared for. We just wanted to say thank you." **Family member**

Good relationship with local CLDT



Click the buttons to find out more about our Learning Disability Social Care Services

Introduction

Our Model of Support - Residential Services

Views from Residents, Carers, Families and Friends

Residential Services with Nursing

Residential Services

4, 5, 7 The Sycamores, Derbyshire
Adele Cottages, Nottinghamshire
Beacon House, West Yorkshire
Beckly, West Yorkshire
Bryn Y Wawr, Carmarthenshire
Chaseways, Hertfordshire
Cherry Tree House, Nottinghamshire
Clynsaer, Carmarthenshire
Conifers, Derbyshire
Dene Brook, South Yorkshire
Dove Valley Mews, South Yorkshire
Ducks Halt, Essex
Fairways, Suffolk
Gables, Essex
Gledholt, West Yorkshire
Hansa Lodge, Essex
Hawkstone, West Yorkshire
Kirkside House, West Yorkshire
Kirkside Lodge, West Yorkshire
Langdale House, West Yorkshire
Longfield, West Yorkshire
Lowry House, Lancashire
Norcott House, West Yorkshire
Norcott Lodge, West Yorkshire
Outwood, West Yorkshire
Oxley Woodhouse, West Yorkshire
Redlands, County Durham
Shear Meadow, Hertfordshire
The Fields, South Yorkshire
The Old Vicarage, Berkshire
The Orchards, Essex
Thornfield House, West Yorkshire
Trinity Lodge, Lockerbie
Walkern Lodge, Hertfordshire
Woodrow House, Cheshire

Supported Living Services

Specialist Day Services

Oakview Services

Case Study

Map

How to Make a Referral



Langdale House, West Yorkshire

56 Gledholt Road, Huddersfield, West Yorkshire, Yorkshire & Humber HD1 4HR

Residential Services



18+ years



Mixed Gender



8 placements

Langdale House is a specialist residential service supporting individuals with learning disabilities, autism, complex needs and behaviours that may challenge in Huddersfield.

Langdale House accommodates up to eight residents and offers spacious communal areas, a dedicated activity room and an enclosed outdoor garden within a homely family-style environment. The service is in a central location opposite a popular community park. Just a 10 minute walk into Huddersfield town centre and with a bus stop outside the house with transport links to all major cities, there is no shortage of community integration.

We believe that it is essential for individual's well-being to have purpose in their day-to-day life and to learn new skills. We have established different work projects to introduce vocational and learning activities where the individuals we support can learn valuable skills and develop confidence.

Ongoing assessments enable us to meet the changing needs of residents as they progress through their care pathway while ensuring their safety is maintained and their independence supported. Regular review meetings involving the resident, their family and professionals are held to review outcomes, set new goals and re-assess support levels as individuals' progress.

Individuals come to Langdale House for different reasons; they may require more support than can be provided in a supported living setting or they may be moving along their care pathway from a hospital placement. Whatever the reason, the team can offer specialist input based on individual need to deliver flexible and effective support.



Our community links:

- > Local cafés, restaurants and pubs
- > Local colleges & libraries
- > Huddersfield town centre –shops, cinema, museums
- > Huddersfield train station with good links to Leeds and Bradford
- > Greenhead Park offers a café, tennis courts, a pond and garden area and hosts regular festivals

Accessible information
available for all residents



Monthly themes parties including different foods and decorations to match the theme selected by the residents

Employment projects, such as bakery, textiles and horticultural work to help deliver meaningful occupation



Person-centred recruitment staff and residents interests are matched



Our facilities:

- > Ensuite bedrooms on the ground and 1st floor
- > 2 lounges
- > Kitchen
- > Dining room
- > Multi-faith room
- > External gardens to the front and rear of the building



Click the buttons to find out more about our Learning Disability Social Care Services

Introduction

Our Model of Support - Residential Services

Views from Residents, Carers, Families and Friends

Residential Services with Nursing

Residential Services

4, 5, 7 The Sycamores, Derbyshire
Adele Cottages, Nottinghamshire
Beacon House, West Yorkshire
Beckly, West Yorkshire
Bryn Y Wawr, Carmarthenshire
Chaseways, Hertfordshire
Cherry Tree House, Nottinghamshire
Clynsaer, Carmarthenshire
Conifers, Derbyshire
Dene Brook, South Yorkshire
Dove Valley Mews, South Yorkshire
Ducks Hall, Essex
Fairways, Suffolk
Gables, Essex
Gledholt, West Yorkshire
Hansa Lodge, Essex
Hawkstone, West Yorkshire
Kirkside House, West Yorkshire
Kirkside Lodge, West Yorkshire
Langdale House, West Yorkshire
Longfield, West Yorkshire
Lowry House, Lancashire
Norcott House, West Yorkshire
Norcott Lodge, West Yorkshire
Outwood, West Yorkshire
Oxley Woodhouse, West Yorkshire
Redlands, County Durham
Shear Meadow, Hertfordshire
The Fields, South Yorkshire
The Old Vicarage, Berkshire
The Orchards, Essex
Thornfield House, West Yorkshire
Trinity Lodge, Lockerbie
Walkern Lodge, Hertfordshire
Woodrow House, Cheshire

Supported Living Services

Specialist Day Services

Oakview Services

Case Study

Map

How to Make a Referral



Longfield House, West Yorkshire

Oakleigh Road, Clayton, Bradford, West Yorkshire, Yorkshire & Humber BD14 6NP

Residential Services



18+ years



Mixed Gender



9 placements in 5 self-contained living units

Located in the friendly village of Clayton in the suburbs of Bradford, Longfield House is a specialist residential service providing outcome focused care for adults with learning disabilities, autism and associated complex needs who may have behaviours that challenge.

Person-centred planning is at the heart of everything we do and we are able to meet the changing needs of our residents as they progress through their care pathway, while ensuring their safety is maintained and their independence supported.

Longfield House consists of 5 different living units, a 5 bed unit and 4 single occupancy flats. The 5 bed unit has communal living spaces with lounge, dining room and kitchen and each resident has their own en-suite facilities. There are then 4 individual flats, one in the main house and 3 in the coach house. These provide the opportunity for individuals to be more independent and live in their space. The flats are also able to be used to support those who require extra support who find it difficult to share space with others. Externally there is a courtyard and a garden with plenty of space for individuals to have BBQ's, garden parties or even just sit and enjoy the outside space.

The service is located on the outskirts of Bradford and has fantastic public transport links into Bradford and Halifax. In addition to the community facilities in the local towns and cities there is also an abundance of community facilities nearby in the village. The residents are encouraged to be involved in the local community as much or as little as they wish to be and there is no shortage of places to visit within walking distance too including parks, farms, pubs and cafés.

In conjunction with the other local Cygnet residential services, we have some great projects that residents can attend regularly including bakery, textiles, horticultural and education. These projects introduce vocational and learning activities designed to give residents the opportunity to learn valuable skills and develop confidence.

Our community links:

- > Cinemas
- > Local parks
- > Colleges
- > Shops, cafés and restaurants
- > Sports clubs
- > Great public transport links
- > Excellent local amenities
- > Community groups, including some for individuals with learning disabilities



Specialist training
delivered to staff
tailored to the needs of
the residents



Individuals can be
supported to attend
local colleges
should they wish to



Supporting individuals to express their views and
**be involved in making
decisions about their care**



"Thank you to everyone at Longfield House for all their hard work, we appreciate that you keep us up to date by sending regular photos of our loved one doing activities." **Family member**



Click the buttons to find out more about our Learning Disability Social Care Services

Introduction

Our Model of Support - Residential Services

Views from Residents, Carers, Families and Friends

Residential Services with Nursing

Residential Services

4, 5, 7 The Sycamores, Derbyshire

Adele Cottages, Nottinghamshire

Beacon House, West Yorkshire

Beckly, West Yorkshire

Bryn Y Wawr, Carmarthenshire

Chaseways, Hertfordshire

Cherry Tree House, Nottinghamshire

Clynsaer, Carmarthenshire

Conifers, Derbyshire

Dene Brook, South Yorkshire

Dove Valley Mews, South Yorkshire

Ducks Halt, Essex

Fairways, Suffolk

Gables, Essex

Gledholt, West Yorkshire

Hansa Lodge, Essex

Hawkstone, West Yorkshire

Kirkside House, West Yorkshire

Kirkside Lodge, West Yorkshire

Langdale House, West Yorkshire

Longfield, West Yorkshire

Lowry House, Lancashire

Norcott House, West Yorkshire

Norcott Lodge, West Yorkshire

Outwood, West Yorkshire

Oxley Woodhouse, West Yorkshire

Redlands, County Durham

Shear Meadow, Hertfordshire

The Fields, South Yorkshire

The Old Vicarage, Berkshire

The Orchards, Essex

Thornfield House, West Yorkshire

Trinity Lodge, Lockerbie

Walkern Lodge, Hertfordshire

Woodrow House, Cheshire

Supported Living Services

Specialist Day Services

Oakview Services

Case Study

Map

How to Make a Referral



Lowry House, Lancashire

Pudding Lane, via Viner Way, Godley, Hyde, North West SK14 3BS

Residential Services



17+ years



Mixed Gender



12 placements in single or dual occupancy apartments

Lowry House is a specialist residential service, supporting adults with learning disabilities, complex needs and behaviours that may challenge, including those with mental health needs.

We provide specialist care and support that is tailored to individual needs, promoting independence and community integration. We encourage and enable the residents to lead a full and happy life and work with them to find out their strengths, abilities and preferences so that their care can be as person-centred as possible.

There are single occupancy and dual occupancy apartments at Lowry House, allowing individuals to live in their own space or with another person. Each apartment has its own lounge, dining room, kitchen and bathroom facilities. The service also has some shared communal space for residents, including a well-equipped gym, games room, activity room and computer suite. Externally there is a nice garden that all residents have access to. The garden has plenty of space for outdoor activities and a vegetable garden where the residents learn how to grow their own produce.

Located in a great location in Hyde, Greater Manchester, the service is close to many community facilities. Major public transport links are on the doorstep and Manchester City Centre is a popular destination as it is just a short bus journey away.

Individuals may come to Lowry House for many reasons. They may be moving through their care pathway from a hospital setting or may require extra support during a difficult period in their life, or they could be on a pathway to a place of their own.

Our community links:

- > Hyde Leisure Pool
- > Country Parks
- > Bowling
- > Cinema
- > Local pubs, cafés & restaurants
- > Wheels for all cycling group
- > Ambitions Social Group



Rated 'Outstanding' in responsive with the CQC

Achieved the Dignity in Care Award



Close links with a number of groups that cater for individuals with learning disabilities, including cycling, football and social groups



"All the staff support me well and listen to all of my concerns and how I wish to be supported." Resident

In-house multi-disciplinary team (MDT) including psychology, speech and language therapy and occupational therapy



Click the buttons to find out more about our Learning Disability Social Care Services

Introduction

Our Model of Support - Residential Services

Views from Residents, Carers, Families and Friends

Residential Services with Nursing

Residential Services

4, 5, 7 The Sycamores, Derbyshire

Adele Cottages, Nottinghamshire

Beacon House, West Yorkshire

Beckly, West Yorkshire

Bryn Y Wawr, Carmarthenshire

Chaseways, Hertfordshire

Cherry Tree House, Nottinghamshire

Clynsaer, Carmarthenshire

Conifers, Derbyshire

Dene Brook, South Yorkshire

Dove Valley Mews, South Yorkshire

Ducks Hall, Essex

Fairways, Suffolk

Gables, Essex

Gledholt, West Yorkshire

Hansa Lodge, Essex

Hawkstone, West Yorkshire

Kirkside House, West Yorkshire

Kirkside Lodge, West Yorkshire

Langdale House, West Yorkshire

Longfield, West Yorkshire

Lowry House, Lancashire

Norcott House, West Yorkshire

Norcott Lodge, West Yorkshire

Outwood, West Yorkshire

Oxley Woodhouse, West Yorkshire

Redlands, County Durham

Shear Meadow, Hertfordshire

The Fields, South Yorkshire

The Old Vicarage, Berkshire

The Orchards, Essex

Thornfield House, West Yorkshire

Trinity Lodge, Lockerbie

Walkern Lodge, Hertfordshire

Woodrow House, Cheshire

Supported Living Services

Specialist Day Services

Oakview Services

Case Study

Map

How to Make a Referral





Norcott House, West Yorkshire

75 Leeds Road, Liversedge, West Yorkshire, Yorkshire & Humber WF15 6JA

Residential Services



18+ years



Mixed Gender



11 placements in 4 self-contained living units

Located in the suburbs of Liversedge, Norcott House is a specialist residential service providing outcome focused care for adults with learning disabilities and associated complex needs who may have behaviours that challenge.

Person-centred planning is at the heart of everything we do and we are able to meet the changing needs of our residents as they progress through their care pathway, while ensuring their safety is maintained and their independence supported.

Norcott House is split into 4 different living units, a 4 bed unit, and 3 bed unit and two 2 bed units. Each unit has its own living space with lounge, dining room, kitchen and en-suite facilities to enable to individuals to live as independently as they are able to. Externally there is a garden with plenty of space for individuals to have BBQ's, garden parties or even just sit and enjoy the outside space.

The service is located in-between Bradford, Leeds and Huddersfield, so with fantastic public transport links there is an abundance of community facilities including shopping centres, cinemas and leisure centres. The residents are encouraged to be involved in the local community as much or as little as they wish to be and there is no shortage of places to visit within walking distance too including parks, pubs and cafés.

In conjunction with the other local Cygnet residential services, we have some great projects that residents can attend regularly including bakery, textiles and gardening work. These projects introduce vocational and learning activities designed to give residents the opportunity to learn valuable skills and develop confidence.

Our community links:

- > Cinemas
- > Local parks
- > Community groups
- > Colleges
- > Shops, cafés and restaurants
- > Sports clubs
- > Great public transport links
- > Excellent local amenities



"I like the staff. I like doing more independent things – making my own dinner, making my own breakfast and drinks" Resident

Good relationship with the Community Learning Disability Team (CLDT)



Accessible information available to all residents

"My son has been a lot happier since moving to Norcott House. I feel he is being cared for properly. I believe that staff listen to parents as well as my son himself. I've got nothing bad to say about Norcott House. My son is more content and clearly feels safe, so this makes me feel content." Family member



Employment projects, such as bakery, textiles and gardening work to help deliver meaningful occupation



Click the buttons to find out more about our Learning Disability Social Care Services

Introduction

Our Model of Support - Residential Services

Views from Residents, Carers, Families and Friends

Residential Services with Nursing

Residential Services

4, 5, 7 The Sycamores, Derbyshire
Adele Cottages, Nottinghamshire
Beacon House, West Yorkshire
Beckly, West Yorkshire
Bryn Y Wawr, Carmarthenshire
Chaseways, Hertfordshire
Cherry Tree House, Nottinghamshire
Clynsaer, Carmarthenshire
Conifers, Derbyshire
Dene Brook, South Yorkshire
Dove Valley Mews, South Yorkshire
Ducks Halt, Essex
Fairways, Suffolk
Gables, Essex
Gledholt, West Yorkshire
Hansa Lodge, Essex
Hawkstone, West Yorkshire
Kirkside House, West Yorkshire
Kirkside Lodge, West Yorkshire
Langdale House, West Yorkshire
Longfield, West Yorkshire
Lowry House, Lancashire
Norcott House, West Yorkshire
Norcott Lodge, West Yorkshire
Outwood, West Yorkshire
Oxley Woodhouse, West Yorkshire
Redlands, County Durham
Shear Meadow, Hertfordshire
The Fields, South Yorkshire
The Old Vicarage, Berkshire
The Orchards, Essex
Thornfield House, West Yorkshire
Trinity Lodge, Lockerbie
Walkern Lodge, Hertfordshire
Woodrow House, Cheshire
Supported Living Services
Specialist Day Services
Oakview Services
Case Study
Map
How to Make a Referral



Norcott Lodge, West Yorkshire

75 Leeds Road, Liversedge, West Yorkshire, Yorkshire & Humber WF15 6JA

Residential Services



18+ years



Mixed Gender



9 placements in 4 self-contained living units

Located in the suburbs of Liversedge in West Yorkshire, Norcott Lodge is a specialist residential service providing outcome focused care for adults with learning disabilities and associated complex needs who may have behaviours that challenge.

Person-centred planning is at the heart of everything we do and we are able to meet the changing needs of our residents as they progress through their care pathway, while ensuring their safety is maintained and their independence supported.

Norcott Lodge is in a modern building and is split into 4 different living units. We have a 4 bed and a 3 bed unit that allows individuals to live together in small groups. Each unit has its own communal living space, kitchen diner, bathroom and en-suite toilets. In addition we also have 2 self-contained apartments for individuals with more complex needs who need extra 1-1 support. Externally there is a large garden with seating areas, space for outdoor activities and BBQs and parties.

The service is located in-between Bradford, Leeds and Huddersfield, so with fantastic public transport links there is an abundance of community facilities including shopping centres, cinemas and leisure centres. The residents are encouraged to be involved in the local community as much or as little as they wish to be and there is no shortage of places to visit within walking distance too including parks, pubs and cafés.

In conjunction with the other local Cygnet residential services, we have some great projects that residents can attend regularly including bakery, textiles, gardening and an education centre. These projects introduce vocational and learning activities designed to give residents the opportunity to learn valuable skills and develop confidence.

Our community links:

- > Cinemas
- > Bowling
- > Local parks
- > Community groups
- > Colleges
- > Country Parks
- > Shops, cafés and restaurants
- > Sports clubs
- > Discos
- > Great public transport links to Huddersfield, Bradford, Wakefield and Leeds
- > Excellent local amenities



Staff support residents on holidays and day trips



Focus on reducing restrictive practice



Homely environment with 24/7 support



Employment projects, such as bakery, textiles and gardening work to help deliver meaningful occupation



Click the buttons to find out more about our Learning Disability Social Care Services

Introduction

Our Model of Support - Residential Services

Views from Residents, Carers, Families and Friends

Residential Services with Nursing

Residential Services

4, 5, 7 The Sycamores, Derbyshire

Adele Cottages, Nottinghamshire

Beacon House, West Yorkshire

Beckly, West Yorkshire

Bryn Y Wawr, Carmarthenshire

Chaseways, Hertfordshire

Cherry Tree House, Nottinghamshire

Clynsaer, Carmarthenshire

Conifers, Derbyshire

Dene Brook, South Yorkshire

Dove Valley Mews, South Yorkshire

Ducks Hall, Essex

Fairways, Suffolk

Gables, Essex

Gledholt, West Yorkshire

Hansa Lodge, Essex

Hawkstone, West Yorkshire

Kirkside House, West Yorkshire

Kirkside Lodge, West Yorkshire

Langdale House, West Yorkshire

Longfield, West Yorkshire

Lowry House, Lancashire

Norcott House, West Yorkshire

Norcott Lodge, West Yorkshire

Outwood, West Yorkshire

Oxley Woodhouse, West Yorkshire

Redlands, County Durham

Shear Meadow, Hertfordshire

The Fields, South Yorkshire

The Old Vicarage, Berkshire

The Orchards, Essex

Thornfield House, West Yorkshire

Trinity Lodge, Lockerbie

Walkern Lodge, Hertfordshire

Woodrow House, Cheshire

Supported Living Services

Specialist Day Services

Oakview Services

Case Study

Map

How to Make a Referral



Outwood, West Yorkshire

12 Outwood Lane, Horsforth, West Yorkshire, Yorkshire & Humber LS18 4JA

Residential Services



18+ years



Mixed Gender



10 placements in 3 self-contained living units

Located in Horsforth, a charming village in the suburbs of Leeds, Outwood is a specialist residential service for adults. We provide outcome focused care for individuals with learning disabilities, autism and associated complex needs who may have behaviours that challenge.

We encourage and enable the individuals we support to lead a full and happy life. We work with them to ensure they have more choice and control in their lives. We find out their strengths, abilities and preferences so that the care provided can be as person-centred and meaningful to each individual as possible.

Outwood consists of an 8 bed unit and two 1 bed single occupancy flats. The main unit has 8 en-suite bedrooms with 3 large communal lounges, a kitchen and dining room. The two flats are both self-contained for individuals to live independently in their own space with staff support. Externally there is a large garden that has plenty of space for individuals to participate in sports and games or just enjoying the outside space.

We ensure we involve family or advocates in an individual's care. We have high staffing levels at Outwood, this ensures that we are able to meet the changing needs of the residents as they progress through their care pathway.

The service is in a great location enabling the residents to benefit from excellent community facilities including shopping centres, cinemas, pubs & cafés. The residents are encouraged to be involved in the local community as much or as little as they wish to be.

In conjunction with the other local Cygnet residential services, we have some fantastic projects that residents can attend regularly including bakery, textiles and horticultural work. These projects introduce vocational and learning activities designed to give residents the opportunity to learn valuable skills and develop confidence in a safe and familiar environment.

Our community links:

- > Cinemas
- > Local parks
- > Community groups
- > Colleges
- > Shops, cafés and restaurants
- > Bowling
- > Short bus ride to Leeds City Centre
- > Excellent transport links and local amenities
- > Day services



Supporting individuals to attend local colleges



Attending galas and other community events at Kirkstall Abbey



Supporting individuals to enhance their social skills and attend day services



"Outwood's team have responded to resident's needs, the use of alternative strategies to physical intervention and that commitment to learning lessons, being reflective and being responsive to changes in behaviour." **Professional**



Click the buttons to find out more about our Learning Disability Social Care Services

Introduction

Our Model of Support - Residential Services

Views from Residents, Carers, Families and Friends

Residential Services with Nursing

Residential Services

4, 5, 7 The Sycamores, Derbyshire
Adele Cottages, Nottinghamshire
Beacon House, West Yorkshire
Beckly, West Yorkshire
Bryn Y Wawr, Carmarthenshire
Chaseways, Hertfordshire
Cherry Tree House, Nottinghamshire
Clynsaer, Carmarthenshire
Conifers, Derbyshire
Dene Brook, South Yorkshire
Dove Valley Mews, South Yorkshire
Ducks Halt, Essex
Fairways, Suffolk
Gables, Essex
Gledholt, West Yorkshire
Hansa Lodge, Essex
Hawkstone, West Yorkshire
Kirkside House, West Yorkshire
Kirkside Lodge, West Yorkshire
Langdale House, West Yorkshire
Longfield, West Yorkshire
Lowry House, Lancashire
Norcott House, West Yorkshire
Norcott Lodge, West Yorkshire
Outwood, West Yorkshire
Oxley Woodhouse, West Yorkshire
Redlands, County Durham
Shear Meadow, Hertfordshire
The Fields, South Yorkshire
The Old Vicarage, Berkshire
The Orchards, Essex
Thornfield House, West Yorkshire
Trinity Lodge, Lockerbie
Walkern Lodge, Hertfordshire
Woodrow House, Cheshire

Supported Living Services

Specialist Day Services

Oakview Services

Case Study

Map

How to Make a Referral



Oxley Woodhouse, West Yorkshire

Woodhouse Hill, Huddersfield, West Yorkshire, Yorkshire & Humber HD2 1DH

Residential Services



18+ years



Mixed Gender



7 placements in 7 self-contained living units

Oxley Woodhouse is a specialist residential service in Huddersfield, West Yorkshire, supporting individuals with learning disabilities, autism, complex needs and behaviours that may challenge

Oxley Woodhouse is set in a beautiful 19th-century building that is steeped in character and history. The service is split into 7 smaller living areas. The main house has two 5-bed units and a male only 3-bed unit. Each unit has its own lounge, kitchen and dining space as well as en-suite facilities. One of the 5-bed units has a large arts and crafts room whilst the other has a cinema room for all residents to access and enjoy.

Additionally in the Lodge, there are 4 single occupancy flats. These flats are suitable for individuals with more challenging behaviour and require additional staff support. Again, each flat has its own lounge, dining room, kitchen and en-suite facilities.

Some of our bedrooms that are located on the ground floor are suitable for individuals who have mobility issues and perhaps require a wheelchair. Externally there is a large garden with enough space for individuals to mix and have BBQ's or to have their own time enjoying the outdoor space.

In conjunction with the other local Cygnet residential services, we have some great projects that residents can attend regularly including bakery, textiles and gardening. In addition to that, in the Lodge we have the education centre, providing AQA accredited courses for individuals from Oxley Woodhouse and their peers from other local services.

Our community links:

- > Great public transport links to major local towns and cities
- > Canal walks
- > Retail parks and local shops
- > Cinemas and bowling alleys
- > Restaurants, pubs and cafés

Person-centred recruitment – residents are involved in the interview process



Easy read and other accessible information available to all residents



Gardening project – learning how to grow produce of their own in a vegetable patch



Click the buttons to find out more about our Learning Disability Social Care Services

Introduction

Our Model of Support - Residential Services

Views from Residents, Carers, Families and Friends

Residential Services with Nursing

Residential Services

4, 5, 7 The Sycamores, Derbyshire

Adele Cottages, Nottinghamshire

Beacon House, West Yorkshire

Beckly, West Yorkshire

Bryn Y Wawr, Carmarthenshire

Chaseways, Hertfordshire

Cherry Tree House, Nottinghamshire

Clynsaer, Carmarthenshire

Conifers, Derbyshire

Dene Brook, South Yorkshire

Dove Valley Mews, South Yorkshire

Ducks Hall, Essex

Fairways, Suffolk

Gables, Essex

Gledholt, West Yorkshire

Hansa Lodge, Essex

Hawkstone, West Yorkshire

Kirkside House, West Yorkshire

Kirkside Lodge, West Yorkshire

Langdale House, West Yorkshire

Longfield, West Yorkshire

Lowry House, Lancashire

Norcott House, West Yorkshire

Norcott Lodge, West Yorkshire

Outwood, West Yorkshire

Oxley Woodhouse, West Yorkshire

Redlands, County Durham

Shear Meadow, Hertfordshire

The Fields, South Yorkshire

The Old Vicarage, Berkshire

The Orchards, Essex

Thornfield House, West Yorkshire

Trinity Lodge, Lockerbie

Walkern Lodge, Hertfordshire

Woodrow House, Cheshire

Supported Living Services

Specialist Day Services

Oakview Services

Case Study

Map

How to Make a Referral



Redlands, County Durham

122 Woodland Road, Darlington, County Durham, North East DL3 9LP

Residential Services



18+ years



Mixed
Gender



5 placements

Based in Darlington, County Durham, Redlands supports individuals with learning disabilities, complex needs and can also support those with associated mental or physical health needs.

We encourage and enable the individuals we support to lead a full and happy life. We work with them to ensure they have more choice and control in their lives. We find out their strengths, abilities and preferences so that the care provided can be as person-centred and meaningful to each individual as possible.

Redlands is a large detached house set in a large garden, close to the market town of Darlington. There is a choice of living and dining areas for residents to use and a large kitchen for preparing food. Everyone has their own bedroom, which they are supported to decorate and personalise. Externally there is an established secure sensory garden with a patio and seating areas for residents to relax on their own or with visitors.

Promoting independence is very important to the team and individuals are encouraged to prepare food and drink for themselves with staff support. Developing self-care and daily living skills is a key element of life at Redlands.

Within walking distance from Redlands are local amenities including shops, a post office, cafés and pubs. Also a short distance away is Darlington town centre, offering many more community facilities for individuals to access, including leisure centres, social clubs, shops, colleges and work placements. The residents are encouraged to be involved within the local community as much or as little as they wish to be. The dedicated activity coordinator supports individual activity plans, which are created based on their likes and hobbies.

Our community links:

- Shops
- Cafés and restaurants
- Leisure centres
- Social clubs
- Shops
- Colleges and work placement settings
- Walking distance to Darlington town centre

Our facilities:

- Bedrooms with shared bathrooms
- Choice of living and dining areas
- Large kitchen
- Large garden with patio and seating areas
- Laundry room



Supporting residents on person-centred holidays and day trips



Close links with a number of local groups that cater for individuals with learning disabilities



10 mins from Darlington train station with rail links to major towns and cities



"It is so rewarding that he is getting such a secure, loving and good quality of life." **External Professional**



Click the buttons to find out more about our Learning Disability Social Care Services

Introduction

Our Model of Support - Residential Services

Views from Residents, Carers, Families and Friends

Residential Services with Nursing

Residential Services

4, 5, 7 The Sycamores, Derbyshire
Adele Cottages, Nottinghamshire
Beacon House, West Yorkshire
Beckly, West Yorkshire
Bryn Y Wawr, Carmarthenshire
Chaseways, Hertfordshire
Cherry Tree House, Nottinghamshire
Clynsaer, Carmarthenshire
Conifers, Derbyshire
Dene Brook, South Yorkshire
Dove Valley Mews, South Yorkshire
Ducks Halt, Essex
Fairways, Suffolk
Gables, Essex
Gledholt, West Yorkshire
Hansa Lodge, Essex
Hawkstone, West Yorkshire
Kirkside House, West Yorkshire
Kirkside Lodge, West Yorkshire
Langdale House, West Yorkshire
Longfield, West Yorkshire
Lowry House, Lancashire
Norcott House, West Yorkshire
Norcott Lodge, West Yorkshire
Outwood, West Yorkshire
Oxley Woodhouse, West Yorkshire
Redlands, County Durham
Shear Meadow, Hertfordshire
The Fields, South Yorkshire
The Old Vicarage, Berkshire
The Orchards, Essex
Thornfield House, West Yorkshire
Trinity Lodge, Lockerbie
Walkern Lodge, Hertfordshire
Woodrow House, Cheshire

Supported Living Services

Specialist Day Services

Oakview Services

Case Study

Map

How to Make a Referral



Shear Meadow, Hertfordshire

Bourne End, London Road, Hemel Hempstead, Hertfordshire, East HP1 2RJ

Residential Services



18+ years



Mixed Gender



4 single occupancy apartments

Shear Meadow is a residential service providing outcome focused care for adults with learning disabilities, who may have behaviours that challenge and associated complex needs.

Shear Meadow is a bright, modern and relaxing service that consists of 4 self-contained apartments. Each has their own lounge, kitchen and en-suite bedroom with a shower. In addition, the service also has a number of central communal areas where individuals can meet and spend time with others including a large conservatory and a lounge with a communal television. Externally we have a lovely garden where individuals are supported to grow their own plants and vegetables.

The home is on the outskirts of the town of Hemel Hempstead, and within walking distance of the village of Bourne End in Hertfordshire. There are pleasant walks along the Grand Union Canal and Hemel Hempstead town centre offers a good selection of local shops and amenities. For local shops and pubs, Bourne End is only a few minutes walk away. Hemel Hempstead is easily accessible by both road and rail. The residents are encouraged to be involved in the local community as much or as little as they wish to be.

Individuals come to Shear Meadow for different reasons; they may require more support than can be provided in a supported living setting or they may be moving along their care pathway from a hospital placement. Whatever the reason, the team at Shear Meadow can offer specialist input based on individual need to deliver flexible and effective support.



Our community links:

- > Horse riding
- > Local gym & swimming pool
- > Local library & cultural centres
- > Local cafés & restaurants
- > High street shops
- > Great public transport links



Promoting family involvement where appropriate



Independent advocate attends the service



Residents are encouraged to cook and prepare their own lunches independently or with staff support



Click the buttons to find out more about our Learning Disability Social Care Services

Introduction

Our Model of Support - Residential Services

Views from Residents, Carers, Families and Friends

Residential Services with Nursing

Residential Services

4, 5, 7 The Sycamores, Derbyshire

Adele Cottages, Nottinghamshire

Beacon House, West Yorkshire

Beckly, West Yorkshire

Bryn Y Wawr, Carmarthenshire

Chaseways, Hertfordshire

Cherry Tree House, Nottinghamshire

Clynsaer, Carmarthenshire

Conifers, Derbyshire

Dene Brook, South Yorkshire

Dove Valley Mews, South Yorkshire

Ducks Halt, Essex

Fairways, Suffolk

Gables, Essex

Gledholt, West Yorkshire

Hansa Lodge, Essex

Hawkstone, West Yorkshire

Kirkside House, West Yorkshire

Kirkside Lodge, West Yorkshire

Langdale House, West Yorkshire

Longfield, West Yorkshire

Lowry House, Lancashire

Norcoft House, West Yorkshire

Norcoft Lodge, West Yorkshire

Outwood, West Yorkshire

Oxley Woodhouse, West Yorkshire

Redlands, County Durham

Shear Meadow, Hertfordshire

The Fields, South Yorkshire

The Old Vicarage, Berkshire

The Orchards, Essex

Thornfield House, West Yorkshire

Trinity Lodge, Lockerbie

Walkern Lodge, Hertfordshire

Woodrow House, Cheshire

Supported Living Services

Specialist Day Services

Oakview Services

Case Study

Map

How to Make a Referral



The Old Vicarage, Berkshire

Parsonage Lane, Hungerford, Berkshire RG17 0JB

Residential Services



18+ years



Mixed Gender



13 placements

The Old Vicarage is a specialist residential service, supporting adults with learning disabilities who may have behaviours that challenge and associated complex needs. We provide specialist care and support that is tailored to individual needs, promoting independence and community integration.

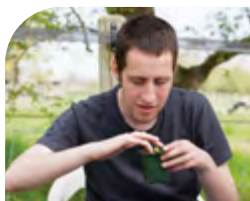
We encourage and enable residents to lead a full and happy life and work with them to find out their strengths, abilities and preferences so that their care can be as person-centred as possible.

The Old Vicarage is a large house, parts of which date back to the 17th Century. The home is situated within easy walking distance to the centre of Hungerford.

The main house has nine spacious rooms and the annexes provide a one two bed apartment, alongside two single self-contained apartments.

Our resident profile:

- > Adults from the age of 18+ years
- > Individuals with a primary diagnosis of learning disability accompanied with behaviours that challenge including mental illness or a forensic background
- > Individuals with a secondary diagnosis of personality disorder or autism
- > May have communication challenges
- > May have associated complex needs



Click the buttons to find out more about our Learning Disability Social Care Services

Introduction

Our Model of Support - Residential Services

Views from Residents, Carers, Families and Friends

Residential Services with Nursing

Residential Services

4, 5, 7 The Sycamores, Derbyshire
 Adele Cottages, Nottinghamshire
 Beacon House, West Yorkshire
 Beckly, West Yorkshire
 Bryn Y Wawr, Carmarthenshire
 Chaseways, Hertfordshire
 Cherry Tree House, Nottinghamshire
 Clynsaer, Carmarthenshire
 Conifers, Derbyshire
 Dene Brook, South Yorkshire
 Dove Valley Mews, South Yorkshire
 Ducks Halt, Essex
 Fairways, Suffolk
 Gables, Essex
 Gledholt, West Yorkshire
 Hansa Lodge, Essex
 Hawkstone, West Yorkshire
 Kirkside House, West Yorkshire
 Kirkside Lodge, West Yorkshire
 Langdale House, West Yorkshire
 Longfield, West Yorkshire
 Lowry House, Lancashire
 Norcott House, West Yorkshire
 Norcott Lodge, West Yorkshire
 Outwood, West Yorkshire
 Oxley Woodhouse, West Yorkshire
 Redlands, County Durham
 Shear Meadow, Hertfordshire
 The Fields, South Yorkshire
 The Old Vicarage, Berkshire
 The Orchards, Essex
 Thornfield House, West Yorkshire
 Trinity Lodge, Lockerbie
 Walkern Lodge, Hertfordshire
 Woodrow House, Cheshire

Supported Living Services

Specialist Day Services

Oakview Services

Case Study

Map

How to Make a Referral



The Orchards, Essex

Station Road, Thorington, Essex, East CO7 8JA

Residential Services



18+ years



Male



5 placements

Based in Thorington, Essex, The Orchards supports men with a learning disability, and can also support men who have complex needs and behaviours that may challenge.

At The Orchards, each individual we support is unique, they have own goals, needs and interests. We work with each resident to ensure that their life is filled with activities that they enjoy, whilst also supporting them to develop their life skills to enable them to live independently. We are proud at The Orchards to have a great track record in enabling residents to step-down along their care pathway into supported living.

The Orchards is a detached property on a quiet residential street in Thorington, a small village in Essex, which has a pub and a café along with a village shop and post office. Just two miles away is Brightlingsea, where the residents regularly visit and make the most of the facilities in a typical seaside town. Nearby there are plenty of community facilities for individuals to access, including shops, colleges, a swimming pool and a local park in a pretty waterside setting. Clacton and Colchester are a short journey away, providing an extensive array of activities and places to visit. Each individual has their own bedroom, which they are encouraged to personalise and decorate to show their individuality.

The Orchards has a large living space and well equipped kitchen-dining area for residents to use. The kitchendiner is the hub of the house where residents are encouraged to help prepare food and drinks for themselves and visitors. Developing self-care and daily living skills is a very important part of life at The Orchards.

Externally there is a large, well-maintained garden, where individuals participate in gardening and enjoy growing their own vegetables. The garden has a seating area for relaxing or hosting barbeques and an outdoor gym. The outside area at The Orchards also boasts an activities centre, where residents can take part in an array of activities including weekly clay sessions with a specialist tutor.

We understand that the relationships our residents have with their family and friends are very important and integral to their well-being. Therefore we ensure that we enable the individual to stay in touch with loved ones and can facilitate home visits, no matter the distance.

Our facilities:

- > 5 large en-suite rooms
- > Full-size outside gym
- > Lounge
- > Dining room
- > Kitchen
- > Activity centre
- > Spacious garden with room for external activities and BBQs

Well equipped outdoor gym
located in the garden



Promote family involvement and facilitate home visits regularly



Residents attend Supported Learning College for courses such as IT safety, cooking and construction



Access to a private swimming pool for residents each week



"I honestly can't thank you enough for caring for our son. It is such a blessing to us that he is in such safe and caring arms."
Family Member



Click the buttons to find out more about our Learning Disability Social Care Services

Introduction

Our Model of Support - Residential Services

Views from Residents, Carers, Families and Friends

Residential Services with Nursing

Residential Services

4, 5, 7 The Sycamores, Derbyshire
Adele Cottages, Nottinghamshire
Beacon House, West Yorkshire
Beckly, West Yorkshire
Bryn Y Wawr, Carmarthenshire
Chaseways, Hertfordshire
Cherry Tree House, Nottinghamshire
Clynsaer, Carmarthenshire
Conifers, Derbyshire
Dene Brook, South Yorkshire
Dove Valley Mews, South Yorkshire
Ducks Hall, Essex
Fairways, Suffolk
Gables, Essex
Gledholt, West Yorkshire
Hansa Lodge, Essex
Hawkstone, West Yorkshire
Kirkside House, West Yorkshire
Kirkside Lodge, West Yorkshire
Langdale House, West Yorkshire
Longfield, West Yorkshire
Lowry House, Lancashire
Norcott House, West Yorkshire
Norcott Lodge, West Yorkshire
Outwood, West Yorkshire
Oxley Woodhouse, West Yorkshire
Redlands, County Durham
Shear Meadow, Hertfordshire
The Fields, South Yorkshire
The Old Vicarage, Berkshire
The Orchards, Essex
Thornfield House, West Yorkshire
Trinity Lodge, Lockerbie
Walkern Lodge, Hertfordshire
Woodrow House, Cheshire

Supported Living Services

Specialist Day Services

Oakview Services

Case Study

Map

How to Make a Referral



Thornfield House, West Yorkshire

261 Highfield Road, Idle, Bradford, West Yorkshire, Yorkshire & Humber BD10 8QY

Residential Services



18+ years



Mixed Gender



7 placements

Thornfield House is a specialist residential service supporting individuals with learning disabilities, complex needs and behaviours that may challenge in Bradford, West Yorkshire.

Thornfield House supports 7 individuals and offers spacious communal areas including a lounge, dining room, kitchen, and a large activity / cinema room. Externally we have beautiful gardens to the front and the rear of the building which feature, plenty of space for outdoor games, bbq, seating area and a sensory room.

Located in the suburbs of Idle in Bradford, the home is within close proximity to local services and amenities, including major transport links. The residents not only can access local towns and cities but we are very close to the beautiful Yorkshire countryside.

We believe that it is essential for individual's well-being to have purpose in their day-to-day life and to learn new skills. We have established different work projects to introduce vocational and learning activities where the individuals we support can learn valuable life skills and develop confidence.

Ongoing assessments enable us to meet the changing needs of individuals as they progress through their care pathway while ensuring their safety is maintained and their independence supported. Regular review meetings involving the individuals, their family and professionals are held to review outcomes, set new goals and re-assess support levels as individuals' progress.

The management and staff team have comprehensive training, including all mandatory training and bespoke training specific to the needs of the residents.

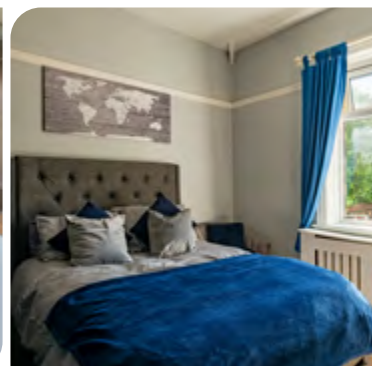
Individuals come to Thornfield House for different reasons; they may require more support than can be provided in a supported living setting or they may be moving along their care pathway from a hospital placement. Whatever the reason, the team can offer specialist input based on individual need to deliver flexible and effective support.

Employment projects, such as bakery, textiles and gardening work to help deliver meaningful occupation



Our community links:

- > Bowling and sensory swimming pool
- > Duck and Dive hydrotherapy pool
- > Shipley bowling alley
- > Thostle Nest riding school
- > Leeds adaptive cycling
- > Leeds jump arena (trampolining)



Click the buttons to find out more about our Learning Disability Social Care Services

Introduction

Our Model of Support - Residential Services

Views from Residents, Carers, Families and Friends

Residential Services with Nursing

Residential Services

4, 5, 7 The Sycamores, Derbyshire

Adele Cottages, Nottinghamshire

Beacon House, West Yorkshire

Beckly, West Yorkshire

Bryn Y Wawr, Carmarthenshire

Chaseways, Hertfordshire

Cherry Tree House, Nottinghamshire

Clynsaer, Carmarthenshire

Conifers, Derbyshire

Dene Brook, South Yorkshire

Dove Valley Mews, South Yorkshire

Ducks Halt, Essex

Fairways, Suffolk

Gables, Essex

Gledholt, West Yorkshire

Hansa Lodge, Essex

Hawkstone, West Yorkshire

Kirkside House, West Yorkshire

Kirkside Lodge, West Yorkshire

Langdale House, West Yorkshire

Longfield, West Yorkshire

Lowry House, Lancashire

Norcott House, West Yorkshire

Norcott Lodge, West Yorkshire

Outwood, West Yorkshire

Oxley Woodhouse, West Yorkshire

Redlands, County Durham

Shear Meadow, Hertfordshire

The Fields, South Yorkshire

The Old Vicarage, Berkshire

The Orchards, Essex

Thornfield House, West Yorkshire

Trinity Lodge, Lockerbie

Walkern Lodge, Hertfordshire

Woodrow House, Cheshire

Supported Living Services

Specialist Day Services

Oakview Services

Case Study

Map

How to Make a Referral



Trinity Lodge, Lockerbie

Townhead Street, Lockerbie, Scotland DG11 2AG

Residential Services



18+ years



Mixed Gender



6 placements (incl. 2 self-contained flats)

Trinity Lodge is a specialist residential service supporting adults with learning disabilities and complex needs. The team supports individuals who have behaviours that may challenge and associated mental or physical health needs.

This new residential service supports the ongoing aging needs of current residents at Trinity House, a residential service with nursing, also in Lockerbie. The service also accepts external referrals.

Trinity Lodge supports 6 individuals in 3 living areas, 2 single occupancy flats and 4 en-suite bedrooms with communal living space. The en-suite bedrooms are located on the first floor and the facilities include a communal and quiet lounge, a dining room, a kitchen, an accessible bathroom, a shared garden with seating and space for outdoor activities. The 2 flats are located on the ground floor and each has its own front door giving individuals added independence. Both flats have their own lobby, en-suite bedroom, kitchen and lounge diner as well as a private garden solely for their own use.

Located in the heart of a residential part of Lockerbie, the service has an abundance of community-based activities and facilities. The residents will be encouraged to be involved in the local community as much or as little as they wish to be.

Within the service is a new social enterprise café named Harnell's Café. The residents from Trinity Lodge and Trinity House are offered the opportunity to develop skills in catering and customer service whilst contributing to all aspects of working in a café environment.



We encourage and enable the individuals we support to lead a full and happy life. We work with them to ensure they have more choice and control in their lives. We find out their strengths, abilities and preferences so that the care provided can be as person-centred and meaningful to each individual as possible.

Our community links:

- > Leisure, hydrotherapy and sensory centres
- > Social clubs
- > Shops and cafés
- > Colleges and work placement settings
- > Local river for fishing

Ensuring residents have a positive experience



Promoting a safe environment to establish positive risk-taking



Encourage social networking or leisure pursuits, maximising the wider use of the community



Actively involve individuals in shaping their service, how it will be delivered and reviewed



Support residents to explore and develop new personal life experiences and maintain existing interests



Having a fulfilling life based on choice and opportunities



Click the buttons to find out more about our Learning Disability Social Care Services

Introduction

Our Model of Support - Residential Services

Views from Residents, Carers, Families and Friends

Residential Services with Nursing

Residential Services

4, 5, 7 The Sycamores, Derbyshire
Adele Cottages, Nottinghamshire
Beacon House, West Yorkshire
Beckly, West Yorkshire
Bryn Y Wawr, Carmarthenshire
Chaseways, Hertfordshire
Cherry Tree House, Nottinghamshire
Clynsaer, Carmarthenshire
Conifers, Derbyshire
Dene Brook, South Yorkshire
Dove Valley Mews, South Yorkshire
Ducks Hall, Essex
Fairways, Suffolk
Gables, Essex
Gledholt, West Yorkshire
Hansa Lodge, Essex
Hawkstone, West Yorkshire
Kirkside House, West Yorkshire
Kirkside Lodge, West Yorkshire
Langdale House, West Yorkshire
Longfield, West Yorkshire
Lowry House, Lancashire
Norcott House, West Yorkshire
Norcott Lodge, West Yorkshire
Outwood, West Yorkshire
Oxley Woodhouse, West Yorkshire
Redlands, County Durham
Shear Meadow, Hertfordshire
The Fields, South Yorkshire
The Old Vicarage, Berkshire
The Orchards, Essex
Thornfield House, West Yorkshire
Trinity Lodge, Lockerbie
Walkern Lodge, Hertfordshire
Woodrow House, Cheshire

Supported Living Services

Specialist Day Services

Oakview Services

Case Study

Map

How to Make a Referral



Walkern Lodge, Hertfordshire

14A Walkern Road, Stevenage, Hertfordshire East SG1 3QX

Residential Services



18+ years



Mixed Gender



4 placements in 3 self-contained living units

Walkern Lodge is a residential home providing outcome focused care for adults with learning disabilities, who may have behaviours that challenge and associated complex needs.

Walkern Lodge is a four-bed home, comprising of two one-bed apartments and one two-bed apartment with spacious communal lounges. All bedrooms have en-suite bathrooms and externally there is a spacious communal garden which features a lovely summerhouse and plenty of space for summer BBQs.

The home is situated in Stevenage in the county of Hertfordshire. Walkern Lodge is close to all local amenities, the city centre and surrounding countryside as well as having major transport links to London and Milton Keynes.

Ongoing assessment and high staffing levels, based on a minimum ratio of one staff member to two residents, means that we are able to meet the changing needs of residents as they progress through their care pathway, while ensuring their safety is maintained and their independence supported. Regular review meetings involving the resident, their family and professionals are held to review outcomes, set new goals and re-assess support levels as individuals' progress.

The management and staff team have comprehensive training, including all mandatory training and bespoke training specific to the needs of the residents. Whatever the reason, the team at Walkern Lodge can offer specialist input based on individual need to deliver flexible and effective support.

Our community links:

- > Local cafés & restaurants
- > Gordon Craig Theatre
- > Stevenage Arts & Leisure Centre
- > Fairlands Valley Park
- > Knebworth House
- > Stevenage Museum
- > Stevenage Football Club
- > Local colleges & libraries



Supporting residents to study and achieve qualifications



Independent advocate attends the service weekly

Person-centred recruitment

- staff and residents interests are matched



"I am thankful for how the team at Walkern Lodge has cared for my daughter. I know she presents with very complex challenging needs, but she has made a lot of progress at Walkern Lodge." **Parent**



Click the buttons to find out more about our Learning Disability Social Care Services

Introduction

Our Model of Support - Residential Services

Views from Residents, Carers, Families and Friends

Residential Services with Nursing

Residential Services

- 4, 5, 7 The Sycamores, Derbyshire
- Adele Cottages, Nottinghamshire
- Beacon House, West Yorkshire
- Beckly, West Yorkshire
- Bryn Y Wawr, Carmarthenshire
- Chaseways, Hertfordshire
- Cherry Tree House, Nottinghamshire
- Clynsaer, Carmarthenshire
- Conifers, Derbyshire
- Dene Brook, South Yorkshire
- Dove Valley Mews, South Yorkshire
- Ducks Halt, Essex
- Fairways, Suffolk
- Gables, Essex
- Gledholt, West Yorkshire
- Hansa Lodge, Essex
- Hawkstone, West Yorkshire
- Kirkside House, West Yorkshire
- Kirkside Lodge, West Yorkshire
- Langdale House, West Yorkshire
- Longfield, West Yorkshire
- Lowry House, Lancashire
- Norcott House, West Yorkshire
- Norcott Lodge, West Yorkshire
- Outwood, West Yorkshire
- Oxley Woodhouse, West Yorkshire
- Redlands, County Durham
- Shear Meadow, Hertfordshire
- The Fields, South Yorkshire
- The Old Vicarage, Berkshire
- The Orchards, Essex
- Thornfield House, West Yorkshire
- Trinity Lodge, Lockerbie
- Walkern Lodge, Hertfordshire
- Woodrow House, Cheshire

Supported Living Services

Specialist Day Services

Oakview Services

Case Study

Map

How to Make a Referral



Woodrow House, Cheshire

1 Brownsville Road, Stockport, Cheshire, North West SK4 4PE

Residential Services



18+ years



Mixed Gender



9 placements in 1 living unit and 5 self-contained apartments

Outstanding ★



Scan the QR code to hear about Amanda's journey

Woodrow House is our community specialist residential home providing outcome focused care for adults with learning disabilities, who may have behaviours that challenge and associated complex needs.

Woodrow House is split into 6 different living units, 5 single occupancy apartments and a four bed unit with communal living areas. Each of the units have their own lounge, dining room, kitchen and bathroom facilities and the shared unit has a well-equipped activity room and computer suite. Externally there is a large garden that all residents have access to. The garden has a plenty of space for outdoor activities including sports, games and socialising at summer BBQs and garden festivals.

Located in a great location in the suburbs of Heaton Moor in Stockport, Woodrow House is close to many community facilities. The residents are encouraged to be involved in the local community, there is no shortage of community integration. Major public transport links are on the doorstep with Stockport and Manchester being within easy reach. As part of our care pathway, Woodrow House enables each individual to build upon their skills to achieve further independence, self-advocacy and confidence, leading to a better quality of life.

Our team supports individuals in creating person-centred activity planners and developing daily living skills both inside the home and out in the community. The integrated multi-disciplinary team (MDT) consists of occupational therapy, speech and language therapy, psychology and psychiatry.

Our community links:

- Reddish Vale Country Park
- Heaton Moor Park
- Local pubs and restaurants
- Cinema, library and other leisure activities
- Great public transport links



In-house multi-disciplinary team (MDT) including psychology, speech and language therapy and occupational therapy



Residents are supported with in-house therapeutic earnings



★ ★ ★ ★ ★
Rated '**Outstanding**' by the CQC

Ensuring meaningful involvement by working inclusively, collaboratively and in genuine partnership



Click the buttons to find out more about our Learning Disability Social Care Services

Introduction

Our Model of Support - Residential Services

Views from Residents, Carers, Families and Friends

Residential Services with Nursing

Residential Services

4, 5, 7 The Sycamores, Derbyshire
Adele Cottages, Nottinghamshire
Beacon House, West Yorkshire
Beckly, West Yorkshire
Bryn Y Wawr, Carmarthenshire
Chaseways, Hertfordshire
Cherry Tree House, Nottinghamshire
Clynsaer, Carmarthenshire
Conifers, Derbyshire
Dene Brook, South Yorkshire
Dove Valley Mews, South Yorkshire
Ducks Hall, Essex
Fairways, Suffolk
Gables, Essex
Gledholt, West Yorkshire
Hansa Lodge, Essex
Hawkstone, West Yorkshire
Kirkside House, West Yorkshire
Kirkside Lodge, West Yorkshire
Langdale House, West Yorkshire
Longfield, West Yorkshire
Lowry House, Lancashire
Norcott House, West Yorkshire
Norcott Lodge, West Yorkshire
Outwood, West Yorkshire
Oxley Woodhouse, West Yorkshire
Redlands, County Durham
Shear Meadow, Hertfordshire
The Fields, South Yorkshire
The Old Vicarage, Berkshire
The Orchards, Essex
Thornfield House, West Yorkshire
Trinity Lodge, Lockerbie
Walkern Lodge, Hertfordshire
Woodrow House, Cheshire

Supported Living Services

Specialist Day Services

Oakview Services

Case Study

Map

How to Make a Referral

Supported Living

Working with individuals in their journey towards independence



18+ years



Mixed
Gender



82 placements



Click the buttons to find out more about our Learning Disability Social Care Services

Introduction

Our Model of Support
- Residential Services

Views from Residents, Carers,
Families and Friends

Residential Services with Nursing
Residential Services

Supported Living Services

Specialist Day Services

Oakview Services

Case Study

Map

How to Make a Referral

Our Locations



North East

Supported Living in Darlington - 4 tenancies

Registered address:

118 Woodland Road, Darlington,
Co Durham, North East DL3 9AG

T: 01325 638 722



North West

Supported Living in Macclesfield - 9 tenancies

Supported Living in Preston - 1 tenancy

Supported Living in Warrington - 1 tenancy

Supported Living in Wigan Central - 2 tenancies

Supported Living in Wigan South - 1 tenancy

Registered address:

Railway House, Suite 21, Railway Road,
Chorley, North West PR6 0HW

T: 01625 919 994



Staffordshire

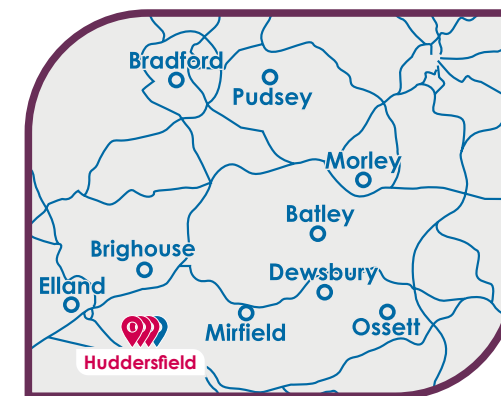
Supported Living in Birmingham - 16 tenancies

Supported Living in Wombourne - 9 tenancies

Registered address:

Unit D, Hunters Row Centre, Gaolgate Place,
Stafford, West Midlands ST16 2AD

T: 01785 337 999



Yorkshire

Supported Living in
Huddersfield (Ashfield) - 6 tenancies

Supported Living in
Huddersfield (Gledcliffe) - 6 tenancies

Supported Living in Leeds - 18 tenancies

Registered address:

Oxley Woodhouse, Woodhouse Hill,
Huddersfield, West Yorkshire HD2 1DH

T: 01484 427580

Supported Living

Working with individuals in their journey towards independence



18+ years



Mixed
Gender



82 placements

Supported Living is an important step towards independence. We know how important it is for people to have the right support so they can live the life they want to live.

We support individuals with learning disabilities, autism, mental health needs and behaviours that challenge. Individuals are supported to hold their own tenancy agreement with a registered housing association. Individuals who are interested in our services, may have previously been detained within a hospital setting and are ready for a step down placement within their local community.

Cygnet Social Care are experienced in supporting individuals who may lack capacity to choose where they live and would work closely alongside our commissioning partners to ensure that correct legal frameworks are in place in order for them to live successfully in the community.

Offering experienced, trained staff twenty-four hours a day, the service benefits from a core staffing team. Each individual would be allocated an experienced and consistent staff team and training would be bespoke to individual support needs which enables tenants to live as independently and safely as possible.

When individuals come to our supported living services, we take the time to get to know them, their preferences, as well as their hopes and dreams for the future. We support individuals with a personal discharge plan to achieve their goals and aspirations and ensure they feel they are in control of their own life.

How we support individuals:

- > Working with them to find out their strengths, abilities and preferences – We get to know them, their families, carers advocates and other people who are important to them and their care and support
- > Helping individuals to set goals as part of their support plan
- > Working with individuals to help them achieve their goals
- > Making sure that individuals have easy read information about their rights and choices in whatever format and language they choose
- > Providing person-centred practical help for individuals, such as training and support on how to manage their home, their money, gardening, housework and healthy living
- > Helping individuals to build relationships and access whatever community activities they would like to take part in

Our resident profile:

- > Diagnosis of learning disability and/or autism
- > May have associated mental health needs
- > Behaviours that may challenge
- > Communication challenges



Click the buttons to find out more about our Learning Disability Social Care Services

Introduction

Our Model of Support
- Residential Services

Views from Residents, Carers,
Families and Friends

Residential Services with Nursing
Residential Services

Supported Living Services

Specialist Day Services

Oakview Services

Case Study

Map

How to Make a Referral

Long Eaton Day Services, Nottinghamshire

4 Milton Street, Long Eaton, Nottinghamshire, East Midlands NG10 1DS

Specialist Day Services



16+ years



Mixed
Gender



25 placements

Long Eaton Day Services specialises in supporting people with a primary diagnosis of a learning disability, in addition to those with complex health needs, physical disabilities and those with autism. We have a long history of enhancing the quality of life of the individuals who attend the service.

We have a focus on demonstrating outcomes and value through our activities, which are derived from our professionals, parents, carers and most importantly the individuals who spend their days with us.

Our services are led by three key disciplines: occupational therapy, physiotherapy and speech and language therapy. Our multi-disciplinary approach allows us to develop a clear and focused activity plan that works towards maximising an individual's potential and gaining the inputs as needed from the on site dedicated clinical team.

With our staff and a clinical team, our staffing model provides one member of staff for every two individuals as a minimum. This allows us to deliver a meaningful activity plan for each individual. Our activity plans are person centred and co-produced, each one taking into account our guests likes, dislikes and comfort zone.

We have different groups that run in different areas of the service to cater to a multitude of social, sensory and support needs. We also have facilities to enable those who would prefer to complete activities alone, to do so with the support of staff.

Our facilities:

- Equipment designed to optimise sensory experience and heighten relaxation
- Spacious sensory rooms
- Soft zones
- Arts & crafts areas
- Hydrotherapy room with heated pool and hoist
- Cinema room
- Quiet zone
- A fleet of buses to facilitate trips and outings

We provide dedicated transport that is available to and from home, as well as for regular trips out and about into the community and further afield.

Our days are flexible and with the involvement of the individual and their carers, we maximise the time that is spent while they are with us. Our service provides flexibility for families and carers, with opening times from 8am to 8pm Monday to Friday.

Our guest profile:

- Primary diagnosis of learning disability
- May be wheelchair users
- May have complex physical disabilities and require specialist interventions such as PEG or NG feeding
- May have autism
- May have communication difficulties
- Require full or part time, specialist day services
- Will be living at home or in a community setting such as a residential home

Our community links:

- Elvaston Castle and Country Park
- Derby Assembly Rooms
- Westfield Shopping Centre
- Buxton Museum
- Local cinema, restaurants and pubs
- Nottingham town centre
- Leisure centres



Click the buttons to find out more about our Learning Disability Social Care Services

Introduction

Our Model of Support - Residential Services

Views from Residents, Carers, Families and Friends

Residential Services with Nursing

Residential Services

Supported Living Services

Specialist Day Services

Long Eaton Day Services, Nottinghamshire

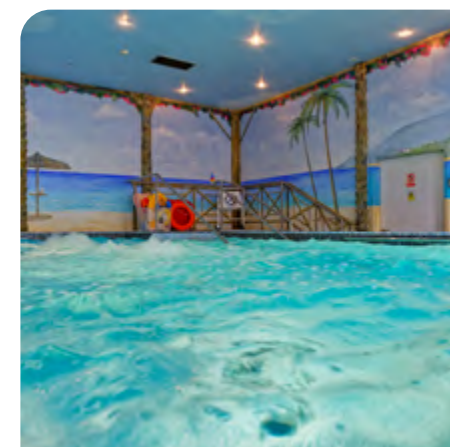
Sheffield Day Services, South Yorkshire

Oakview Services

Case Study

Map

How to Make a Referral



Sheffield Day Services, South Yorkshire

Spa Lane, Woodhouse, Sheffield, South Yorkshire, Yorkshire & Humber S13 7PG

Specialist Day Services



16+ years



Mixed
Gender



55 placements

Sheffield Day Services specialises in supporting people with a primary diagnosis of a learning disability, in addition to those with complex health needs, physical disabilities and those with autism. We have a long history of enhancing the quality of life of the individuals who attend the service.

We have a focus on demonstrating outcomes and value through our activities, which are derived from our professionals, parents, carers and most importantly the individuals who spend their days with us.

Our services are led by three key disciplines: occupational therapy, physiotherapy and speech and language therapy. Our multidisciplinary approach allows us to develop a clear and focused activity plan that works towards maximising an individual's potential and gaining the inputs as needed from the on site dedicated clinical team.

With our staff and a clinical team, our staffing model provides one member of staff for every two individuals as a minimum. This allows us to deliver a meaningful activity plan for each individual. Our activity plans are person-centred and co-produced, each one taking into account our guests likes, dislikes and comfort zone.

Our guest profile:

- > Primary diagnosis of learning disability
- > May be wheelchair users
- > May have complex physical disabilities and require specialist interventions such as PEG or NG feeding
- > May have autism
- > May have communication difficulties
- > Require full or part time, specialist day services
- > Will be living at home or in a community setting such as a residential home

We have different groups that run in different areas of the service to cater to a multitude of social, sensory and support needs. We also have facilities to enable those who would prefer to complete activities alone, to do so with the support of staff.

We provide dedicated transport that is available to and from home, as well as for regular trips out and about into the community and further afield.

Our days are flexible and with the involvement of the individual and their carers, we maximise the time that is spent while they are with us. Our service provides flexibility for families and carers, with opening times from 8am to 8pm Monday to Friday. We are also able to provide a service to assess the needs of an individual, as a standalone service.

Our facilities:

- > State of the art equipment designed to optimise sensory experience and heighten relaxation
- > Spacious sensory rooms
- > Soft zones
- > Arts & crafts areas
- > Hydrotherapy room with heated pool and hoist
- > Rebound therapy
- > Cinema rooms
- > Beauty and pamper room
- > Quiet zone
- > IT room
- > A fleet of buses to facilitate trips and outings

Our community links:

- > Weston Park Museum
- > Tycross Zoo
- > Yorkshire Wild Life Park
- > Botanical Gardens
- > Rother Valley
- > Clifton Park
- > Poolsbrook
- > Crystal Peaks
- > Hillsborough Park
- > Wentworth Gardens



Click the buttons to find out more about our Learning Disability Social Care Services

Introduction

Our Model of Support
- Residential Services

Views from Residents, Carers,
Families and Friends

Residential Services with Nursing

Residential Services

Supported Living Services

Specialist Day Services

Long Eaton Day Services, Nottinghamshire

Sheffield Day Services, South Yorkshire

Oakview Services

Case Study

Map

How to Make a Referral



Matthew's
Journey

Find out more >

Read about how the team at Sheffield Day Services, South Yorkshire transformed Matthew's life.







Leanne's* Journey

Oaklands, Hexham

Specialist Residential Service with Nursing for Adults with Learning Disabilities



Click the buttons to find out more about our Learning Disability Social Care Services

Introduction

Our Model of Support
- Residential Services

Views from Residents, Carers,
Families and Friends

Residential Services with Nursing
Residential Services

Supported Living Services

Specialist Day Services

Oakview Services

Case Study

Map

How to Make a Referral

Leanne's history

Before arriving at Oaklands, Leanne went through a long and difficult journey. She spent a considerable amount of time in a secure hospital, where she struggled to keep herself safe, often absconding from the ward and engaging in self-harming behaviours.

Following her discharge, Leanne faced serious challenges in the community. Unable to find stable accommodation, she spent time living rough, which significantly impacted her physical health and overall wellbeing.

When Leanne Came to Us

When Leanne first arrived at Oaklands, she was emotionally dysregulated and found it hard to feel safe.

Past experiences of abuse left her unable to trust others, and she had significant issues with money management.

Leanne also struggled with a gambling addiction, which made it difficult for her to control her finances or plan for the future.

The staff at Oaklands took the time to personalise her room, creating a safe and welcoming environment to help her feel settled within her new home.

Leanne's Care

Leanne has made exceptional progress since her arrival. She has worked closely with the nursing team to develop a tailored financial support plan, helping her regain control over her money and reduce her gambling habits. Staff also supported her in managing her emotions more effectively and implemented care plans to reduce incidents of self-harm.

Engaging with the community has become an important part of Leanne's journey. With staff support, she now enjoys regular outings to local tea shops, spa days, and long peaceful walks. She also takes part in mindfulness sessions, which have helped improve her emotional wellbeing.

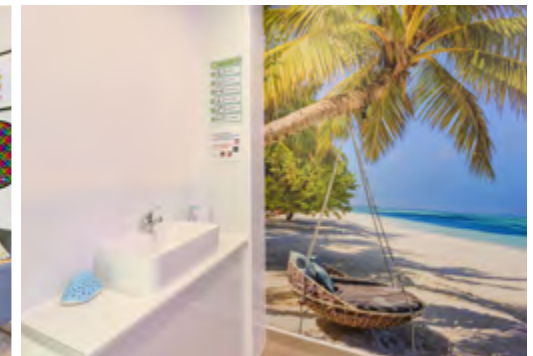
A major milestone in her journey was obtaining a mobility car, with the help of the staff team. This has given her a greater sense of independence and allowed her to enjoy more time out in the community.



Leanne Today

Today, Leanne is settled and content at Oaklands. She's currently planning her next holiday, something that once felt out of reach.

She enjoys regular visits from her grandchildren and finds joy in baking for fellow residents.



*Name has been changed to protect her identity

Residential Services with Nursing

- 1 Ellen Mhor**
2-4 Ellen Street, Dundee,
Scotland DD1 2QH
T: 01382 279 086
- 2 Hollyhurst**
118 Woodland Road, Darlington,
County Durham, North East
DL3 9LN
T: 01325 252 002
- 3 Hope House**
59 Hutton Avenue, Hartlepool,
Cleveland, North East TS26 9PW
T: 01429 224 442
- 4 Lindsay House**
118 Americanmuir Road,
Dundee, Scotland DD3 9AG
T: 01382 819 910
- 5 Oaklands**
Anick Road, Hexham,
Northumberland,
North East NE46 4JR
T: 01434 600 684
- 6 Old Leigh House**
3 Old Leigh Road, Leigh-on-Sea,
Essex, East SS9 1LB
T: 01702 711 111
- 7 Ranaich House**
Leewood Road, Dunblane,
Stirling, Scotland FK15 0DR
T: 01786 823 694
- 8 The Fields**
Spa Lane, Woodhouse,
Sheffield, South Yorkshire,
Yorkshire & Humber S13 7PG
T: 0114 269 1144
- 9 Thistle House**
119 Americanmuir Road, Dundee,
Stirling, Scotland DD3 9AG
T: 01382 819 910
- 10 Toller Road**
13 Toller Road, Stoneygate,
Leicester, East Midlands LE2 3HP
T: 0116 270 3118
- 11 Trinity House**
38 Carlisle Road, Lockerbie,
Scotland DG11 2DS
T: 01576 204 676
- 12 Willow House**
229 Portland Road,
Edgbaston, Birmingham,
West Midlands B17 8LS
T: 0121 420 0210

Residential Services

- 13 4, 5, 7 The Sycamores**
4, 5, 7 The Sycamores,
South Normanton, Derbyshire,
East Midlands DE55 3BJ
T: 01733 811 622
- 14 Adele Cottages**
Rufford Colliery Lane,
Rainworth, Nottinghamshire,
East Midlands NG21 0HR
T: 01623 499 980
- 15 Beacon House**
281 Beacon Road, Wibsey,
Bradford, West Yorkshire,
Yorkshire & Humber BD6 3DQ
T: 01274 501 681
- 16 Beckly**
56 Cooper Lane, Shelf,
Halifax, West Yorkshire,
Yorkshire & Humber HX3 7RG
T: 01274 606 350
- 17 Bryn Y Wawr, Carmarthenshire**
6 New Road, Llandeilo,
Carmarthenshire SA19 6DB
T: 01558 822 763
- 18 Chaseways**
1 Chaseways, Sawbridgeworth,
Hertfordshire, East CM21 0AS
T: 01279 414 939
- 19 Cherry Tree House**
Park Hall Road, Mansfield
Woodhouse, Nottinghamshire,
East Midlands NG19 8QX
T: 01158 966 740
- 20 Clynsaer, Carmarthenshire**
Cynghordy, Llandovery,
Carmarthenshire SA20 0LP
T: 01550 750 224
- 21 Conifers**
1 Central Avenue, Borrowash,
Derby, Derbyshire, East
Midlands DE72 3JZ
T: 01332 665 298
- 22 Dene Brook**
Dalton Road, Dalton Parva,
Rotherham, South Yorkshire,
Yorkshire & Humber S65 3QQ
T: 01709 855 029
- 23 Dove Valley Mews**
75 Park Street, Wombwell,
Barnsley, South Yorkshire,
Yorkshire & Humber S73 0HL
T: 01226 448 770

- 24 Ducks Halt**
8 Walton Road, Kirby-le-Soken,
Essex, East CO13 0DU
T: 01255 853 930
- 25 Fairways**
4 Fullers Field, Swan Lane,
Westerfield, Ipswich,
Suffolk, East IP6 9AX
T: 01473 214 966
- 26 Gables**
262 Ipswich Road, Colchester,
Essex, East CO4 0ER
T: 01206 841 515
- 25 Gledholt**
32 Greenhead Road,
Huddersfield, Yorkshire &
Humber HD1 4EZ
T: 01484 507 810
- 26 Hansa Lodge**
58 Farm Road, Rainham,
East RM13 9LG
T: 01708 557 369
- 27 Hawkstone**
Shann Lane, Off Spring
Garden Lane, Keighley,
West Yorkshire, Yorkshire &
Humber BD20 6NA
T: 01535 288 470
- 28 Kirkside House**
1 Spen Lane, Kirkstall,
Leeds, West Yorkshire,
Yorkshire & Humber LS5 3EJ
T: 0113 278 4131
- 29 Kirkside Lodge**
1 Spen Lane, Kirkstall,
Leeds, West Yorkshire,
Yorkshire & Humber LS5 3EJ
T: 0113 278 6834
- 30 Langdale House**
56 Gledholt Road, Huddersfield,
West Yorkshire, Yorkshire &
Humber HD1 4HR
T: 01484 429 226
- 31 Longfield House**
Oakleigh Road, Clayton,
Bradford, West Yorkshire,
Yorkshire & Humber BD14 6NP
T: 01274 882 086
- 32 Lowry House**
Pudding Lane, via Viner Way,
Godley, Hyde, Manchester,
Lancashire, North West SK14 3BS
T: 0161 6961 690

- 33 Norcott House**
75 Leeds Road, Liversedge,
West Yorkshire, Yorkshire &
Humber WF15 6JA
T: 01924 409 100
- 34 Norcott Lodge**
75 Leeds Road, Liversedge,
West Yorkshire, Yorkshire &
Humber WF15 6JA
T: 01924 408 505
- 35 Outwood**
12 Outwood Lane, Horsforth,
West Yorkshire, Yorkshire &
Humber LS18 4JA
T: 0113 258 6144
- 36 Oxley Woodhouse**
Woodhouse Hill, Fartown,
Huddersfield, West Yorkshire,
Yorkshire & Humber HD2 1DH
T: 01484 248 143
- 37 Redlands**
122 Woodland Road, Darlington,
County Durham, North East DL3 9LP
T: 01325 243 788
- 38 Shear Meadow**
Bourne End, London Road,
Hemel Hempstead, Hertfordshire,
East HP1 2RJ
T: 01442 864 484
- 8 The Fields**
Spa Lane, Woodhouse,
Sheffield, South Yorkshire,
Yorkshire & Humber S13 7PG
T: 0114 269 1144
- 39 The Orchards**
Station Road, Thorrington, Essex,
East CO7 8JA
T: 01206 250 676
- 52 The Old Vicarage, Berkshire**
Parsonage Lane, Hungerford,
Berkshire RG17 0JB
T: 01488 683 634
- 40 Thornfield House**
261 Highfield Road, Idle,
Bradford, West Yorkshire,
Yorkshire & Humber BD10 8QY
T: 01274 414 165
- 41 Trinity Lodge**
Townhead Street, Lockerbie,
Scotland DG11 2AG
T: Coming soon

- 42 Walkern Lodge**
14a Walkern Road, Stevenage,
Hertfordshire, East SG1 3QX
T: 01438 749 301
- 43 Woodrow House**
1 Brownsville Road, Stockport,
Cheshire, North West SK4 4PE
T: 0161 470 9910

Supported Living Services

- 44 North East Supported Living**
Office address: 118 Woodland
Road, Darlington, Co Durham,
North East DL3 9AG
T: 01325 638 722
Service:
[Supported Living in Darlington](#)
- 45 North West Supported Living**
Office address: London Road,
Oak Grove, Macclesfield,
Cheshire SK11 0JG
T: 01625 468 951
Multiple services:
[Supported Living in Macclesfield, Preston, Warrington, Wigan Central and Wigan South](#)
- 46 Staffordshire Supported Living**
Office address: Unit D, Hunters
Row Shopping Centre, Gaolgate
Place, Stafford, West Midlands
ST16 2AD
T: 01785 337 999
Multiple services:
[Supported Living in Birmingham and Wolverhampton](#)
- 47 Yorkshire Supported Living**
Office address: Oxley Woodhouse,
Woodhouse Hill, HD2 1DH
T: 01484 427 580
Multiple services:
[Supported Living in Huddersfield \(Ashfield\), Huddersfield \(Gledcliffe\) and Leeds](#)



Click the buttons to find out more about our Learning Disability Social Care Services

Introduction

Our Model of Support - Residential Services

Views from Residents, Carers, Families and Friends

Residential Services with Nursing

Residential Services

Supported Living Services

Specialist Day Services

Oakview Services

Case Study

Map

How to Make a Referral

Specialist Day Services

- 48 Long Eaton Day Services**
4 Milton Street, Long Eaton,
Nottinghamshire, East
Midlands NG10 1DS
T: 0115 972 8784
- 49 Sheffield Day Services**
Spa Lane, Woodhouse,
Sheffield, South Yorkshire,
Yorkshire & Humber S13 7PG
T: 0114 269 1177



Click the buttons to find out more about our Learning Disability Social Care Services

- Introduction
- Our Model of Support - Residential Services
- Views from Residents, Carers, Families and Friends
- Residential Services with Nursing
- Residential Services
- Supported Living Services
- Specialist Day Services
- Oakview Services
- Case Study

Map

How to Make a Referral

How to Make a Referral

For more information or to make a referral, please contact your regional Business Relationship Manager or email: sc.referrals@cygnethealth.co.uk

- 1 Referral made to Cygnet Social Care and a desktop assessment is undertaken to review suitability for placement
- 2 If a suitable placement is identified, an assessment is arranged and undertaken by our specialist team
- 3 Feedback is provided on whether our service can meet the individual's needs
- 4 Detailed placement proposal is formulated to include care plans and funding information
- 5 Once placement is confirmed, transition plans are developed with all relevant stakeholders and admission date is agreed



Social Care Referrals



Click the buttons to find out more about our Learning Disability Social Care Services

Introduction

Our Model of Support
- Residential Services

Views from Residents, Carers,
Families and Friends

Residential Services with Nursing
Residential Services

Supported Living Services

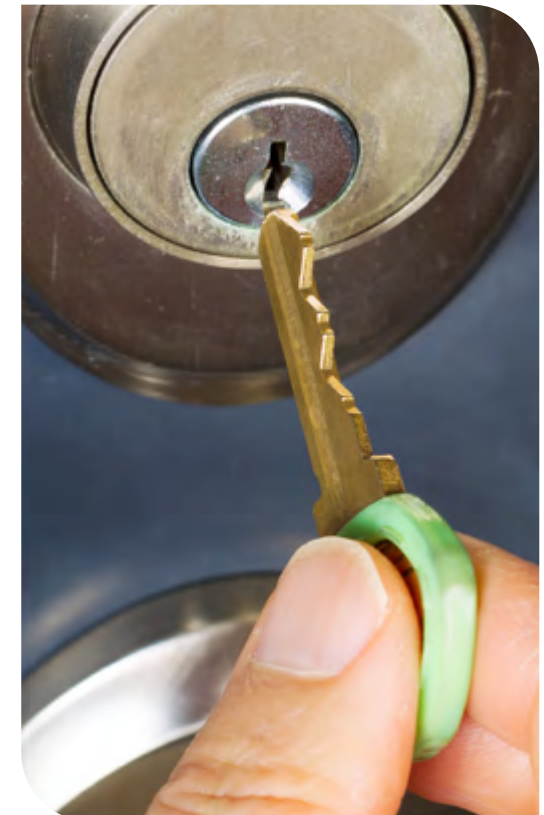
Specialist Day Services

Oakview Services

Case Study

Map

How to Make a Referral







Improving lives together

 **Cygnet Social Care**
4 Millbank, 3rd Floor,
Westminster, London
SW1P 3JA

 **0207 123 5706**

www.cygnetgroup.com

Follow us on social media:



CYG-1282 | Date of Preparation: 28/05/25

Integrity

Trust

Empower

Respect

Care