

Improving lives together

Child and Adolescent Mental Health Services

- > CAMHS PICU
- > CAMHS Acute
- > CAMHS Low Secure



Welcome

Cygnnet was established in 1988. Since then we have developed a wide range of health care services for young people and adults with mental health needs, acquired brain injuries, eating disorders, autism and learning disabilities within the UK. We have built a reputation for delivering pioneering services and outstanding outcomes for the individuals in our care.



Our expert and highly dedicated care team of 11,500 employees support 7,500 individuals each year across 150 services to consistently make a positive difference to their lives.



Cygnnet Health Care is part of the Cygnnet Group which also provides social care services for adults in England, Scotland and Wales.



Click the buttons to find out more about our Child and Adolescent Mental Health Services

Introduction

[Our Models of Care](#)

[Our myPath Care Model](#)

[Our Outcomes](#)

[Our CAMHS Podcast](#)

[CAMHS PICU](#)

[CAMHS Acute](#)

[CAMHS Low Secure](#)

[Our Feedback](#)

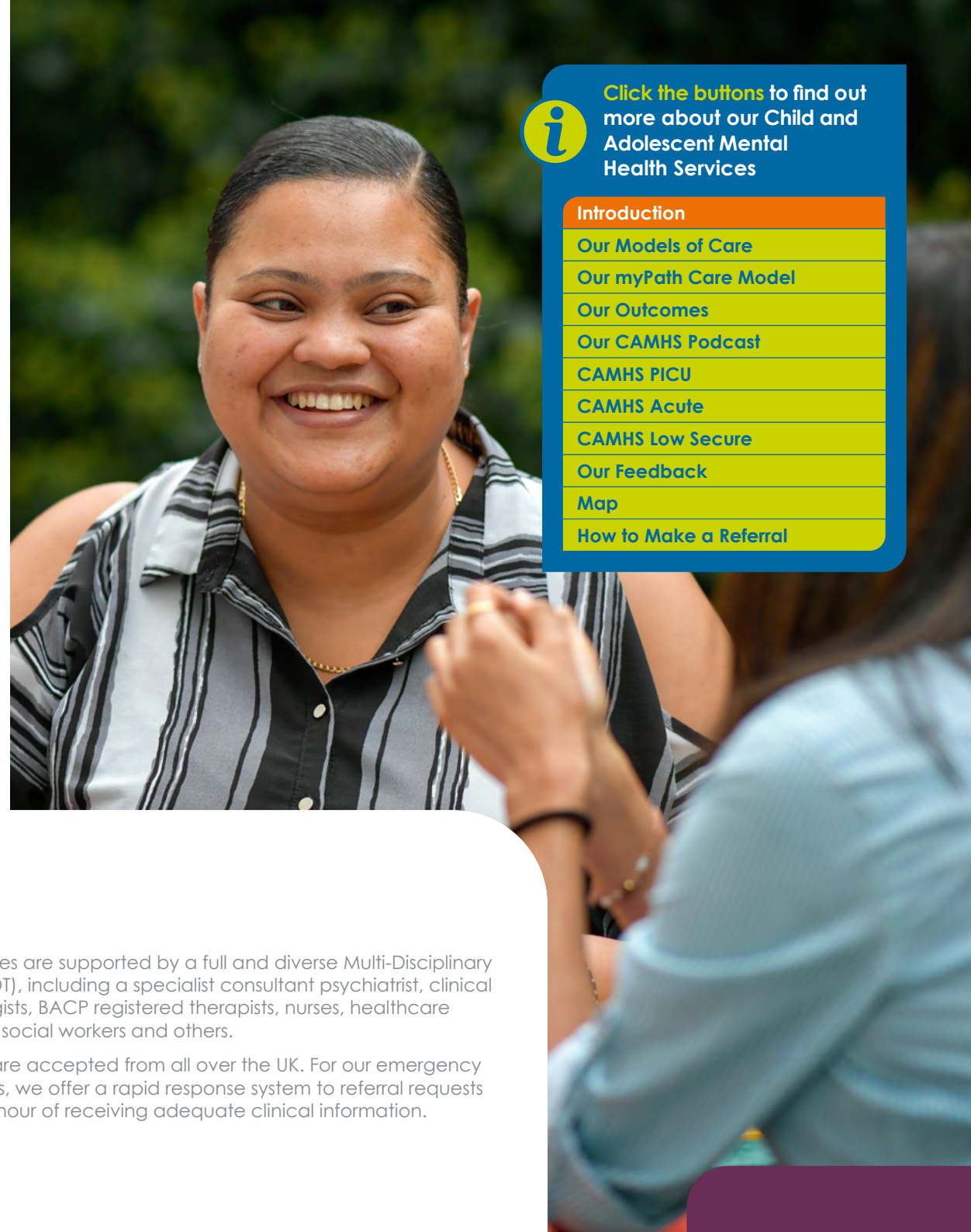
[Map](#)

[How to Make a Referral](#)

Contents

Introduction	03
Our Models of Care	06
Model of care	07-08
Our myPath Care Model	09
Our Outcomes	10
Our CAMHS Podcast	11
CAMHS PICU	12-14
Cygnnet Bury Forestwood, North West Cygnnet Hospital Sheffield, Yorkshire & Humber	
CAMHS Acute	12-14
Cygnnet Bury Forestwood, North West Cygnnet Hospital Sheffield, Yorkshire & Humber	
CAMHS Low Secure	12-14
Cygnnet Bury Forestwood, North West Cygnnet Hospital Sheffield, Yorkshire & Humber	
Service User Satisfaction Survey Results	15
Map	16
How to make a referral	17





Click the buttons to find out more about our Child and Adolescent Mental Health Services

[Introduction](#)

[Our Models of Care](#)

[Our myPath Care Model](#)

[Our Outcomes](#)

[Our CAMHS Podcast](#)

[CAMHS PICU](#)

[CAMHS Acute](#)

[CAMHS Low Secure](#)

[Our Feedback](#)

[Map](#)

[How to Make a Referral](#)

Introduction

Cygnnet offers a range of specialist Children and Adolescents Services, focused on supporting young people aged between 12 and 18 in Tier 4 Acute, psychiatric intensive care (PICU) and low secure environments. The aim of our Children and Adolescents Services is to help young people stabilise and return home as soon as possible.

Our services support young people aged up to 18 who are experiencing a variety of acute and complex mental health problems, in a welcoming and nurturing environment.

Our services are supported by a full and diverse Multi-Disciplinary Team (MDT), including a specialist consultant psychiatrist, clinical psychologists, BACP registered therapists, nurses, healthcare assistants, social workers and others.

Referrals are accepted from all over the UK. For our emergency admissions, we offer a rapid response system to referral requests within an hour of receiving adequate clinical information.

Our service user profile:

- > Diagnosis of:
 - Psychosis
 - Self-harm and/or suicidal ideation
 - Depression or anxiety
 - Emerging personality disorder
 - Substance misuse – providing there is a primary diagnosis of a mental health problem
 - Emotional, social and behavioural difficulties
 - Borderline / mild learning disability as a secondary diagnosis
 - Disordered eating as a secondary diagnosis
 - Autism spectrum disorders, with a mental health primary diagnosis
- > May have a forensic history
- > May have a history of previous placement breakdowns



12-18 years



Mixed
Gender/
Female



Mental Health Act Status:
Detained (must be detained
for PICU/LSU) or **Informal**



Click the **buttons** to find out more about our Child and Adolescent Mental Health Services

Introduction

Our Models of Care

Our myPath Care Model

Our Outcomes

Our CAMHS Podcast

CAMHS PICU

CAMHS Acute

CAMHS Low Secure

Our Feedback

Map

How to Make a Referral



Our services at a glance:

- High staffing ratios
- Self-harm treatment
- Cognitive Behavioural Therapy (CBT)
- Anger management
- Anxiety management
- Daily living skills
- Community and social involvement
- On-site Ofsted registered schools
- Dialectical Behaviour Therapy (DBT)
- Mindfulness groups
- Young People's Council
- Family therapy



Click the buttons to find out more about our Child and Adolescent Mental Health Services

Introduction

[Our Models of Care](#)

[Our myPath Care Model](#)

[Our Outcomes](#)

[Our CAMHS Podcast](#)

[CAMHS PICU](#)

[CAMHS Acute](#)

[CAMHS Low Secure](#)

[Our Feedback](#)

[Map](#)

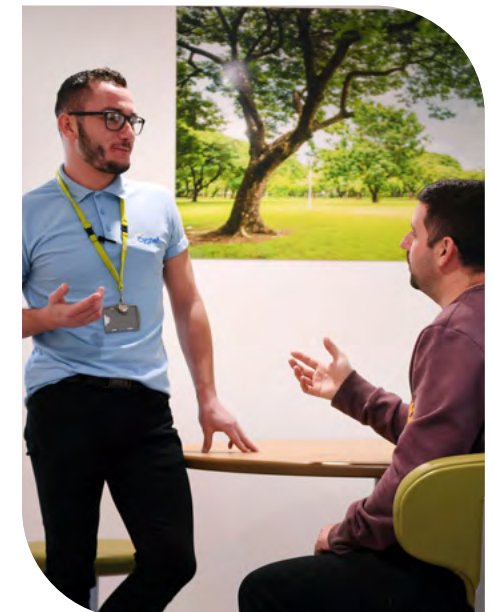
[How to Make a Referral](#)

Our multi-disciplinary teams:

- Consultant psychiatrist
- Clinical psychologist
- BACP registered therapists
- Nurses
- Healthcare assistants
- Social workers
- Hospital director
- Ward managers
- Occupational therapist
- Speech and language therapist

Our outcome measurement tools

- CGAS (Children's Global Assessment Scale)
- HoNOSCA (Health of the Nation Outcome Scales and for Children and Adolescents)
- RCADS (Revised Children's Anxiety and Depression Scale)
- CA-GAP (Child and Adolescent Global Assessment of Progress)
- MFQ (Mood and Feelings Questionnaire)
- Emotional Resilience Framework
- SDQ (Strength and Difficulties Questionnaire)



CAMHS General Adolescent Unit (GAU) Model of Care

KITE - Key Interventions of Therapeutic Enabling



Click the buttons to find out more about our Child and Adolescent Mental Health Services

[Introduction](#)

[Our Model of Care](#)

[Our GAU Model of Care](#)

[Our PICU Model of Care](#)

[Our Low Secure Model of Care](#)

[Our myPath Care Model](#)

[Our Outcomes](#)

[Our CAMHS Podcast](#)

[CAMHS PICU](#)

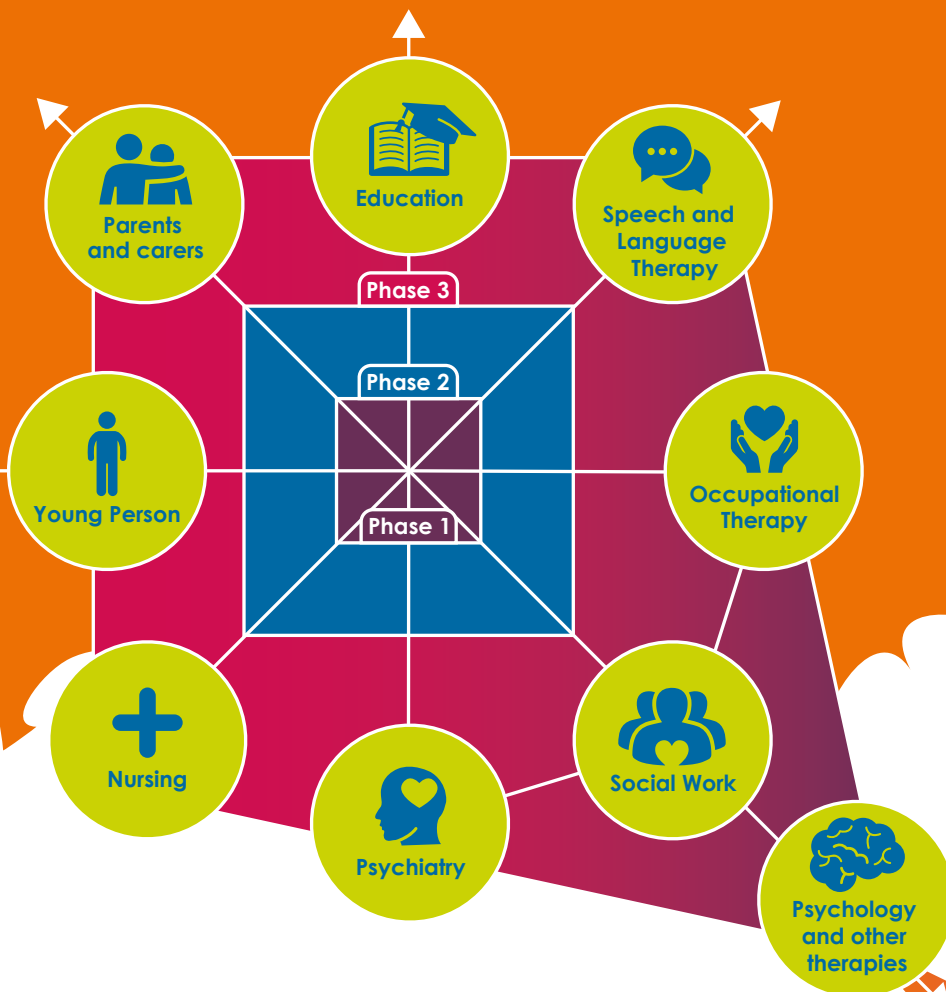
[CAMHS Acute](#)

[CAMHS Low Secure](#)

[Our Feedback](#)

[Map](#)

[How to Make a Referral](#)



Phase 1 - Assessment and Engagement (First 72 Hours)

Phase 1 begins as soon as a referral is made and the team have agreed that a GAU admission would be beneficial. Your parents/carers may be contacted if additional information is needed. Once an admission plan has been made you, your family/carers and community team will be updated.

Within the first few days of your arrival you will be given a ward tour, introduced to each member of the multi-disciplinary team that will be providing your care, and given the opportunity to familiarise yourself with the therapy timetable.

Phase 2 - Formulation and Treatment (Weeks 1-8)

During phase 2 you will begin to complete initial assessments that will provide a baseline from which you and the team will together create a plan and begin to shape your care. This time is focused on understanding you and your needs, and figuring out how the team can support you. Each disciplinary will offer both 1:1 sessions and group sessions that will make up your therapy timetable.

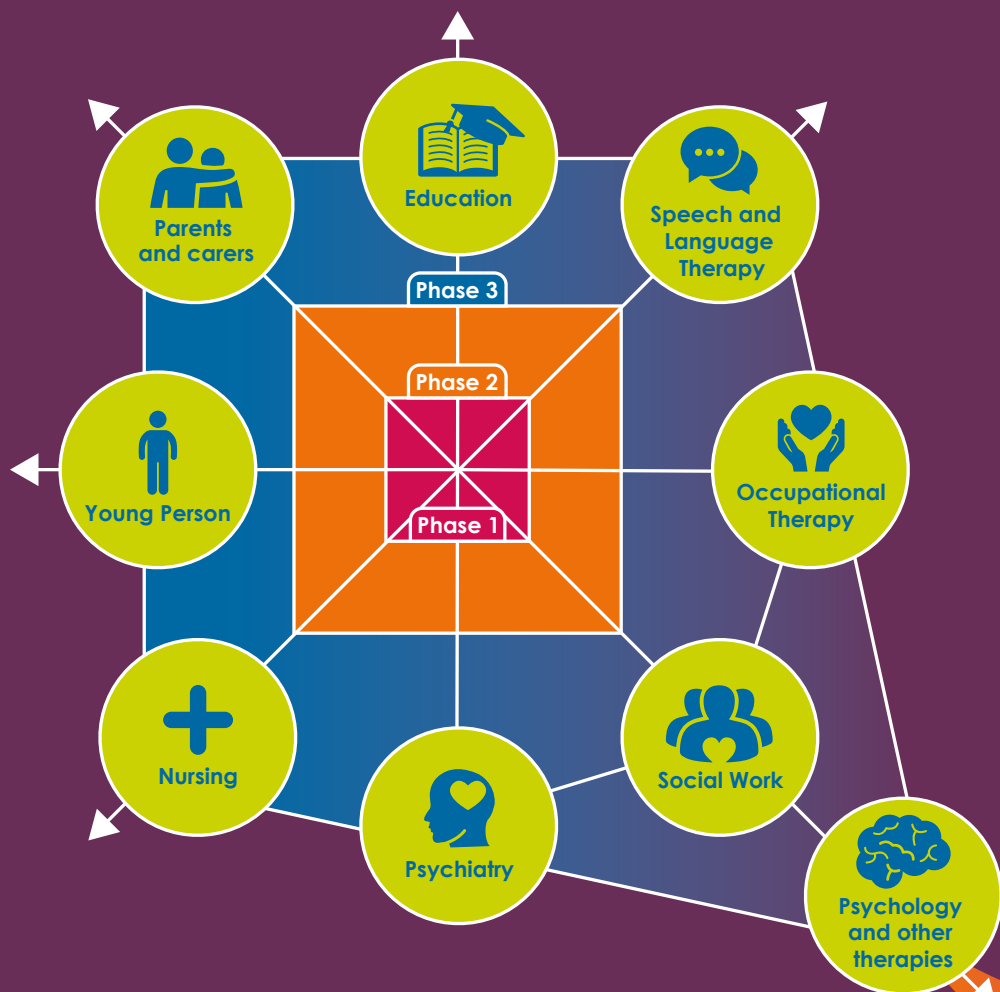
You will also have regular medication reviews so that adjustments can be made as necessary.

Phase 3 - Transition and Discharge (Weeks 9-12)

Phase 3 is focused on preparing you for the next step in your pathway - whether that be discharge into the community or a step up within the mental health system. Contact made will be with your family/carers and community team to ensure that this process is as smooth as possible and that you receive the appropriate level of support throughout.

CAMHS Psychiatric Intensive Care Unit (PICU) Model of Care

KITE - Key Interventions of Therapeutic Enabling



Phase 1 - Pre-admission and Admission (First 72hrs)

Phase 1 begins as soon as a referral is made and the team have agreed that a PICU admission would be beneficial. Your parents/carers may be contacted if additional information is needed. Once an admission plan has been made you, your family/carers and community team will be updated.

Within the first few days of your arrival you will be given a ward tour, introduced to each member of the multi-disciplinary team that will be providing your care, and given the opportunity to familiarise yourself with the therapy timetable.

Phase 2 - Formulation and Treatment (Weeks 1-6)

During phase 2 you will begin to complete initial assessments that will provide a baseline from which you and the team will together create a plan and begin to shape your care. This time is focused on understanding you and your needs, and figuring out how the team can support you. Each disciplinary will offer both 1:1 sessions and group sessions that will make up your therapy timetable.

You will also have regular medication reviews so that adjustments can be made as necessary.

Phase 3 - Transition and Discharge (Weeks 6-8)

Phase 3 is focused on preparing you for the next step in your pathway - whether that be discharge into the community or a step up within the mental health system. Contact made will be with your family/carers and community team to ensure that this process is as smooth as possible and that you receive the appropriate level of support throughout.



Click the buttons to find out more about our Child and Adolescent Mental Health Services

[Introduction](#)

[Our Model of Care](#)

[Our GAU Model of Care](#)

[Our PICU Model of Care](#)

[Our Low Secure Model of Care](#)

[Our myPath Care Model](#)

[Our Outcomes](#)

[Our CAMHS Podcast](#)

[CAMHS PICU](#)

[CAMHS Acute](#)

[CAMHS Low Secure](#)

[Our Feedback](#)

[Map](#)

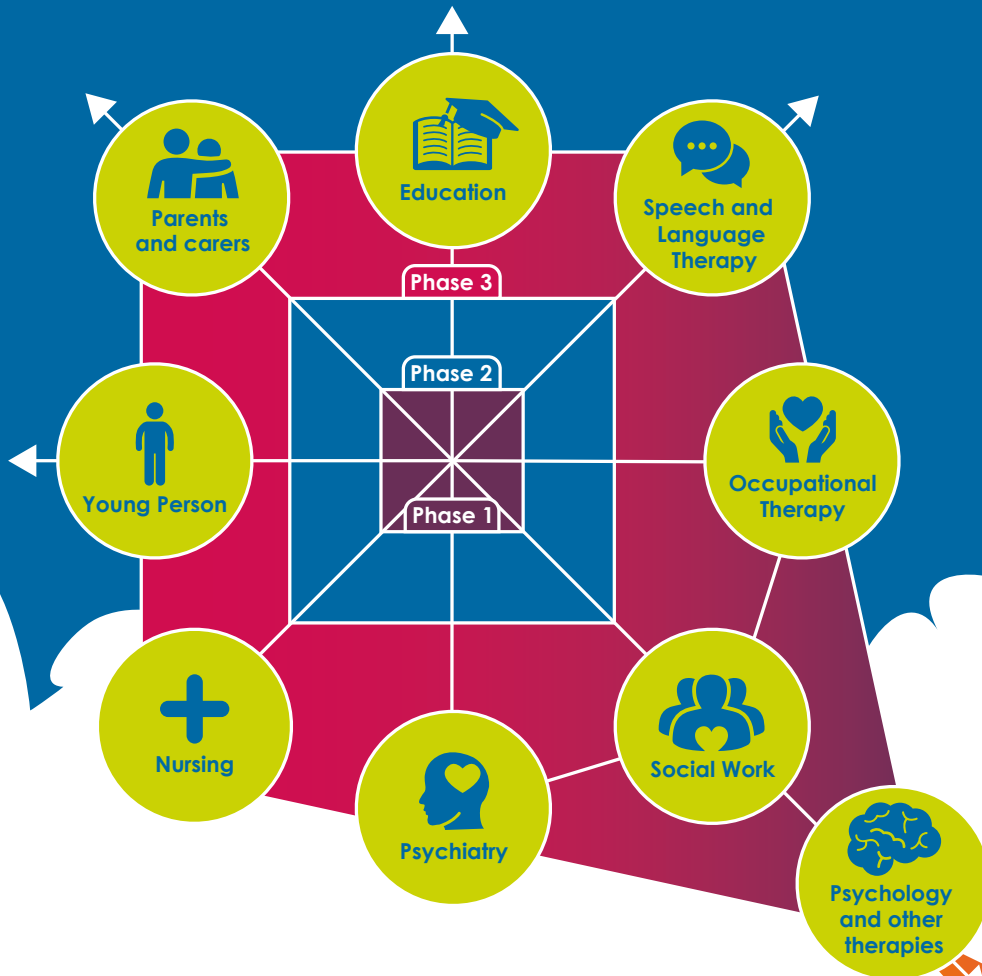
[How to Make a Referral](#)

CAMHS Low Secure Model of Care

KITE - Key Interventions of Therapeutic Enabling



Click the buttons to find out more about our Child and Adolescent Mental Health Services



Phase 1 - Assessment and Engagement (First 72 Hours)

Phase 1 begins as soon as a referral is made and the team have agreed that a GAU admission would be beneficial, Your parents/carers may be contacted if additional information is needed. Once an admission plan has been made you, your family/carers and community team will be updated.

Within the first few days of your arrival you will be given a ward tour, introduced to each member of the multi-disciplinary team that will be providing your care, and given the opportunity to familiarise yourself with the therapy timetable.

Phase 2 - Formulation and Treatment (Weeks 1-8)

During phase 2 you will begin to complete initial assessments that will provide a baseline from which you and the team will together create a plan and begin to shape your care. This time is focused on understanding you and your needs, and figuring out how the team can support you. Each disciplinary will offer both 1:1 sessions and group sessions that will make up your therapy timetable.

You will also have regular medication reviews so that adjustments can be made as necessary.

Phase 3 - Transition and Discharge (Weeks 9-12)

Phase 3 is focused on preparing you for the next step in your pathway - whether that be discharge into the community or a step up within the mental health system. Contact made will be with your family/carers and community team to ensure that this process is as smooth as possible and that you receive the appropriate level of support throughout.

Introduction

Our Model of Care

[Our GAU Model of Care](#)

[Our PICU Model of Care](#)

[Our Low Secure Model of Care](#)

[Our myPath Care Model](#)

[Our Outcomes](#)

[Our CAMHS Podcast](#)

[CAMHS PICU](#)

[CAMHS Acute](#)

[CAMHS Low Secure](#)

[Our Feedback](#)

[Map](#)

[How to Make a Referral](#)

Our myPath Care Model

When a young person is admitted into our services, our main aim is to help them to stabilise and achieve discharge to the least restrictive environment as soon as possible. Our services support young people who are experiencing a variety of acute and complex mental health problems, in a welcoming and nurturing environment. Therapeutic support is provided by a diverse and specialist multi-disciplinary team, who apply our care model, **myPath**.

myPath is our unique overarching care model that monitors service user engagement levels, manages their records, assesses their progress and formulates a personalised and dynamic care plan with measurable targets. Within our Child and Adolescent Mental Health Services, **myPath** is designed to make sure that young people have the chance to be fully involved in their treatment pathway from admission to discharge, whilst receiving access to high quality education through specialist facilities.

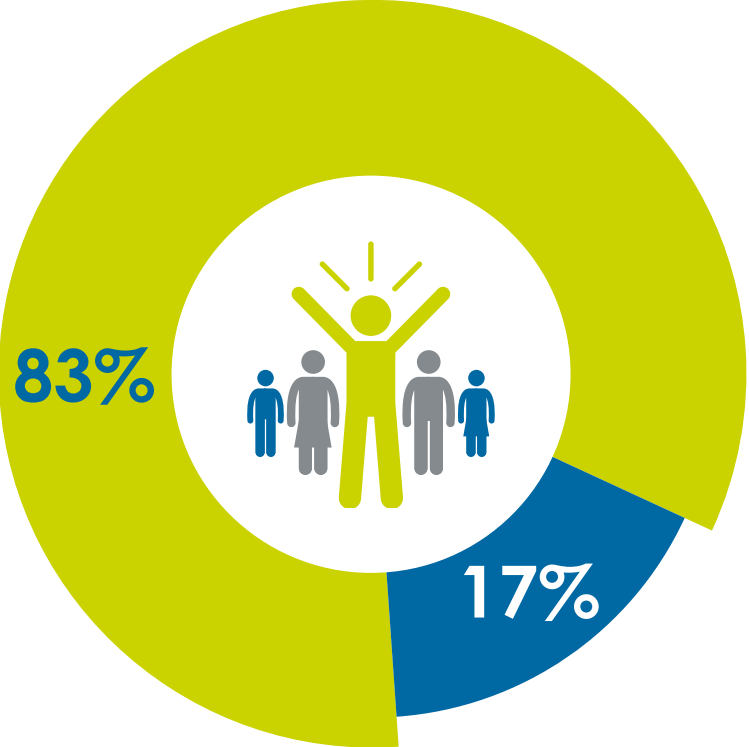
Our staff teams understand how to give individuals the appropriate support using tailored programmes of care. For each young person, a daily risk assessment is completed, which enables dynamic responses to individual presentation within any 24 hour period and encourages positive risk-taking through robust co-produced management plans and longer term risk management tools. Each young person has an individualised activity timetable built around essential skills of personal interest and a care plan that is designed with the young person and reviewed with them on a weekly basis. In addition to national outcome measurements, we also measure progress by using our specialist outcome tool, Child and Adolescent Global Assessment of Progress (CA-GAP), which collates all aspects of a young person's progress from admission to discharge and assists us with identifying areas of focus when care planning. **myPath** promotes the combination of mental wellbeing and stability with educational needs to support young people to return to full-time education, employment or training, wherever possible.



Click the buttons to find out more about our Child and Adolescent Mental Health Services

- [Introduction](#)
- [Our Models of Care](#)
- [Our myPath Care Model](#)
- [Our Outcomes](#)
- [Our CAMHS Podcast](#)
- [CAMHS PICU](#)
- [CAMHS Acute](#)
- [CAMHS Low Secure](#)
- [Our Feedback](#)
- [Map](#)
- [How to Make a Referral](#)

Our Outcomes



Moved to a less restrictive / similar service or home



Moved to a higher level of support

Average length of stay is **10 weeks** in our CAMHS PICU services

Average length of stay is **9 weeks** in our CAMHS Acute services

Average length of stay is **13 months** in our CAMHS Low Secure services



Click the buttons to find out more about our Child and Adolescent Mental Health Services

- Introduction
- Our Models of Care
- Our myPath Care Model
- Our Outcomes**
- Our CAMHS Podcast
- CAMHS PICU
- CAMHS Acute
- CAMHS Low Secure
- Our Feedback
- Map
- How to Make a Referral

*Data from a 12 month period up to March 2025

Our CAMHS Podcast

Walking In Our Shoes

This podcast is dedicated to showcasing real journeys through our adolescent inpatient wards at Cygnet Hospital Sheffield.

This podcast series is co-produced by some of the young people at Cygnet Hospital Sheffield, as well as some of the parents and carers. The intention behind this series is to showcase the reality of what an inpatient stay on an adolescent ward is like.

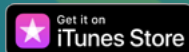


Cygnet CAMHS Podcast: www.cygnetgroup.com/podcasts/walking-in-our-shoes-the-cygnet-camhs-podcast



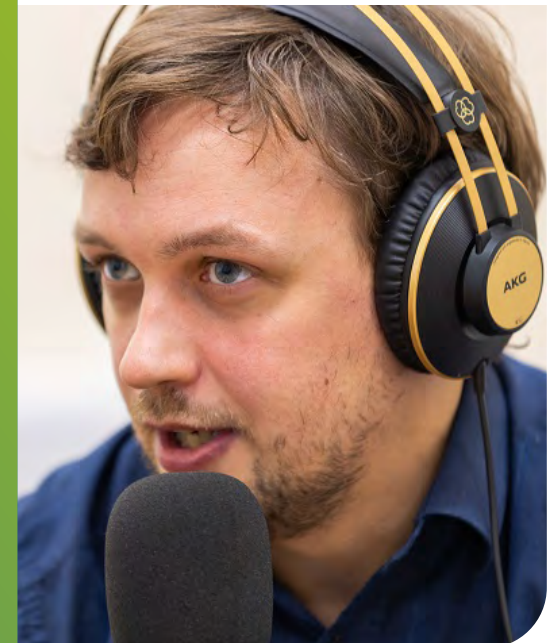
Episodes:

- > **Episode 1:** – Admission to a CAMHS Ward
- > **Episode 2:** – The role of the Nursing Team
- > **Episode 3:** – Occupational Therapy and Art Therapy
- > **Episode 4:** – Education
- > **Episode 5:** – Co-production
- > **Episode 6:** – The rights of a young person in hospital
- > **Episode 7:** – Psychological Therapies
- > **Episode 8:** – Discharge



Click the buttons to find out more about our Child and Adolescent Mental Health Services

Introduction
Our Models of Care
Our myPath Care Model
Our Outcomes
Our CAMHS Podcast
CAMHS PICU
CAMHS Acute
CAMHS Low Secure
Our Feedback
Map
How to Make a Referral





Cygnet Bury Forestwood, North West

Buller Street, off Bolton Road, Bury, North West BL8 2BS



CAMHS PICU

CAMHS Acute

CAMHS Low Secure



12-18 years



Mixed Gender



44 beds in 4 wards

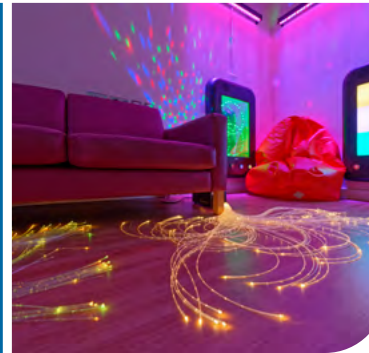
Cygnet Bury Forestwood offers CAMHS Tier 4 PICU, general acute and low secure services across four wards, which provide a defined treatment pathway from admission through to intervention and discharge, including rapid assessment and treatment. There is a diverse educational programme, teaching a range of subjects at the on-site school, Forestwood School, which is registered with the Department for Education.

Buttercup Ward and **Primrose Ward** are our CAMHS PICU wards for young people aged between 12 and 18. The services are for young people primarily referred from CAMHS acute services who, in the context of a severe mental illness, exhibit a high level of risk that cannot be safely managed in a CAMHS general adolescent unit, and where the level of risk is not of a persistent nature that would require longer term care in a secure environment.

Wizard House is our 12 bed general CAMHS acute ward. This service is provided for young people with a range of mental disorders associated with significant impairment and/or significant risk to themselves or others, such that their needs cannot be safely and adequately met by community Tier 3 CAMHS or specialist education facilities. This includes young people with mild learning disability, autism, or disordered eating who do not require Tier 4 CAMHS learning disability services.

Our facilities:

- > En-suite bedrooms
- > Spacious communal areas
- > Outdoor sports areas
- > Training kitchen to support skills development
- > On-site Ofsted registered school
- > IT café



My son has been discharged from Primrose Ward, I truly and honestly cannot thank them enough. All staff...have gone above and beyond for us as a family. It's heartbreaking having your child away from you but they're outstanding. I can't put into words how lovely everyone is. - Parent

Mulberry Ward is our low secure service which supports girls aged between 12 and 18. The ward can positively support girls who may need a longer stay in an inpatient setting within a low secure environment. We offer a care and treatment pathway for individuals who may have complex mental health issues and whose needs and risks are such they need to be supported in this environment.

The service focuses on working with young people to understand their mental health and their risks and support their recovery, enabling them to be successfully discharged to a less restrictive environment and to reduce the possibility of relapse and likelihood of requiring a secure service in the future.



Click the buttons to find out more about our Child and Adolescent Mental Health Services

Introduction

Our Models of Care

Our myPath Care Model

Our Outcomes

Our CAMHS Podcast

CAMHS PICU

Cygnet Bury Forestwood, North West

Cygnet Hospital Sheffield, Yorkshire & Humber

CAMHS Acute

Cygnet Bury Forestwood, North West

Cygnet Hospital Sheffield, Yorkshire & Humber

CAMHS Low Secure

Cygnet Bury Forestwood, North West

Cygnet Hospital Sheffield, Yorkshire & Humber

Our Feedback

Map

How to Make a Referral



Cygnet Hospital Sheffield, Yorkshire & Humber

83 East Bank Road, Sheffield, Yorkshire & Humber S2 3PX

CAMHS PICU

CAMHS Acute

CAMHS Low Secure



12-18 years



Mixed Gender



40 beds in 3 wards



Scan QR to listen to the Cygnet CAMHS Podcast



Click the buttons to find out more about our Child and Adolescent Mental Health Services

Introduction

Our Models of Care

Our myPath Care Model

Our Outcomes

Our CAMHS Podcast

CAMHS PICU

Cygnet Bury Forestwood, North West

Cygnet Hospital Sheffield, Yorkshire & Humber

CAMHS Acute

Cygnet Bury Forestwood, North West

Cygnet Hospital Sheffield, Yorkshire & Humber

CAMHS Low Secure

Cygnet Bury Forestwood, North West

Cygnet Hospital Sheffield, Yorkshire & Humber

Our Feedback

Map

How to Make a Referral

Cygnet Hospital Sheffield offers CAMHS Tier 4 PICU, CAMHS acute and CAMHS low secure services over three wards. They provide individualised care for young people who are experiencing a mental health crisis, and whose needs mean they cannot be supported in community settings. The services provide safe, therapeutic environments with a focus on helping the young person to stabilise, so that hospital treatment is no longer required.

Unicorn Ward is a CAMHS Tier 4 PICU service and provides support for young people, both male and female who have complex needs and require high intensity nursing care. The focus is on stabilisation with a view to enabling transition to a general acute ward or back into the care of community services. The service is able to provide robust care and support for young people displaying significant levels of challenging behaviour. The service works with young people to prepare them for discharge back out of service and into their home area.

Unicorn Ward is the first CAMHS PICU service in the country to become CAMHeleon accredited. CAMHeleon celebrates and promotes best practice and the things that really make a positive difference to young inpatients, identifying small changes that have a big impact.

Pegasus Ward is a 13 bed general adolescent acute service, providing support for young people, both male and female, and is focused on helping them return home. The service is dedicated to helping young people maintain their school placements, if possible, and admissions can be either formal or informal.

Griffin Ward is a 15 bed low secure service that positively supports young people who may need a longer stay in an inpatient setting within a low secure environment. It offers a care and treatment pathway for individuals who may have complex mental health issues and whose needs and risk are such they need to be supported in this environment. The ward focuses on working with individuals to understand their mental health and their risks and support their recovery. This enables them to be successfully discharged to a less restrictive environment and to reduce the possibility of relapse.

Having a PICU, a general adolescent acute service and a low secure service on one site provides a clear therapeutic pathway through the services.

There is a diverse educational programme in place, so that young people can continue their education at the same time as receiving treatment. Education is provided by our on-site Phoenix School, which was rated 'Outstanding' in all areas by Ofsted in June 2024.

Our facilities:

- > En-suite bedrooms
- > Spacious communal areas
- > Outdoor sports areas
- > Training kitchen to support skills development
- > On-site Ofsted registered school
- > Gym

Experience we have had with the hospital has been fantastic, they have always kept us informed with what's happening, the staff are very friendly and very helpful with any question we have needed answering. I cannot thank the hospital enough for the help they are giving to my daughter.

Thank you to Cygnet Hospital Sheffield.

- Parent

CAMHeleon accredited



Certified Triangle of Care member



You have a fantastic staff team! I can't thank you or them for the amount of support I receive day in day out! I have never made this much progress in my time in hospital. I have found hope again. I am thriving and I could never do it without your staff team.

- Young person



Rated Outstanding in all domains by Ofsted

Our Feedback

“The staff were caring and supportive and went above and beyond for me.” – **Young person, Cygnet Bury Forestwood**



“My son was taken care of and listened to. He was supported and finally he learnt to trust, “they treat me like a person” were his exact words. I will forever be grateful.” – **Family member**



“You have a fantastic staff team! I have never made this much progress in my time in hospital. I have found hope again.” – **Young person, Cygnet Hospital Sheffield**



“Thank you so, so much for everything. I will be telling everyone how amazing the staff on Unicorn are. My son has said nothing but good things about you all and I will forever be grateful. Thank you so much for taking care of my son, he felt safe, cared for and listened to.” – **Family member**



“The nurses were absolutely brilliant and so were many of the support workers.. I’m now an adult, I’m living life so much more happily now, and I started an apprenticeship as an Apprentice Healthcare Assistant after I was discharged. I have future ambitions to work in a psychiatric hospital and I hope to be like those who supported me during my time at Cygnet Hospital Bury.” – **Young person, Cygnet Bury Forestwood**



Click the **buttons** to find out more about our Child and Adolescent Mental Health Services

[Introduction](#)

[Our Models of Care](#)

[Our myPath Care Model](#)

[Our Outcomes](#)

[Our CAMHS Podcast](#)

[CAMHS PICU](#)

[CAMHS Acute](#)

[CAMHS Low Secure](#)

[Our Feedback](#)

[Map](#)

[How to Make a Referral](#)



Map | Our specialist services by region

CAMHS PICU

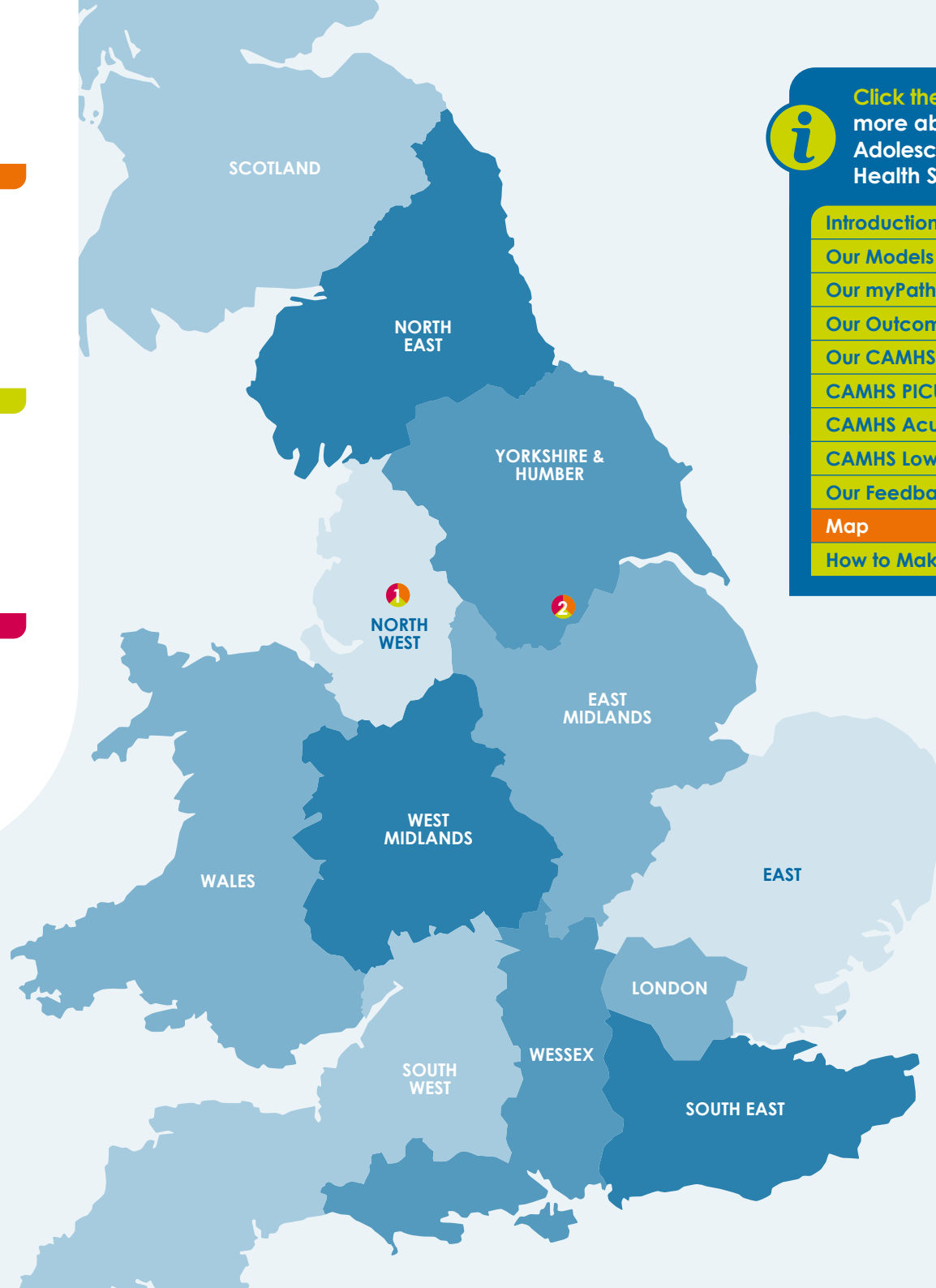
- 1 Cygnet Bury Forestwood**
Buller Street, off Bolton Road, Bury, North West BL8 2BS
T: **0161 762 7200**
- 2 Cygnet Hospital Sheffield**
83 East Bank Road, Sheffield, Yorkshire & Humber S2 3PX
T: **0114 279 3350**

CAMHS Acute

- 1 Cygnet Bury Forestwood**
Buller Street, off Bolton Road, Bury, North West BL8 2BS
T: **0161 762 7200**
- 2 Cygnet Hospital Sheffield**
83 East Bank Road, Sheffield, Yorkshire & Humber S2 3PX
T: **0114 279 3350**

CAMHS Low Secure

- 1 Cygnet Bury Forestwood**
Buller Street, off Bolton Road, Bury, North West BL8 2BS
T: **0161 762 7200**
- 2 Cygnet Hospital Sheffield**
83 East Bank Road, Sheffield, Yorkshire & Humber S2 3PX
T: **0114 279 3350**



Click the buttons to find out more about our Child and Adolescent Mental Health Services

[Introduction](#)

[Our Models of Care](#)

[Our myPath Care Model](#)

[Our Outcomes](#)

[Our CAMHS Podcast](#)

[CAMHS PICU](#)

[CAMHS Acute](#)

[CAMHS Low Secure](#)

[Our Feedback](#)

[Map](#)

[How to Make a Referral](#)

How to Make a Referral

We are able to take referrals 7 days a week.

To make a referral please contact **your regional Business Relationship Manager.**

Alternatively, you can contact the Cygnet Bed Hub on:
0808 164 4450 /
chcl.referrals@nhs.net.



CAMHS PICU/Acute referral steps:

- 1 Referral made to Cygnet referrals team via **0808 164 4450 / chcl.referrals@nhs.net**
- 2 Feedback provided on whether our services can meet the service user's needs within 1 hour of receipt of adequate clinical information
- 3 Admission agreed and arranged with referring team following confirmation of funding

CAMHS Low Secure referral steps:

- 1 Referral made to Cygnet referrals team via **0808 164 4450 / chcl.referrals@nhs.net** or via your regional Business Relationship Manager
- 2 Assessment arranged and undertaken via our assessment team
- 3 Feedback provided on whether our service can meet the individual's needs
- 4 Assessment pack formulated including care plans and funding information
- 5 Admission agreed and plans for transition arranged with referring team following confirmation of acceptance of placement



Click the buttons to find out more about our Child and Adolescent Mental Health Services

Introduction

Our Models of Care

Our myPath Care Model

Our Outcomes

Our CAMHS Podcast

CAMHS PICU

CAMHS Acute

CAMHS Low Secure

Our Feedback

Map

How to Make a Referral







 **Cygnet Health Care**
4 Millbank, 3rd Floor,
Westminster, London
SW1P 3JA

 **0207 123 5706**

www.cygnetgroup.com

Follow us on social media:



CYG-730 | Date of Preparation: 08/05/25

Integrity

Trust

Empower

Respect

Care