

NEW

*Improving lives together*

# Cygnnet Hospital Kidsgrove, Staffordshire

- > Acute service for women
- > Highly Specialised Personality Disorder service for women



# Introduction

**Cygnets Hospital Kidsgrove is our new hospital for women in Staffordshire. The service is now open and accepting referrals.**

There are two wards at the hospital; a 20 bed Acute service for women and an 11 bed Highly Specialised Personality Disorder Rehabilitation service.

Crocus Ward provides a safe and stabilising environment for women who are experiencing an acute episode of mental illness and require an emergency admission. Burleigh Ward provides specialised support for women with a personality disorder and other complex needs.

**The services provided are:**

**NEW**

**Crocus Ward**

20 bed Acute service

**Now Open and  
Accepting Referrals**

**NEW**

**Burleigh Ward**

11 bed Highly Specialised  
Personality Disorder service

**Accepting Referrals**

# Crocus Ward

## Acute Service



Female



18+ Years



20 beds

**Crocus Ward, our new 20 bed female emergency acute inpatient service, provides a safe and stabilising environment for women experiencing an acute episode of mental illness and require an emergency admission.**

The ethos of Crocus Ward is to assess and treat women in the least restrictive environment, whilst planning for discharge in a robust and timely fashion. With a focus on stabilisation, we support women to manage their mental health, reinforce daily living skills and prepare for independent life back in the community.

Our team work closely and collaboratively with individuals, their families and the referrer to provide a seamless pathway from referral to discharge. Our approach is recovery focused and supported by a comprehensive multi-disciplinary team, contributing to shorter lengths of stay.

### Our service user profile:

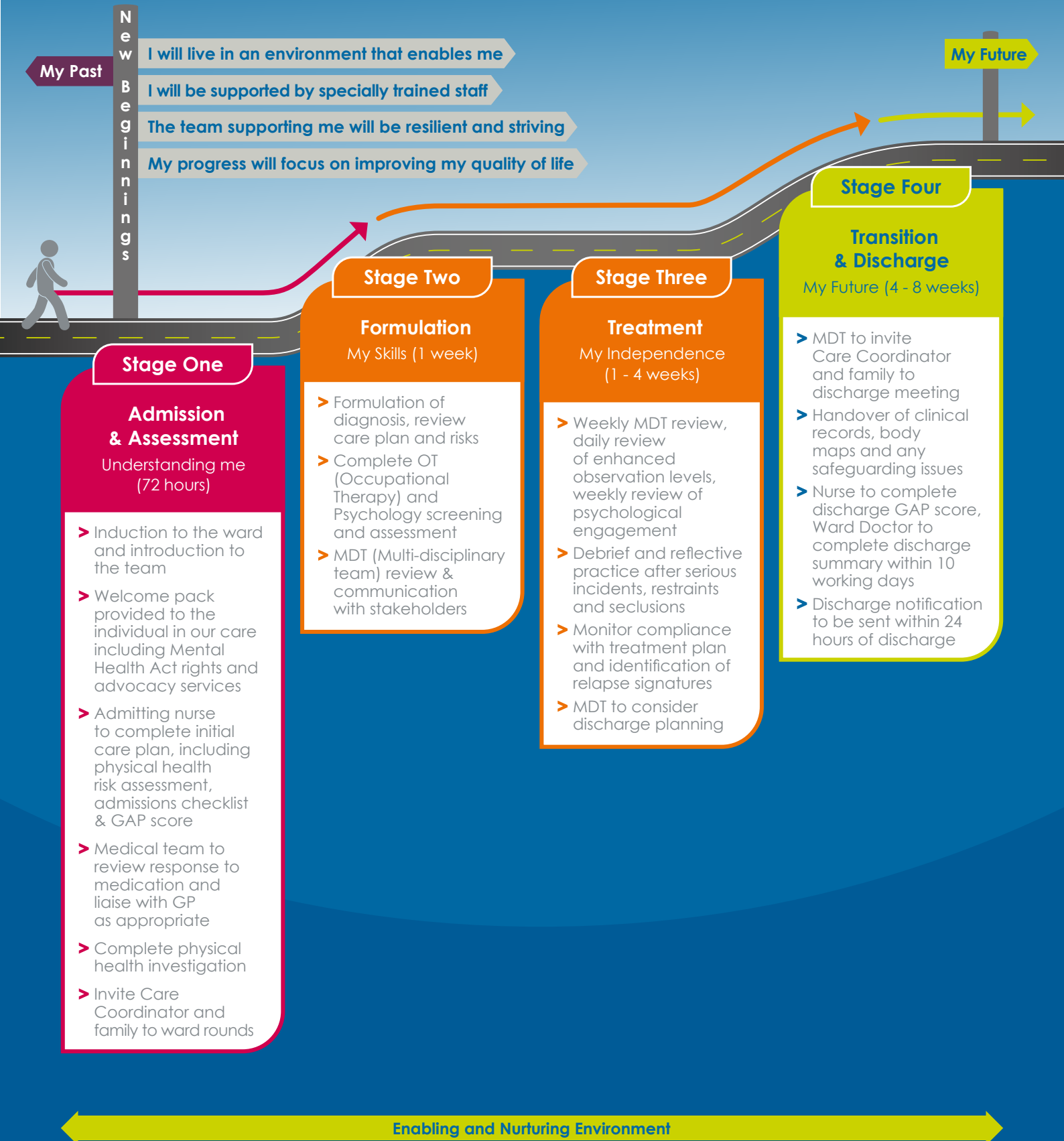
- > Women, aged 18+ years
- > Detained under the Mental Health Act or informal
- > Experiencing difficulties that present a risk to the well-being of themselves or others that cannot be treated in an open environment
- > Diagnoses may include:
  - Acute mental illness
  - Acute depressive illness
  - Psychosis
  - Schizophrenia
  - Bi-polar disorder
  - Personality disorder
  - Dual diagnosis
- > May present with co-morbid presentations:
  - Self-harm
  - Substance misuse issues





# Model of Care for our PICU / Acute Services

At Cygnet Health Care we are doing all we can to make a positive difference. To help guide us & ensure we are working together to achieve this we have collaboratively developed our Model of Care for our PICU / Acute Services. A guide that shows what we do as an organisation to meet the acute needs of adults requiring rapid access to mental health services, including those who may need an intensive care environment.



# Burleigh Ward

## Highly Specialised Personality Disorder Service



Female



18+ Years



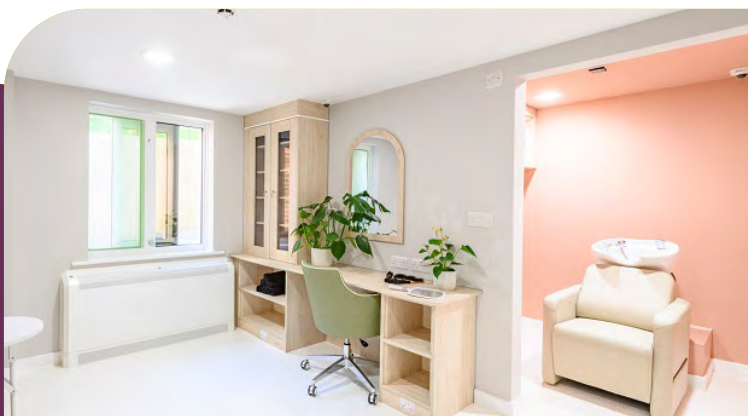
11 beds

**Burleigh Ward is Cygnet Hospital Kidsgrove's 11 bed highly specialised service providing assessment, treatment and rehabilitation for women with personality disorder and complex needs.**

Rehabilitation is provided in a therapeutic setting, with a level of security matched to individual need. The aim of the treatment, rehabilitation and re-socialisation programme is to equip the women in our care with the skills and confidence they need to navigate challenges that may come with returning to community or independent living.

Our dedicated clinical teams provide a multi-disciplinary approach to rehabilitation, empowering individuals to make positive choices to support recovery. This will include occupational therapy, social work and vocational training.

Burleigh Ward offers a variety of communal and one to one spaces, each thoughtfully designed to aid recovery. Dimmable lighting has been fitted to support sensory needs and preferences, creating a calming and comfortable environment for women with a personality disorder and autism.



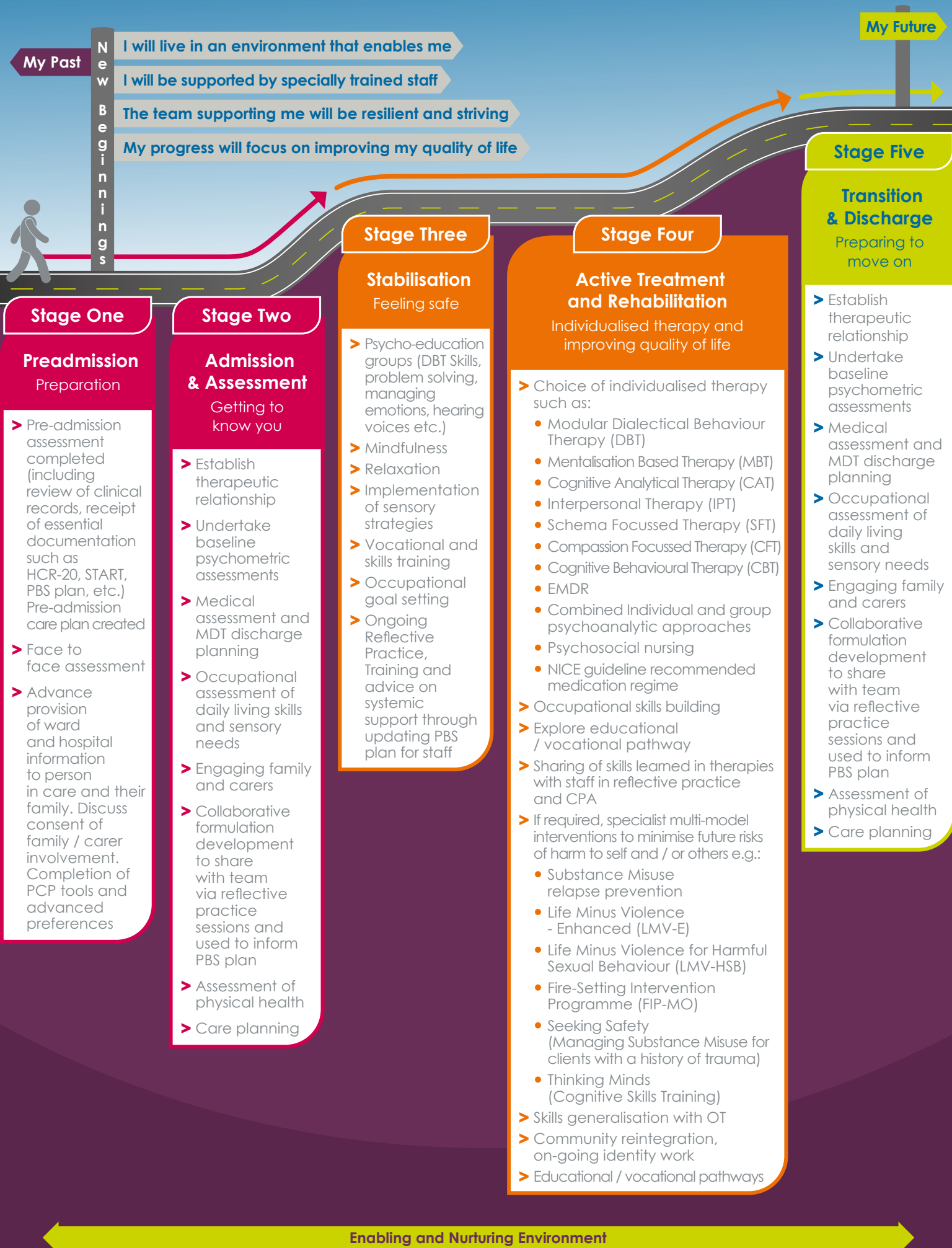
### Our service user profile:

- > Female, aged 18+ years
- > Diagnosis of personality disorder with complex mental health needs
- > May have a secondary diagnosis of autism
- > Subject to a section of the Mental Health Act
- > May have a history of substance misuse or dependency
- > May have experienced regular placement breakdowns
- > Sustained relational and social functioning problems
- > Forensic or non-forensic history
- > Capacity to engage

### Therapeutic approaches and assessments: (may include but not limited to)

- > Dialectical Behaviour Therapy (DBT) Informed Approach
- > Cognitive Behavioural Therapy (CBT)
- > Trauma Focused-Cognitive Behavioural Therapy (TF-CBT)
- > Compassion Focused Therapy (CFT)
- > Schema Focused Therapy (SFT)
- > Eye Movement Desensitisation and Reprocessing (EMDR)
- > Cognitive Analytic Therapy (CAT)
- > START Risk Assessment
- > Positive Behavioural Support Plans
- > Psychometric Assessments
- > Neuropsychological assessments
- > Ongoing Psychological Formulation
- > Wellness Recovery, Support and Action Plans

# Model of Care for our Personality Disorder Services



# Our Referral Process

## PICU / Acute referral process:

- 1 Referral made to Cygnet Bed Hub via **0808 164 4450** / **chcl.referrals@nhs.net**
- 2 Feedback provided on whether our services can meet the service user's needs within 1 hour of receipt of full clinical information
- 3 Admission agreed and arranged with referring team following confirmation of funding

## Personality disorder service referral process:

- 1 Referral made to regional Business Relationship Manager or Cygnet Bed Hub via **0808 164 4450** / **chcl.referrals@nhs.net**
- 2 Assessment arranged and undertaken via our assessment team
- 3 Feedback provided on whether our service can meet the individual's needs
- 4 Assessment pack formulated including care plans and funding information
- 5 Admission agreed and plans for transition arranged with referring team following confirmation of acceptance of placement

**We are able to take referrals 7 days a week.**

To make a referral please contact **your regional Business Relationship Manager**.

Alternatively, you can contact the Cygnet Bed Hub on: **0808 164 4450** / **chcl.referrals@nhs.net**.



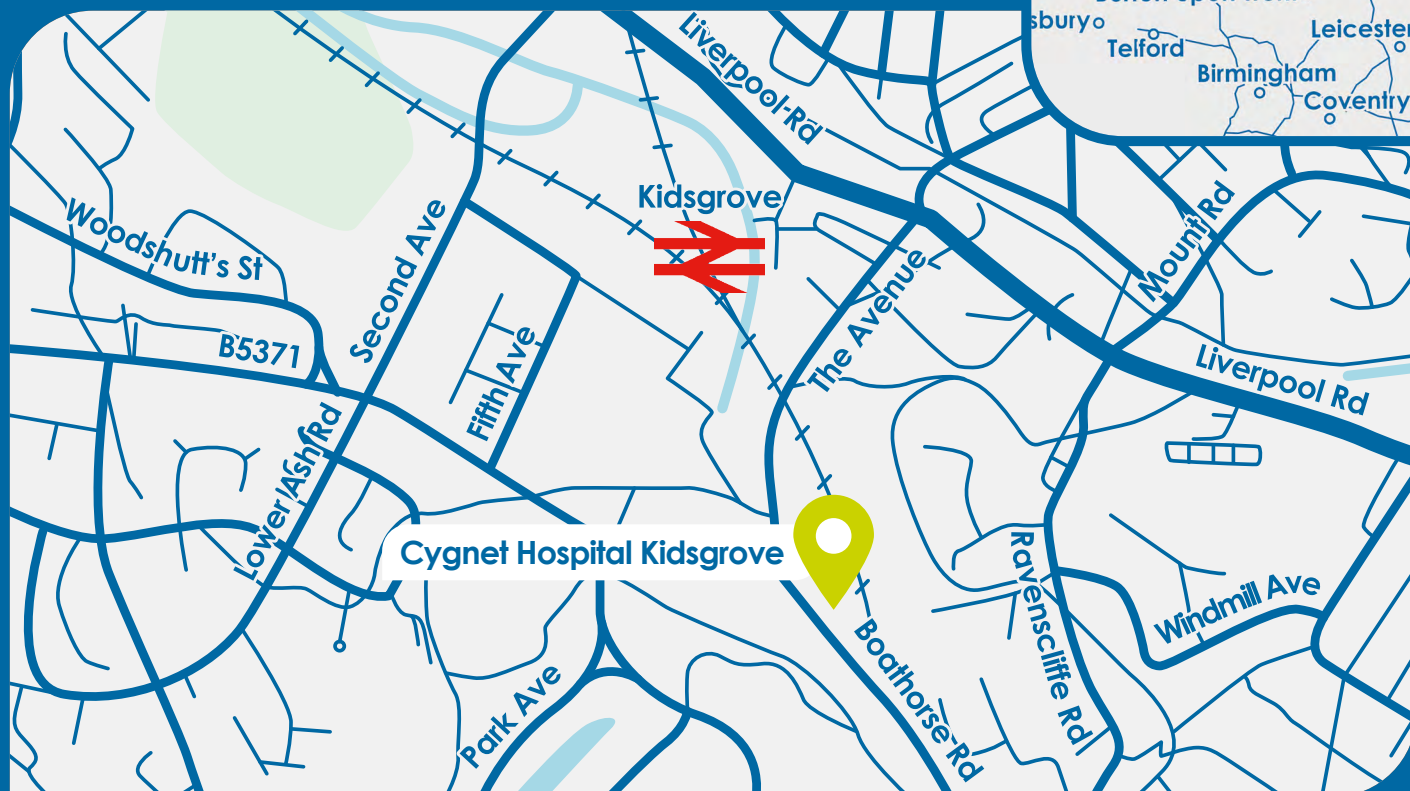




## Where are we?

### Cygnets Hospital Kidsgrove

Boathorse Road, Kidsgrove, Stoke-on-Trent,  
Staffordshire ST7 4JA



CYG-1708 | Date of Preparation: 12/05/25

Please visit [cygnetsgroup.com](https://cygnetsgroup.com) for more info | Follow us on social media:

Integrity

Trust

Empower

Respect

Care