



Your guide to Shaw Ward

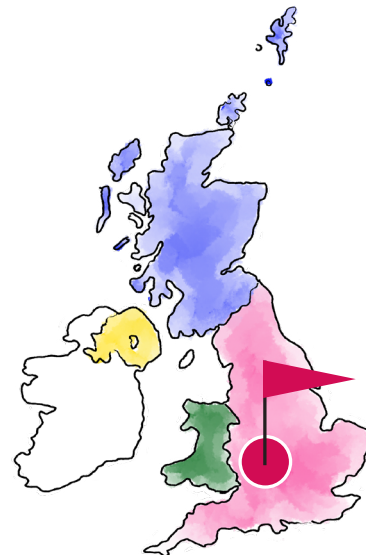
Acute

Shaw Ward

West Midlands

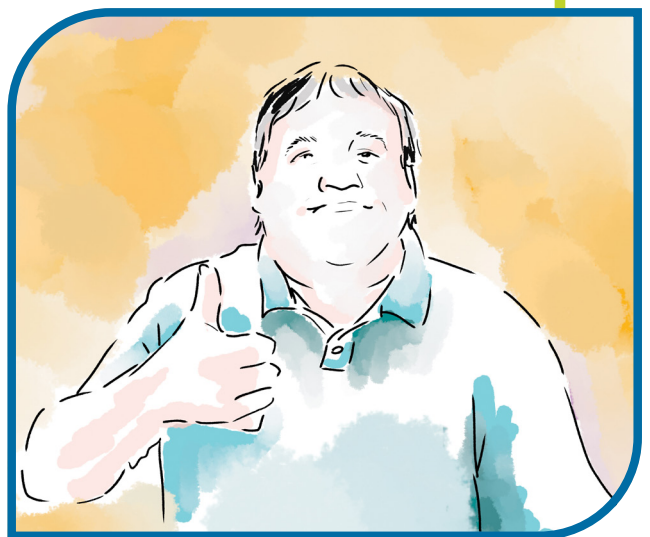
Registered address: 140 Wolverhampton Road,
Wolverhampton,
West Midlands,
WV11 1UH

Shaw Ward is in Cygnet Hospital Wolverhampton, this is owned by Cygnet. Cygnet Hospital Wolverhampton is located in the West Midlands.

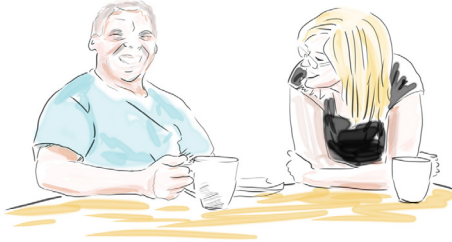


The people we
care for here are:

- Male
- 18+



People we support



At Shaw Ward we help you if you need immediate support for your mental health.

We will support you if you are an informal patient or have been detained under the Mental Health Act.

You may have been diagnosed with:

- Acute mental illness
- Acute depressive illness
- Psychosis
- Schizophrenia
- Bi-polar disorder
- Personality disorder
- Dual diagnosis

You may have a history of:

- Self-harm
- Substance abuse





Up to 17 people can stay at Shaw Ward. We want you to feel safe and comfortable while you stay here.

We will listen to what you want and need to help you in your recovery.

Our team



There are a range of staff available to you, they are dedicated to understanding you and helping you through the highs and lows of your recovery.

They will support you to manage your mental health, practice daily living skills and prepare for independent life back in the community.

Your notes

[illegible]

Address

Cygnat

4 Millbank, 3rd Floor,

Westminster,

London,

SW1P 3JA

Telephone

0207 123 5706

Website

www.cygnatgroup.com

CYG_ER_212 | Date of Preparation: 12/07/24
CYG_ER_212 | Date updated: 23/04/25



Accessible
Information
Standard