



# Your guide to **White House**

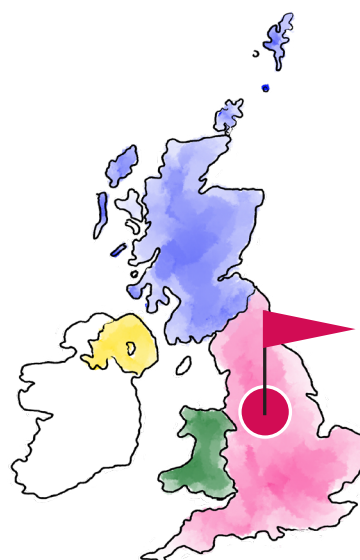
Acute

# White House

Lancashire

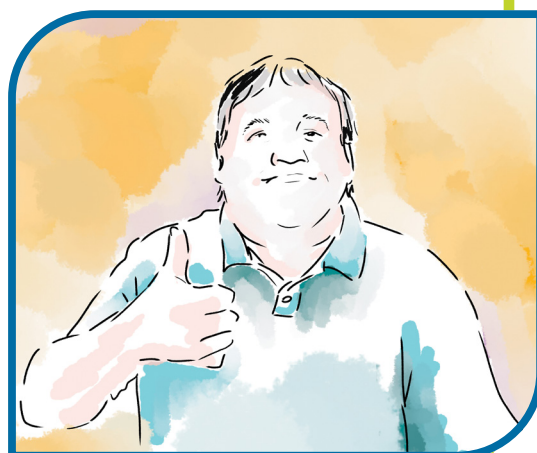
**Registered address:** Buller Street,  
Bury,  
Lancashire,  
BL8 2BS

White House is in Cygnet Hospital Bury, this is owned by Cygnet. Cygnet Hospital Bury is located in Lancashire.

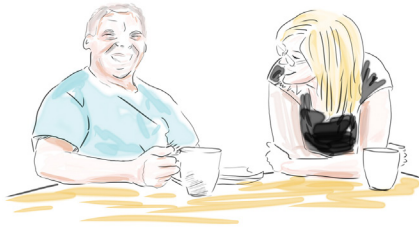


The people we care for here are:

- Male
- 18+



## People we support



At White House we help you if you need immediate support for your mental health.

We will support you if you are an informal patient or have been detained under the Mental Health Act.

You may have been diagnosed with:

- Acute mental illness
- Acute depressive illness
- Psychosis
- Schizophrenia
- Bi-polar disorder
- Personality disorder
- Dual diagnosis

You may have a history of:

- Self-harm
- Substance abuse





Up to 18 people can stay at White House. We want you to feel safe and comfortable while you stay here.

We will listen to what you want and need to help you in your recovery.

## Our team



There are a range of staff available to you, they are dedicated to understanding you and helping you through the highs and lows of your recovery.

They will support you to manage your mental health, practice daily living skills and prepare for independent life back in the community.

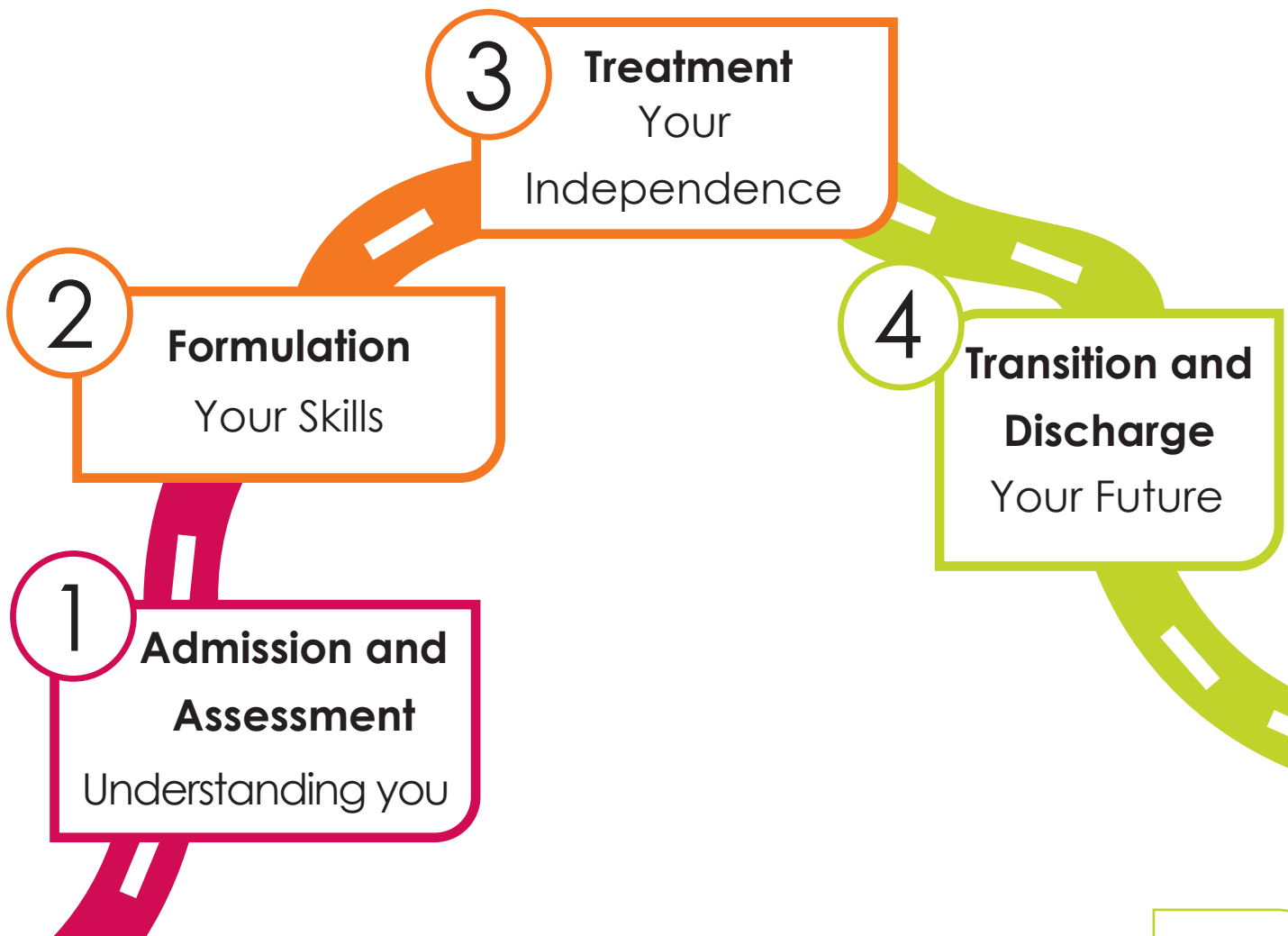
## Model of Care



Our Model of Care shows you how we will support you.

We will use assessments and treatments that are best suited to you. We will work with you to give you safe and effective care.

Our **Model of Care** has 4 stages these are:



## Your notes

---

---

---

---

---

---

---

---

---

---

---

---

---

---

---

---

---

---

---

---

Address

Cygnets  
4 Millbank, 3rd Floor,  
Westminster,  
London,  
SW1P 3JA

Telephone

0207 123 5706

Website

[www.cygnetsgroup.com](http://www.cygnetsgroup.com)

CYG\_ER\_212 | Date of Preparation: 30/05/24



Accessible  
Information  
Standard