



Your guide to Long Eaton

Day Services

Long Eaton

Nottinghamshire

Registered address: 4 Milton Street,
Long Eaton,
Nottinghamshire,
NG10 1DS

Long Eaton is owned by Cygnet. Long Eaton is located in Nottingham.

We have mixed gendered spaces:

- 18+



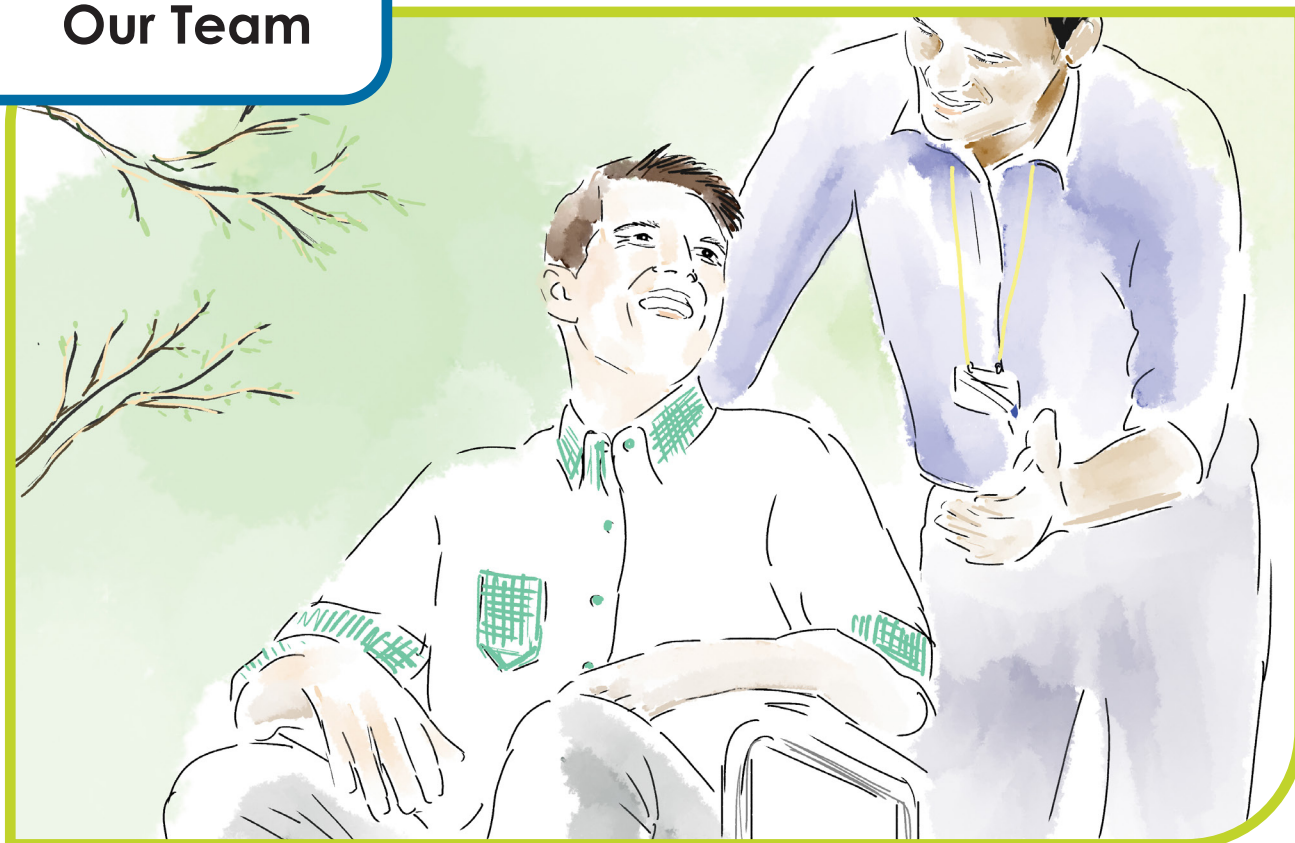


Up to 25 people can use the day service at Long Eaton.

We focus on activities that are based on social, sensory and support needs.



Our Team



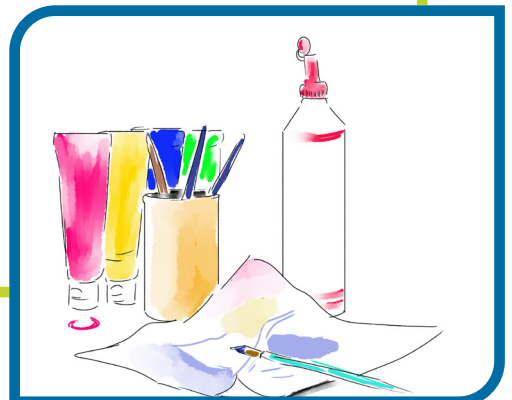
Our team are friendly and here to support your needs. They will help to plan activities and support you during trips out.

We focus on:

- Occupational Therapy
- Physiotherapy
- Speech and Language Therapy

Our Activities

- signing sessions
- social stories
- trips out
- bowls
- music sessions
- interactive flooring for games
- independent living skills
- arts and crafts
- sensory festival
- social care sports day

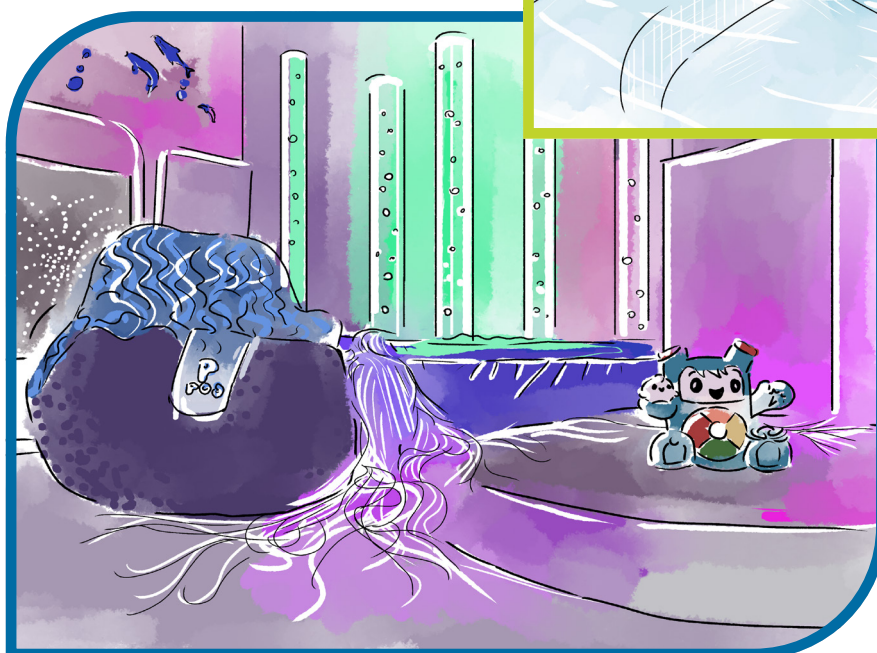
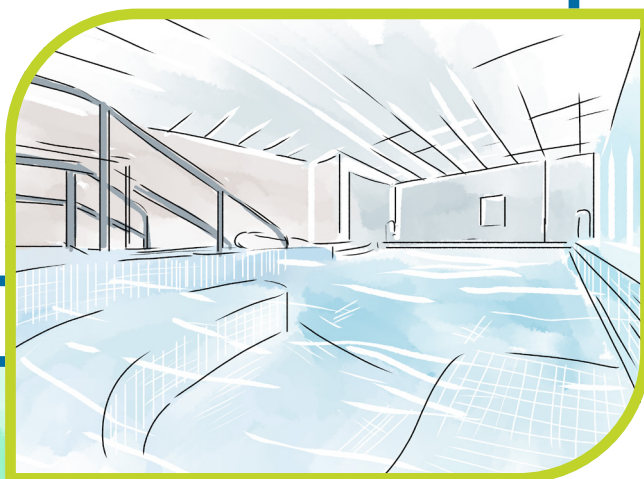


Shared spaces

We have shared spaces for you to spend your time and relax with us. We also have a quiet zone if you need this.

We have:

- sensory rooms
- arts and crafts areas
- soft zones
- cinema room
- a heated pool with a hoist (this helps people in and out of the pool)



Community

We have buses to take you out for trips and outings to nature parks, clubs and more. Here is a list of nearby places to visit:

- Elvaston Castle
- Derby Assembly Rooms
- Westfield Shopping Centre
- Local cinema, restaurants and pubs
- Nottingham town centre
- Leisure centre
- Twycross Zoo



Your notes

This image shows a single sheet of white paper with horizontal ruling lines. The lines are evenly spaced and run across the width of the page. There are no margins, text, or other markings on the paper.

Address

Cygnat

4 Millbank, 3rd Floor,

Westminster,

London,

SWIP 3JA

Telephone

0207 123 5706

Website

www.cygnatgroup.com



Accessible
Information
Standard