

Improving lives together

High Support Inpatient Rehabilitation (Level 2) Service for Women

Cygnet Delfryn Lodge,
Flintshire

Now taking
referrals

Cygnet Delfryn Lodge is our high support inpatient rehabilitation (level 2) service for women who have severe and enduring mental illness and who may have been detained under the Mental Health Act. Women placed with us often come from multiple placement breakdowns, failed treatment programmes or are stepping down from secure settings.

By combining a collaborative, multi-disciplinary approach, we deliver high-quality care using our unique 4 stage model of care for our mental health high support inpatient rehabilitation (level 2) services.



Female



18+ years



24 beds



Part of the
Welsh Framework

Our service user profile:

- > Detained under the Mental Health Act (1983) or informal
- > Primary diagnosis of mental illness with:
 - Complex comorbidities
 - Substance, drug and alcohol abuse
 - Treatment resistance
 - Behaviours that may challenge
- > Aiming for a return to community or community-based care
- > History of sexual abuse or domestic violence
- > Typical diagnoses: schizophrenia, schizoaffective disorder, bipolar affective disorder or depression
- > May have secondary diagnoses of mild learning disability, autism spectrum disorder or personality disorder
- > May have a forensic history and/or be stepping down from secure services
- > May have a history of repeated acute admissions

Our service at a glance

Set amid the rolling hills of Flintshire, Cygnet Delfryn Lodge benefits from not only being part of the beautiful Welsh countryside, but also being a short drive away from a lovely community with an extensive array of local amenities including, leisure centres, shops, restaurants and cafes.

Within the service, all bedrooms have en-suite facilities, some of which are situated on the ground floor to support those who may have mobility issues. We have dedicated therapy space, a gym, a beauty salon as well as spacious indoor and outdoor communal areas.

The service provides a safe and comfortable environment that promotes efficient rehabilitation and recovery. We are dedicated to understand, stabilise and break the traumatic cycles of relapse that can impact service users' lives.

Support is provided to help individuals prepare for independent living, employment and other vocational activities, with a strong focus on financial management and budgeting skills.

We offer more than just specialists and treatments, we value the service users as individuals, help enhance their interests and abilities, encourage them to share their views and help them unlock their talents and aspirations.

Next door we provide a 6 bed community rehabilitation (level 1) service, **Rhyd Alyn**. This service enables women to step-down from the hospital setting but still have some additional support.



Part of the Welsh Framework for which we have a Quality Assurance Rating Certificate of 3Q's



Average length of stay is 17 months



Salon Saturday



Physical health is a high priority providing a seamless service between us and primary care services

24 hour nursing team with least restrictive practice leads



People's Council meeting



Strong external links with Cyfle Cymru providing:



- > Mentorship
- > Qualifications and training
- > Real life work experience
- > Help to search and apply for jobs

Carers and family monthly meeting



Positive Healthcare Inspectorate Wales (HIW) report



On-site experienced Multi-disciplinary team (MDT) providing treatment, therapy and support



Engaging in the principles of Safewards



Onsite gym weekly visits from a personal trainer providing 1-1 support



Opportunity to develop and explore meaningful goals and occupations



Weekly pet therapy



Weekly reflective group meetings for staff



On-site Expert by Experience

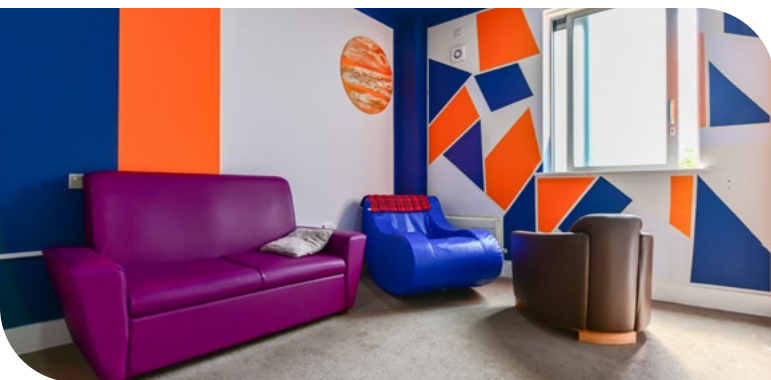


Our community links:

- > LearnDirect & Deeside College
- > Flintshire Local Volunteer Centre
- > Local places of worship
- > Sport facilities at Northop College
- > Cyfle Cymru
- > Photography and walking groups
- > Local beaches
- > Local market

Our facilities:

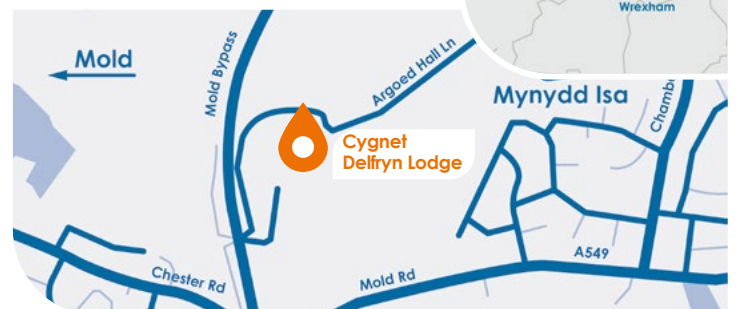
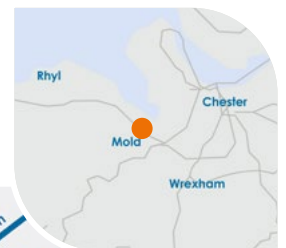
- > En-suite bedrooms
- > Learning centre with library and computers
- > Multi-faith room
- > Beauty salon
- > Gym
- > Activities room
- > Therapy kitchen
- > Laundry room
- > Spacious communal garden with seating



Where are we?

Cygnnet Delfryn Lodge
Argoed Hall Land, Mold,
Flintshire, Wales
CH7 6FQ

Phone number
01352 707220



CYG-1055 | Date of Preparation: 20/02/24

For more information or to make a referral please call 0808 164 4450 or email chcl.referrals@nhs.net

Our referral process:

- 1 Referral made to Cygnnet referrals team via 0808 164 4450/chcl.referrals@nhs.net
- 2 Assessment arranged and undertaken via our management team
- 3 Feedback provided on whether our service can meet the individual's needs
- 4 Assessment pack formulated including care plans and funding information
- 5 Admission agreed and plans for transition arranged with referring team following confirmation of acceptance of placement

Please visit cygnnetgroup.com for more info | Follow us on social media:



Integrity

Trust

Empower

Respect

Care