

Integrated Safeguarding

#**hello** my name is...

Kenny Gibson

National Head of Safeguarding for NHS



@KennyGibsonNHS @NHSSafeguarding



Find out more



Safeguarding

A resource for healthcare professionals, carers and citizens to increase their awareness and understanding of safeguarding



Order www.qrcoderesources.co.uk



MAAPP
MULTIDISCIPLINARY AGENCY APP

FutureNHS kahootz
Collaboration Platform

Safeguarding Everyone
Protecting Children, Young People and Adults at Risk



Follow #NHSSafeguarding @NHSSafeguarding

WWW
Signpost victims, survivors,
and perpetrators of domestic
violence to IDVA or Respect
phone line on:08088024040
Repost FGM to Police

Listen and bear
witness to what
people tell you

LISTEN

Child Sexual Abuse;
online, community
and interfamilial; child
sexual exploitation

Believe and bear
witness to what
people say...

BELIEVE

Signpost modern slavery
to the modern slavery helpline
0800 0121700

Serious Violence:
duty on ICB

- Radicalisation
- Serious Violence
- Sexual Abuse
- Self Harm
- Fabricated injuries and illness

- County Lines
- Human trafficking
- Modern Slavery

Take Action!

DO SOMETHING

- Non-recent sexual abuse

- Cuckooing
- Scams
- Mental Capacity
- Self Neglect
- Lonliness & Isolation

This is what
we need to
deliver

The Principles
of Adult
Safeguarding

- Empowerment
- Prevention
- Proportionate
- Protection
- Partnership
- Accountable

TRAUMA INFORMED

What is your
unique journey?

PRACTICE

CARE &

What matters
to you?

How safe do you
feel at home?

STRENGTHS BASED APPROACH

- Sexual Abuse
- Domestic Violence
- FGM - Female Genital Mutilation
- Coercive Control

BIRTH

SUSTAINING RECOVERY



HEALTHY RELATIONSHIP WHEEL

PREGNANCY

CHILDREN IN CARE

SCHOOL

VULNERABLE GROUPS INCLUDE:

- Children in Care
- People Transitioning Care Leavers to Adulthood
- Young Carers
- Homeless People
- People Seeking Asylum
- People who are Neurologically Diverse

TRANSITION

YOUNG ADULTS

CARE LEAVERS

WORKING AGE ADULTS

RESTORATIVE PRACTICE

TRANSITIONAL SAFEGUARDING
TRANSITIONAL SAFEGUARDING
It's a vulnerable time!

TRANSITION

walking in the shoes of perpetrators

AGING WELL LATER LIFE

There is legislation to protect victims

It's everyone's business!

LEGISLATION HUMAN RIGHTS ACT 2000

RIGHT TO LIFE, LIBERTY AND SECURITY

RIGHT TO RESPECT FOR PRIVATE AND FAMILY LIFE

PARTNERSHIPS

- Local Safeguarding Partnerships
- Multi-Agency Safeguarding Hubs
- Schools
- Community Safety Partnerships
- Primary Care Networks
- Safeguarding Boards
- Integrated Care Partnerships

Practitioners are well respected and trusted.

WE WORK WITH YOU TO SUSTAINABLY RECOVER IN YOUR COMMUNITY

drawn by New Possibilities.



developed in collaboration with NHS Safeguarding

Children Social Care Reforms £200m investment

Programme of work

Due date

1. Kinship Strategy (and guidance for employers)

15th December

2. Children's Social Care National Framework (stat guidance)

3. Working Together to Safeguard Children revised stat guidance

4. Children's Social Care Data and Digital Strategy, inc CPIS

5. Information Sharing Advice for safeguarding practitioners
inc Somerset template

14 December 2023
June 2024

6. Regional Care Co-operatives & Fostering Hubs

20th December 2023

7. Family First, Family Networks, Family Help (3 evolving programmes)

January 2024

8. Child Death Overview Panel (CDOP), National Child Mortality Database (Kennedy Guidance); Learning Disability Mortality Review (LeDeR)

April 2024

9. Multi-Agency Safeguarding Hubs (MASH)

April 2024

Child Social Care Reforms - £200m investment

Family First Pathfinder wave 1:

- Dorset
- Lincolnshire
- Wolverhampton

Family Networks wave 1:

- Brighton & Hove
- Sunderland
- Telford & Wrekin
- Gateshead

Family Networks wave 2:

- Staffordshire
- Hartlepool
- Hammersmith & Fulham.

Wave 3 yet to be agreed – ICBs will co-sign.

An overview of both the pathfinder and pilot can be found here:

[Families first for children \(FFC\) pathfinder programme and family networks pilot \(FNP\) - GOV.UK \(www.gov.uk\)](https://www.gov.uk/government/news/families-first-for-children-ffcp-pathfinder-programme-and-family-networks-pilot-fnp)

The new Regional Care Co-operatives

The new (25/09/2023) 27 LAs receiving **Staying Close** funding.

[Staying Close 2023 to 2025: application guide for local authorities \(publishing.service.gov.uk\)](https://publishing.service.gov.uk/government/uploads/system/uploads/attachment_data/file/1214212/staying-close-2023-to-2025-application-guide-for-local-authorities.pdf)

This list is subject to change prior to the publishing of the Section 31 grant letter

Bedfordshire	Bolton		Cheshire East
Croydon		Darlington	Derby
Derbyshire	Devon		Doncaster
Enfield		Essex	
	Gloucestershire		
Hartlepool	Hertfordshire	Hillingdon	
Knowsley		Leeds	
	Leicester		
Lincolnshire	Northamptonshire Children's Trust		
Nottinghamshire	Redcar and Cleveland	St Helens	
	Wokingham	Wolverhampton	

Other consultations	Due date
<ul style="list-style-type: none"> Independent Inquiry into Child Sexual Abuse (IICSA), inc duty to report with professional sanctions 	January 2024
<ul style="list-style-type: none"> Independent Inquiry into Child Sexual Exploitation (IICSE) 	January 2024
<ul style="list-style-type: none"> National Panel's Review into Safeguarding of Children with Disabilities and Complex Health Needs (Hesley Doncaster) 	27 th November 2023
<ul style="list-style-type: none"> National Panel's Review into Child Sexual Abuse in a Family Environment 	Unknown
<ul style="list-style-type: none"> Prevent Independent Review (IR) 	<u>Prevent Duty Guidance 2023</u>
<ul style="list-style-type: none"> Domestic Homicide Review (DHR) review 	November 2023

The NHS foundation and offer – in-place now, in-place by June 2024

- **Intercollegiate document (ICD) learning** – revision by December 2023
- Request for XGov sponsored child safeguarding Information Standards Notice (ISN)
- **Child Protection-Information Sharing (CP-IS) + all UASC Sc20 + E1.**
 1. NHS Lancashire and South Cumbria ICB (North West Health Commissioning Region) supplier is Tiani using HL7 API
 2. NHS Birmingham & Solihull ICB (Midlands Health Commissioning Region) supplier is Intersystems using HL7 API
 3. NHS Humber & North Yorkshire ICB (Northeast and Yorkshire ICB) supplier is interweave integration point TBC
 4. NHS North East & North Cumbria ICB (Northeast and Yorkshire ICB) supplier is Cerner integration point TBC
- What about Sc 17, Sc 85 uploaded into CPIS, including Harms outside Homes
- ICP (as corporate parents) to use CPIS as a case-load management tool for care leavers covenant (employment and career) and care leavers offer (see records, receive free prescriptions and social prescribing)
- **Data sharing –actively supporting Somerset template** with Bradford, Bristol, Buckinghamshire, Durham, Lancashire, Sussex (pan three partnerships - with Sussex Police and Sussex ICB), Peterborough and Cambridge (pan – partnership, 2 LAs)
- **NHS integrated safeguarding dashboard including new (September 2023) Initial and Review Health Assessments data collection**

The NHS foundation and offer – in-place now, in-place by June 2024

- **ICB Joint Forward Plan (JFP) for including medical assessments, initial and review health assessments with nurses (primary care health screening) for Unaccompanied Asylum-Seeking Children (UASC)**
- **NHS Strategic Safeguarding Community of Practice April-September 2024**
- **Duty to collaborate re serious violence**
- Duty to report child sexual abuse
- Care experience person death reviews 18 to 25 years

Needs of disabled children and young people

Currently social care needs for disabled children are assessed and provided for under the Children Act 1989 section 17 (and Chronically Sick and Disabled Persons Act 1970)

- **Provision of services for children in need, their families and others.**
- (1) It shall be the general duty of every local authority (in addition to the other duties imposed on them by this Part)—
 - (a) to safeguard and promote the welfare of children within their area who are in need; and
 - (b) so far as is consistent with that duty, to promote the upbringing of such children by their families, by providing a range and level of services appropriate to those children's needs.
- (10) For the purposes of this Part a child shall be taken to be in need if—
 - (a) he is unlikely to achieve or maintain, or to have the opportunity of achieving or maintaining, a reasonable standard of health or development without the provision for him of services by a local authority under this Part;
 - (b) his health or development is likely to be significantly impaired, or further impaired, without the provision for him of such services; or
 - (c) he is disabled,
- and "family", in relation to such a child, includes any person who has parental responsibility for the child and any other person with whom he has been living.
- (11) For the purposes of this Part, a child is disabled if he is blind, deaf or dumb or suffers from mental disorder of any kind or is substantially and permanently handicapped by illness, injury or congenital deformity or such other disability as may be prescribed; and in this Part—
 - "development" means physical, intellectual, emotional, social or behavioural development; and
 - "health" means physical or mental health.

Disabled children also offered care and support through other elements of the Act

- S.20 arrangements
- S.47 child protection inquiries
- S.31 / 38 interim / care orders
- S.25 Welfare criteria

- Children often supported through early help / family help before s.17 assessment completed.

Our aspirations for the future



Place and space safeguarding data & local practitioner intelligence

Lived Experience Narrative

Inclusive NHS for victims, survivors, perpetrators & offenders

Trauma Informed Practice
Contextual safeguarding
Strengths based approach

NHS Safeguarding & Data Sharing



**Every death & safeguarding review has recommended data sharing.
No health staff have ever been found guilty of data sharing breach.**

All commissioned care organisations have a duty, if not contractual obligation, to share aggregated population data.
Every practitioner must seek informed consent to share their concerns.

If the client declines, the practitioner may still use clinical prerogative and choose to share for reasons of reasonable and lawful public safety or the client's own health and well-being.

The practitioner must record their decision to share after client has decline in the patients record, as per Registration body & GDPR.

ICO guidance

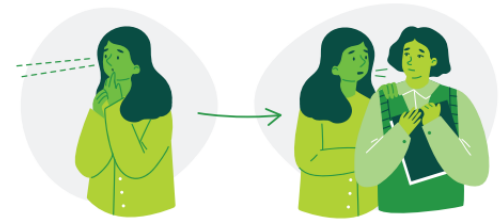
‘A 10-step guide to sharing information to safeguard children:

- **Step 1:** Be clear about how data protection can help you share information to safeguard a child.
- **Step 2:** Identify your objective for sharing information, and share the information you need to, in order to safeguard a child.
- **Step 3:** Develop clear and secure policies and systems for sharing information.
- **Step 4:** Be clear about transparency and individual rights.
- **Step 5:** Assess the risks and share as needed.
- **Step 6:** Enter into a data sharing agreement.
- **Step 7:** Follow the data protection principles.
- **Step 8:** Share information using the right lawful basis.
- **Step 9:** Share information in an emergency.
- **Step 10:** Read our data sharing code of practice.’

[A 10-step guide to sharing information to safeguard children | ICO](#)
24th Sept 2023



**Share information
to protect a child.**



Has something **made you concerned** for the safety or wellbeing of a young person?

Share that information with someone who can help protect them from harm.



It can be **more harmful not to share information** that is needed to protect a child or young person.



In an emergency or urgent situation, **don't hesitate to share information** that's needed to protect a child or young person.



You will not get into trouble with the ICO if you share information to protect a child or young person.

ico.org.uk/10steps

NHS Safeguarding Integrated Dashboard by April 2024 and beyond

Non-Statutory Reporting for ICB by April 2024

ICB implementation heatmaps

Q1=Joint Forward Plan

Q2=Mental Capacity

Q3 = Domestic abuse & Serious Violence Duty

Q4=Child Sexual Abuse / Exploitation

- CPIS numbers by ICB
- Domestic Homicide Reviews (DHRs)
- Child Death Overview Process (CDOP)/National Child Mortality Database (NCMD)
- NHS Safeguarding Commissioning Assurance Toolkit
 - Safeguarding Case Review Tracker
- Looked After Children Initial / Review Health Assessments (IHA/RHA)
- Deprivation of Liberty Safeguards – authorised, not authorised, withdrawn noting delays, deferrals & declines

**National
Commissioning Data
Repository (NCDR) &
Statutory Reporting
by providers from
April 2023**

**Prevent
Female Genital
Mutilation
(IS & Enhanced)**

Trauma Informed Reporting via partners by April 2024

Modern Slavery & Human
Trafficking

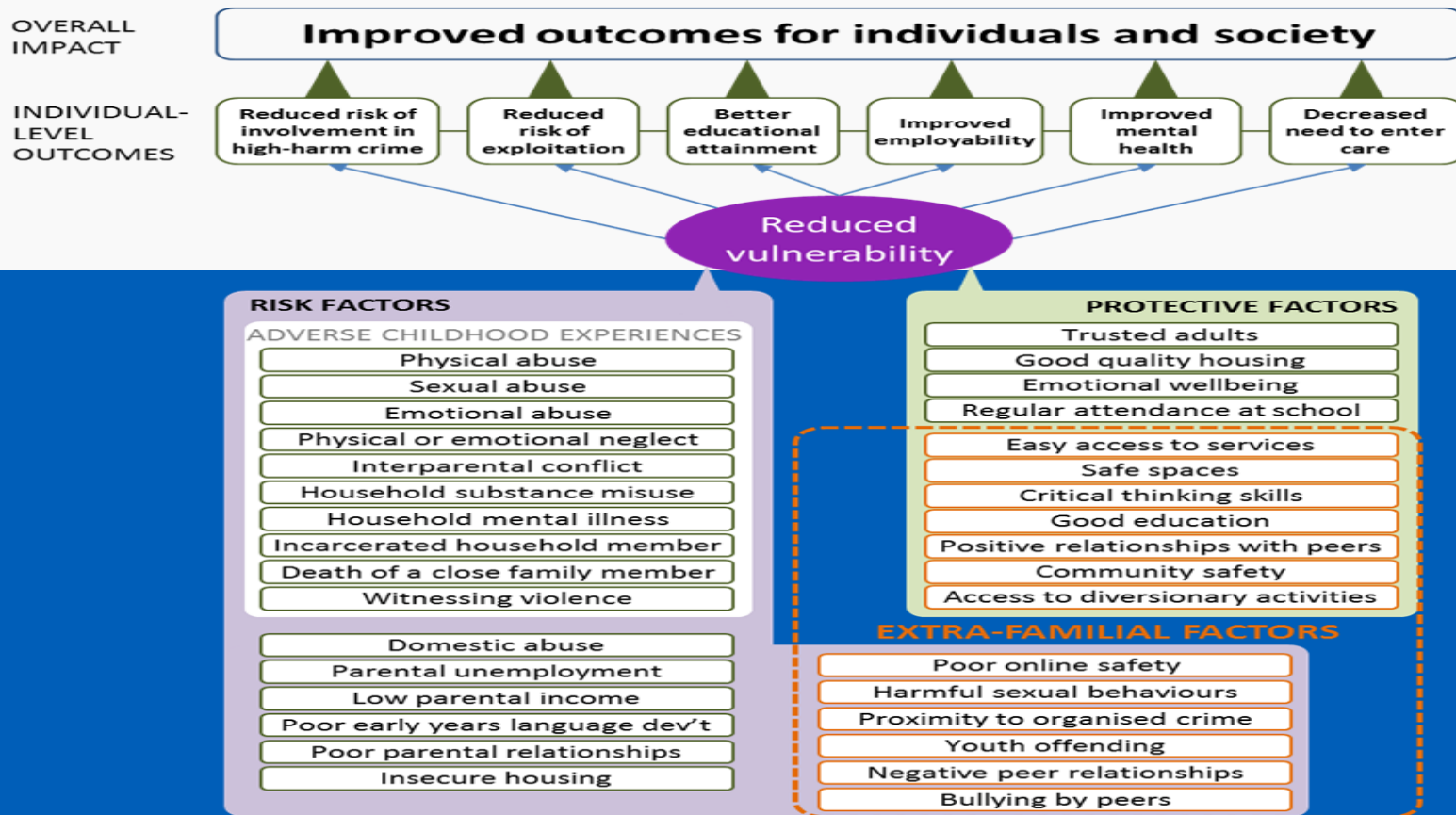
Multi-Agency Risk Assessment
Conferences (MARAC)

Independent Domestic
Violence Advisor (IDVAs)

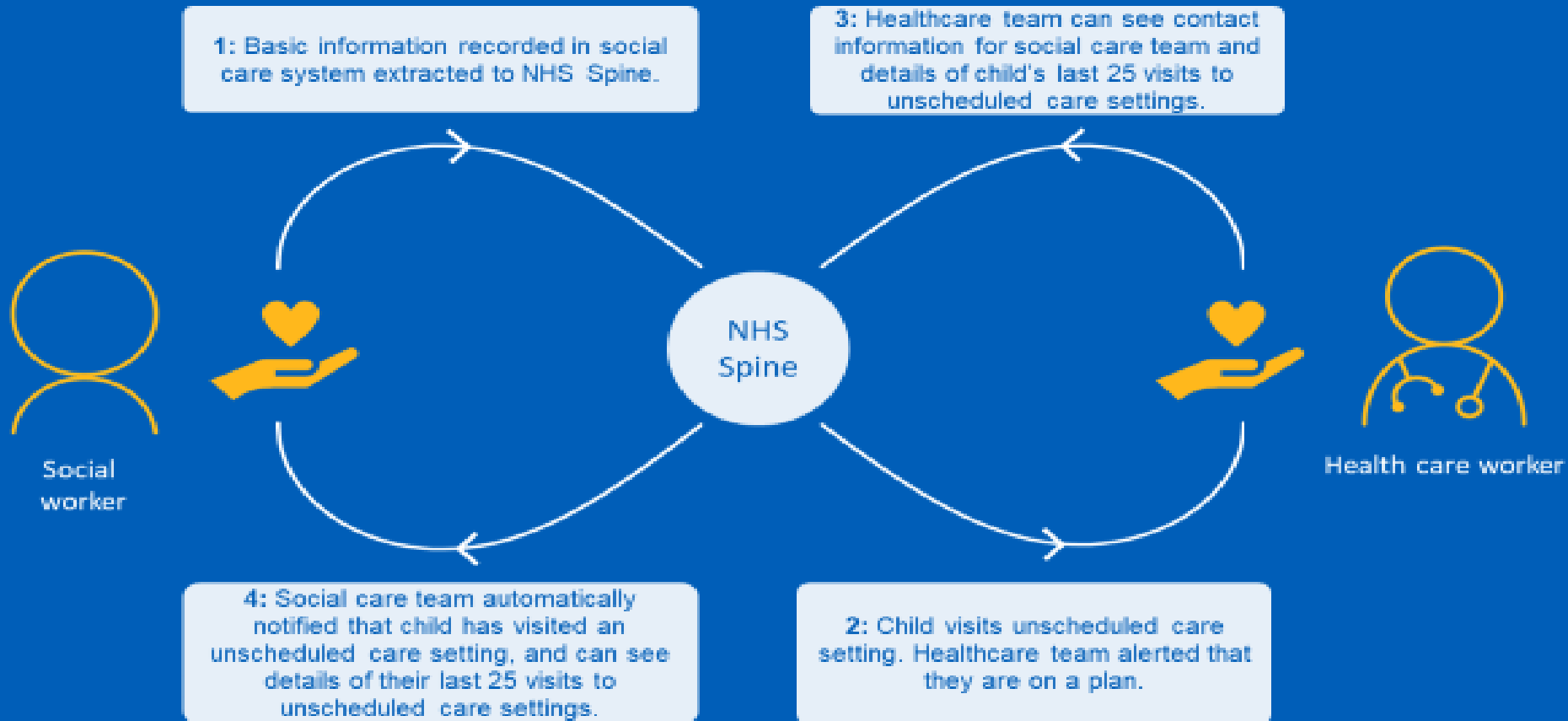
Channel Panel

Child Sexual Abuse /
Exploitation

Intelligent targeted Interventions



Child Protection Information System (CPIS)



Our NHS Offer to Care Leavers



Create a standard offer to all children leaving care, including those who are out of area

Raise awareness of contextual safeguarding by place and space, via safeguarding partnerships and VRUs

Access to medical/care records records (with support)

Free prescriptions for care leavers

Utilise social prescribing for emotional wellbeing/gym/swim memberships

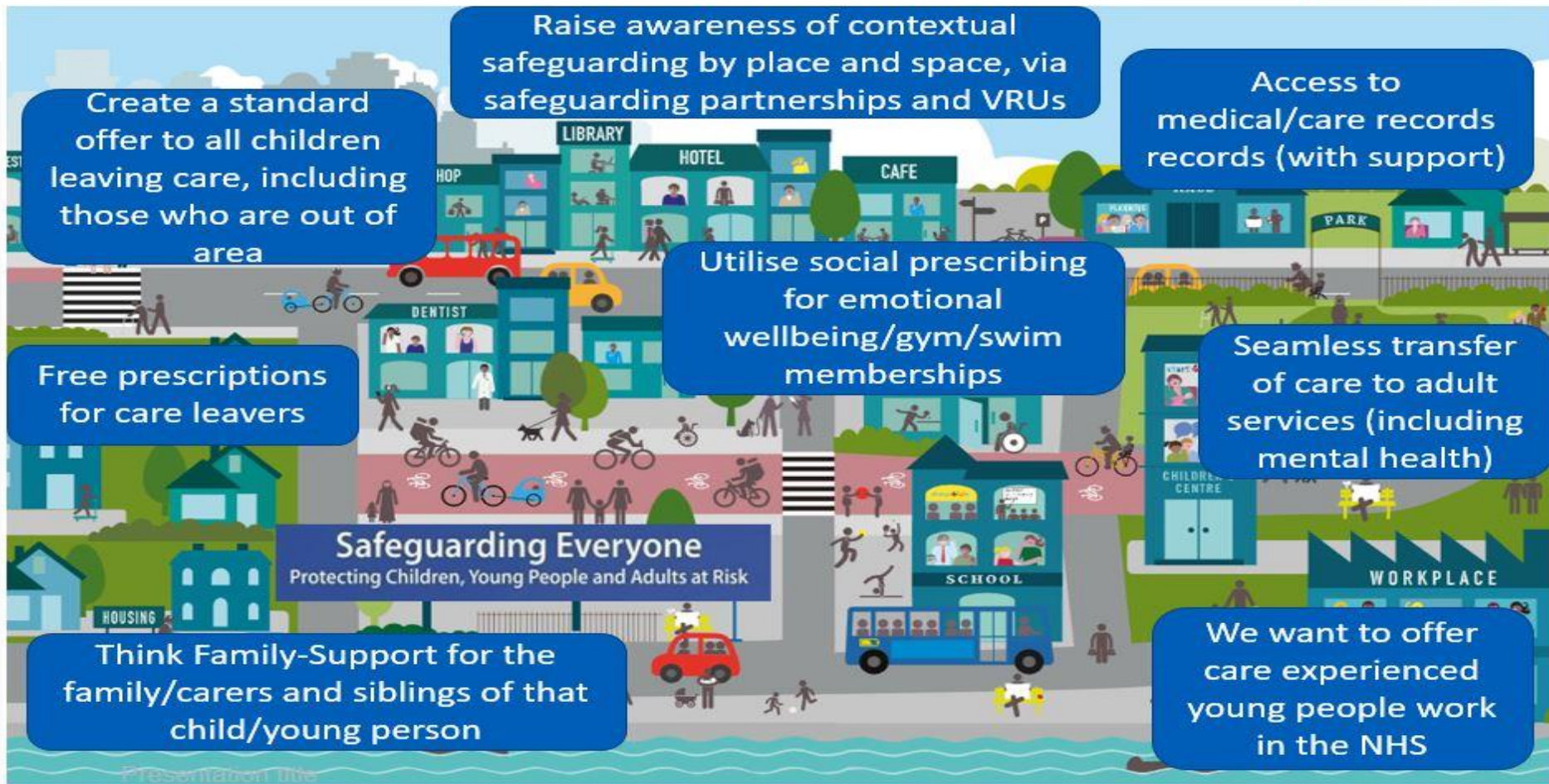
Seamless transfer of care to adult services (including mental health)

Safeguarding Everyone

Protecting Children, Young People and Adults at Risk

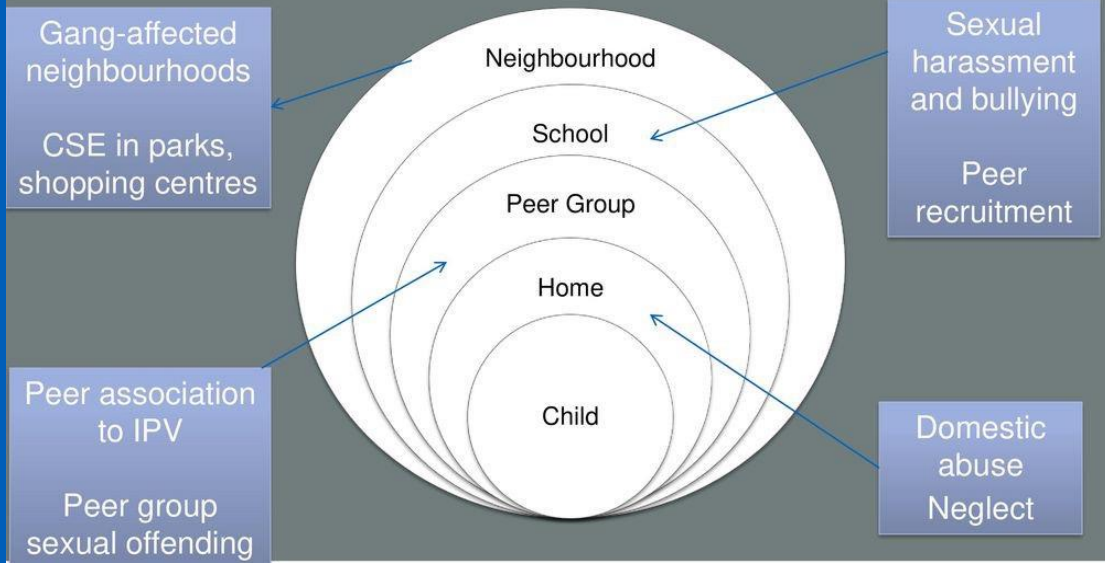
Think Family-Support for the family/carers and siblings of that child/young person

We want to offer care experienced young people work in the NHS



Contextual Safeguarding has several layers

Contextual nature of exploitation and abuse



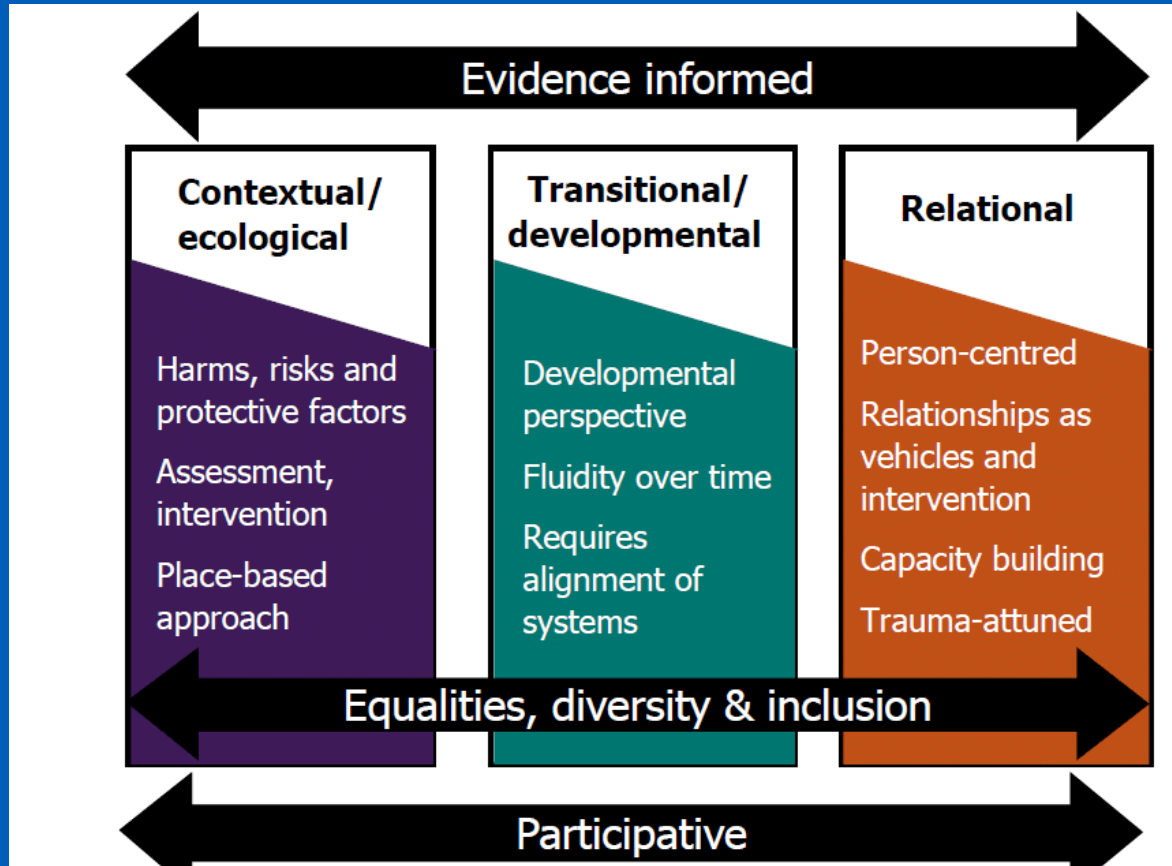
Have you considered making a place or space referral?

Have you collaborated with Community Safety Partnerships or Violence Reduction Units?

Transitional Safeguarding



Bridging the gap:
Transitional Safeguarding
and the role of social work
with adults
(researchinpractice.org.uk)



research
in practice

Funded by



Department
for Education

NHS Safeguarding social movement



Learning Together Week June 2022 - NHS Safeguarding Workspace - FutureNHS Collaboration Platform

Centre of
expertise
on child
sexual abuse



University of
Huddersfield
inspiring global professionals

Secondary victims of online child sexual abuse

This study by Professor Rachel Armitage and Dr Nadia Wager at University of Huddersfield analysed lived experiences of secondary victims of online child sexual abuse shared in the Stop It Now Family and Friends Forum.

Who are secondary victims of online child sexual abuse?

Secondary victims are family members of those who are arrested for accessing indecent images of children.

- 9% of respondents demonstrated subsyndromal levels of PTSD
- 70% of the respondents reported levels of symptoms that are indicative of a diagnosis of post-traumatic disorder
- 65% of the respondents reported symptom levels that are sufficient to suppress their immune system's functioning

To find out more, contact Professor Rachel Armitage: r.a.armitage@hud.ac.uk

School of Human and Health Sciences
@researchiaace

What can you do?



- **Be curious & ask the question**
 - How safe do you feel at home / on-line?
 - What happened to you?
 - What matters to you?
 - How can we help make you thrive?
- **Avoid retraumatising**
- **Reflect on incidents, learn from excellence & celebrate your achievements**