

Improving lives together

Low Secure Mental Health Service for Men

Saunders Ward,
Cygnnet Hospital Stevenage, Hertfordshire

Good

Accepting
Referrals



Saunders Ward supports men in a low secure setting. The service aims to enable individuals to reintegrate into the community and is part of the male care pathway at Cygnnet Hospital Stevenage, which includes our medium secure service on Peplau Ward.

Our low secure services provide intensive rehabilitation designed to support individuals to move safely along their care pathway in a safe environment. There is a dynamic programme of therapy and activity, designed to support the transition between inpatient services and the community.

The aim of our secure services is to help individuals learn how to manage their mental health and reinforce their daily living skills, to prepare them for life in a community setting, or in the least restrictive environment possible.

All wards at Cygnnet Hospital Stevenage work closely together to provide a seamless secure care pathway for men and men. Working closely with NHS case managers and commissioners, we are able to provide solutions for service users requiring step-down service options across our national network of rehabilitation and specialist services.



Male



18+ years



15 beds

Our service user profile:

- > Men, aged 18+ years
- > Detained under the Mental Health Act, including those under Ministry of Justice restrictions
- > Requiring assessment and treatment in a secure environment
- > Presenting active or potential risk to others
- > Have a diagnosis of:
 - Severe and enduring mental health problems
 - Psychotic disorder
 - Schizoaffective disorder
 - Schizophrenia
- > May be exhibiting dangerous and challenging behaviour
- > May have dual diagnosis with substance misuse

Prison Transfer Programme

We offer a specialised three month prison transfer programme, for assessment of prisoners whose mental health needs cannot be met in the prison environment.

- > Referrals and assessment: We provide a rapid response to referrals, assessment within the prison environment, quick decision on suitability for transfer within five working days and liaison with MOJ over transfer warrants
- > Comprehensive inpatient assessment: Twelve week assessment programme including full diagnostic and risk formulations, IQ and neurological assessments, treatment plan and prison pathways if necessary



Therapy Programme

Therapies are offered on both an individual or group format with the aim to support the men to feel safe, make sense of their difficulties, and engage in more safe and prosocial behaviours in response to feelings of distress. The therapies available include:

- > Cognitive Behavioural Therapy (CBT)
- > Compassion Focused Therapy (CFT)
- > Cognitive Analytic Therapy (CAT)
- > Radically Open Dialectical Behaviour Therapy (RO-DBT)
- > Dialectical Behaviour Therapy (DBT) informed skills training
- > Specialist trauma therapies available, include:
 - Cognitive Processing Therapy (CPT)
 - Prolonged Exposure Therapy for PTSD (PET)
 - Eye Movement Desensitization & Reprocessing (EMDR)
- > Specialist offence focused therapies available, include:
 - Substance Misuse Programme
 - Offence chain analysis and Good Lives Model work regarding violent and/or sexual offences
 - Fire-setting Intervention Programme for Mentally Disordered offenders (FIP-MO)

Multidisciplinary (MDT) team consisting of:

- > Psychologist
- > Assistant psychologist
- > Specialty doctor
- > Occupational therapist
- > Occupational therapy assistant
- > Responsible clinician
- > Social worker
- > Clinical team leaders
- > Ward manager

Multi-gym and outdoor football pitch



En-suite bedrooms



Regular inter-ward competitions and events



DBT informed skills groups

- mindfulness, interpersonal effectiveness, distress tolerance and emotional regulation



Activity/art room

where individuals can create, pottery and art



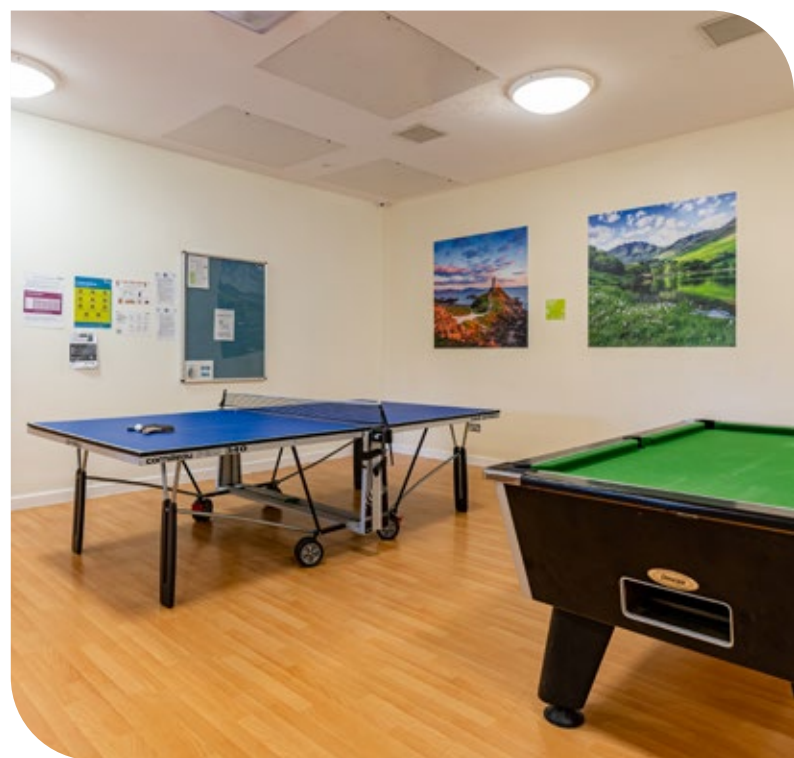
Vocational programme enabling service

USER to develop a range of job specific skills with a variety of roles



ADL Kitchen

to support skill development



For more information or to make a referral please call **0808 164 4450** or email chcl.referrals@nhs.net

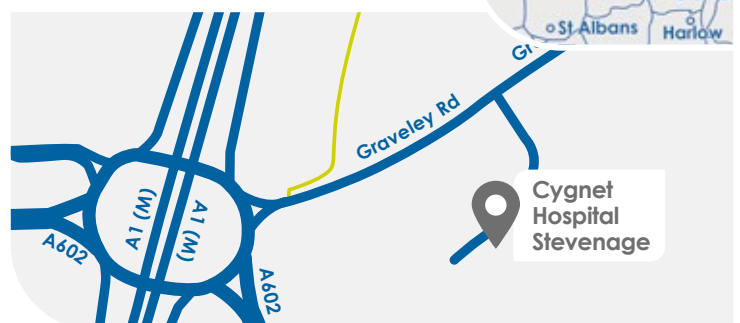
Our referral process:

- 1 Referral made to Cygnet referrals team via **0808 164 4450/chcl.referrals@nhs.net**
- 2 Assessment arranged and undertaken via our management team
- 3 Feedback provided on whether our service can meet the individual's needs
- 4 Assessment pack formulated including care plans and funding information
- 5 Admission agreed and plans for transition arranged with referring team following confirmation of acceptance of placement

Where are we?

Cygnet Hospital Stevenage
Graveley Road, Stevenage,
Hertfordshire SG1 4YS

Phone number
01438 342 942



CYG-1357 | Date of Preparation: 03/08/23

Please visit cygnetgroup.com for more info | Follow us on social media:    

Integrity

Trust

Empower

Respect

Care