

Your guide to Cygnet Sedgley Lodge

Mental Health Rehabilitation

Your guide to Cygnet Sedgley Lodge

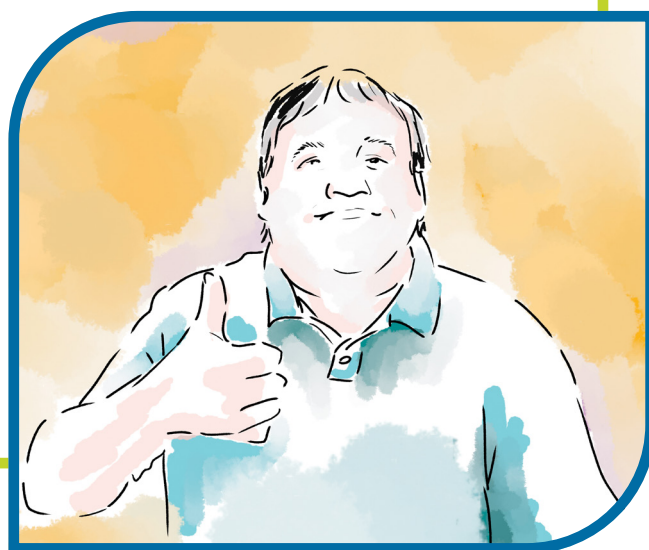
West Midlands

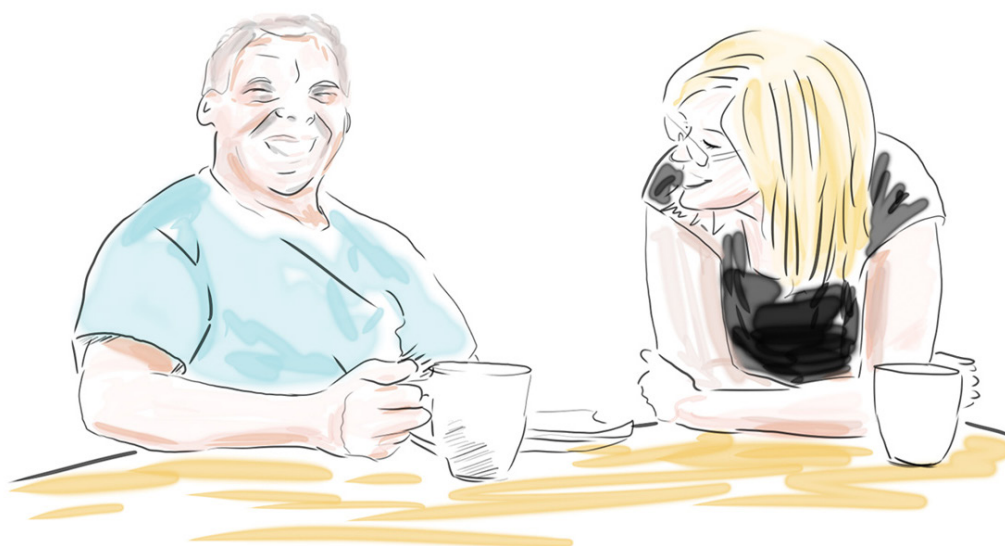
Registered address: Cygnet Sedgley Lodge
Woodcross Street,
Wolverhampton,
West Midlands,
WV14 9RT

Cygnet Sedgley Lodge is owned by Cygnet.
Cygnet Sedgley Lodge is located in the West Midlands.

The people we
care for here are:

- Male
- 18+





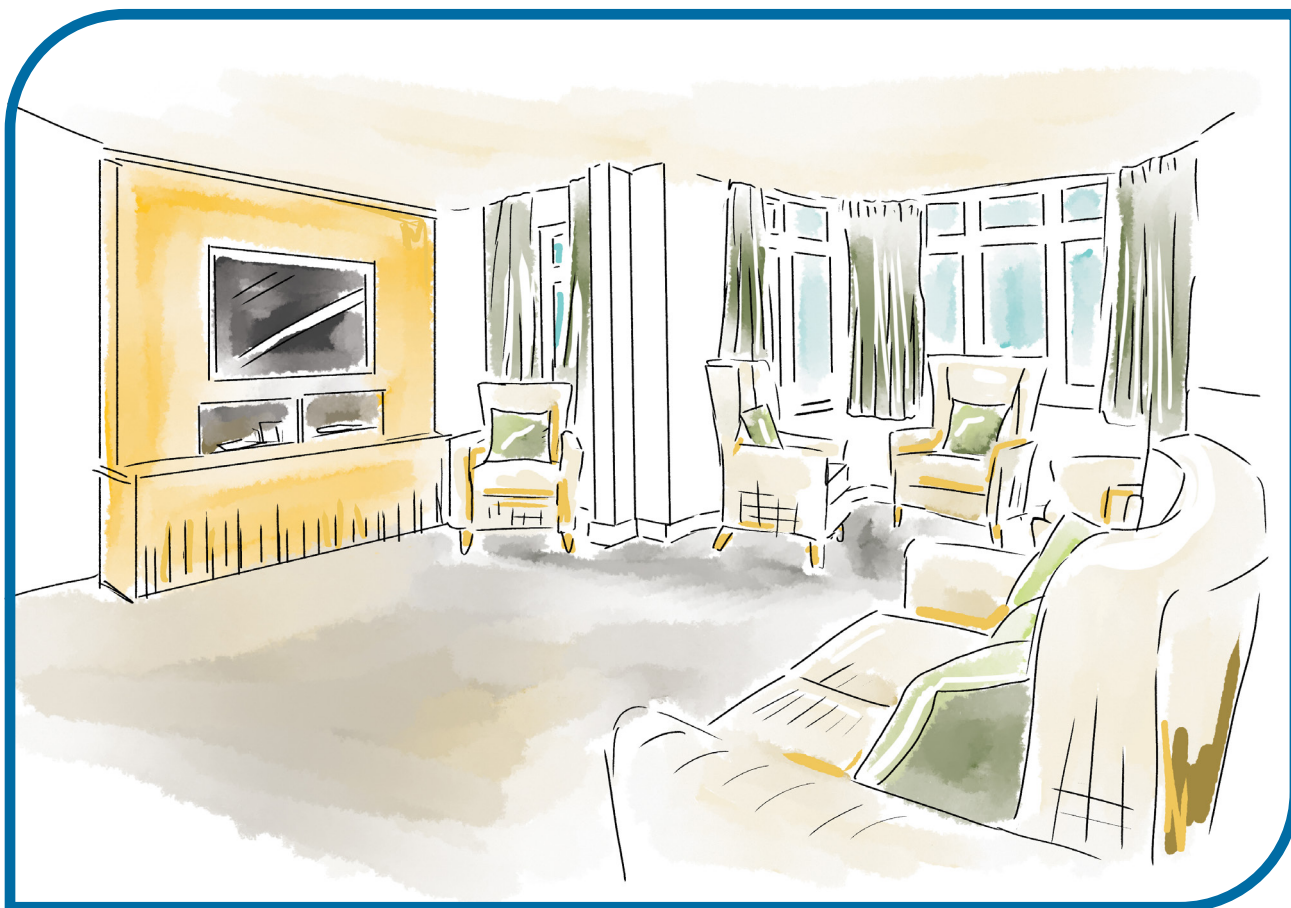
Up to 14 people can stay at our mental health service at Cygnet Sedgley Lodge.

We aim to provide a safe environment that helps your recovery by focusing on personal space, privacy and dignity. We run a community based programme which will allow you to be more independent.



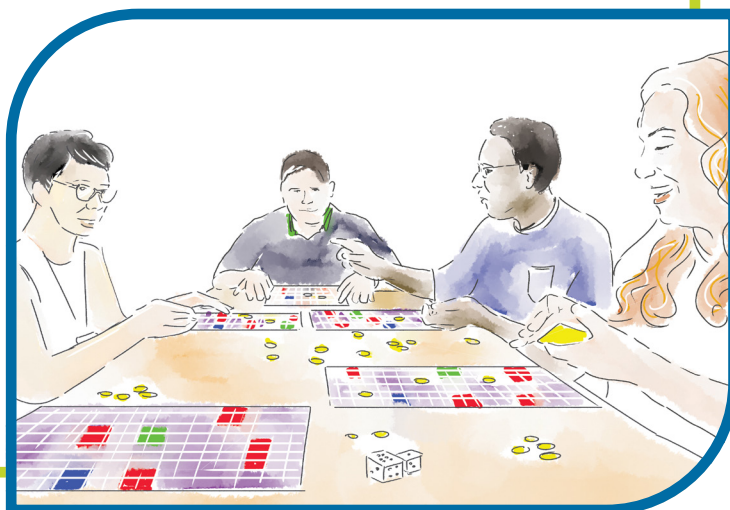
Living spaces

You will have your own bedroom and bathroom. You can make this space your own and fill it with your things.



You will share dining and lounge areas with other people.

We also have a variety of activity areas and an IT cafe.



Our team



There are a range of staff available to you. They will be supportive and encouraging.

We will make sure you have what you want and need to maximise your independence and help you in your recovery.

Who is here to help you?

- Responsible clinician
- Ward doctor
- Psychologist
- Independent advocate
- Nursing team
- Social worker
- Occupational Therapy team

All service users are registered with the local GP.



Goals

We will work with you to make a **person-centred plan**. We will talk to you about your needs and aims and jointly make a plan to make you be as independent as possible. Our aim is to help you in the best way for you.



Our facilities

We will try to make your stay with us as pleasant as possible. Some of the facilities available to you are:

- En-suite bedrooms
- Therapy kitchen
- Variety of activity areas
- Dining room
- Living room
- Enclosed garden
- Gym
- IT café



Activities



You will have the opportunity to take part in internet sessions, arts and crafts, creative writing and other educational groups.



We also have areas for you to enjoy some gardening.

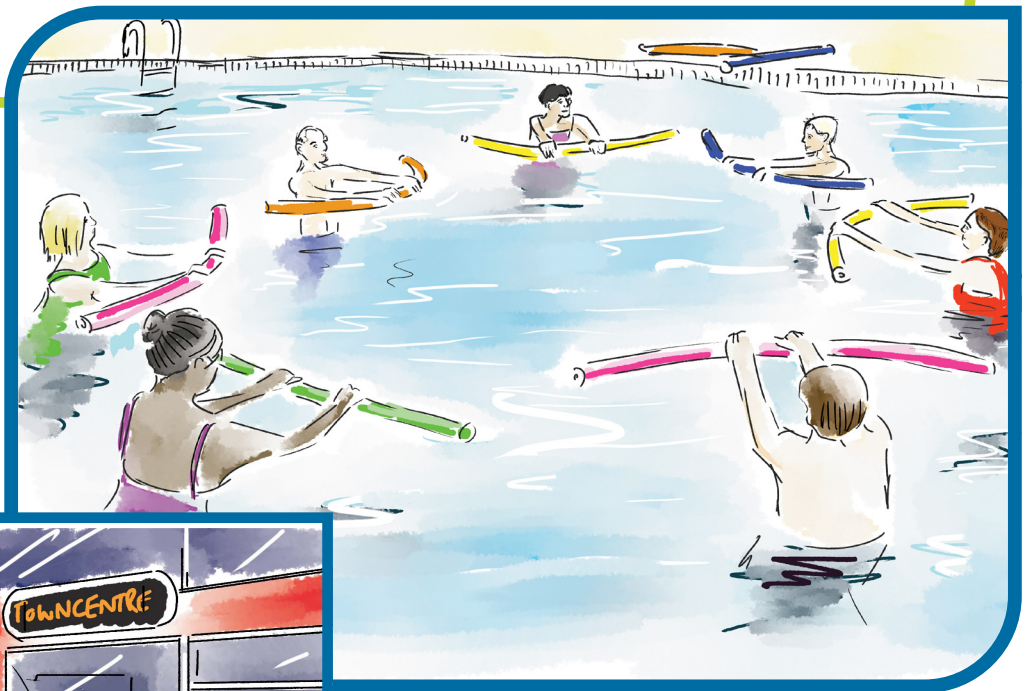


We have weekly community meetings and if you want you can be involved with the **People's Council**. This is a meeting where people get involved in what happens at Cygnet Sedgley Lodge. You can share your opinions and have your say about what you think.

Community

When the time is right you are encouraged to go out into the community. Nearby we have:

- Wolverhampton town centre
- Sedgley Village
- Gyms
- Golf
- Swimming baths
- Shops



Your notes

[illegible]

Address

Cygnat

4 Millbank, 3rd Floor,

Westminster,

London,

SW1P 3JA

Telephone

0207 123 5706

Website

www.cygnatgroup.com

CYG_ER_068 | Date of Preparation: 19/06/23



Accessible
Information
Standard