

Cygnnet Joyce Parker Hospital

Child and Adolescent Mental Health Services
(CAMHS) hospital in Coventry for young people





Introduction

Cygnet Joyce Parker Hospital is our state-of-the-art Child and Adolescent Mental Health Services (CAMHS) hospital in Coventry. The service supports young people aged between 12 and 18 with mental health needs in psychiatric intensive care, acute and low secure environments. The aim of the service is to help young people stabilise and return home as soon as possible.

The location of the hospital extends our national network of CAMHS services into the West Midlands.

The development of the service including the environment and names of the wards has been co-produced with CAMHS experts by experience, carers and young people from our other CAMHS services within Cygnet.

All young people will be able to continue their education through access to our on-site Ofsted-registered school, Summit School, if required.

The services provided at the hospital are:

Mermaid Ward

10 bed CAMHS
PICU service

for young people
with severe mental illness

Now Taking Referrals

Faun Ward

8 beds CAMHS
PICU Service
for girls with severe
mental illness

NEW Now Taking Referrals

Pixie Ward

14 bed CAMHS
Acute service
focused on supporting
young people to return home

Now Taking Referrals

Bespoke Packages

We are able to provide bespoke packages of care for young people who may struggle within a busy ward environment.

Joyce Parker

Joyce Parker was a caring and dedicated support worker at one of our services in the West Midlands who sadly passed away during the COVID pandemic. In her honour and remembrance we have named the hospital after her.

Dragon Ward

10 bed CAMHS
Low Secure service
supporting young people in
a low secure environment

Now Taking Referrals



Our service at a glance



Multi-disciplinary Team (MDT)

- > Hospital director
- > Ward managers
- > Consultant psychiatrist
- > Clinical psychologist
- > Occupational therapist
- > Speech and language therapist
- > Clinical team leaders
- > BACP registered therapists
- > Nurses
- > Healthcare assistants
- > Social workers
- > Specialist educational support



Therapies and interventions

- > Self-harm treatment
- > Cognitive Behavioural Therapy (CBT)
- > Dialectical Behaviour Therapy (DBT)
- > Anger management
- > Anxiety management
- > Mindfulness groups
- > Individual sessions – coping skills and trauma work
- > Family therapy
- > Daily living skills such as cooking, budgeting and personal care
- > Future planning
- > Community and social involvement
- > Pet therapy
- > Young People's Council



Activities

- Individuals will have access to a variety of activities during their time at the hospital. These activities are tailored for each young person and outlined in a daily activities timetable. These activities may include;
- > Art and crafts
 - > Sports
 - > Charity events such as coffee mornings and summer fairs
 - > Day trips including the seaside and zoo
 - > Individual and group community activities
 - > Board games
 - > Xbox and Wii



Facilities

- > En-suite bedrooms
- > Spacious communal areas
- > Outdoor sports areas and a gym
- > On-site Ofsted-registered school, Summit School
- > Training kitchen to support skills development
- > On-site Café called the Phoenix Café
- > IT suite



Our accreditations



Unicorn Ward at Cygnet Hospital Sheffield is the first CAMHS PICU service in the country to become CAMHeleon accredited. CAMHeleon celebrates and promotes best practice and the things that really make a positive difference to young inpatients, identifying small changes that have a big impact.



All our CAMHS wards at Cygnet Hospital Bury - Primrose Ward, Wizard House, Buttercup Ward and Mulberry Ward, are accredited by the Quality Network for Inpatient CAMHS (QNIC).

Mermaid Ward CAMHS PICU Service



Mixed Gender



12-18 Years



10 Beds

Accepting
Referrals

Faun Ward CAMHS PICU Service



Female



12-18 Years



8 Beds

NEW Now Taking
Referrals

Mermaid Ward is our CAMHS PICU service for young people with severe mental illness. Faun Ward is our new CAMHS PICU service for girls aged 12-18 with severe mental illness. The focus on both wards is on stabilisation with a view on enabling transition to a general acute ward or back into the care of community services. The services provide robust care and support for young people displaying significant levels of challenging behaviour.

Referrals are accepted from all over the UK. We offer a rapid response system and aim to respond to referral requests within an hour of receiving adequate clinical information.

Our service user profile:

- > Detained under the Mental Health Act
- > Diagnosis of:
 - Psychosis
 - Self-harm and/or suicidal ideation
 - Depression or anxiety
 - Emerging personality disorder
 - Substance misuse – providing there is a primary diagnosis of a mental health problem
 - Emotional, social and behavioural difficulties
 - Borderline/mild learning disability as a secondary diagnosis
 - Autism spectrum disorders, with a mental health primary diagnosis



Average length of stay is 8 to 12 weeks



Pixie Ward

CAMHS Acute Service



Mixed Gender



12-18 Years



14 Beds

Accepting Referrals

Pixie Ward is a 14 bed general adolescent acute services, providing support for young people, both male and female, and is focused on helping them return home. The service is dedicated to helping young people maintain their school placements, if possible, and admissions can be either formal or informal.

There is a diverse educational programme teaching a range of subjects available at the on-site school, Summit School.

We offer a rapid response system, and aim to respond to referral requests within an hour of receiving appropriate clinical information. Referrals are accepted from all over the UK, many of which are emergency admissions.

Pixie Ward has full Multi-disciplinary Team (MDT) input including a specialist doctor, psychologist, social worker, occupational therapist and educational support from full-time teachers and educational support staff.

Our service user profile:

- > Detained under the Mental Health Act or informal
- > Diagnosis of:
 - Psychosis
 - Self-harm and/or suicidal ideation
 - Depression or anxiety
 - Emerging personality disorder
 - Substance misuse – providing there is a primary diagnosis of a mental health problem
 - Emotional, social and behavioural difficulties
 - Borderline/mild learning disability as a secondary diagnosis
 - Autism spectrum disorders, with a mental health primary diagnosis
 - May have a forensic history



Dragon Ward

CAMHS Low Secure Service



Mixed Gender



12-18 Years



10 Beds

Accepting
Referrals

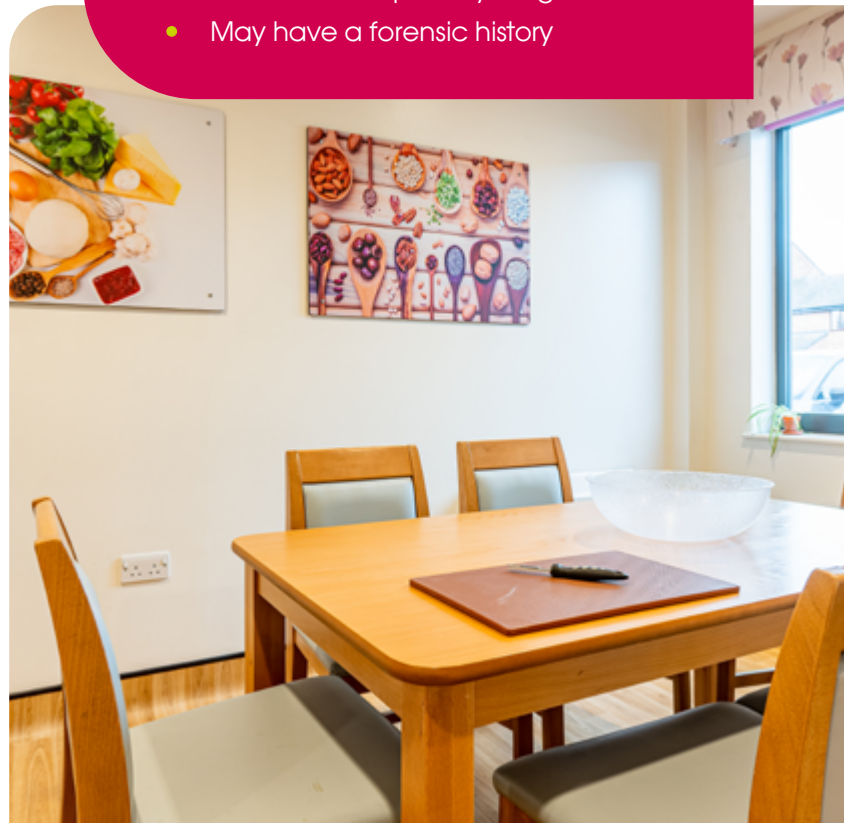
Dragon Ward at Cygnet Joyce Parker Hospital is a CAMHS low secure service for young people with complex mental health needs.

The ward will support young people who may need a longer stay in an inpatient setting within a low secure environment. The service will focus on working with young people to understand their mental health, their risks and support their recovery, enabling them to be successfully discharged to a less restrictive environment and to reduce the possibility of relapse and likelihood of requiring a secure service in the future. There is a diverse educational programme teaching

There is a diverse educational programme teaching a range of subjects available at the on-site school, Summit School.

Our service user profile:

- > Detained under the Mental Health Act
- > Diagnosis of:
 - Psychosis
 - Self-harm and/or suicidal ideation
 - Depression or anxiety
 - Emerging personality disorder
 - Substance misuse – providing there is a primary diagnosis of a mental health problem
 - Emotional, social and behavioural difficulties
 - Borderline/mild learning disability as a secondary diagnosis
 - Autism spectrum disorders, with a mental health primary diagnosis
 - May have a forensic history



Service user and parent feedback and reviews

“

Thank you so much for helping – the staff have been amazing and after seeing our son today and seeing the amazing improvement we feel like we can actually relax now and that our son is in good hands and being cared for.

Parent - Mermaid Ward

”

“

Thanks for putting the kids first, thanks for always checking on us. It doesn't go unnoticed

Young Person – Pixie Ward

”

“

I just want to use this opportunity to express gratitude for the care and support provided to my son by your organisation and to the Education Team for their amazing and relentless efforts. Even when he was very sick, you listened to parent's advice about his love for education and that was his first engagement and in our opinion; the steppingstone towards his healing. And you also contacted his last school settings to get holistic picture of his educational needs and how you can support his needs.

Parent

”

“

The staff at Joyce Parker Hospital were kind and caring. The care they gave to my daughter during her inpatient admission was very person centred, and specific to her needs. They managed her risks in much kinder and appropriate way than experienced in the previous unit. Communication with us as a family was fantastic. We were called every evening with an update on her day, and also a weekly ward round was held which we were able to join via Microsoft teams. The MDT input was much appreciated and everybody was determined to make our daughters admission go as smoothly as possible.

Thank you Joyce Parker Hospital staff for all you did for our daughter.

Parent

”

“

I am training to be an electrician, thanks to all the help and support you gave me during my stay. Here is £20 from my first wage to buy some biscuits. BIG THANK YOU

Young Person – Pixie Ward

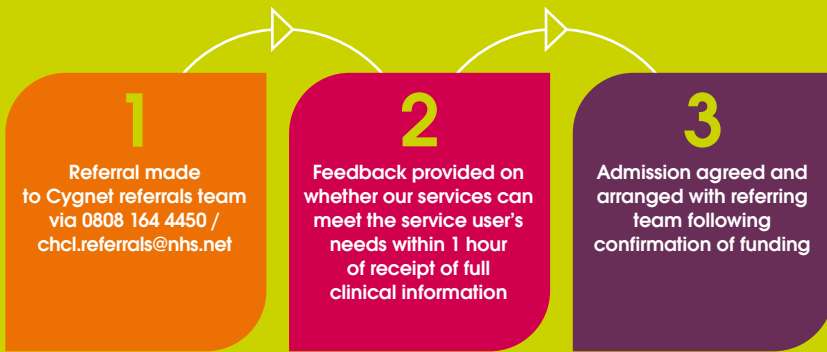
”

How to make a referral

For Mermaid Ward and Faun Ward our CAMHS PICU and Pixie Ward our CAMHS Acute service:



We are able to take referrals 24 hours a day, 7 days a week. To make a referral please call **0808 164 4450** / email **chcl.referrals@nhs.net** or contact your regional Business Relationship Manager



For Dragon Ward our CAMHS Low Secure Service:



Where are we?

Cygnet Joyce Parker Hospital,
2 Lansdowne Street, Coventry, West Midlands CV2 4BF
(for Sat Nav use CV2 4FN)



@cygnethealth /cygnethealthcare /company/cygnet-health-care

www.cygnethealth.co.uk

