

Improving lives together

Highly Specialised Autism Spectrum Disorder Service for Men

Cygnnet West Hills, Birmingham

Good



Accepting
referrals
bespoke
flats available

Cygnnet West Hills provides dedicated, person-centred support to men with learning disabilities, autism and associated complex needs in a robust environment.

The service has a number of independent and communal living spaces for the individuals we support, to maximise opportunities to progress through their care pathway towards greater independence.

In line with 'building the right support', we support individuals who have different levels of need in their own space which is tailored to their own sensory needs.

- > **8 en-suite bedrooms and 3 bespoke single occupancy flats in the main house**
- > **3 bespoke single occupancy flats in the courtyard that is attached to the main house**
- > **4 bespoke single occupancy flats in the Annexe**
- > **3 bespoke single occupancy flats in the Gate Lodge**



Male



18+ years



21 beds (8 en-suite bedrooms + 13 single occupancy flats)

Our service user profile:

- > Diagnosis or strong clinical opinion of learning disability and autism spectrum disorder
- > Individuals will have additional complex needs including co-morbid mental illness, behaviours that challenge, epilepsy, ADHD, personality disorder, significant impairment in social and adaptive functioning
- > Individuals may be informal or may be detained under the Mental Health Act / Deprivation of Liberty Safeguards (DoLS)
- > May require bariatric care



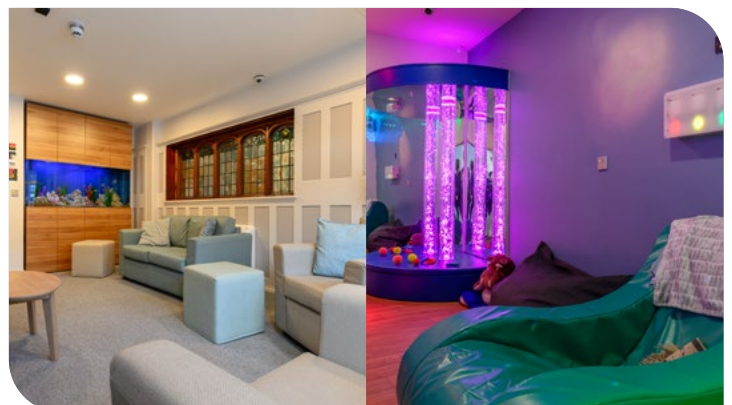
Our service at a glance

Located in Kings Norton, Birmingham, Cygnnet West Hills can support individuals who may be detained under the Mental Health Act, as well as those who have complex behaviours, or who have significant difficulties with social engagement. We accept emergency referrals and the team is experienced in managing them quickly and efficiently to ensure the transition for the individual is as smooth as possible.

Each individual has their own en-suite bedroom or single occupancy flat that they are encouraged and supported to personalise. The service has an array of facilities, all of which provide a low stimulus environment for individuals who may be experiencing heightened feelings of agitation. There are many good sized living areas for service users to choose from, sensory rooms, activity rooms and 3 activity of daily living (ADL) kitchens where individuals are supported to make their own drinks and prepare food.

With six acres of gardens, Cygnnet West Hills has an abundance of external space to take part in outdoor activities or to sit and relax and take in the beautiful surroundings, some of the flats also have their own private garden.

The highly experienced team work together with service users to provide a holistic and comprehensive assessment, care and treatment plan. They ensure individual needs are met in a way that helps achieve stability and discharge to a less restrictive setting. All members of staff are trained in understanding autism and learning disabilities and in how to create a supportive environment for everyone.





Our community links:

- > Cinema
- > Swimming pools, gyms & hydropool
- > Shopping
- > Bowling alley
- > Ice skating
- > Cadbury World
- > Local farms
- > Ackers Adventure
- > Sea Life Centre
- > Go-Karting
- > Botanical Gardens
- > Mini Golf
- > West Midlands Safari Park
- > Museums
- > Horse riding
- > Llama walking
- > Palace Theatre
- > SnowDome Inflatable Centre
- > Fishing
- > Theme parks
- > Lickey Hills Country Park
- > Adult soft play & trampoline parks
- > Mencap Community Hub
- > Akamba African Heritage Garden Centre
- > Birmingham Wildlife Conservation Park

Our facilities:

- > 13 bespoke single occupancy flats
- > 8 en-suite bedrooms
- > Lounges
- > Dining room
- > Laundry room
- > Sensory rooms
- > Allotment
- > Sensory garden
- > Wildlife garden
- > Family room
- > Multi-faith room



Make a referral

- 1 Referral made to your **regional Business Relationship Manager** or 0808 164 4450 / chcl.referrals@nhs.net
- 2 Assessment arranged and undertaken via our assessment team
- 3 Feedback provided on whether our service can meet the individual's needs
- 4 Assessment pack formulated including care plans and funding information
- 5 Admission agreed and plans for transition arranged with referring team following confirmation of acceptance of placement

Where are we?

Cygnets West Hills
West Hills Lane, Kings Norton
Birmingham, West Midlands B38 9ET

Phone number
0121 458 2263



CYG-1074 | Date of Preparation: 13/08/25

Please visit [cygnetsgroup.com](https://www.cygnetsgroup.com) for more info | Follow us on social media:



Integrity

Trust

Empower

Respect

Care