

Improving lives together

Specialist Residential Service with Nursing for Adults with Learning Disabilities

Oaklands, Hexham

Placements
now available

Oaklands is a specialist residential service with nursing, supporting individuals with learning disabilities and complex needs in Hexham, Northumberland. The team support individuals who have additional mental or physical health needs and behaviours that may challenge.

Oaklands is split into two sections, the main house and single occupancy flats.

Seven single occupancy flats - These self-contained living areas provide the opportunity for seven individuals with more challenging needs to live in their own space with staff support. Each flat has a lounge, kitchen / diner, en-suite bedroom as well as a staff observation area. In addition one of the flats is located away from the main house and has its own front door and garden.

Eight en-suite bedrooms with multiple lounge and dining facilities. Other facilities within the service that are accessible for all individuals include a sensory room, large garden, café area and a conservatory.



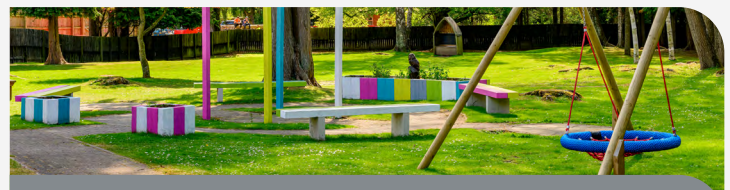
Mixed
gender



18+ years



15 placements



The people we support:

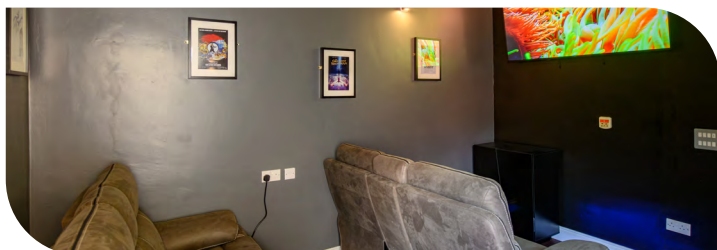
- > Adults from the age of 18+ years
- > Individuals with a primary diagnosis of learning disability
- > May present with behaviours that challenge
- > May have autism
- > May have mental or physical health needs
- > May present with communication challenges

Our service at a glance

Oaklands is a large detached property with extensive living areas. Close to the historic market town, individuals can access a good choice of recreational and leisure facilities. These include a swimming pool, a library, parks and shops, as well as the beautiful surrounding countryside.

Oaklands has a dedicated activity coordinator who supports individuals to have personalised activity plans, created based on each person's likes and hobbies. Individuals are supported to plan menus, shop, and prepare food with support to increase their daily living skills.

Our goal is to enable the people we support to structure their time, build relationships and establish a balance between therapy, self-care, leisure, as appropriate to their needs.



Our facilities:

- > En-suite bedrooms
- > Multiple lounges
- > 2 dining rooms
- > Large landscaped garden, large conservatory with seating and allotment
- > Relaxation room
- > Café area
- > Seven individual flats with their own lounge, kitchen diner and en-suite bedroom

Our community links:

- > Shops and restaurants
- > Swimming pools and leisure centres
- > Hadrian's Wall
- > Queen's Hall Arts Centre
- > Beautiful countryside including Hadrian's Wall and local farms during lambing season
- > Vocational opportunities
- > Community centres specialising for individuals with learning disabilities
- > Excellent public transport links
- > Cinema



Support individuals to have **annual holidays**

Easy read and other **accessible information** available

On-site relaxation room

Individuals supported to access **local volunteering opportunities**

Large garden including picnic area, local wildlife including pheasants, a greenhouse and vegetable patch

Regular therapy dog activities and **Makaton sessions**

Regularly setting personalised goals to encourage development and independence

On-site Multi-Disciplinary Team (MDT) consisting of nurses, occupational therapy, speech and language therapy, psychology and psychiatry

Monthly multi-cultural events

Consistently **100%** of individuals achieve over **25 hours** of activities each week

Extensive links with local community day services

Homely environment with **24/7 support**



For more information or to make a referral, please contact your regional Business Relationship Manager or email: sc.referrals@cygnethealth.co.uk

- 1 Referral made to Cygnet Social Care and a desktop assessment is undertaken to review suitability for placement
- 2 If a suitable placement is identified, an assessment is arranged and undertaken by our specialist team
- 3 Feedback is provided on whether our service can meet the individual's needs
- 4 Detailed placement proposal is formulated to include care plans and funding information
- 5 Once placement is confirmed, transition plans are developed with all relevant stakeholders and admission date is agreed

Where are we?

Oaklands
Anick Road, Hexham,
Northumberland NE46 4JR
Phone number
01434 600 684



CYG-611 | Date of Preparation: 07/08/25

Please visit cygnetgroup.com for more info | Follow us on social media:



Integrity

Trust

Empower

Respect

Care