

Improving lives together



Specialist Residential Service for Adults with Learning Disabilities and Complex Needs

Good

Placements
now available

Located in a historical area in Leeds, Kirkside Lodge is a specialist residential service providing outcome focused care for adults with learning disabilities and associated complex needs who may have behaviours that challenge.

Person-centred planning is at the heart of everything we do and we are able to meet the changing needs of individuals we support as they progress through their care pathway, while ensuring their safety is maintained and their independence supported.



Mixed
gender



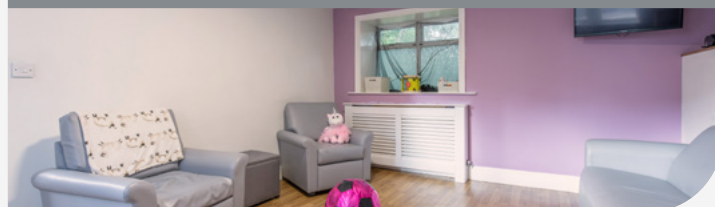
18+ years



8 Placements

The people we support:

- > Adults from the age of 18 years
- > Individuals with a primary diagnosis of learning disability accompanied with behaviours that challenge including mental illness or a forensic background
- > Individuals with a secondary diagnosis of personality disorder or autism
- > May have communication challenges
- > May have associated complex needs



Our service at a glance

Kirkside Lodge features four distinct living areas: one with three bedrooms, two with two bedrooms, and a single-bedroom space. Each of these accommodations boasts its own living space, complete with a lounge, dining room, kitchen, and en-suite facilities, enabling individuals to live as independently as possible.

Externally there is a large garden which is shared with Kirkside House (also a residential service located in the same grounds). There is plenty of space in the garden for individuals to participate in the horticultural project where they grow their own vegetables, create hanging baskets, enjoy the sensory garden or even just sit and enjoy the outside space.

At Kirkside House, we are also proud to host our bakery project. This initiative, alongside a textile project and other vocational programs, is run collaboratively with our other local Cygnet residential services.

These projects introduce practical learning activities specifically designed to empower residents, offering them the chance to develop valuable skills and build confidence within a safe and familiar setting.

We ensure we involve family or advocates in an individual's care. We have high staffing levels at Kirkside Lodge, this ensures that we are able to meet the changing needs of each individual as they progress through their care pathway.

The service is located in a historical residential area of Leeds, in walking distance to an abundance of community facilities including shopping centres, cafes and leisure centres. It is also only a short walk from the 800 year old Kirkstall Abbey, where the people we support can visit to enjoy the surroundings, learn about the historical ruins or visit the on-site café. All individuals are encouraged to be involved in the local community as much or as little as they wish to be.



Rated **'Good'**
by the CQC

Bakery project - At our on-site bakery project, individuals are taught how to make cakes and other sweet treats, whilst also learning about the safety aspect of a kitchen



Gardening project

– hosted in the large garden where individuals learn how to grow produce and taking care of chickens



Supporting individuals to enhance their social skills



Monthly themed activity days



Textiles project - giving individuals the opportunity to learn to sew and create new things each week



Community meetings
Individuals we support give their thoughts and feedback on the service at community meetings



Good relationship with local CLDT



Focussed on reducing restrictive practice



Our community links:

- > Cinemas
- > Local parks
- > Community groups
- > Colleges
- > Shops, cafés and restaurants
- > Sports clubs
- > Great public transport links
- > 20 minutes to Leeds City Centre
- > Excellent transport links and local amenities

Our facilities:

- > En-suite bedrooms
- > Lounges
- > Dining room
- > Multiple kitchens
- > 2 activity rooms
- > Large garden



We can relax knowing she is happy and so well cared for.
We just wanted to say thank you.

- Family member



For more information or to make a referral, please contact your regional Business Relationship Manager or email:
sc.referrals@cygnethealth.co.uk

- 1 Referral made to Cygnet Social Care and a desktop assessment is undertaken to review suitability for placement
- 2 If a suitable placement is identified, an assessment is arranged and undertaken by our specialist team
- 3 Feedback is provided on whether our service can meet the individual's needs
- 4 Detailed placement proposal is formulated to include care plans and funding information
- 5 Once placement is confirmed, transition plans are developed with all relevant stakeholders and admission date is agreed

Where are we?

Kirkside Lodge
1 Spen Lane, Kirkstall,
Leeds, West Yorkshire LS5 3EJ

Phone number
0113 2786834



CYG-886 | Date of Preparation: 04/09/25

Please visit cygnetgroup.com for more info | Follow us on social media:



Integrity

Trust

Empower

Respect

Care