

Improving lives together



# High Support Inpatient Rehabilitation (Level 2) Service for Men

Cygnet Sherwood House,  
Nottinghamshire

Outstanding

Now taking  
referrals



Cygnet Sherwood House is a 30 bed specialist high support inpatient rehabilitation (level 2) service for men dedicated to providing a high quality environment for promoting long-term recovery. Our facilities and multi-disciplinary treatment programme are designed to assist individuals with their return to community living. Those placed with us often come from multiple placement breakdowns, failed treatment programmes or are stepping down from secure settings.

By combining a collaborative, multi-disciplinary approach, we deliver high-quality care using our unique 4 stage model of care for our mental health high support inpatient rehabilitation (level 2) services.



Male



18+ years



30 beds

## Our service user profile:

- > Detained under the Mental Health Act (1983) or informal
- > Primary diagnosis of mental illness with:
  - Complex comorbidities
  - Substance, drug and alcohol abuse
  - Treatment resistance
  - Behaviours that may challenge
- > Aiming for a return to community or community-based care
- > History of sexual abuse or domestic violence
- > Typical diagnoses: schizophrenia, schizoaffective disorder, bipolar affective disorder or depression
- > May have secondary diagnoses of mild learning disability, autism spectrum disorder or personality disorder
- > May have a forensic history and/or be stepping down from secure services
- > May have a history of repeated acute admissions

## Our service at a glance

Cygnet Sherwood House is located in Rainworth, Mansfield, Nottinghamshire with good local transport links to Mansfield, Nottingham, Derby and Sheffield. We have plenty of community facilities nearby and also lots of places of interest including Sherwood Forest, home of Robin Hood.

Within the service we have 30 en-suite bedrooms, 7 of which are located on the ground floor. These rooms can be used for those individuals with mobility issues and would find stairs difficult, but they can also be used for individuals who need a higher level of observation by the staff. Additionally we have a gym, two gardens including an allotment, a multi-faith room and two therapy kitchens. Meals at Cygnet Sherwood House are served in the dining room and they run on a café system. There is a large variety of choice that caters for individual preferences and dietary requirements.

Our dedicated clinical team provide a multi-disciplinary input including occupational therapy, psychology, psychiatry and vocational training. However, we offer more than just specialists and treatments, we value the service users as individuals, help enhance their interests and abilities, encourage them to share their views and help them unlock their talents and aspirations.



Scan the QR code or click here  
to watch a short video on  
Cygnet Sherwood House

Rated  
**'Outstanding'**  
with the CQC

**People's council  
meetings** held monthly



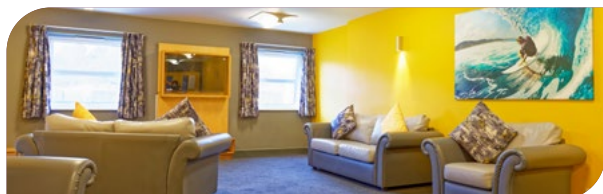
**Therapeutic earnings  
programme** enabling  
individuals to gain employment skills  
and earn money at the same time



**Social Hub**  
co-produced  
with service users



"Well done for what you are doing, I have never seen  
him so well." - **External health professional**



**Truly holistic  
approach**  
to assessing, planning  
and delivering care  
and treatment



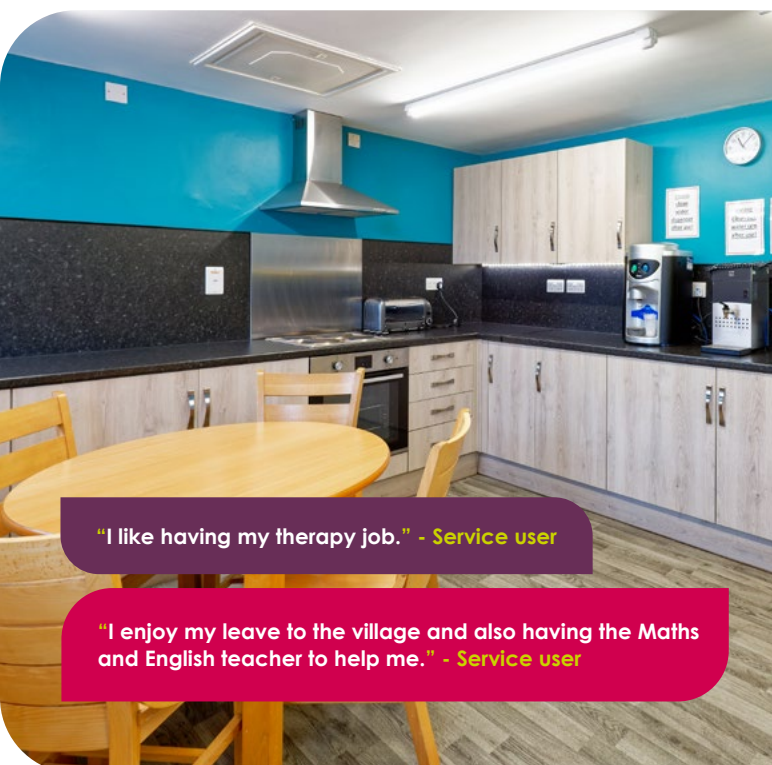
**English, Maths and  
Music tutors** visit the  
service each week



**78%**

of those discharged  
in the last 18 months  
have been able to  
step down along  
their care pathway\*

\*Data obtained Dec 24



"I like having my therapy job." - **Service user**

"I enjoy my leave to the village and also having the Maths  
and English teacher to help me." - **Service user**

### Our multi-disciplinary team:

- > Responsible clinician
- > Specialty doctor
- > Hospital manager
- > Head of care
- > Occupational therapists
- > Psychologist
- > Assistant psychologist
- > Nurses
- > Support workers
- > Mental health  
act administrator
- > Advocacy

### Our facilities:

- > En-suite bedrooms
- > Two therapy kitchens
- > Variety of activity areas
- > Three lounges
- > Dining room
- > Private visitors area
- > Enclosed garden  
with allotment
- > Gym
- > IT café
- > Social hub
- > Multi-faith room



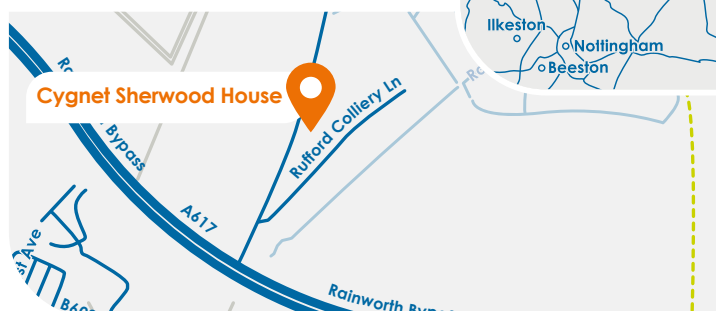
## Make a referral

- 1 Referral made to your **regional business relationship  
manager** or 0808 164 4450 / [chcl.referrals@nhs.net](mailto:chcl.referrals@nhs.net)
- 2 Assessment arranged and undertaken via our  
assessment team
- 3 Feedback provided on whether our service can meet  
the individual's needs
- 4 Assessment pack formulated including care plans and  
funding information
- 5 Admission agreed and plans for transition arranged  
with referring team following confirmation of  
acceptance of placement

## Where are we?

**Cygnets Sherwood House**  
Rufford Colliery Lane, Mansfield  
Nottinghamshire, East Midlands  
NG21 0HR

**Phone number**  
01623 499010



CYG-994 | Date of Preparation: 04/06/25

Please visit [cygnetsgroup.com](http://cygnetsgroup.com) for more info | Follow us on social media:

Integrity

Trust

Empower

Respect

Care