

Improving lives together

Community Rehabilitation (Level 1) Service for People With Mental Health Needs

1 Vincent Court, Blackburn



Vincent Court is a five-bed community rehabilitation (Level 1) service for people who have been able to progress through the hospital pathway at Cygnet Fountains. We also accept referrals from other high support inpatient rehabilitation (Level 2) services as well as directly from the community.

We offer a safe, comfortable and homely setting that enables individuals to focus on their continued recovery and transition back into a successful and more independent lifestyle – with the advantage of continuing to access the same multi-disciplinary team (MDT) at Cygnet Fountains.



Mixed gender



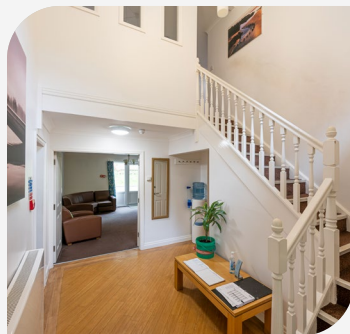
18+ years



5 beds

Our resident profile:

- > May be on a Community Treatment Order (CTO), conditional discharge, or informal
- > Primary diagnosis of mental illness with:
 - Complex comorbidities
 - Substance, drug and alcohol abuse
 - Treatment resistance
 - Behaviours that challenge
- > History of vulnerability
- > Typical diagnoses: schizophrenia, schizoaffective disorder, bipolar affective disorder or depression
- > May have a diagnosis of personality disorder
- > May have secondary diagnoses of mild learning disability or autism spectrum disorder



Our service at a glance

Vincent Court is a large detached five bedroom house. All bedrooms have en-suite facilities. The kitchen is large and it is the hub of the house with lots of group cooking sessions going on. Outside, we have lovely gardens to sit and relax in during the summer months. The house is staffed 24-hours a day and all staff have experience in the field of mental health rehabilitation services prior to working at Vincent Court.

The service we offer focuses on continuing to practise life skills and coping strategies. We concentrate on community-based activities, the use of public transport, education and vocational therapy, job placements, work experience and development of hobbies and interests.

Due to our location, we have extensive travel links that are easily accessed, giving ample opportunity to practice necessary skills and get out and about to prepare for life in the future. The local area offers an abundance of community facilities including parks, shops cafes, restaurants and leisure activities



Our community links:

- > Leisure centre
- > Job centre
- > Great public transport links
- > Libraries
- > Supermarkets
- > Cafés
- > Restaurants

Person centred therapeutic timetable

Homely environment with 24-hour support

Supporting people in our care to access **education and vocational studies**

Peer support groups

Access to **Cygnets Fountain's MDT** providing a wide range of person-centred therapies

We empower the men we support to enable them to learn and practice skills and manage their illness in the community

We encourage family contact (where appropriate)

Staff support individuals in the least restrictive way possible and in their best interests

Individuals are supported to have maximum choice and control of their lives



"I love living here and receive the support I need" - Resident

i For more information or to make a referral please call **0808 164 4450** or email chcl.referrals@nhs.net

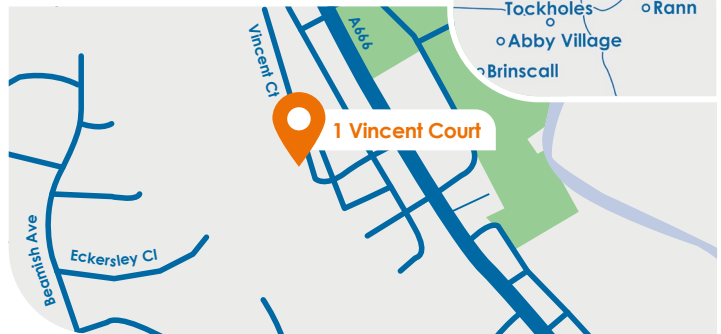
Our referral process:

- 1 Referral made to Cygnets referrals team via [0808 164 4450](tel:08081644450)/chcl.referrals@nhs.net
- 2 Assessment arranged and undertaken via our management team
- 3 Feedback provided on whether our service can meet the individual's needs
- 4 Assessment pack formulated including care plans and funding information
- 5 Admission agreed and plans for transition arranged with referring team following confirmation of acceptance of placement

Where are we?

1 Vincent Court
Blackburn, Lancashire,
North West BB2 4LD

Phone number
01254 699 678



CYG-1185 | Date of Preparation: 07/02/24

Please visit cygnetsgroup.com for more info | Follow us on social media: