

Improving lives together

CAMHS Acute & Eating Disorder Service

Wizard House,
Cygnet Bury Forestwood, North West

Good



Accepting
Referrals



NEW

January 2026 - Supporting young people with Eating Disorders

Wizard House is our 12 bed acute service providing support for young people aged 12 to 18 across the gender spectrum who require inpatient care. We focus on helping them return home and are dedicated to helping young people maintain their school placements where possible. Admissions can be either formal or informal.

The aim of our service is to improve the mental health of young people, who require treatment in a general adolescent unit, by delivering tailored assessment and treatment packages in a safe, age appropriate environment, specifically, to reduce the risk of harm to self and / or others.

The service helps young people whose needs cannot be safely and adequately met by community Tier 3 CAMHS or specialist education facilities. This includes individuals with a mild learning disability or autism, who do not require Tier 4 CAMHS Learning Disability Services. We can also support young people with disordered eating.



Mixed
gender



12 to 18
years



12 beds

Our service user profile:

- > Age 12-18 years
- > Diagnosis of:
 - Psychosis
 - Self-harm and/or suicidal ideation
 - Depression or anxiety
 - Emerging personality disorder
 - Emotional, social and behavioural difficulties
- > May be detained under the Mental Health Act or informal
- > May have forensic history
- > May also have the following co-morbidities as a secondary diagnosis:
 - Borderline / mild learning disability
 - Autism
 - Eating Disorders
 - Disordered eating

Eating Disorder / Disordered Eating Support

Building on our existing experience supporting young people with Disordered Eating, the team at Wizard House has now undergone specialist training in Eating Disorders. This comprehensive program ensures our staff are fully equipped to provide expert support for young people suffering from an Eating Disorder or Disordered Eating.

Our in-house Multidisciplinary Team (MDT) includes dietitians and CBT-E trained therapists. Care plans are formulated in collaboration with the people we support, including specialist Naso-gastric (NG) feeding plans where deemed appropriate.

The ward includes a private dining room, giving individuals a dedicated quiet and supportive environment for mealtimes.

Forestwood School

Forestwood School is the specialist provider of education for all young people admitted to Cygnet Bury Forestwood. Teaching happens within a school unit, equipped with an ICT suite and an interactive whiteboard. The school also has access to a kitchen, gymnasium, outside courtyard and therapeutic garden.

Curriculum

The intent of our school curriculum is to maintain and develop current educational pathways and / or promote future re-engagement with education, employment or training. In doing so, we believe that young people leaving our provision will stand the best chance of reintegration with community life and therefore a successful recovery journey.





Thank you for all your help and support you gave to our daughter, we truly appreciate it. - **Parents**

Our facilities:

- > En-suite bedrooms
- > Spacious communal areas
- > Outdoor sports areas
- > IT Café
- > Training kitchen to support skills development
- > On-site Ofsted registered school

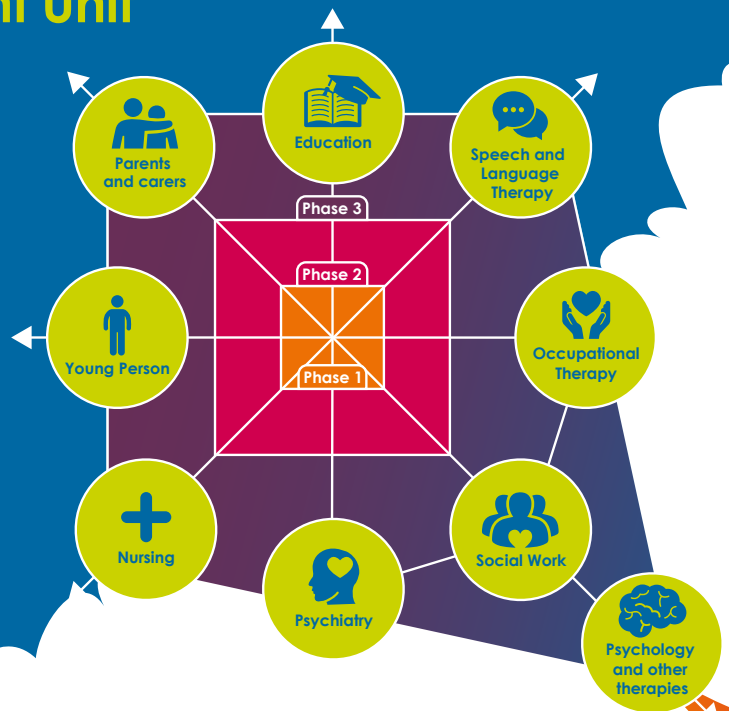
Thank you for helping me get to the stage I am now, for the groups and activities, for the leaves and the confidence boost. You've really had a big impact on my recovery. - **Young person**



CAMHS General Adolescent Unit (GAU) Model of Care

KITE - Key Interventions of Therapeutic Enabling

- Phase 1**
Assessment and Engagement (First 72 hours)
- Phase 2**
Formulation and Treatment (Weeks 1 - 8)
- Phase 3**
Transition and Discharge (Weeks 9 - 12)



1

Referral made to Cygnets bed hub via
0808 164 4450 /
chcl.referrals@nhs.net

2

Feedback provided on whether our services can meet the service user's needs within 1 hour of receipt of full clinical information

3

Admission agreed and arranged with referring team following confirmation of funding

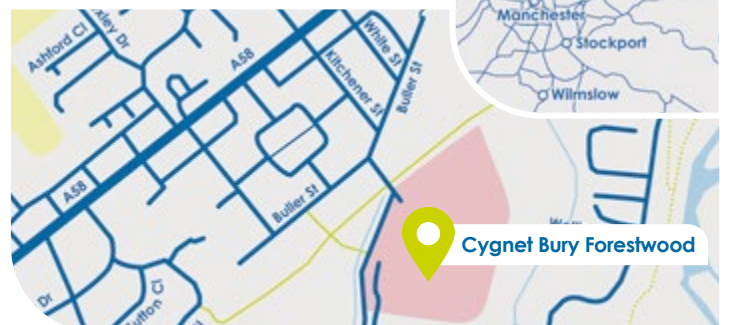
For All PICU and Acute Referrals (Adults and CAMHS)

0808 164 4450
chcl.referrals@nhs.net

Where are we?

Cygnets Bury Forestwood
off Buller St, Bolton Rd, Bury,
North West BL8 2BS

Phone number
0161 762 7200



CYG-1019 | Date of Preparation: 02/12/2025

Please visit cygnetsgroup.com for more info | Follow us on social media: [f](#) [i](#) [in](#)

Integrity

Trust

Empower

Respect

Care